



DualShock 4 CHU-ZCT2U Joystick Cover Replacement

Follow this guide to replace the joystick...

Written By: Sam Omiotek



INTRODUCTION

Follow this guide to replace the joystick covers on a Sony Dualshock 4 CHU-ZCT2U PlayStation controller.



TOOLS:

- [iFixit Opening Tool](#) (1)
- [Phillips #00 Screwdriver](#) (1)
- [Tweezers](#) (1)



PARTS:

- [DualShock 4 Controller Joystick Cover](#) (2)

Step 1 — Remove the rear panel screws



- Use a Phillips screwdriver to remove the four 6.4 mm-long screws from the rear panel.

Step 2 — Separate the rear panel



- ❗ Four fragile plastic clips hold the panels together. You can see their locations more clearly in [this guide](#).
- ❗ The clips help hold the seams together. If you break these clips, the controller will still work.
- Insert an opening tool into the crease where the front and rear panel meet, starting from the outside edge of either handle.
- Gently pry the rear panel off of the front panel until they become partially separated.

Step 3 — Release the plastic clips



- Use the opening tool to separate the panels by releasing the plastic clips around the perimeter of the controller.

Step 4 — Remove the rear panel



- Lift the rear panel directly away from the controller.

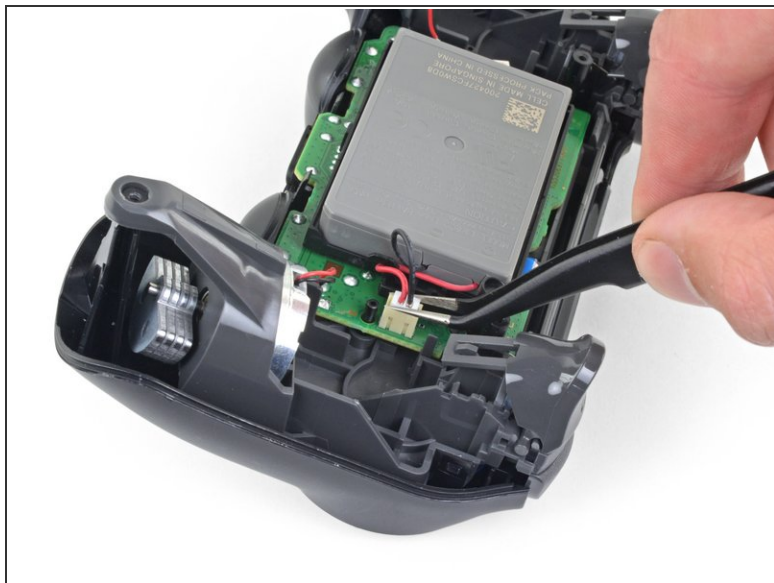
⚠ Do not completely remove the rear panel. It is still attached to the controller by a ribbon cable.

Step 5



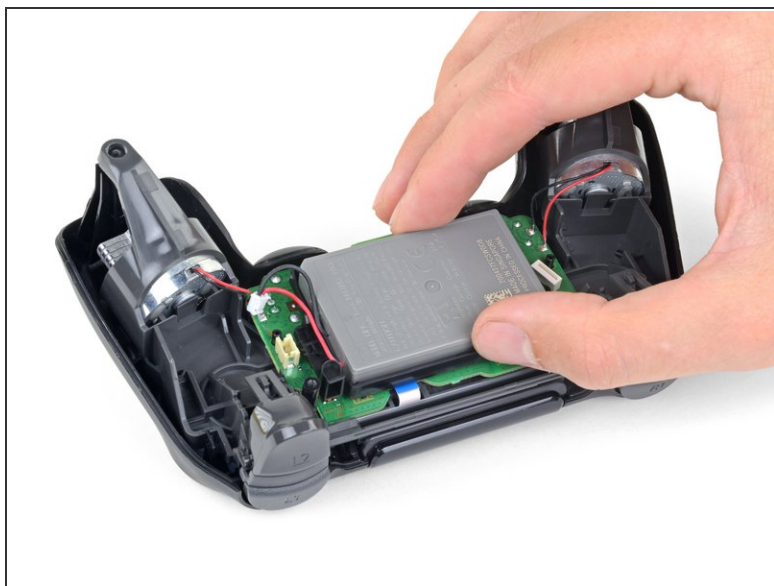
- Use your fingers to gently pull the ribbon cable straight out of its connector on the motherboard.
- ⓘ Since this cable's pull tab is too small to grab with fingers or tweezers, grab the cable itself. Otherwise utilize pull tabs whenever possible.
- ✦ During reassembly, grab the ribbon cable by the blue tab and gently press the cable straight into the connector. Push the blue tab rather than the ribbon cable itself.

Step 6 — Remove the battery



- Use a pair of tweezers to pull the battery's power connector straight up from the motherboard.

Step 7



- Remove the battery.

Step 8 — Remove the motherboard



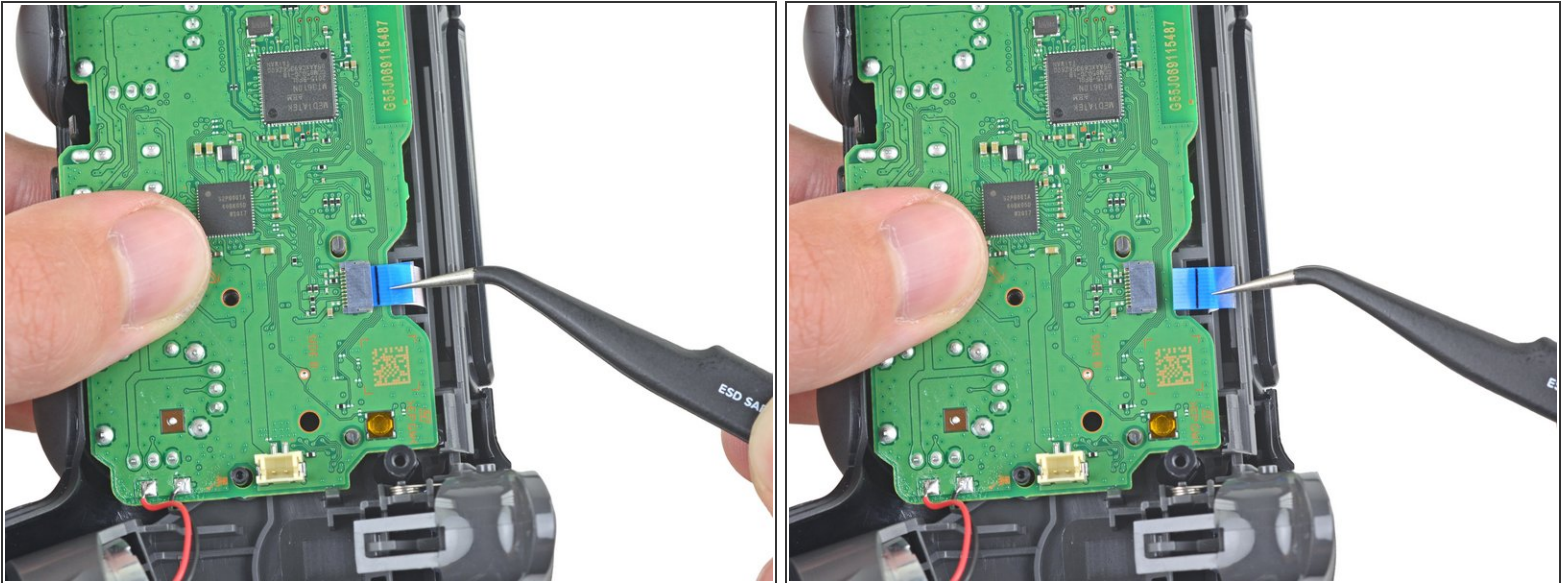
- Use a Phillips screwdriver to remove the 6.4 mm-long screw securing the battery bracket.

Step 9



- Remove the battery bracket.

Step 10



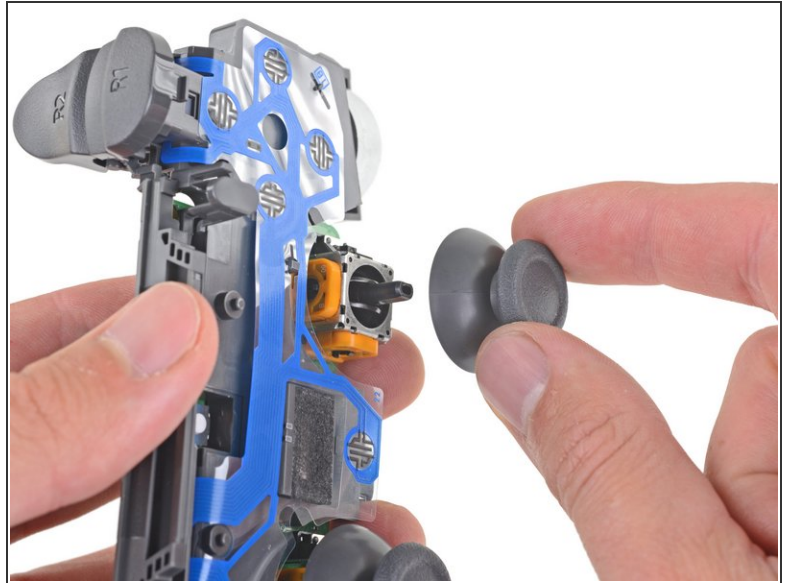
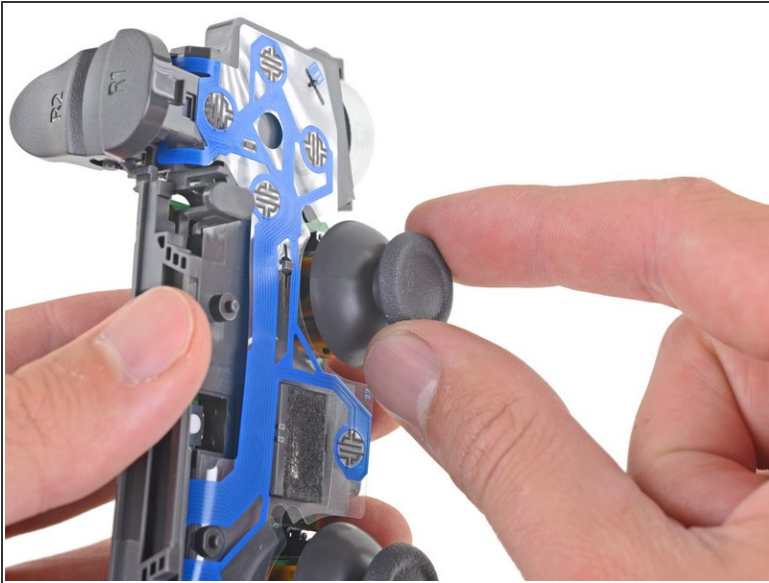
- Use a pair of tweezers to disconnect the touch panel ribbon cable.
- ❗ Pull the ribbon cable directly away from its connector on the motherboard by the blue pull tab, not by the cable itself.

Step 11



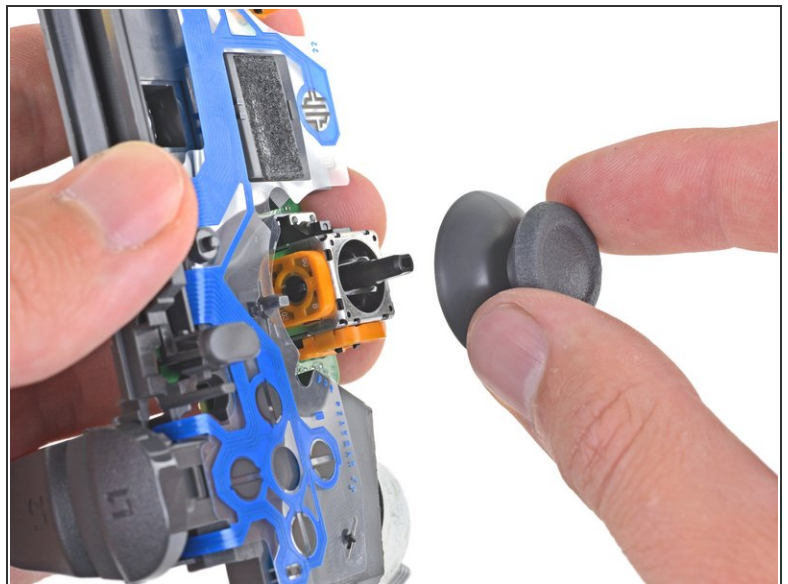
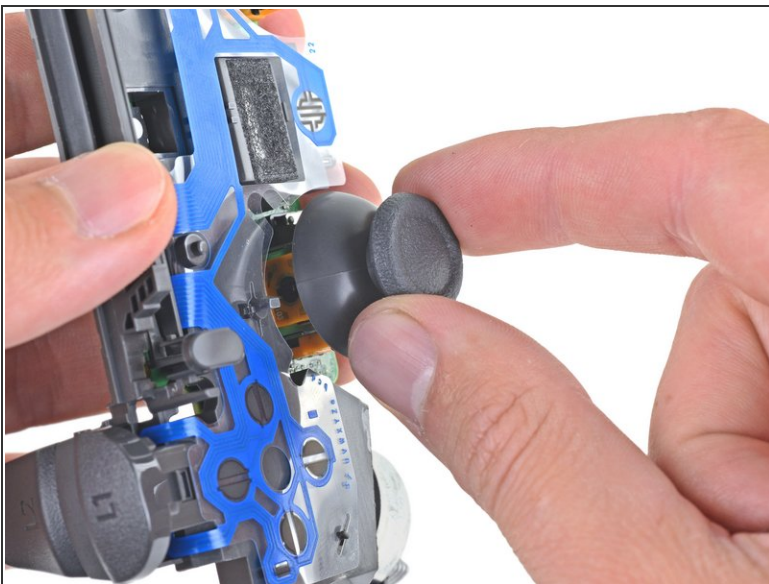
- Separate the motherboard and midframe assembly from the front panel.

Step 12 — Remove the joystick covers



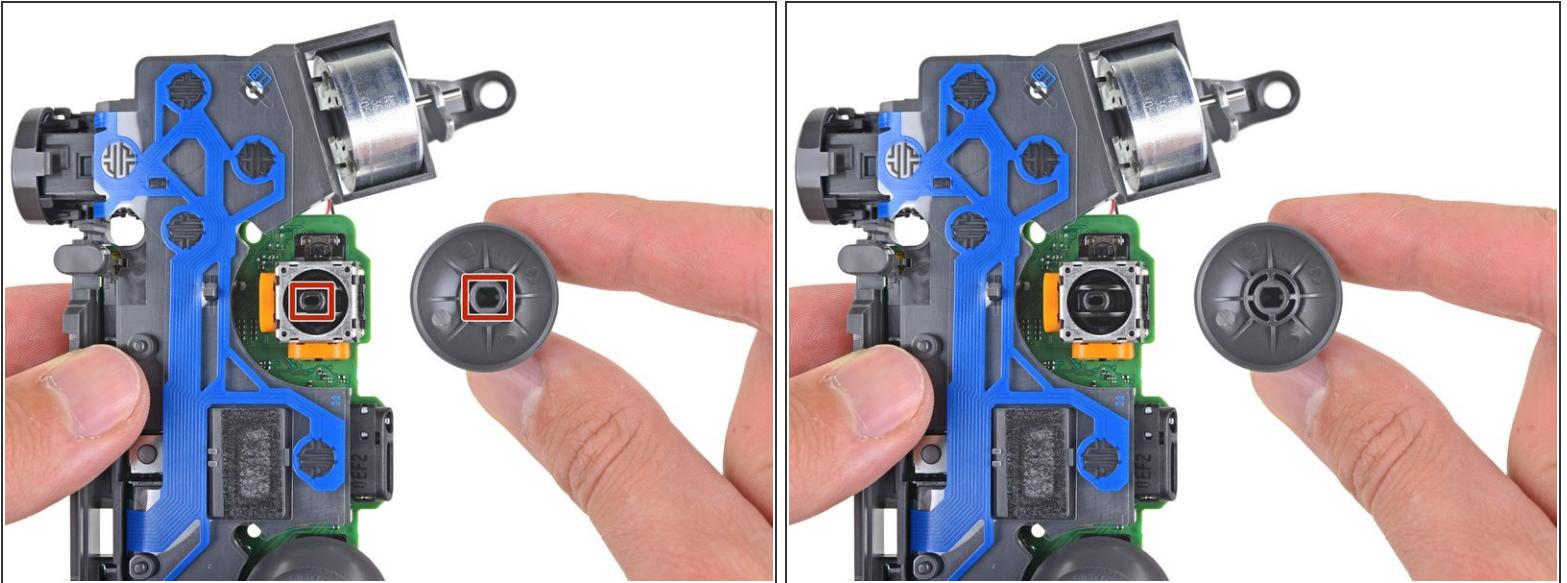
- Pull the right joystick cover straight off the joystick module to remove it.

Step 13



- Pull the left joystick cover straight off the joystick module to remove it.

Step 14 — Reassembly tip



- ✦ During reassembly, ensure the new joystick covers properly align with the shafts on the joystick modules before pressing them into place.

To reassemble your device, follow the above steps in reverse order.

Repair didn't go as planned? Check out our [Answers community](#) for troubleshooting help.