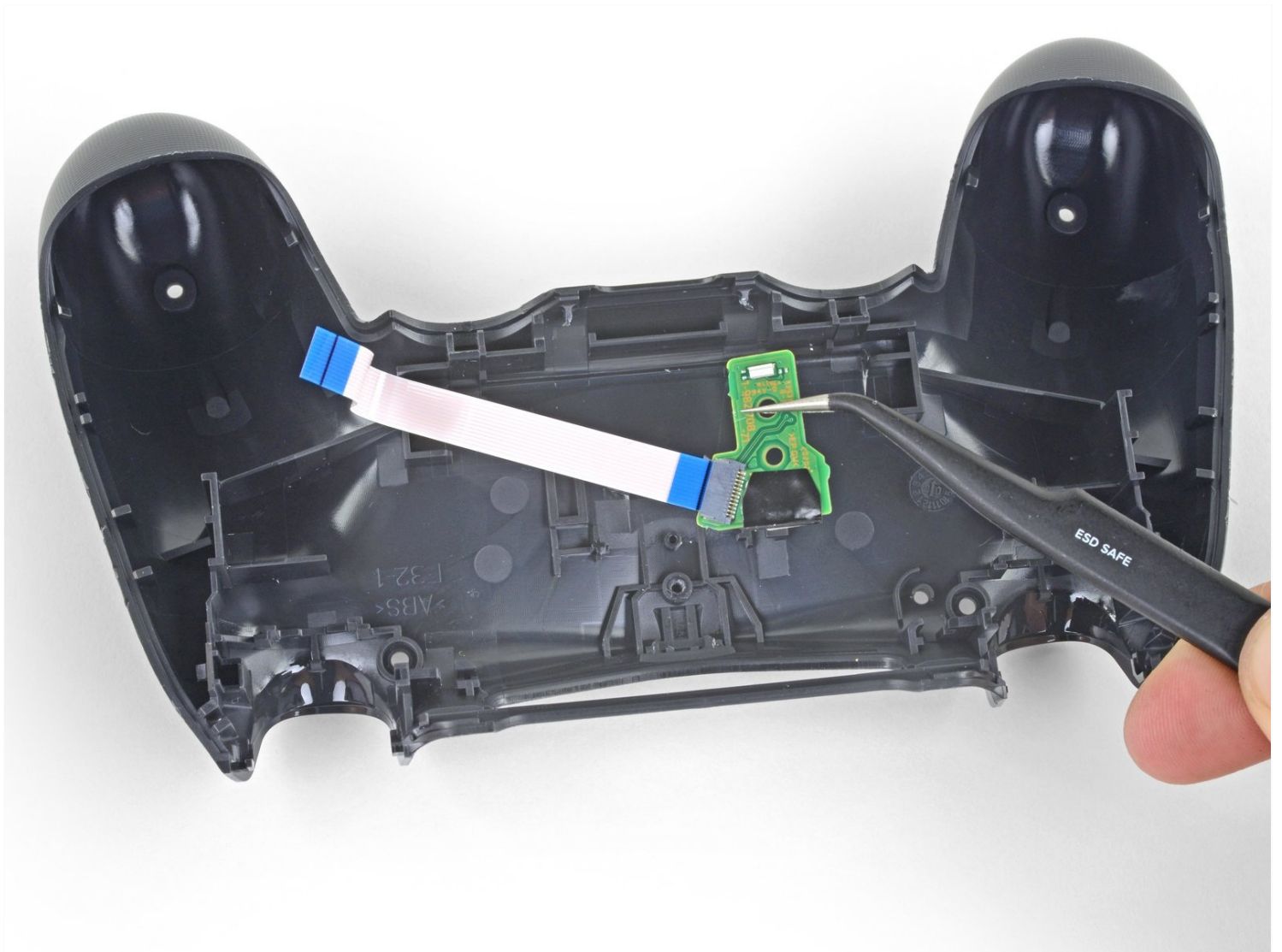




# DualShock 4 CHU-ZCT2U Charging Assembly Replacement

Follow this guide to replace the charging...

Written By: Sam Omiotek



# INTRODUCTION

Follow this guide to replace the charging assembly on a Sony Dualshock 4 CHU-ZCT2U PlayStation controller.

## TOOLS:

[iFixit Opening Tool](#) (1)  
[Phillips #00 Screwdriver](#) (1)  
[Tweezers](#) (1)

## PARTS:

[DualShock 4 Controller Charging Assembly \(JDS-030\)](#) (1)

## Step 1 — Remove the rear panel screws



- Use a Phillips screwdriver to remove the four 6.4 mm-long screws from the rear panel.

## Step 2 — Separate the rear panel



- ❶ Four fragile plastic clips hold the panels together. You can see their locations more clearly in [this guide](#).
- ❶ The clips help hold the seams together. If you break these clips, the controller will still work.
- Insert an opening tool into the crease where the front and rear panel meet, starting from the outside edge of either handle.
- Gently pry the rear panel off of the front panel until they become partially separated.

## Step 3 — Release the plastic clips



- Use the opening tool to separate the panels by releasing the plastic clips around the perimeter of the controller.

## Step 4 — Remove the rear panel



- Lift the rear panel directly away from the controller.

⚠ Do not completely remove the rear panel. It is still attached to the controller by a ribbon cable.



## Step 5



- Use your fingers to gently pull the ribbon cable straight out of its connector on the motherboard.
  - ① Since this cable's pull tab is too small to grab with fingers or [tweezers](#), grab the cable itself. Otherwise utilize pull tabs whenever possible.
- ☑ During reassembly, grab the ribbon cable by the blue tab and gently press the cable straight into the connector. Push the blue tab rather than the ribbon cable itself.

## Step 6 — Remove the light guide



- Use an opening tool or spudger to separate the white plastic bar from the rear panel.

## Step 7



- Remove the white plastic bar.

## Step 8



- Lift the light guide away from the rear panel to remove it.
  - ☒ During reassembly, align the light guide with the rear panel using [the notch](#) near the bottom left.

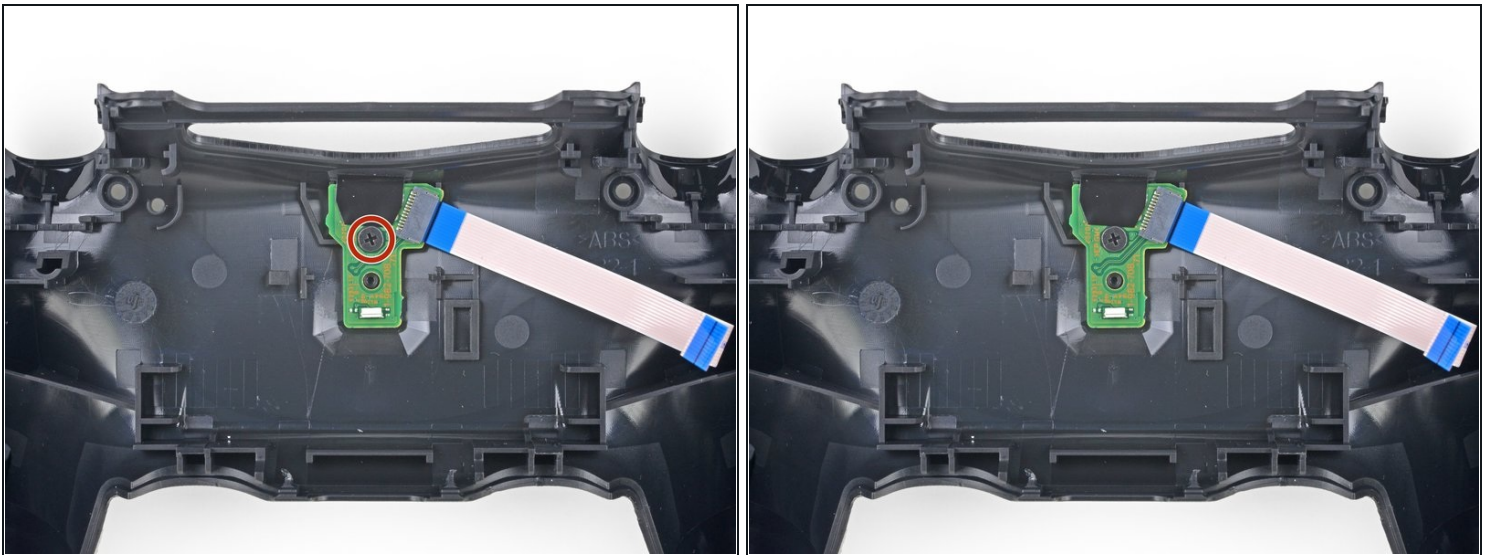


## Step 9



- Use your fingers to press the translucent plastic piece down through the top of the controller.
- Remove the translucent plastic piece.

## Step 10 — Remove the charging assembly



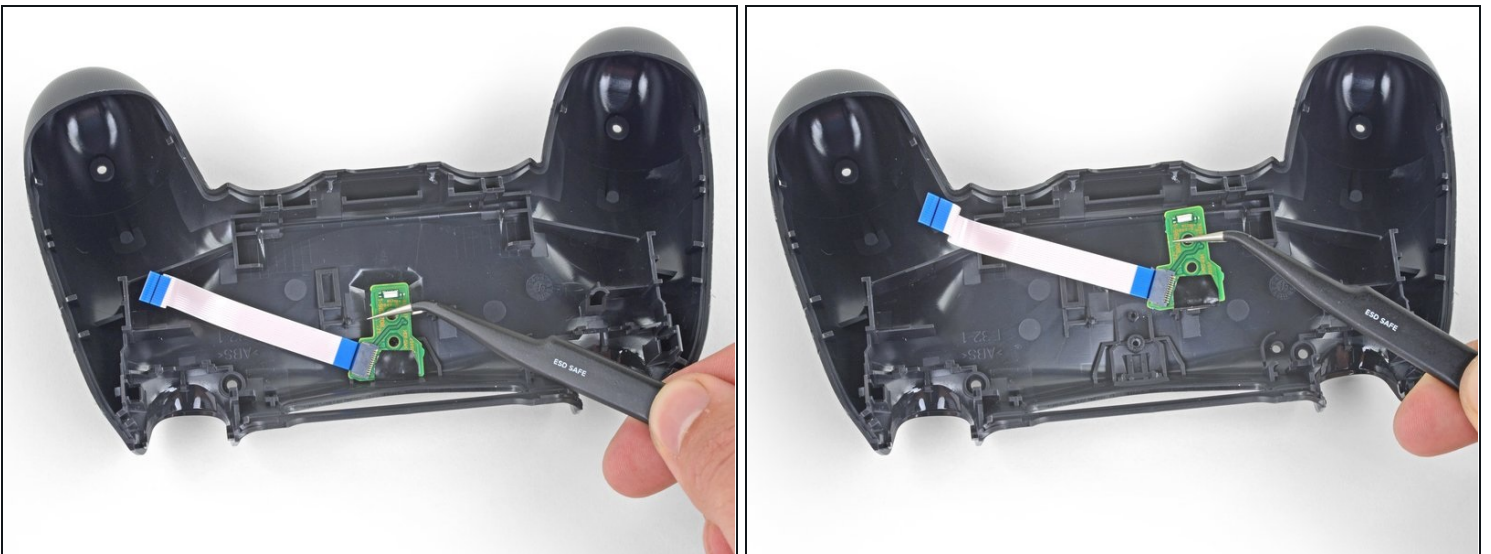
- Use a Phillips screwdriver to remove the 4.4 mm-long screw from the charging assembly.

## Step 11



- Use the pointed end of a spudger to lift the charging assembly away from the rear panel.

## Step 12



- Use your fingers or a pair of [tweezers](#) to remove the charging assembly from the rear panel.



---

**To reassemble your device, follow the above steps in reverse order.**

Take your e-waste to an [R2 or e-Stewards certified recycler](#).

Repair didn't go as planned? Check out our [Answers community](#) for troubleshooting help.