



DualShock 4 CHU-ZCT2U Front Panel Replacement

Follow this guide to replace the front panel on...

Written By: Sam Omiotek



INTRODUCTION

Follow this guide to replace the front panel on a Sony Dualshock 4 CHU-ZCT2U PlayStation controller.



TOOLS:

- [iFixit Opening Tool](#) (1)
- [Phillips #00 Screwdriver](#) (1)
- [Tweezers](#) (1)



PARTS:

- [DualShock 4 Controller Front Panel \(CUH-ZCT2U\)](#) (1)

Step 1 — Remove the rear panel screws



- Use a Phillips screwdriver to remove the four 6.4 mm-long screws from the rear panel.

Step 2 — Separate the rear panel



- ❗ Four fragile plastic clips hold the panels together. You can see their locations more clearly in [this guide](#).
- ❗ The clips help hold the seams together. If you break these clips, the controller will still work.
- Insert an opening tool into the crease where the front and rear panel meet, starting from the outside edge of either handle.
- Gently pry the rear panel off of the front panel until they become partially separated.

Step 3 — Release the plastic clips



- Use the opening tool to separate the panels by releasing the plastic clips around the perimeter of the controller.

Step 4 — Remove the rear panel



- Lift the rear panel directly away from the controller.

⚠ Do not completely remove the rear panel. It is still attached to the controller by a ribbon cable.

Step 5



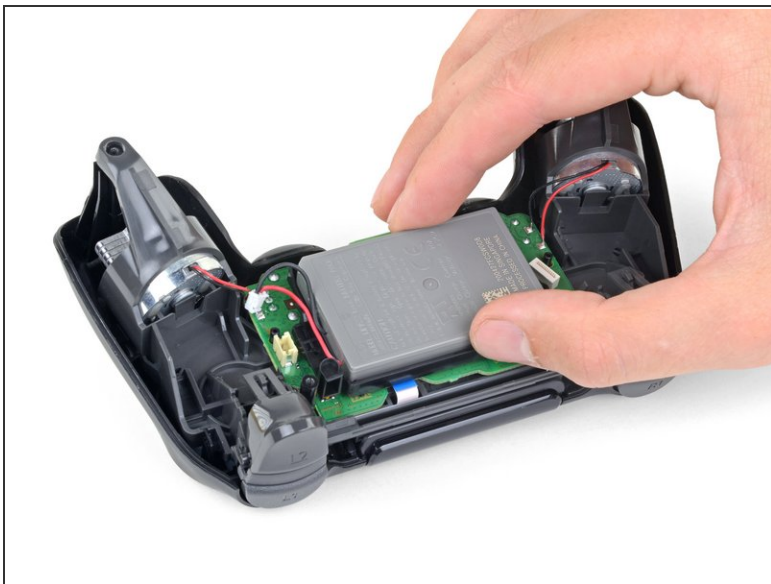
- Use your fingers to gently pull the ribbon cable straight out of its connector on the motherboard.
 - ⓘ Since this cable's pull tab is too small to grab with fingers or tweezers, grab the cable itself. Otherwise utilize pull tabs whenever possible.
- ☑ During reassembly, grab the ribbon cable by the blue tab and gently press the cable straight into the connector. Push the blue tab rather than the ribbon cable itself.

Step 6 — Remove the battery



- Use a pair of tweezers to pull the battery's power connector straight up from the motherboard.

Step 7



- Remove the battery.

Step 8 — Remove the motherboard



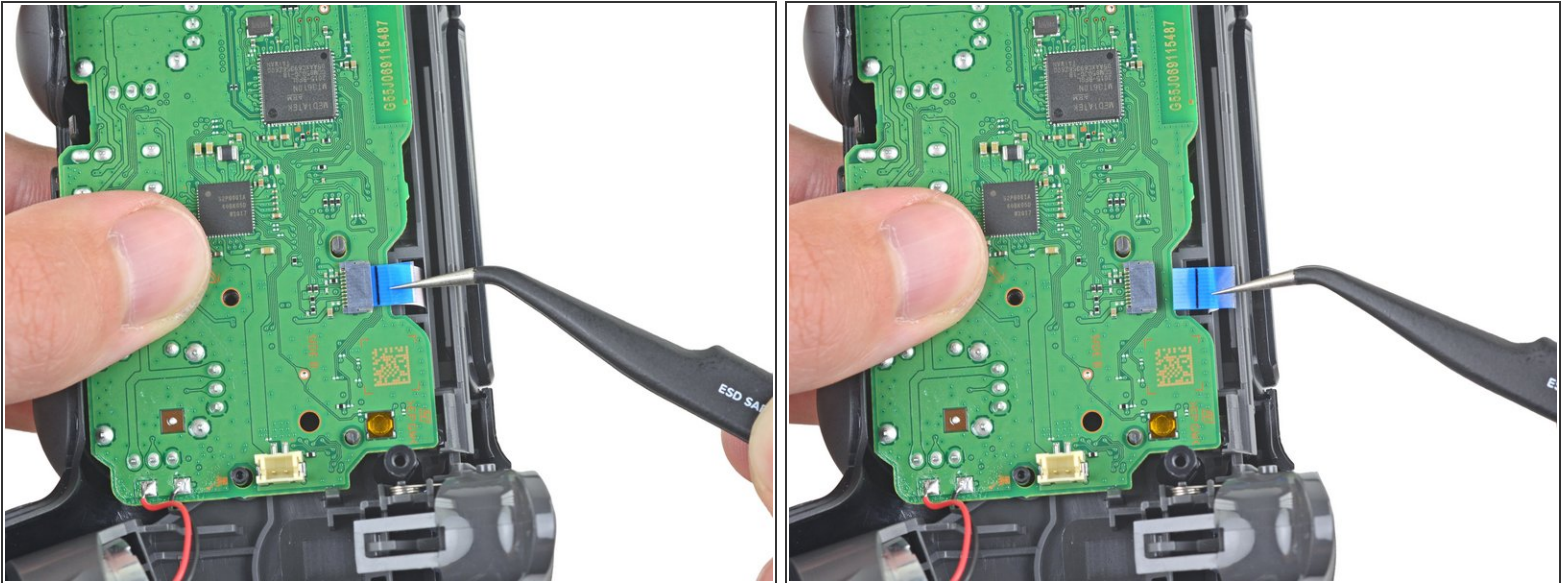
- Use a Phillips screwdriver to remove the 6.4 mm-long screw securing the battery bracket.

Step 9



- Remove the battery bracket.

Step 10



- Use a pair of tweezers to disconnect the touch panel ribbon cable.
- ❗ Pull the ribbon cable directly away from its connector on the motherboard by the blue pull tab, not by the cable itself.

Step 11



- Separate the motherboard and midframe assembly from the front panel.

Step 12 — Remove the touchpad



- Push the bottom of the touchpad in from the front side of the controller to separate it from the front case.
- Remove the touchpad from the bezel holding it to the front case.

Step 13 — Remove the buttons



- Use your fingers or a pair of tweezers to remove the three silicone conductive rubber pads from the controller buttons.

Step 14



- Slowly turn over the front panel to let the buttons fall out.
 - Only the front panel remains.
- ✦ The round buttons have unique notches designed to prevent them from being installed incorrectly.

Step 15 — Reassembly tip



- ✦ During reassembly, use your fingers or a pair of tweezers to drop the buttons into their respective holes on the front panel.
 - Align the button notches to ensure each one is fully inserted and in the correct location.

To reassemble your device, follow the above steps in reverse order.

Repair didn't go as planned? Check out our [Answers community](#) for troubleshooting help.