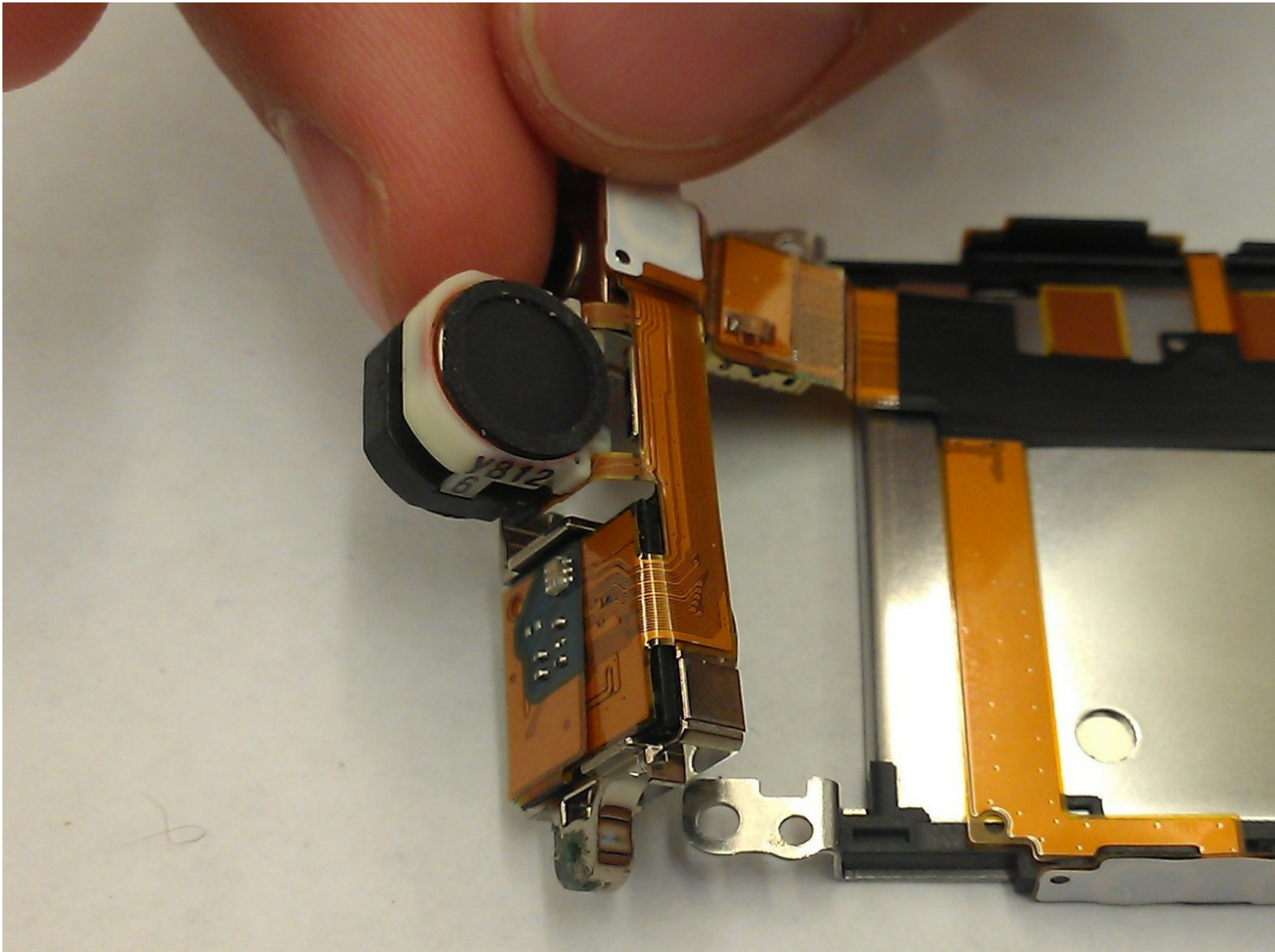




Reaching the Speaker and Camera in SONY Ericsson W890i Cell Phone

How to reach the speaker/camera in your phone in order to replace.

Written By: Bob



INTRODUCTION

Many times, the speaker or the camera in this model of the Sony Ericsson cease to function. This is a guide that will show you how to reach these so that you can replace them quickly and without needing to send it in.



TOOLS:

- [Tweezers](#) (1)
 - [Spudger](#) (1)
 - [T6 Torx Screwdriver](#) (1)
 - [Phillips #00 Screwdriver](#) (1)
-

Step 1 — Battery



- Flick the two lock tabs into the unlocked positions by pushing each button forward.

Step 2



- Pop the back cover up using the groove on the top of the phone.

Step 3



- You can now access the phone's battery.
- Using a spudger, remove the battery and set it aside.

Step 4 — Speaker or Camera



- Two rubber buttons cover the bottom two screws. Remove these rubber coverings to access the phone screws.
- Using a T6 torx wrench, remove the four small screws at the top and bottom corners on the backside of the phone.

Step 5



- Carefully pry off the faceplate using a spudger. Insert the spudger into the middle of the phone.
- Start near a button and carefully work your way around the phone until the faceplate pops off.

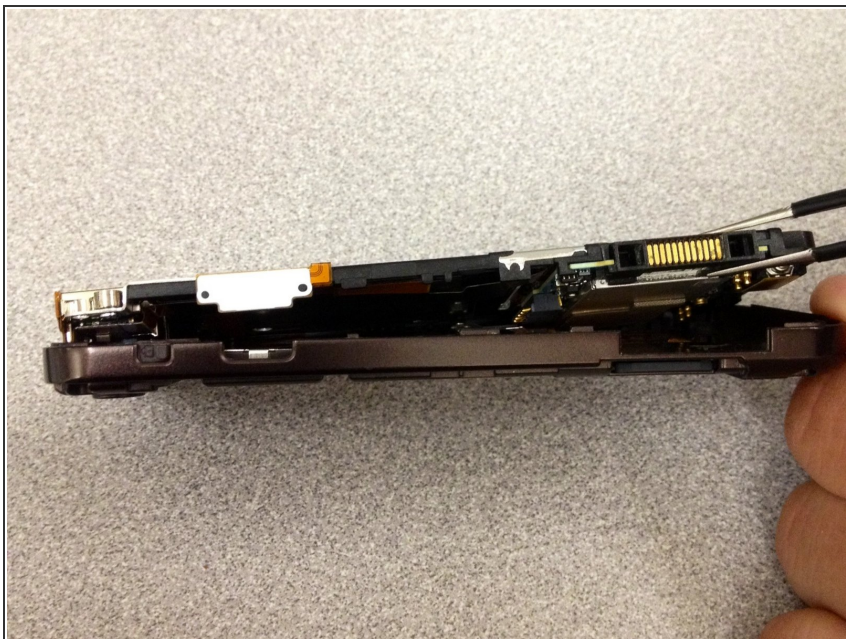
Step 6



- Remove the plastic and metal buttons located around the seam and place off to the side.

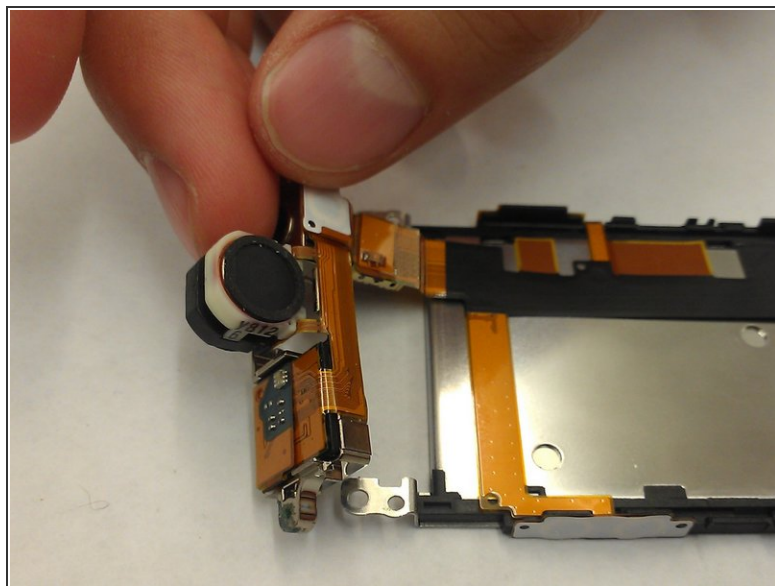
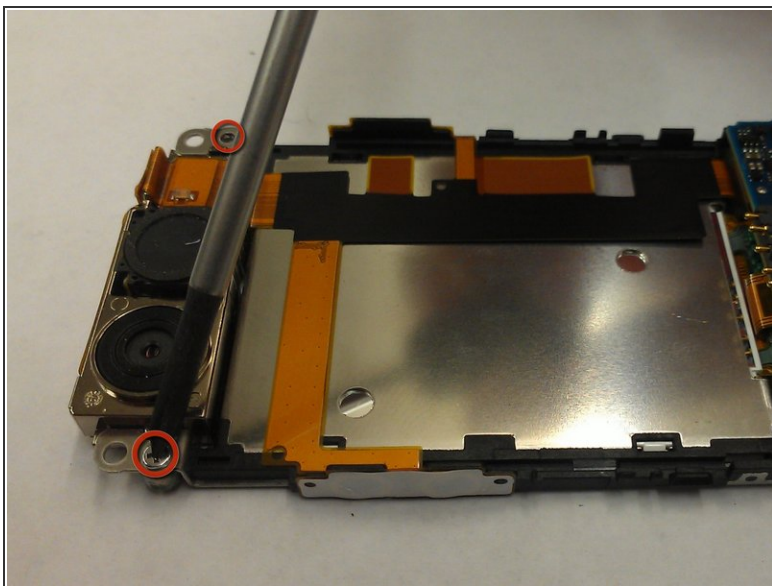
⚠ Be careful not to lose them!

Step 7



- With a tweezer, pry off the back metal plate.

Step 8



- The speaker and camera combo is accessible after the removal of two small #00 screws. Use the #00 Philips Screwdriver for this step.
- The piece is now free to move from the phone core.

To reassemble your device, follow these instructions in reverse order.