



Nintendo GameCube Top Case Replacement

Removing the top case will allow you access to...

Written By: dcarlin



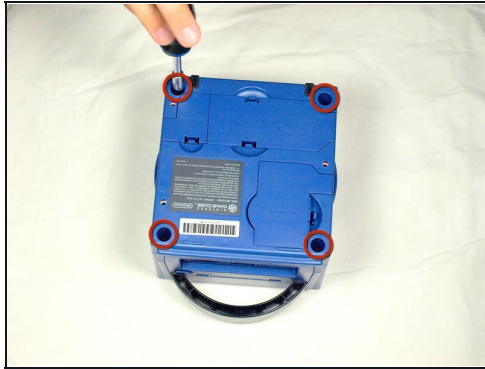
INTRODUCTION

Removing the top case will allow you access to the GameCube's internal parts.

🔧 TOOLS:

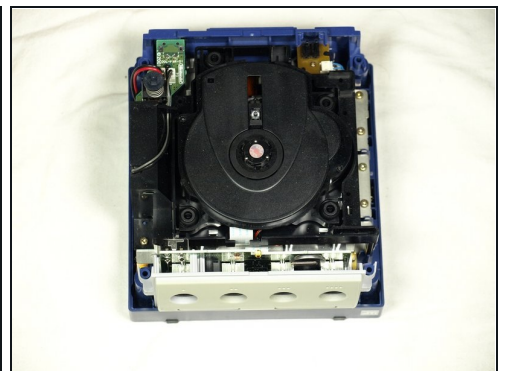
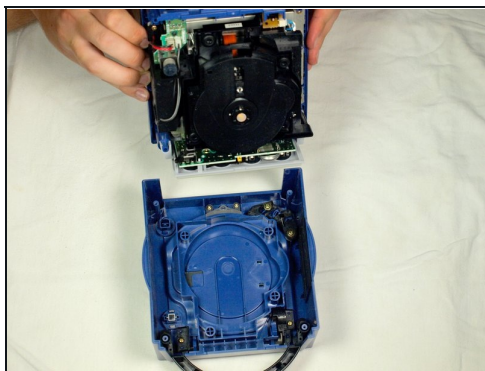
Gamebit 4.5mm (1)

Step 1 — Top Case



- Turn over the Gamecube so that the bottom side is facing up.
- Use the 4.5 mm Gamebit screwdriver to remove all four screws.

Step 2



- With the bottom side of the GameCube facing upward and the screws removed, carefully pull the outer shell of the unit away from the top half.
- Move the GameCube so that the inside is facing upwards.

To reassemble your device, follow these instructions in reverse order.