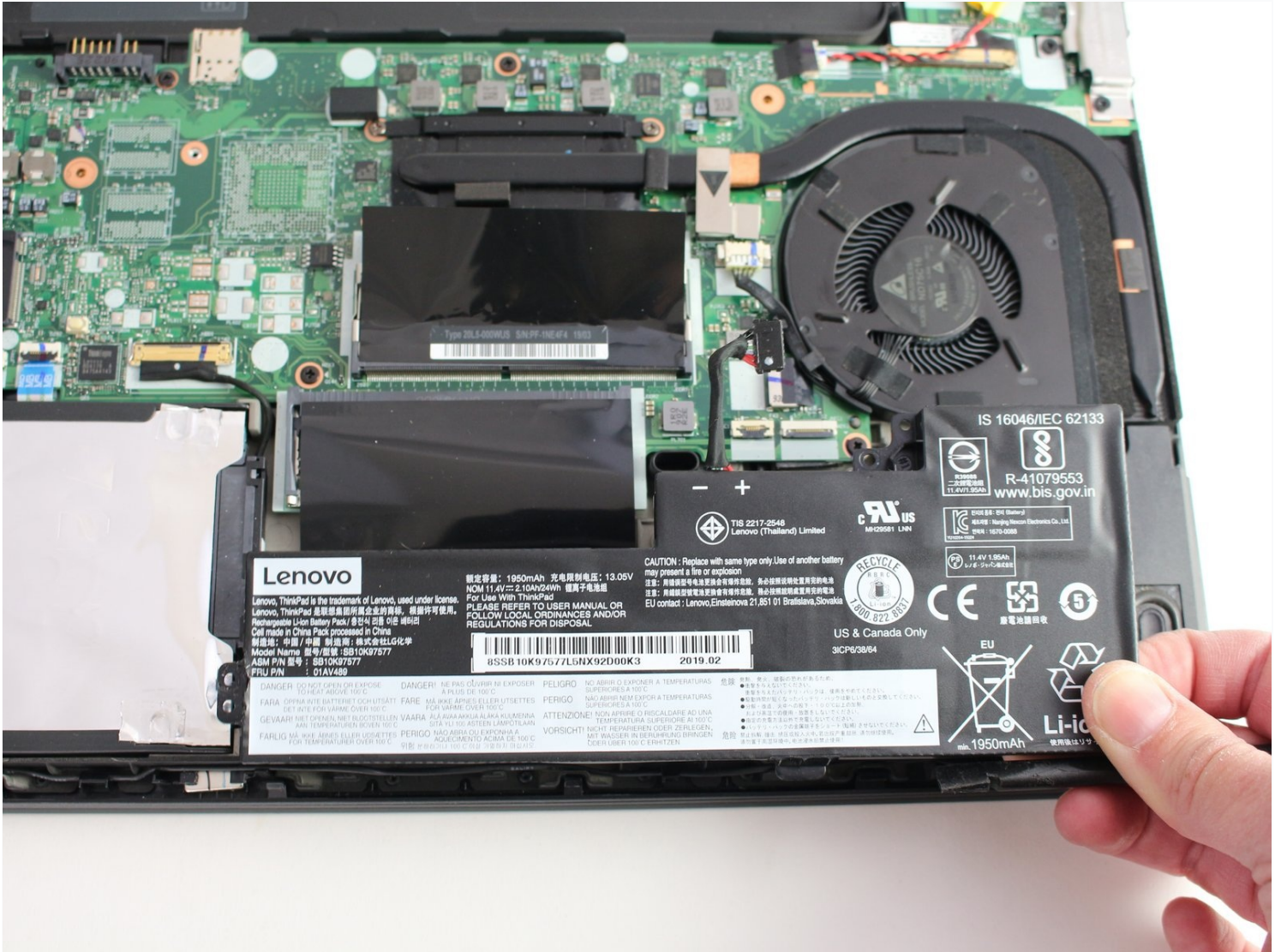




# Lenovo ThinkPad T480 Internal Battery Replacement

The internal battery of a laptop supplies power...

Written By: Sarah Westberg



# INTRODUCTION

The internal battery of a laptop supplies power to the device when it is not plugged into an outlet. When the battery begins to lose power, has started to drain quickly or is damaged (like in the case of a [swollen battery](#)), you will want to replace the battery of your Lenovo ThinkPad T480.

This guide will walk you through the steps to replacing the internal laptop battery of your Lenovo ThinkPad T480.

Prior to beginning this guide, be sure to [disable the internal battery](#) first, then turn off the device and remove it from the charging cable.

---

## TOOLS:

Phillips #1 Screwdriver (1)  
iFixit Opening Tool (1)  
Spudger (1)

## PARTS:

Lenovo ThinkPad P51s, P52S, T470, T480, T570, T580, and TP25 Battery (1)  
Lenovo 01AV421 Laptop Battery (1)

---

## Step 1 — External Battery



 [Disable the battery](#), power down, and unplug your device before you begin.

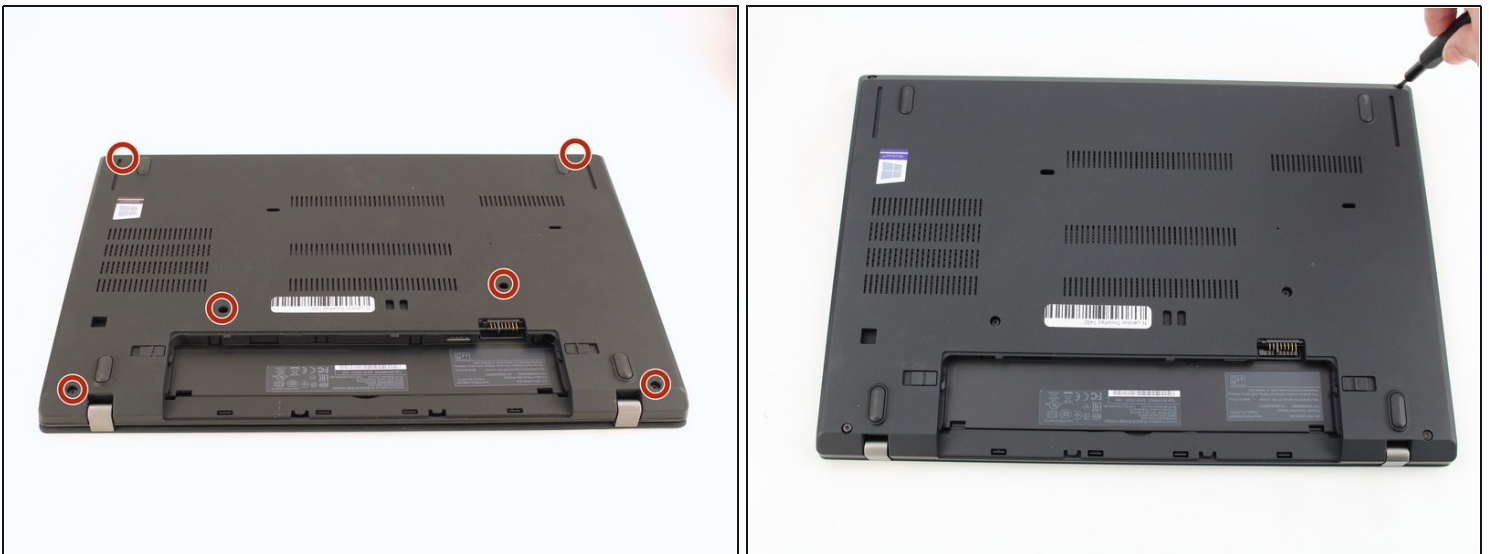
- Flip the laptop over so the bottom of the device is showing.

## Step 2



- Using your fingers, slide the lock on each side of the battery to the unlocked position.
- Remove the battery from the slot.

## Step 3 — Back Cover



- Using the Phillips #1 screwdriver, loosen the six captive screws.

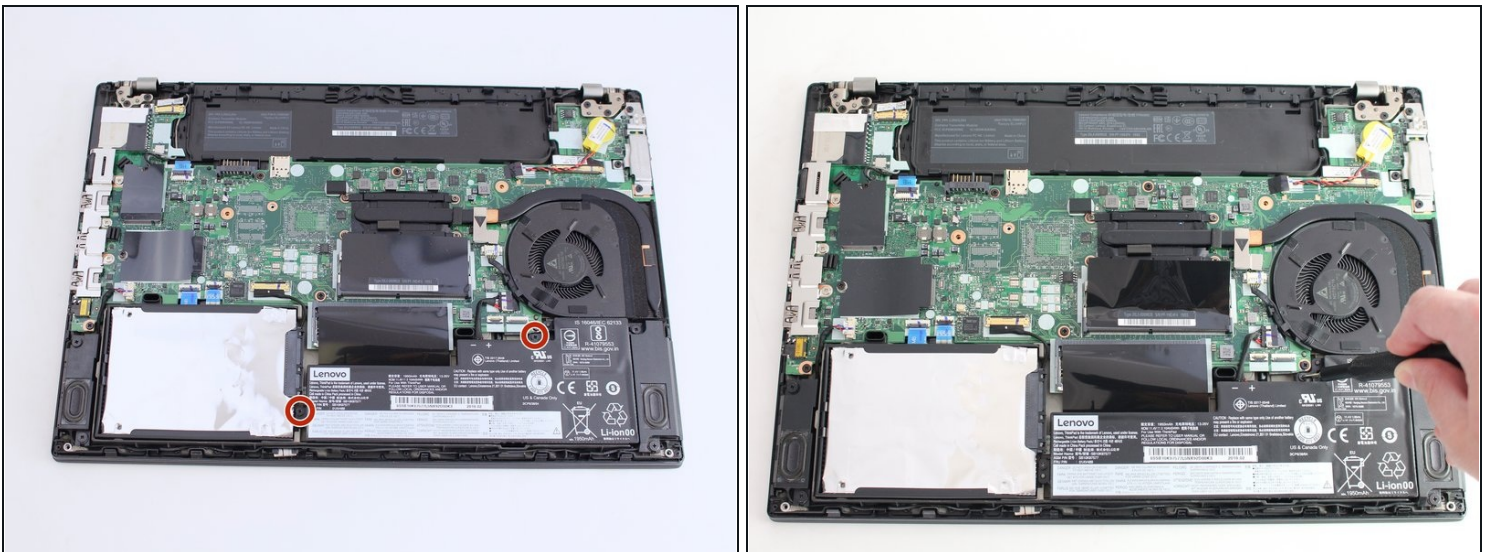


## Step 4



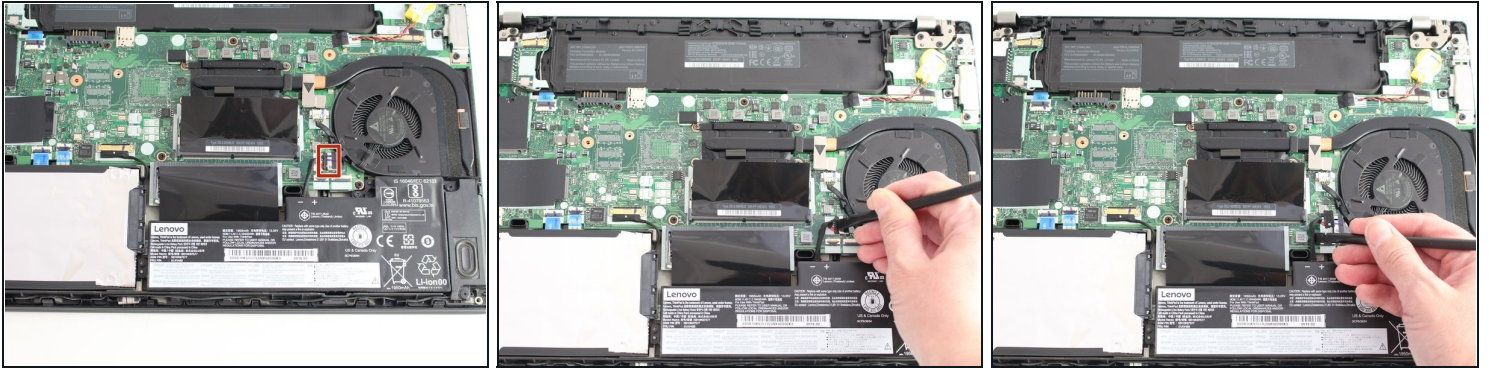
- Insert the blue plastic opening tool into the space between the lower case and the chassis.
- Slide the opening tool around the perimeter of the case to release the clips holding the case and the chassis together.
- ❗ If it feels like the battery well portion of the back cover isn't loose, these clips may be holding the cover to the laptop. Use your opening tool to pry the clips loose and try removing the cover again.
- Remove the back case.

## Step 5 — Internal Battery



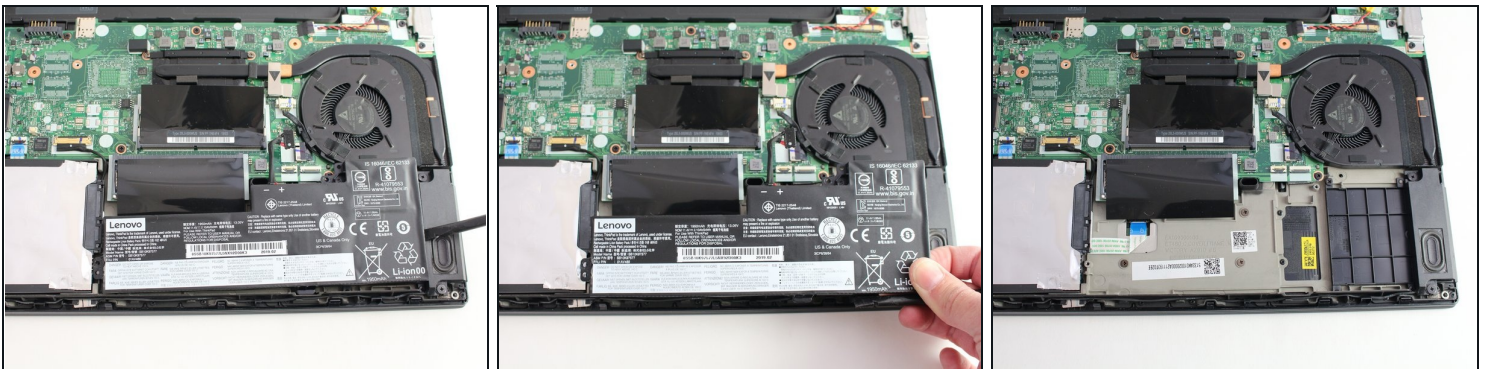
- Using the Phillips #1 screwdriver, remove the two 4.6 mm screws securing the internal battery to the frame.

## Step 6



- Use the spudger to slide the battery socket connector parallel to the motherboard and out of its socket on the motherboard.

## Step 7



- Using the black nylon spudger, wedge the battery up from the case and lift it out.

**To reassemble your device, follow the above steps in reverse order.**

Take your e-waste to an [R2 or e-Stewards certified recycler](#).

Repair didn't go as planned? Try some [basic troubleshooting](#), or ask our Answers community for help.