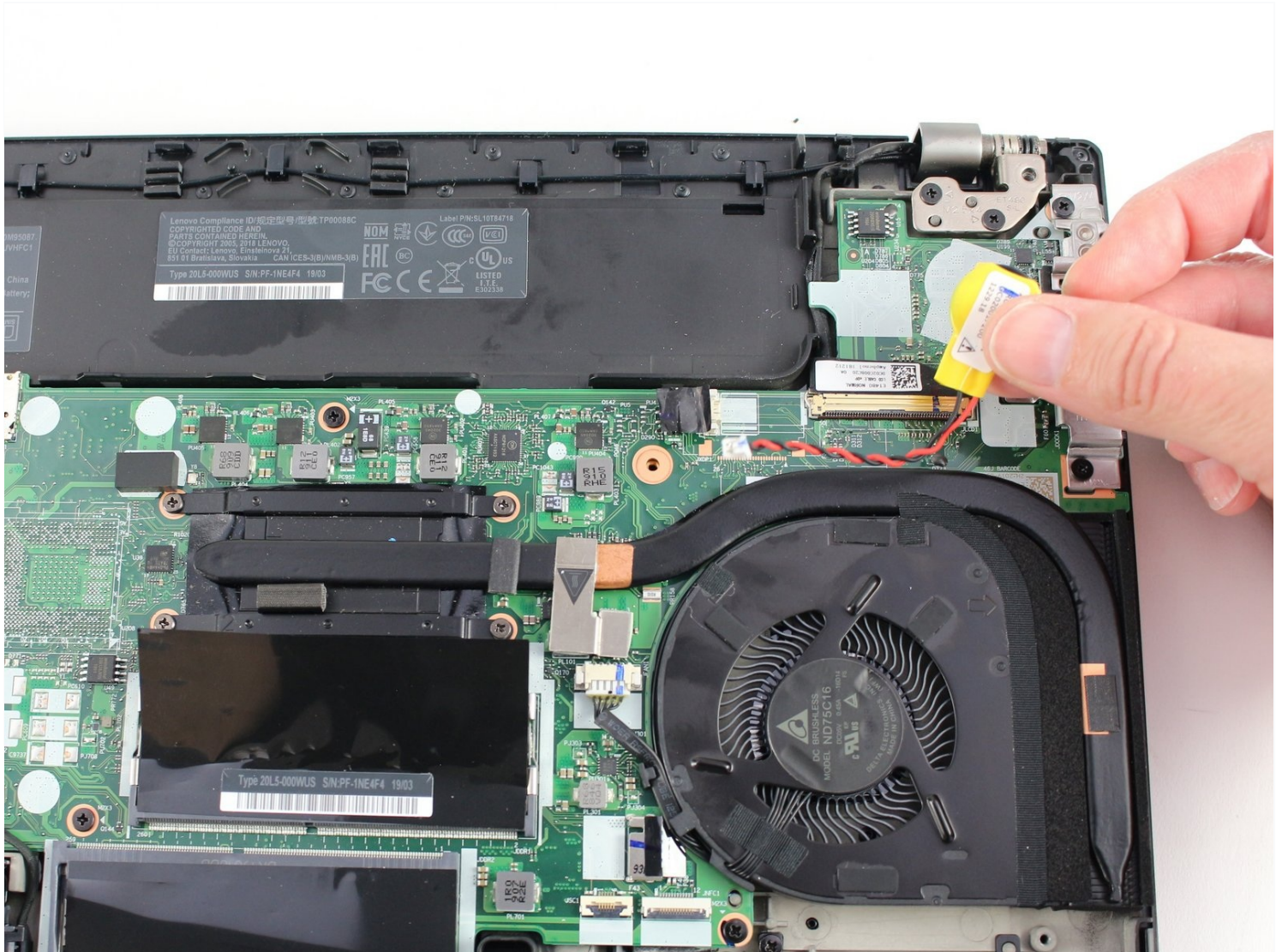




# Lenovo ThinkPad T480 CMOS Battery Replacement

If the coin cell or CMOS battery of your Lenovo...

Written By: Sarah Westberg



# INTRODUCTION

If the coin cell or CMOS battery of your Lenovo ThinkPad T480 begins to fail, follow this guide to replace it.

The CMOS or coin cell battery provides power to the CMOS (complementary metal oxide semiconductor) chip. Some signs of CMOS battery failure include: settings in the computer setup changing, the clock resetting, “Booting Error” messages, the laptop running slowly, or the laptop shutting down.

Prior to beginning this repair, be sure to [disable the internal battery](#), shut down the laptop, and disconnect from the external power source.

---

## 🔧 TOOLS:

Phillips #1 Screwdriver (1)

iFixit Opening Tool (1)

Spudger (1)

---

## Step 1 — External Battery



⚠️ [Disable the battery](#), power down, and unplug your device before you begin.

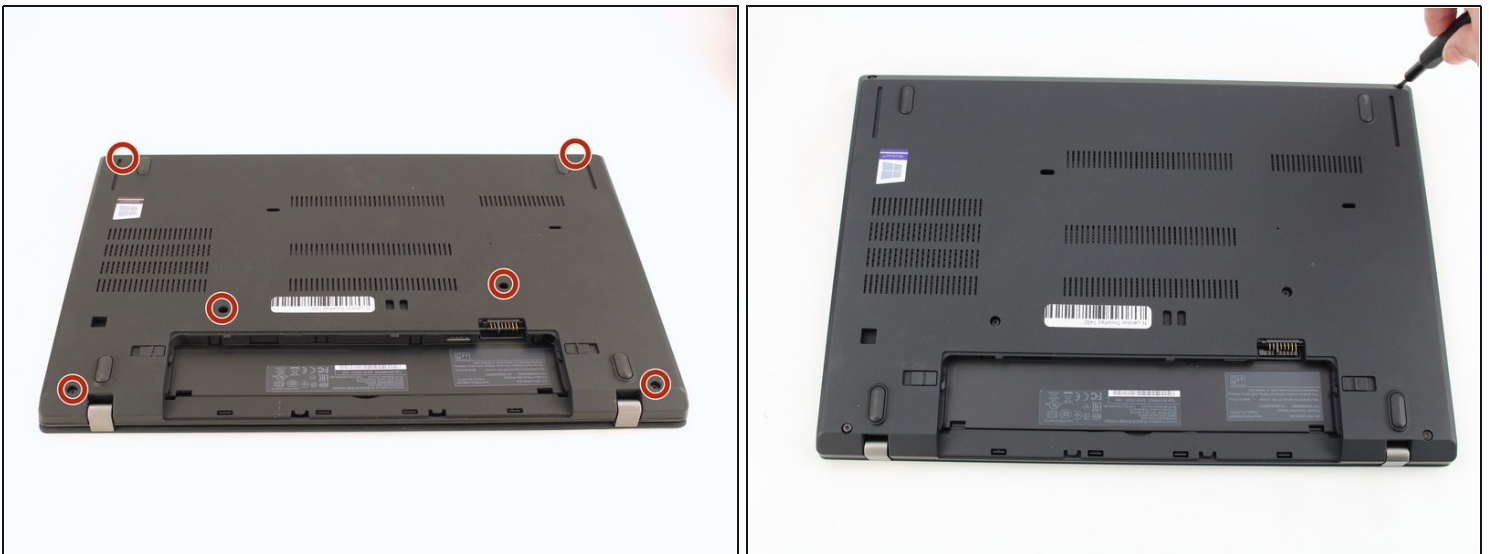
- Flip the laptop over so the bottom of the device is showing.

## Step 2



- Using your fingers, slide the lock on each side of the battery to the unlocked position.
- Remove the battery from the slot.

## Step 3 — Back Cover



- Using the Phillips #1 screwdriver, loosen the six captive screws.

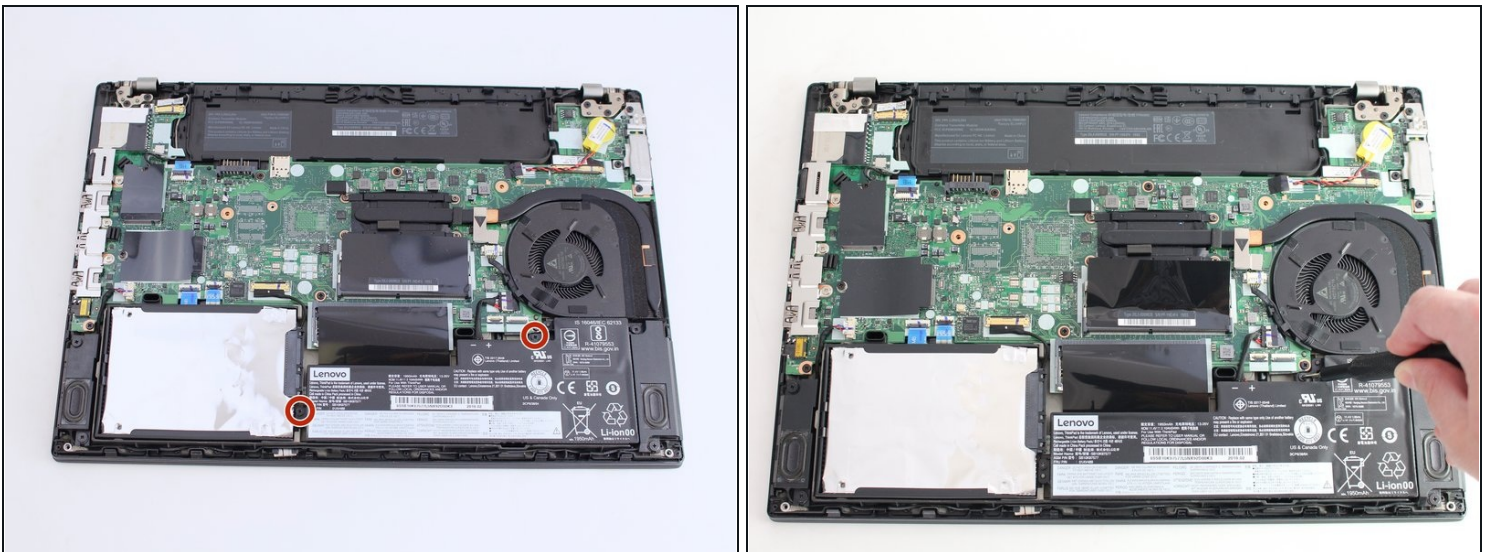


## Step 4



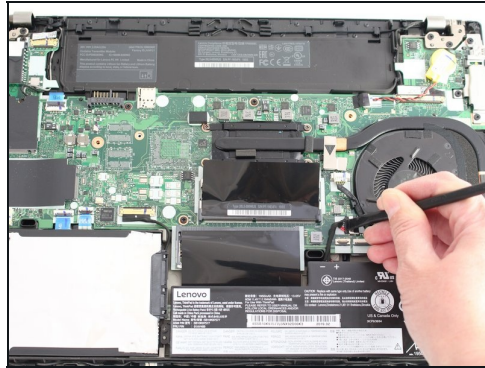
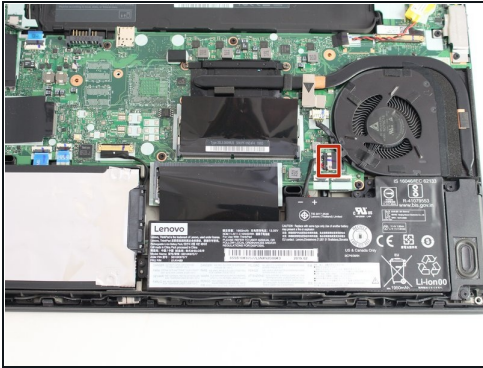
- Insert the blue plastic opening tool into the space between the lower case and the chassis.
- Slide the opening tool around the perimeter of the case to release the clips holding the case and the chassis together.
- ⓘ If it feels like the battery well portion of the back cover isn't loose, these clips may be holding the cover to the laptop. Use your opening tool to pry the clips loose and try removing the cover again.
- Remove the back case.

## Step 5 — Internal Battery



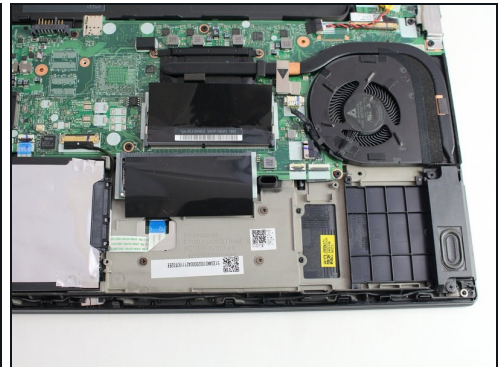
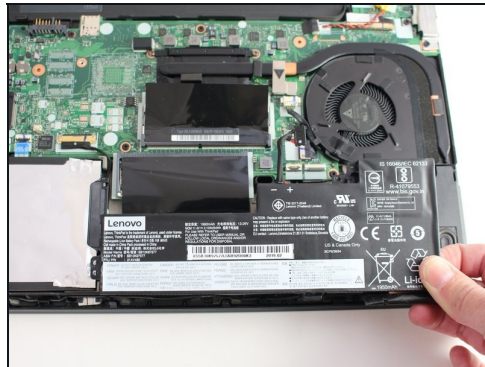
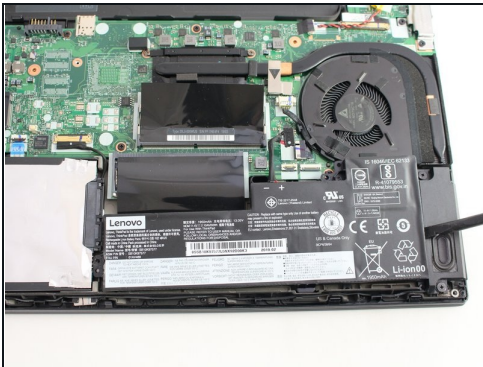
- Using the Phillips #1 screwdriver, remove the two 4.6 mm screws securing the internal battery to the frame.

## Step 6



- Use the spudger to slide the battery socket connector parallel to the motherboard and out of its socket on the motherboard.

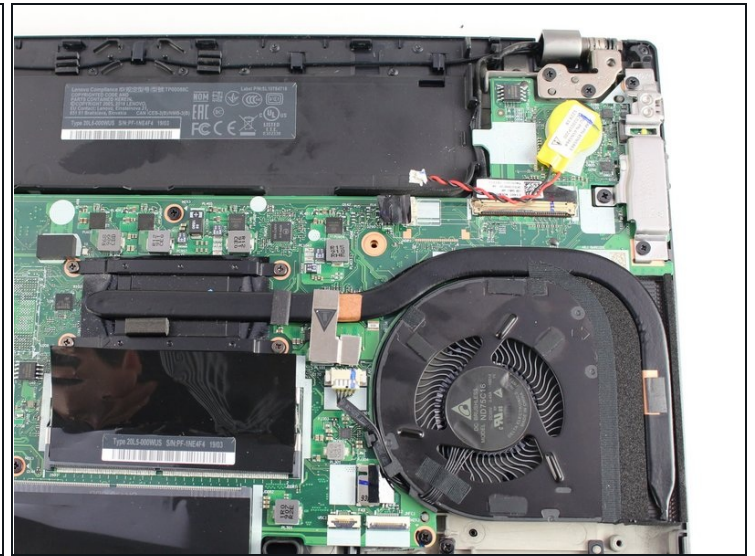
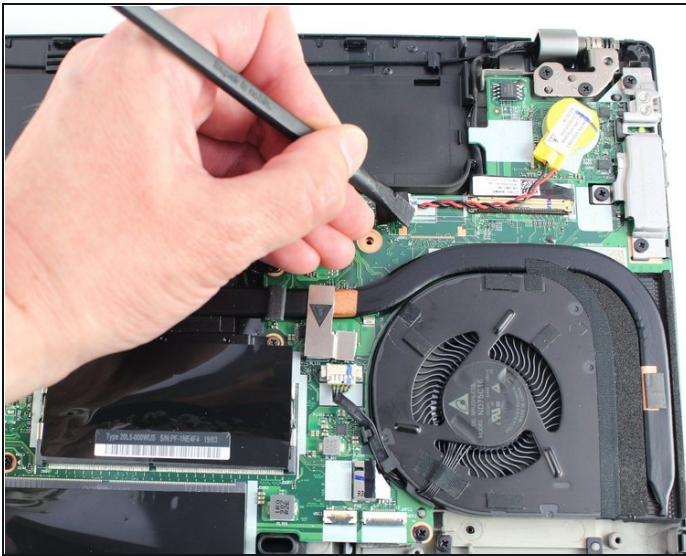
## Step 7



- Using the black nylon spudger, wedge the battery up from the case and lift it out.



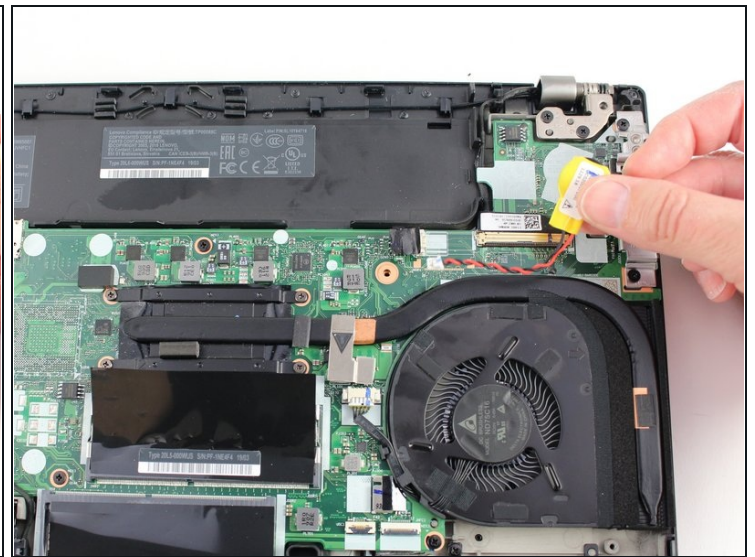
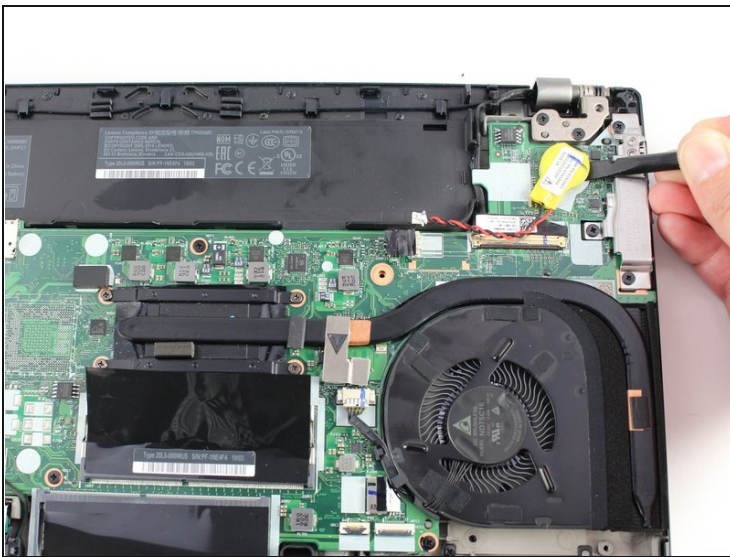
## Step 8 — CMOS Battery



- Using an IC extractor or black nylon spudger, unplug the connector from the socket on the motherboard.

⚠ This connector may be very difficult to remove and is easily damaged. Be careful that you don't damage the port when removing the coin cell battery connector.

## Step 9



- Using the black nylon spudger, pry the coin cell battery off of the motherboard.

ⓘ The coin cell battery is stuck to the board with a light adhesive.

---

**To reassemble your device, follow the above steps in reverse order.**

Take your e-waste to an [R2 or e-Stewards certified recycler](#).

Repair didn't go as planned? Try some [basic troubleshooting](#), or ask our Answers community for help.