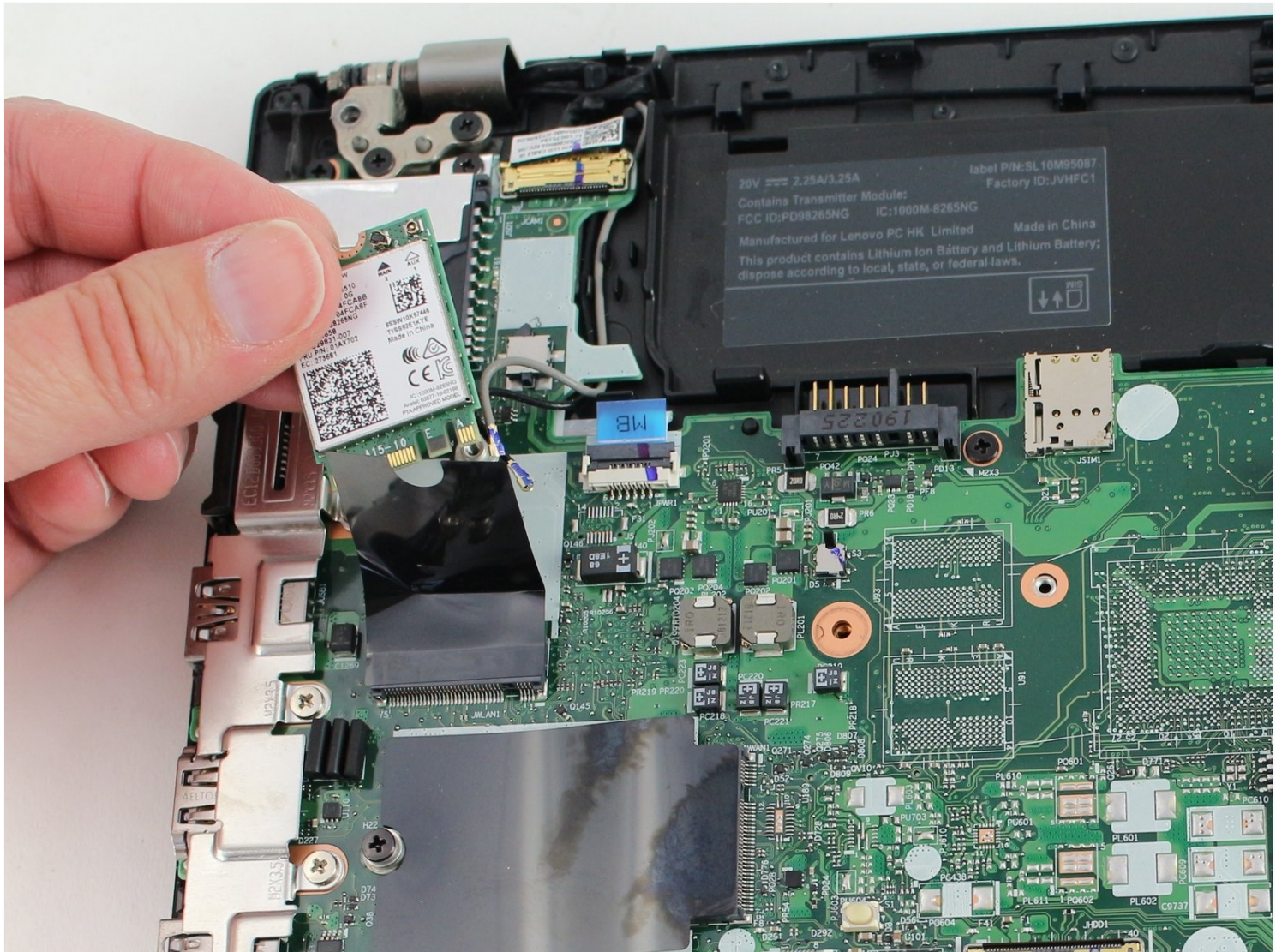




# Lenovo ThinkPad T480 Wi-Fi Card Replacement

The Wi-Fi card communicates with your wireless...

Written By: Sarah Westberg



# INTRODUCTION

The Wi-Fi card communicates with your wireless network through the router. If it is in range, your laptop will be able to connect to the internet if it's not password protected. If your Wi-Fi card is failing, follow this guide to replace your Lenovo ThinkPad T480 Wi-Fi Card.

The main symptom of a failing Wi-Fi card is problems with connectivity—more specifically failure to locate wireless connections, intermittent wireless connections and loss of connectivity due to hardware damage.

Prior to beginning this guide, be sure to [disable the internal battery](#), power off the device, and unplug the laptop from the charging cable.



## TOOLS:

Phillips #1 Screwdriver (1)  
iFixit Opening Tool (1)  
Spudger (1)



## PARTS:

01AX792 - Lenovo Laptop Wireless Module - Genuine (1)  
01AX761 - Lenovo Laptop WWAN Card - Genuine (1)

## Step 1 — External Battery



 [Disable the battery](#), power down, and unplug your device before you begin.

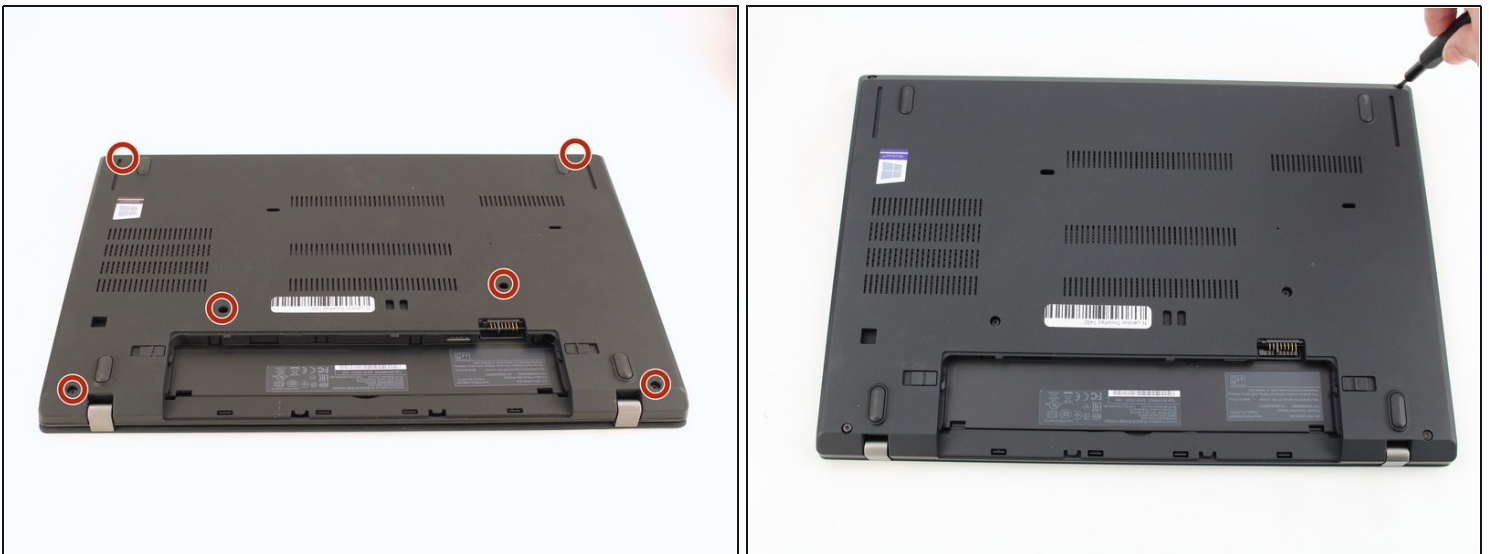
- Flip the laptop over so the bottom of the device is showing.

## Step 2



- Using your fingers, slide the lock on each side of the battery to the unlocked position.
- Remove the battery from the slot.

## Step 3 — Back Cover



- Using the Phillips #1 screwdriver, loosen the six captive screws.

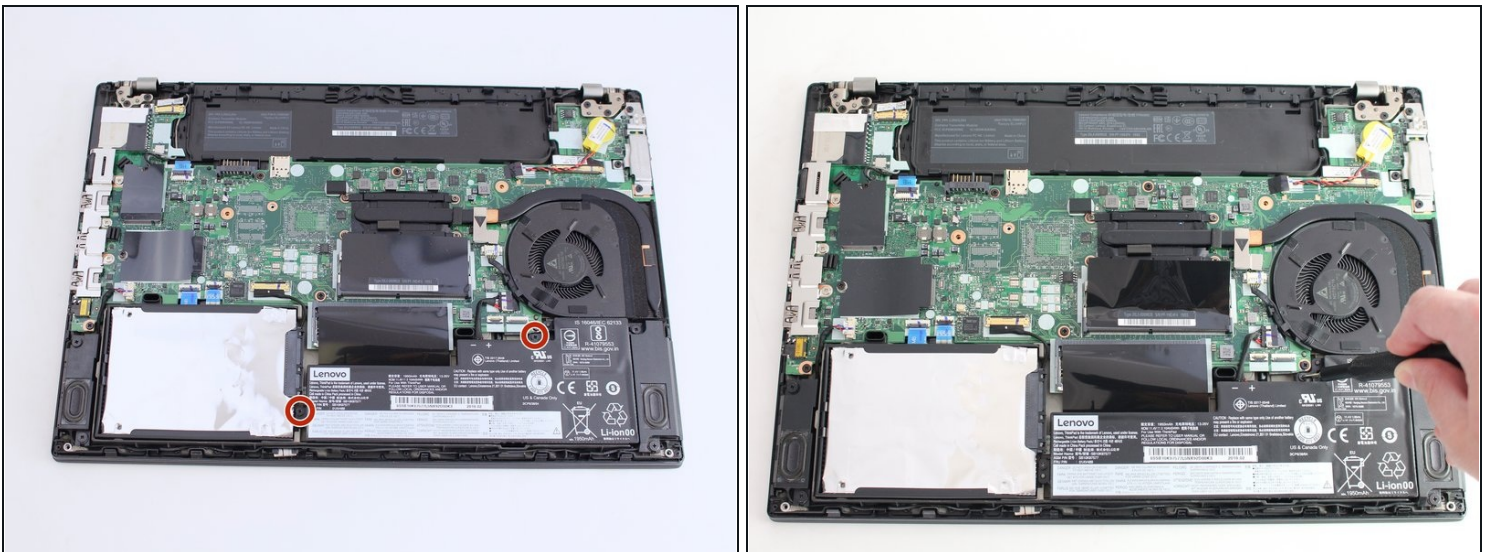


## Step 4



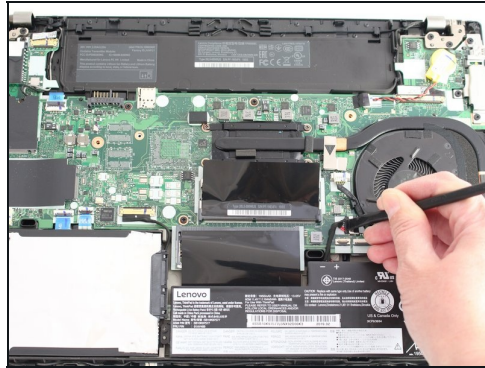
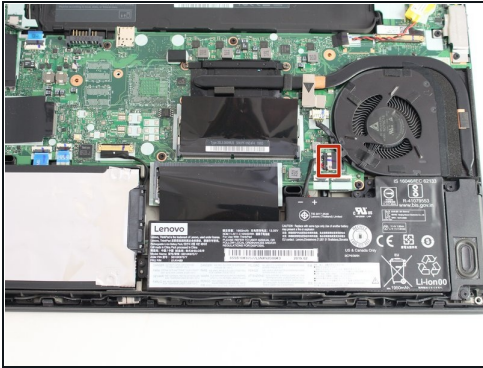
- Insert the blue plastic opening tool into the space between the lower case and the chassis.
- Slide the opening tool around the perimeter of the case to release the clips holding the case and the chassis together.
- ❗ If it feels like the battery well portion of the back cover isn't loose, these clips may be holding the cover to the laptop. Use your opening tool to pry the clips loose and try removing the cover again.
- Remove the back case.

## Step 5 — Internal Battery



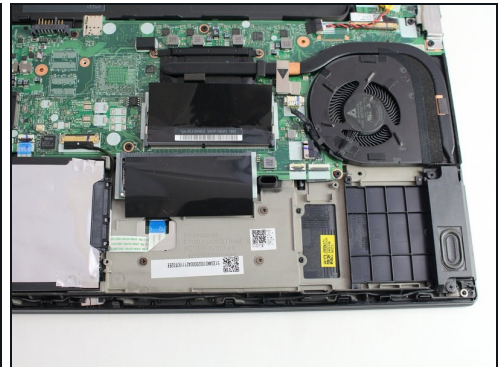
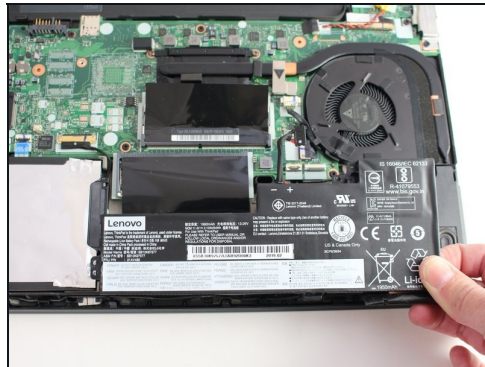
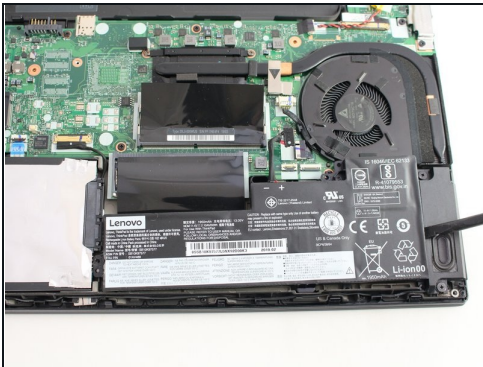
- Using the Phillips #1 screwdriver, remove the two 4.6 mm screws securing the internal battery to the frame.

## Step 6



- Use the spudger to slide the battery socket connector parallel to the motherboard and out of its socket on the motherboard.

## Step 7



- Using the black nylon spudger, wedge the battery up from the case and lift it out.

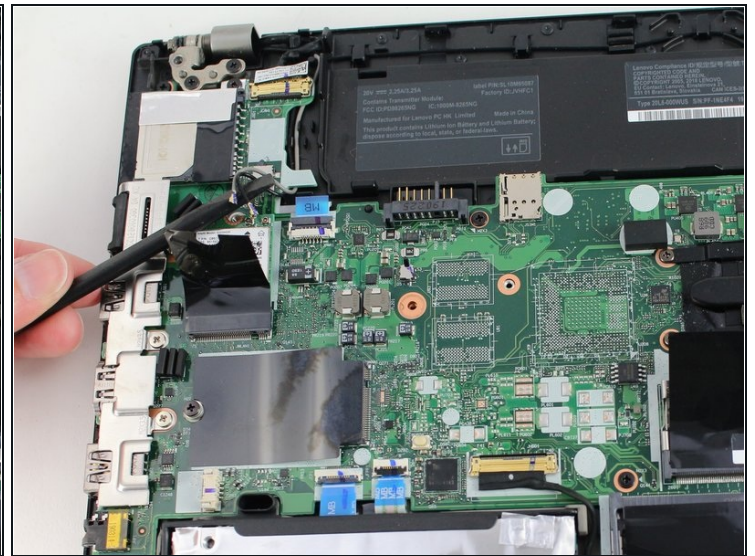


## Step 8 — Wi-Fi Card



- Using the Phillips #1 screwdriver, remove the single 3.6 mm screw at the top of the Wi-Fi card attaching it to the motherboard.

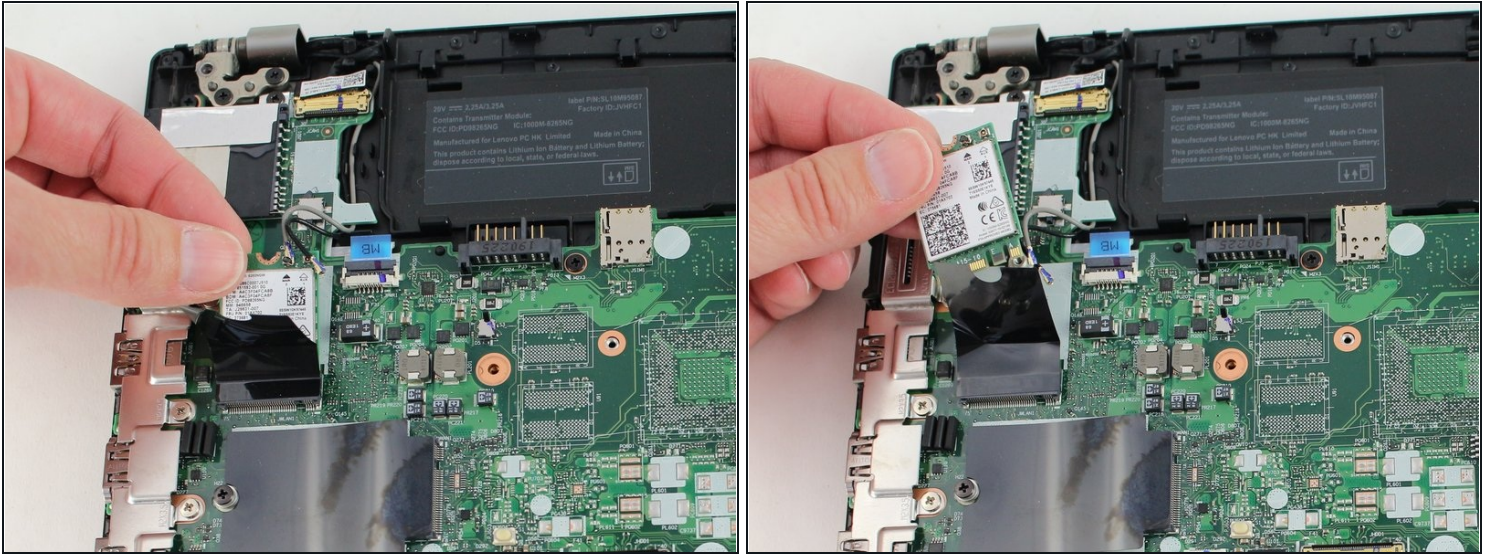
## Step 9



- Insert the point of a spudger under one of the antenna cables close to the connector. Pry straight up to disconnect the cable off of the Wi-Fi card.

⚠ Be careful as you pry the cables off of the Wi-Fi card as they are fragile and easily damaged.

## Step 10



- Slide the Wi-Fi card out from the slot to remove it from the board.

**To reassemble your device, follow the above steps in reverse order.**

Take your e-waste to an [R2 or e-Stewards certified recycler](#).

Repair didn't go as planned? Try some [basic troubleshooting](#), or ask our Answers community for help.