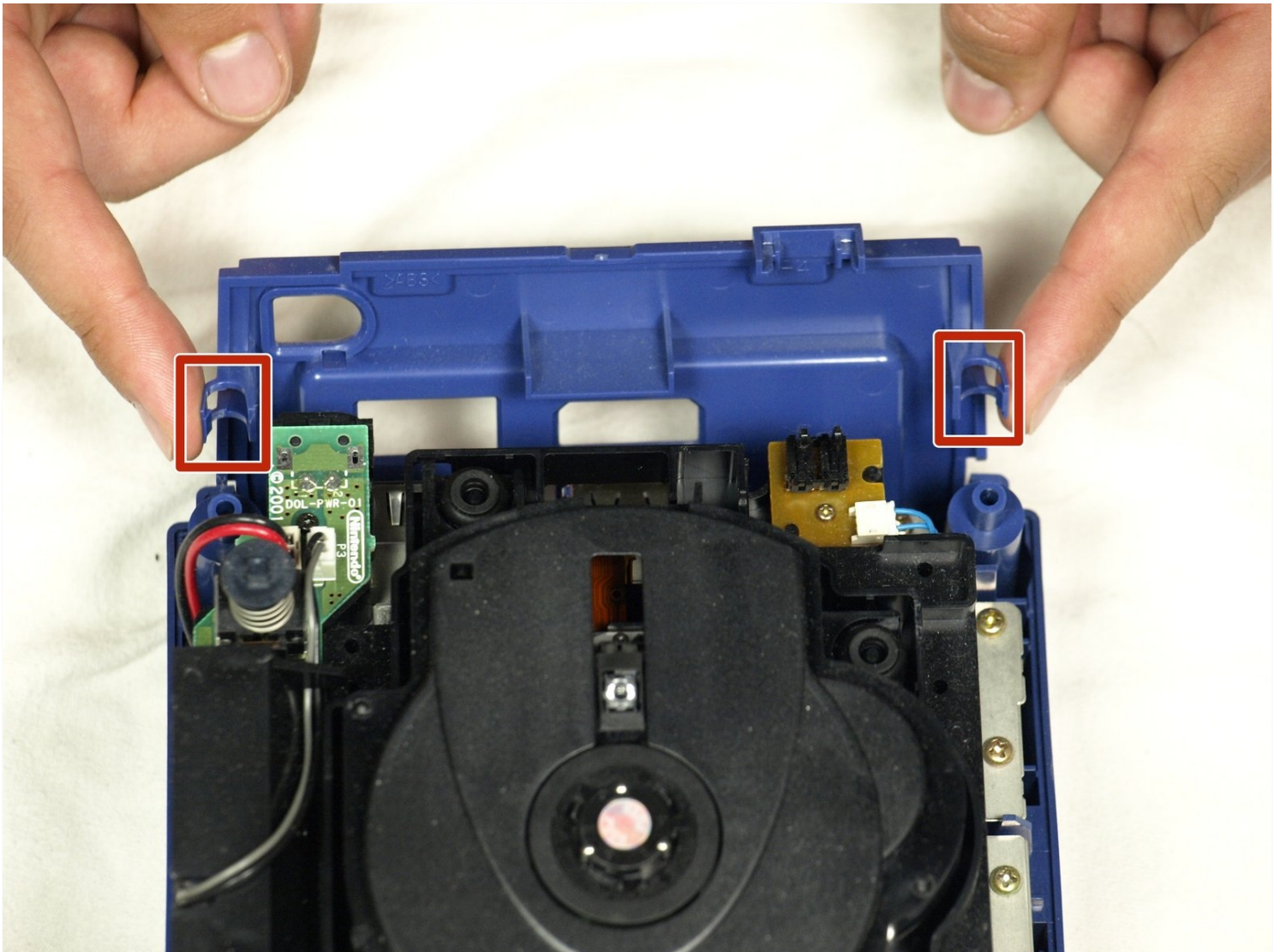




# Nintendo GameCube Front and Back Panel Replacement

Removing these panels allows further access to...

Written By: dcarlin



# INTRODUCTION

Removing these panels allows further access to the GameCube's components.

## TOOLS:

Gamebit 4.5mm (1)

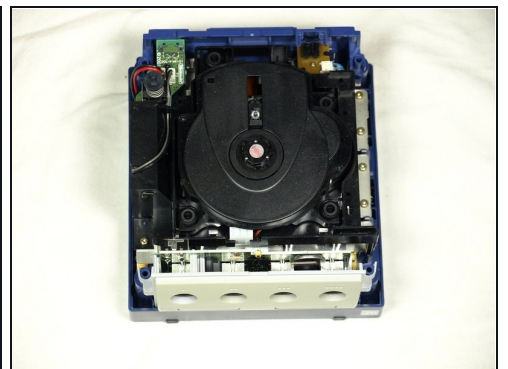
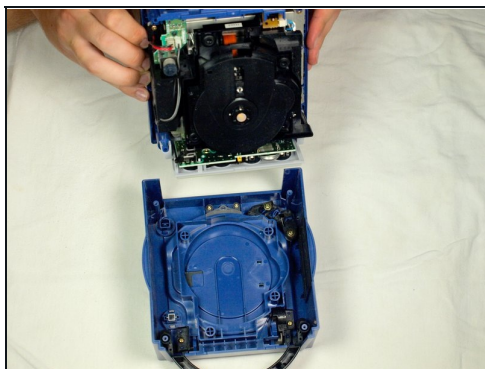
Phillips #2 Screwdriver (1)

## Step 1 — Top Case



- Turn over the Gamecube so that the bottom side is facing up.
- Use the 4.5 mm Gamebit screwdriver to remove all four screws.

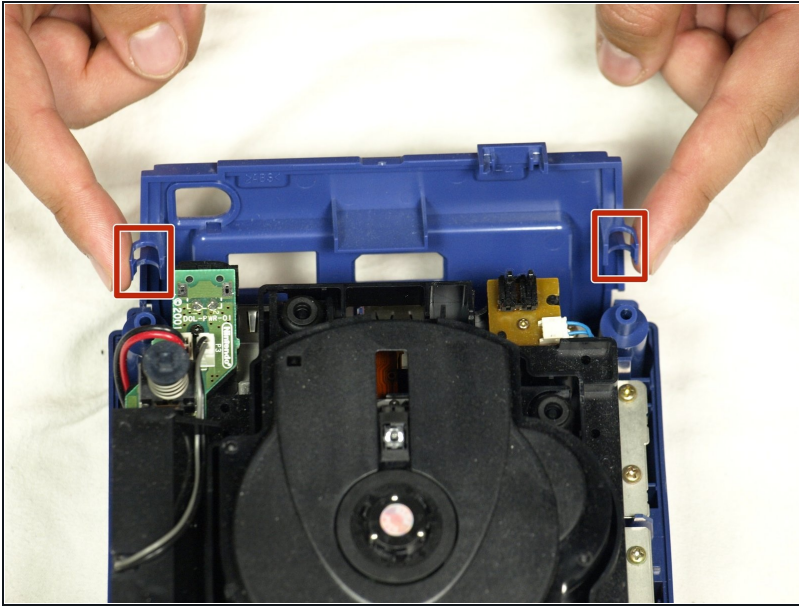
## Step 2



- With the bottom side of the GameCube facing upward and the screws removed, carefully pull the outer shell of the unit away from the top half.
- Move the GameCube so that the inside is facing upwards.

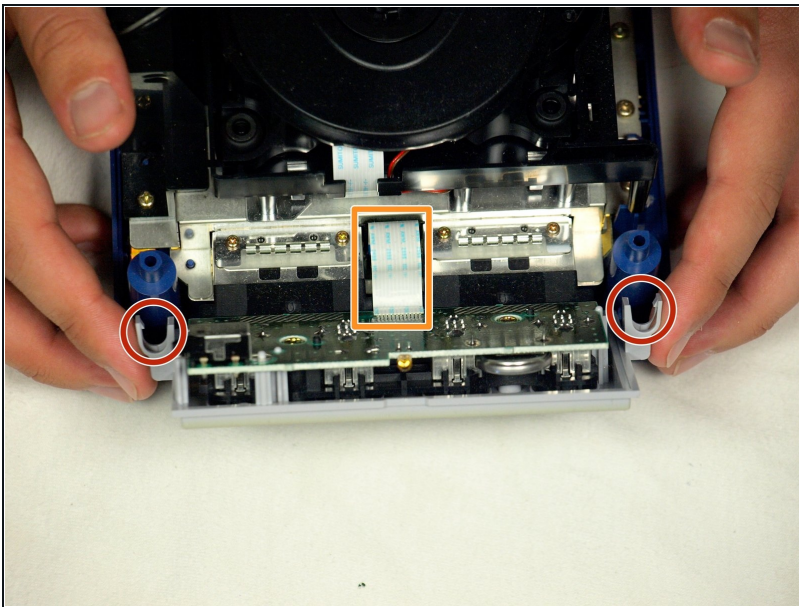


### Step 3 — Removing the back panel



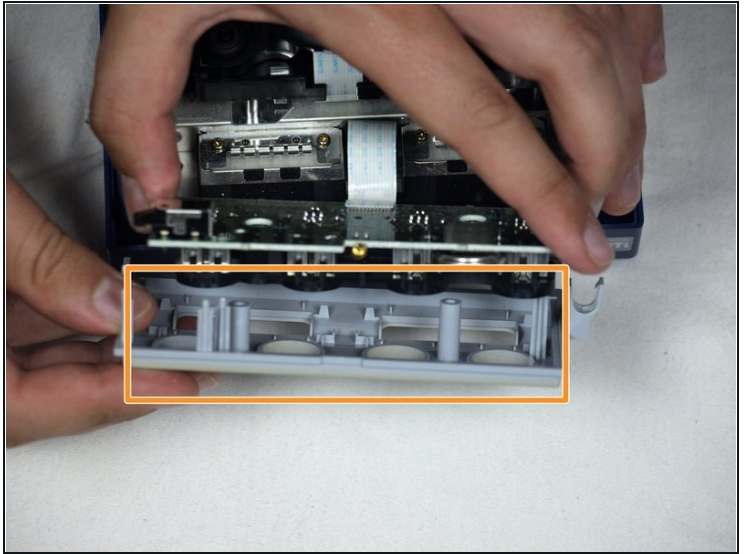
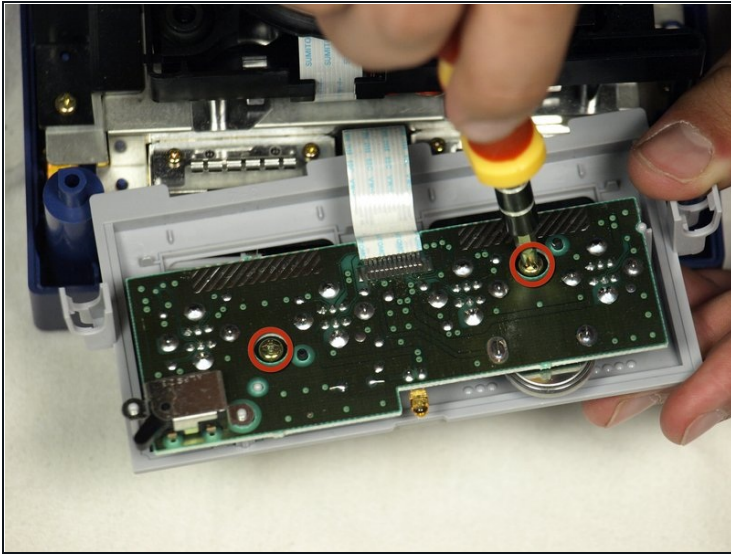
- Gently press down on the clips located on either side of the back panel.
- Carefully remove the back panel from the GameCube.

### Step 4



- Unclip the controller ports at the front of the unit.
  - ⚠ A ribbon cable (outlined in orange) is still attached to the unit. **Do not disconnect this cable.**
- ☑ Controller ports are where the controllers plug into the game console, and are a half circular shape.

## Step 5 — Separate the casing



- Use a Phillips #2 screwdriver to remove the two screws on the back of the control port.
- Carefully separate the gray outer casing of the control port and the circuit board.

---

To reassemble your device, follow these instructions in reverse order.