



Dell XPS 7590 SSD Replacement

Written By: Max Lembke





TOOLS:

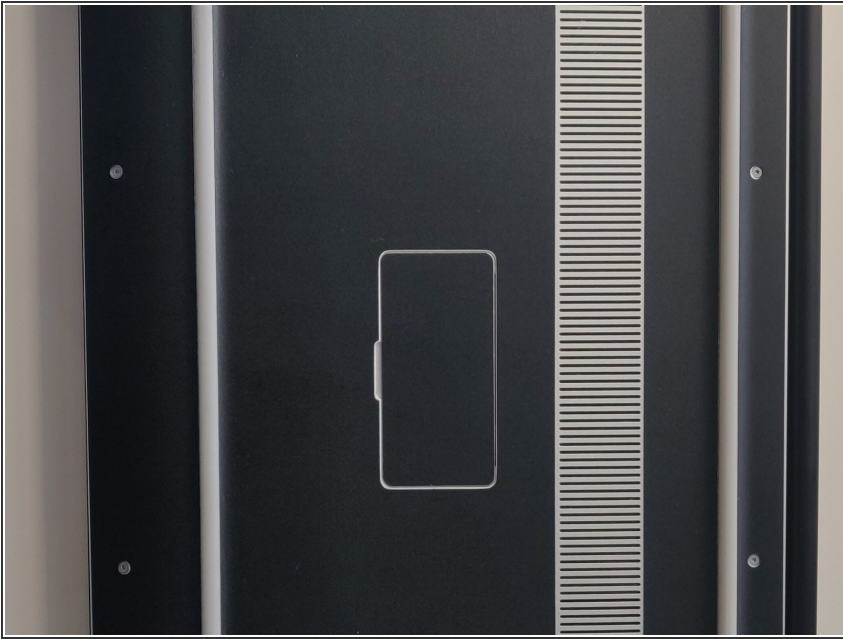
- [T5 Torx Screwdriver](#) (1)
- [Phillips #0 Screwdriver](#) (1)
- [iFixit Opening Tool](#) (1)



PARTS:

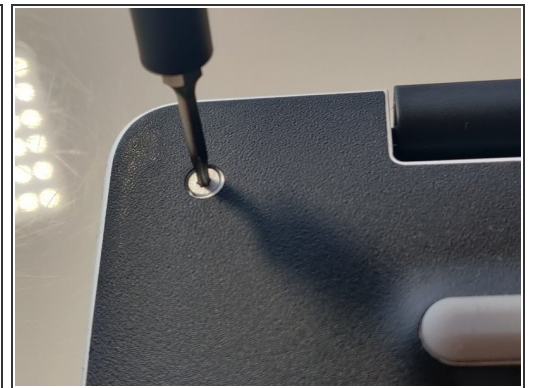
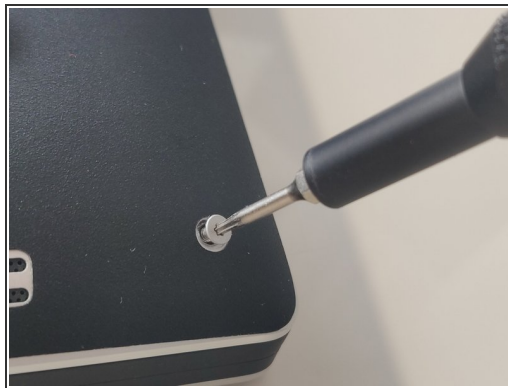
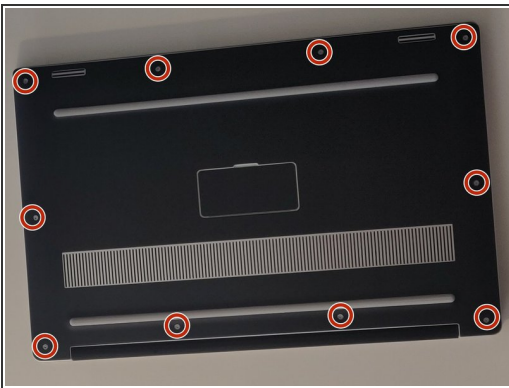
- [Crucial P3 NVMe PCIe M.2 2280SS SSD - solid performance, switching from HDD or SATA to NVMe™](#) (1)
- [Crucial P3 Plus NVMe PCIe M.2 2280SS SSD - fast Gen4 NVMe™ storage for data-intensive applications](#) (1)
- [Crucial P5 Plus NVMe PCIe M.2 2280SS SSD - professionals, creatives, and hardcore gamers](#) (1)

Step 1 — Flip laptop around



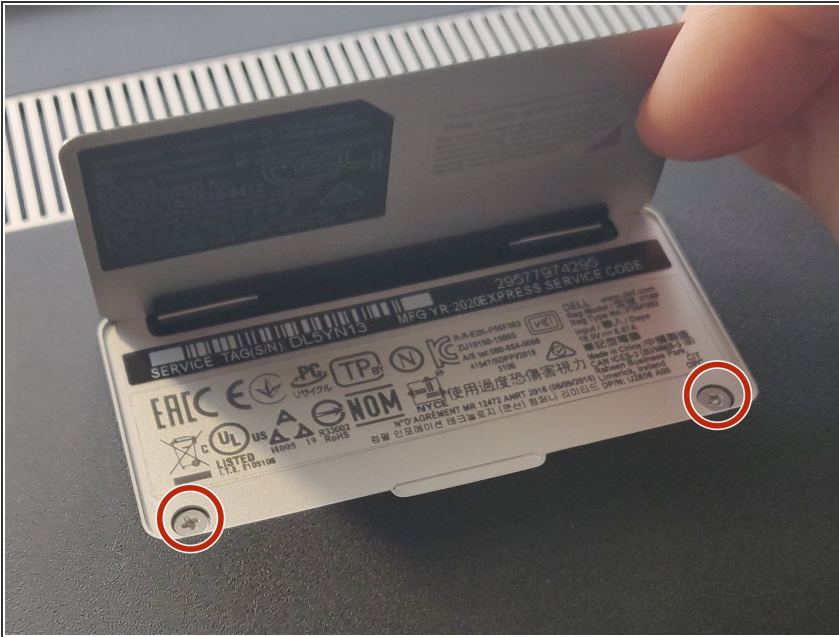
- Flip your device the other way around
- Don't be confused that this device is black, its a skin

Step 2 — Remove 10 Torx T5



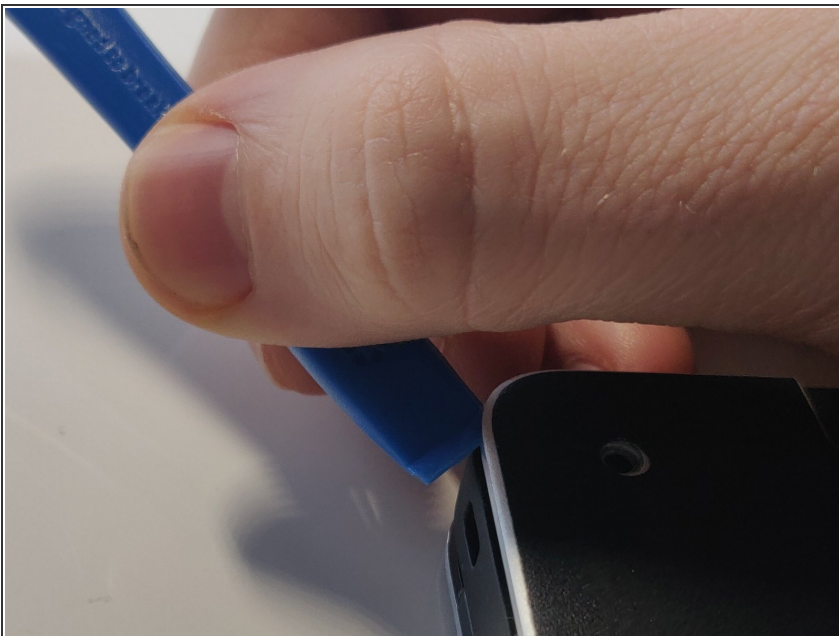
- Grab your T5 Torx and identify the 10 torx screws
- Make sure that this is a T5, to not strip the screws. They can be very difficult to remove
- Careful there are more screws, do not try to open yet!

Step 3 — Remove Flap Screws



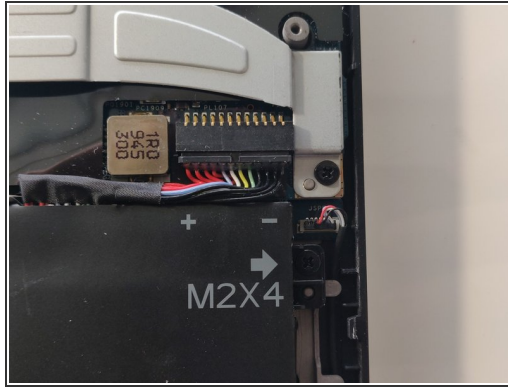
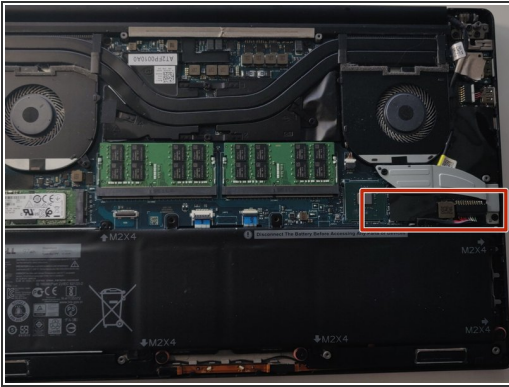
- Open the flap on the back of the laptop
- There are two screws that need to be removed, please use a Philips 0 screwdriver

Step 4 — Remove Backplate



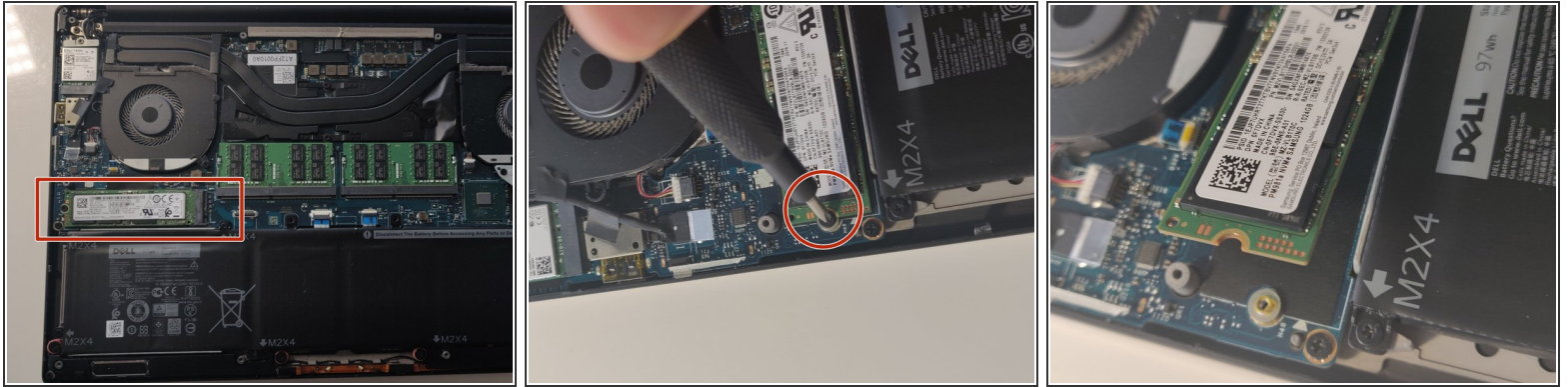
- The backplate might not be easy to open
- You can use a soft prytool to open the laptop easier
- Don't insert the tool too deep or you might break the mainboard
- Now, you should be able to remove the backplate

Step 5 — Unplug Battery



- Locate the battery connection to the mainboard
- Unplug the battery before doing anything else
- You can use a pry tool to make this easier

Step 6 — Locate and remove SDD



- Locate the SSD on the mainboard
- Use a Philips 0 to remove the screw of the SSD
- Slide the SSD out of its socket.
- Try not to lift the SSD any more than necessary
- During reassembly, make sure the slot in the SSD lines up with the slot in its socket. Do not touch the gold-colored contacts with your fingers.
- Reconnect the battery and reassemble

To reassemble your device, follow these instructions in reverse order.