



# Genesis II CSS-315 Ignitor Replacement

Written By: Carlos Castro Paguaga





## TOOLS:

- [Phillips #3 Screwdriver](#) (1)
-

## Step 1 — Ignitor



**⚠** Be sure the grill is turned off before beginning this guide.

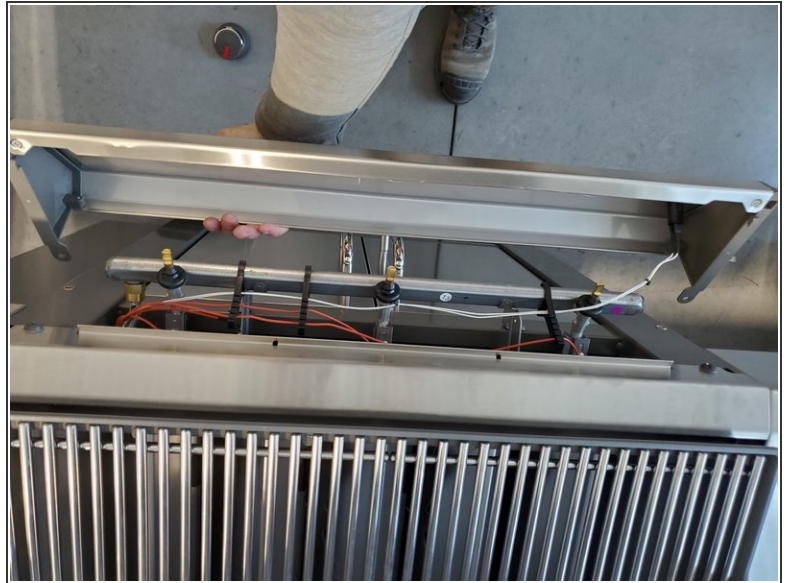
- Remove all of the control knobs.
- i** The amount of knobs may vary depending on the grill.

## Step 2



- Remove the two 19 mm screws below the control knob panel using a Phillips #3 screwdriver.

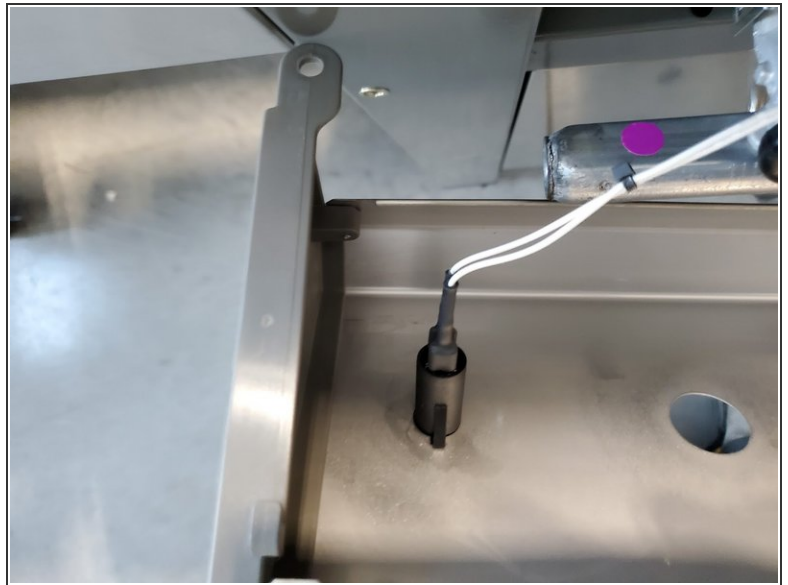
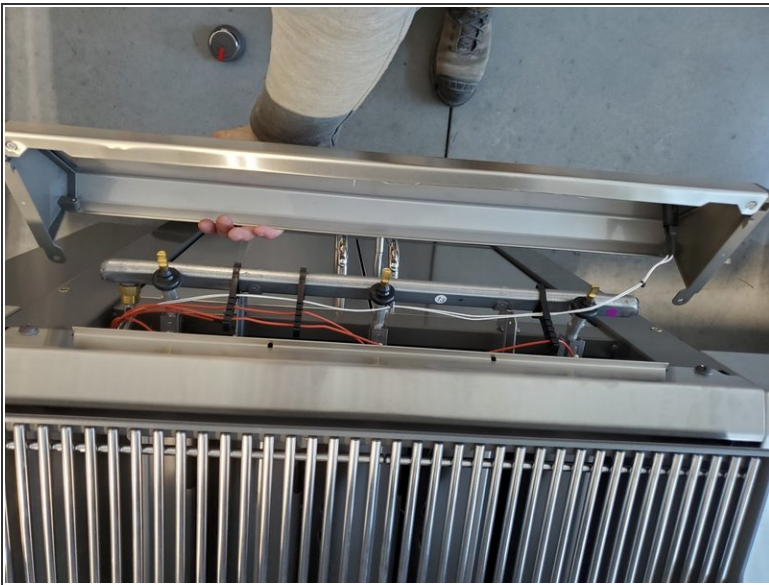
## Step 3



- Push up on the front panel, and pull it up above the grill.

**⚠ Potential for device damage:** The ignitor is connected to the front panel, so do not pull too hard.

## Step 4



- Disconnect the cables from the ignitor.



## Step 5



- Pinch the two ends of the ignitor and remove the ignitor from the front panel.

## Step 6



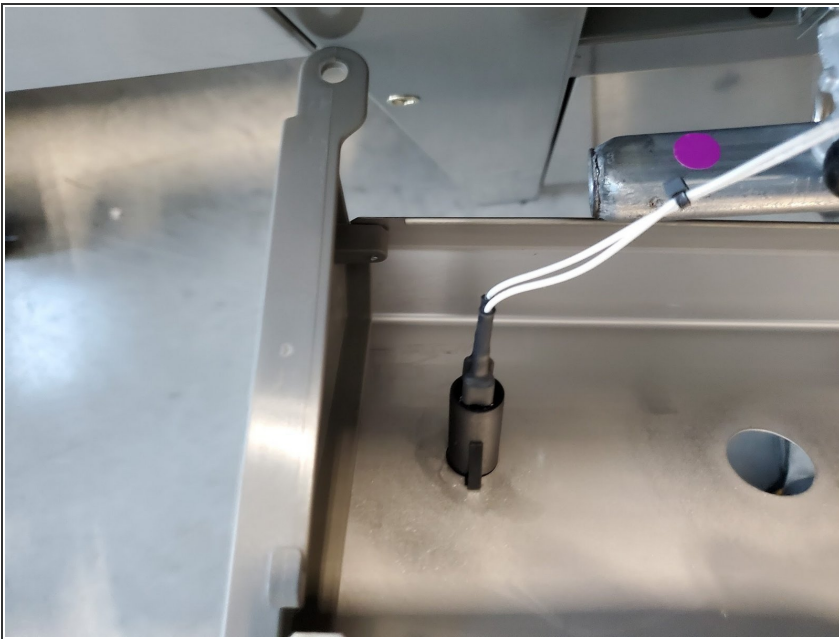
- ① Have the new ignitor on hand, and make sure that the clips on the side are in good condition.
- ① Ensure that the pins at the end are straight and not bent.

## Step 7



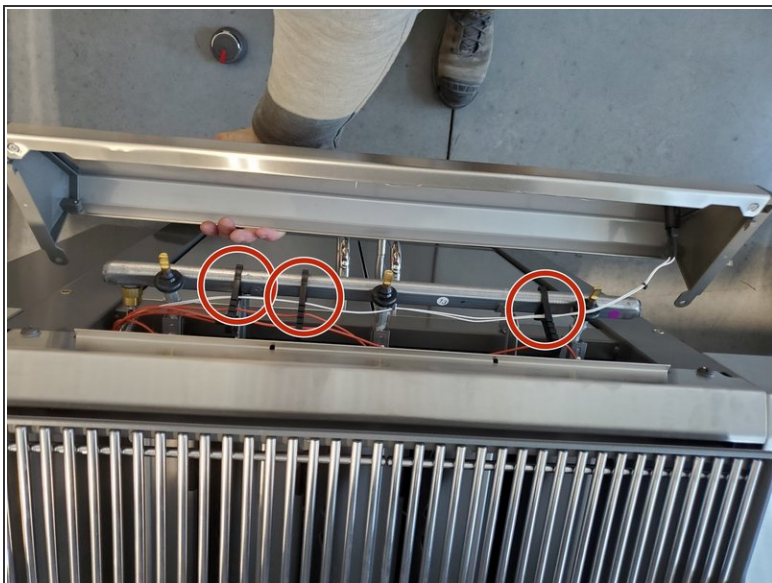
- Put the new ignitor into the socket.
- Press down evenly until it is secure.

## Step 8



- Connect the white cables to the ignitor.

## Step 9



- Make sure any and all cables are separated from the fire box (the bottom of the grill).
- Slot the panel back on the grill and then push downward.
- ⓘ The fire box is the part of the grill that gets really hot, and this can damage the cables.

## Step 10



- Make sure the holes match and reinsert the screws from Step 2 using a Phillips #3 screwdriver.
- ⓘ If the holes do not match up, you may have to gently push or pull the front plastic panel.

## Step 11



- Add the control knobs, and slot them into place.