



Lenovo 100e Chromebook 2nd Gen Keyboard Replacement

In order to get to the back interface of the...

Written By: Pup Washington



INTRODUCTION

In order to get to the back interface of the Lenovo 100e Chromebook 2nd gen to do further detailed repairs, it is important to know how to take the keyboard of the laptop. For this guide, you will need a plastic opening tool and a Philips head screwdriver.

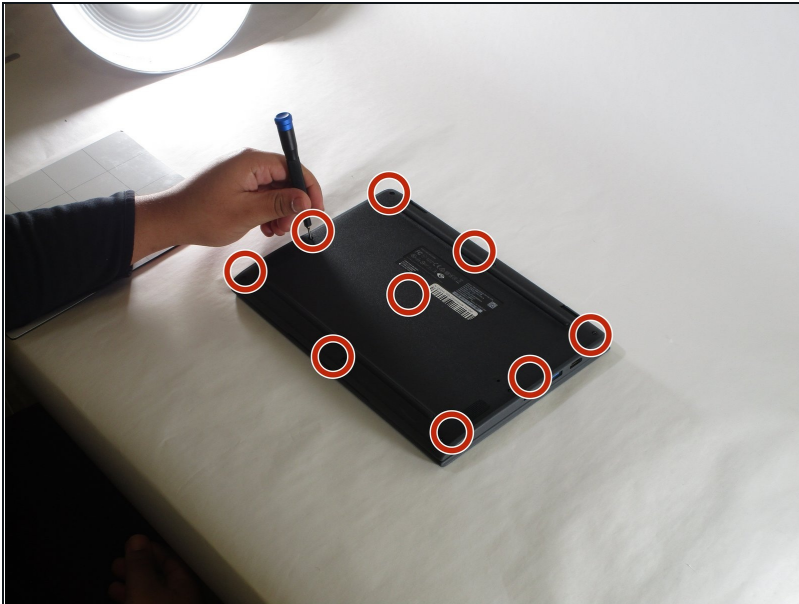
TOOLS:

[Phillips #0 Screwdriver](#) (1)
[iFixit Opening Tool](#) (1)
[1 x Opening Picks](#) (1)

PARTS:

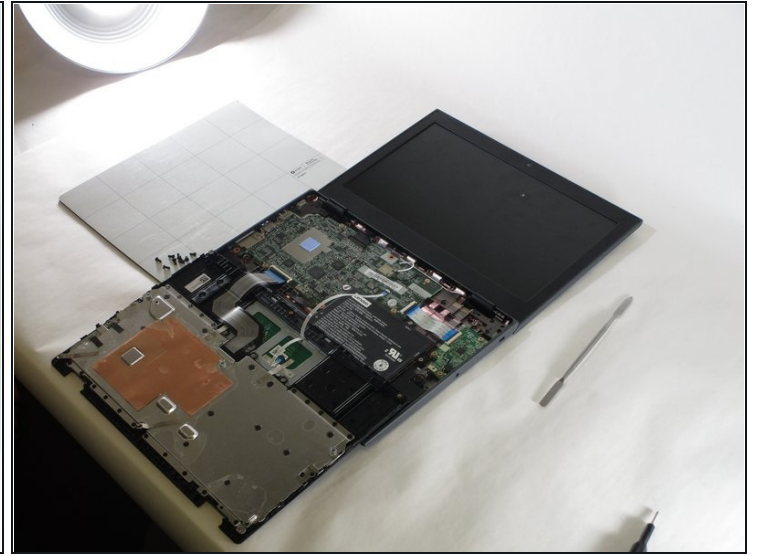
[5CB0X55485 - Lenovo Laptop Palmrest Keyboard - Genuine](#) (1)

Step 1 — Keyboard



- Remove the nine 6 mm screws from the back of the laptop using a Phillips #0 screwdriver.

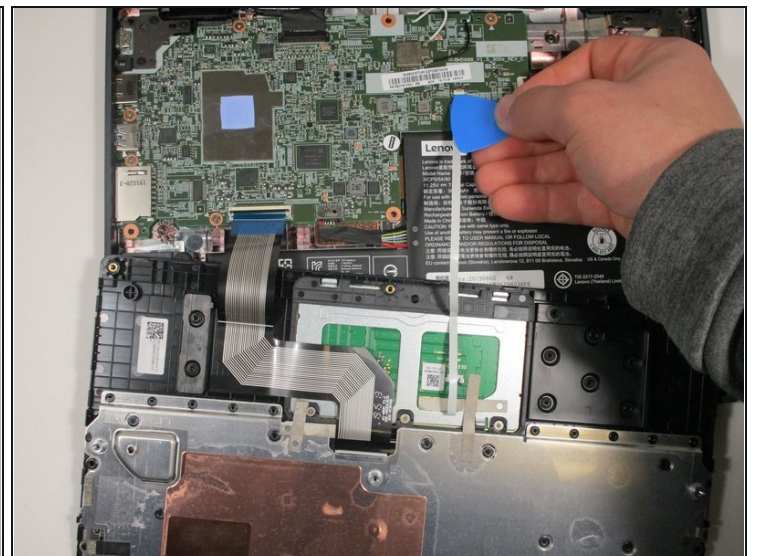
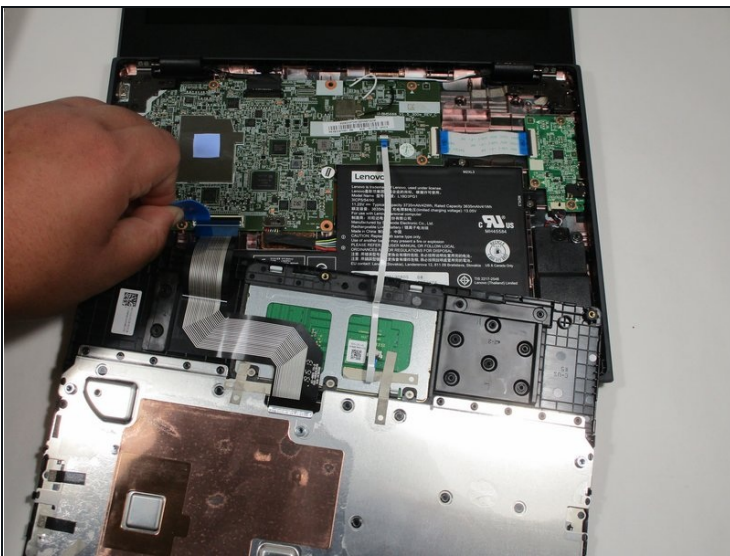
Step 2



- Open the laptop and lay it flat.
- Go along the edge of the keyboard with an opening tool until it pops loose.

⚠ Potential for device damage: Make sure that the keyboard does not fall away from the laptop, as it is still connected to the internal components

Step 3



- Lift the keyboard connectors up using an opening pick.
- Remove the connectors from their sockets.

To reassemble your device, follow these instructions in reverse order.