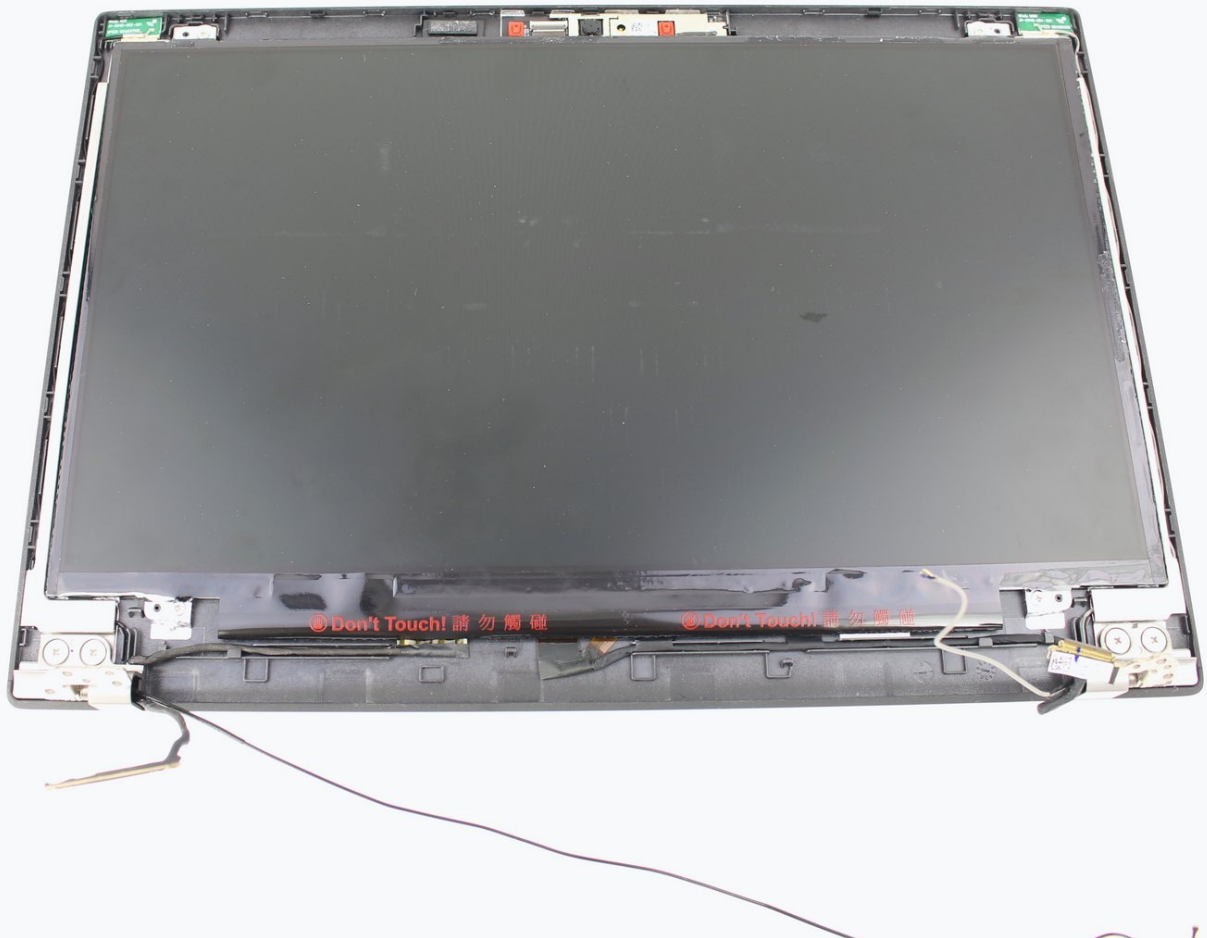




# Lenovo ThinkPad T480 LCD Bezel Replacement

If the bezel of your Lenovo ThinkPad T480 needs...

Written By: Sarah Westberg



# INTRODUCTION

If the bezel of your Lenovo ThinkPad T480 needs to be replaced, follow this guide. The bezel is sturdy but it is plastic and could be damaged either intentionally or otherwise.

The bezel of the screen covers the edge of the LCD screen along with some screws, wires and the camera assembly.

Prior to beginning this repair, be sure to [disable the internal battery](#), turn off the laptop and unplug it from any external power source.

---

## TOOLS:

iFixit Opening Tool (1)  
Phillips #1 Screwdriver (1)  
Spudger (1)  
Metal Spudger (1)

## PARTS:

01YR493 - Lenovo Laptop LCD Front Bezel - Genuine (1)  
01YR488 - Lenovo Laptop LCD Front Bezel - Genuine (1)

---

## Step 1 — External Battery



 [Disable the battery](#), power down, and unplug your device before you begin.

- Flip the laptop over so the bottom of the device is showing.

## Step 2



- Using your fingers, slide the lock on each side of the battery to the unlocked position.
- Remove the battery from the slot.

## Step 3 — Keyboard



- Use the Phillips #1 screwdriver to loosen the two screws parallel to the battery compartment.

## Step 4



- Open the laptop so the keyboard is facing you.

## Step 5



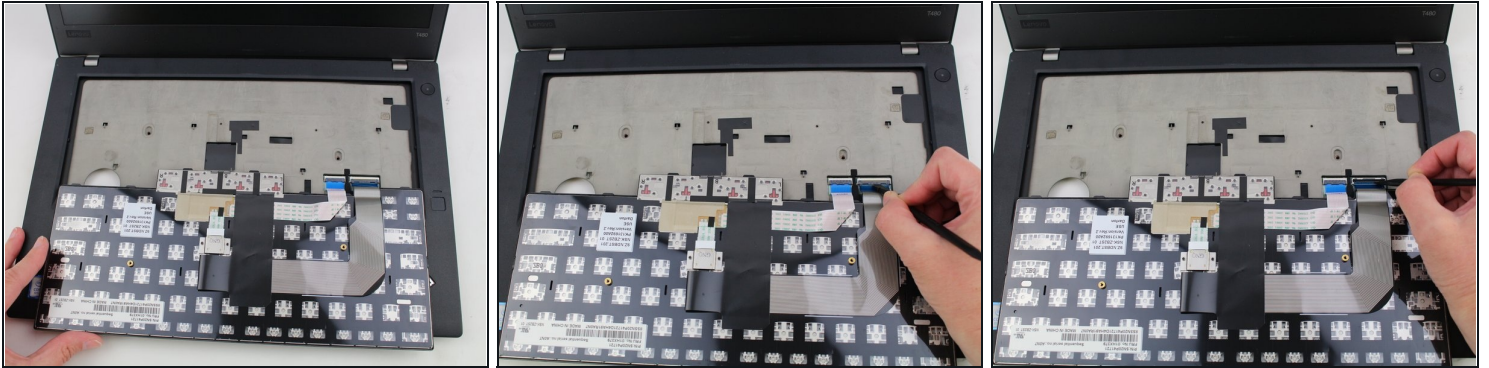
- Push the keyboard towards the screen and away from the trackpad and then slide it out towards you gently.

ⓘ The keyboard is connected to the board by two ribbon connectors.

⚠ Be careful not to rip the connectors when you flip the keyboard over.

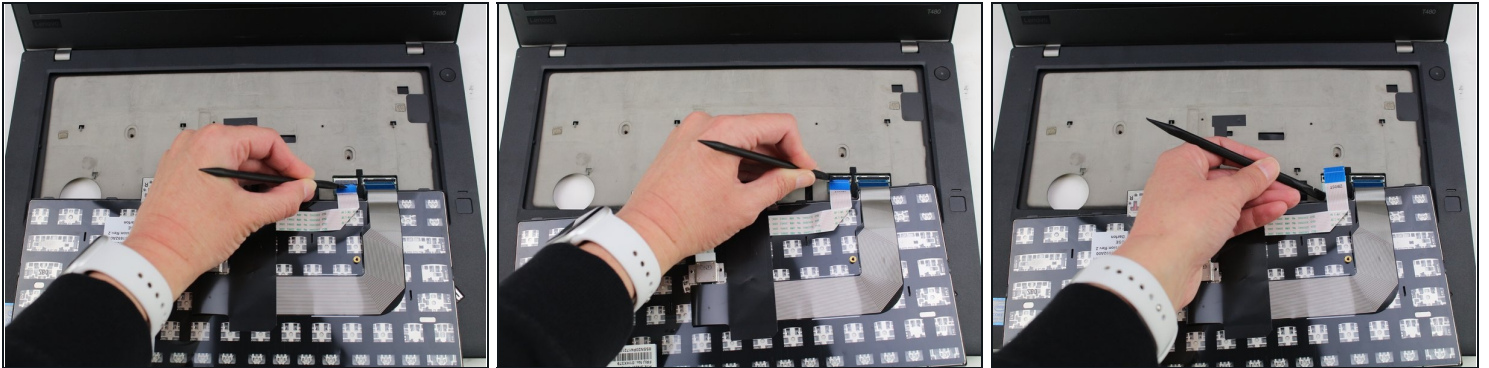


## Step 6



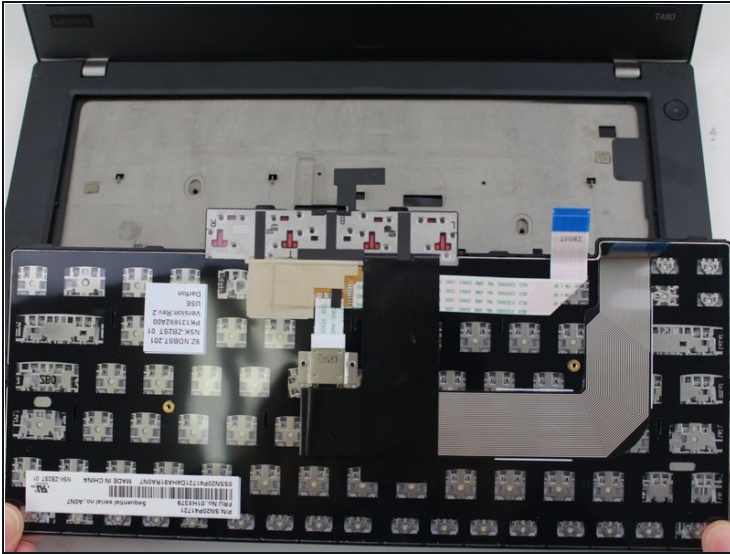
- Flip the keyboard over towards you to expose the backside of the keyboard and the two ribbon connectors.
- Using the black nylon spudger, flip the first ribbon connector lock open. Slide the first connector out.

## Step 7



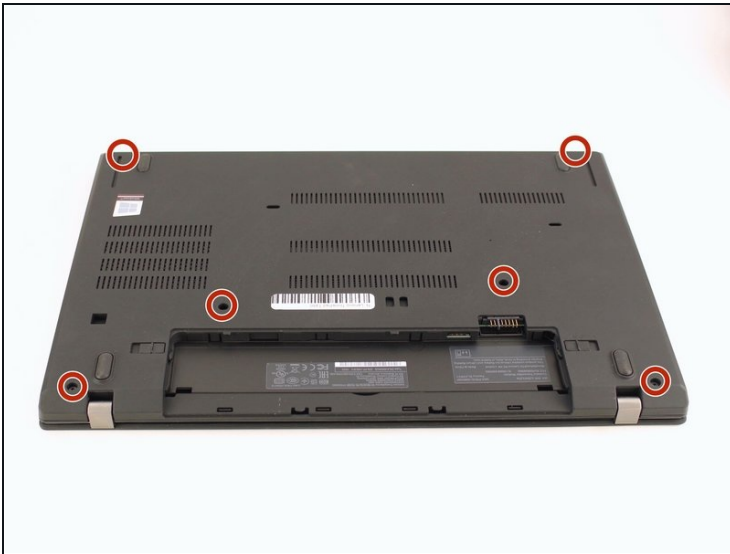
- Using the black nylon spudger, unlock the second ribbon connector and slide it out from the port.

## Step 8



- Remove the keyboard from the laptop.

## Step 9 — Back Cover



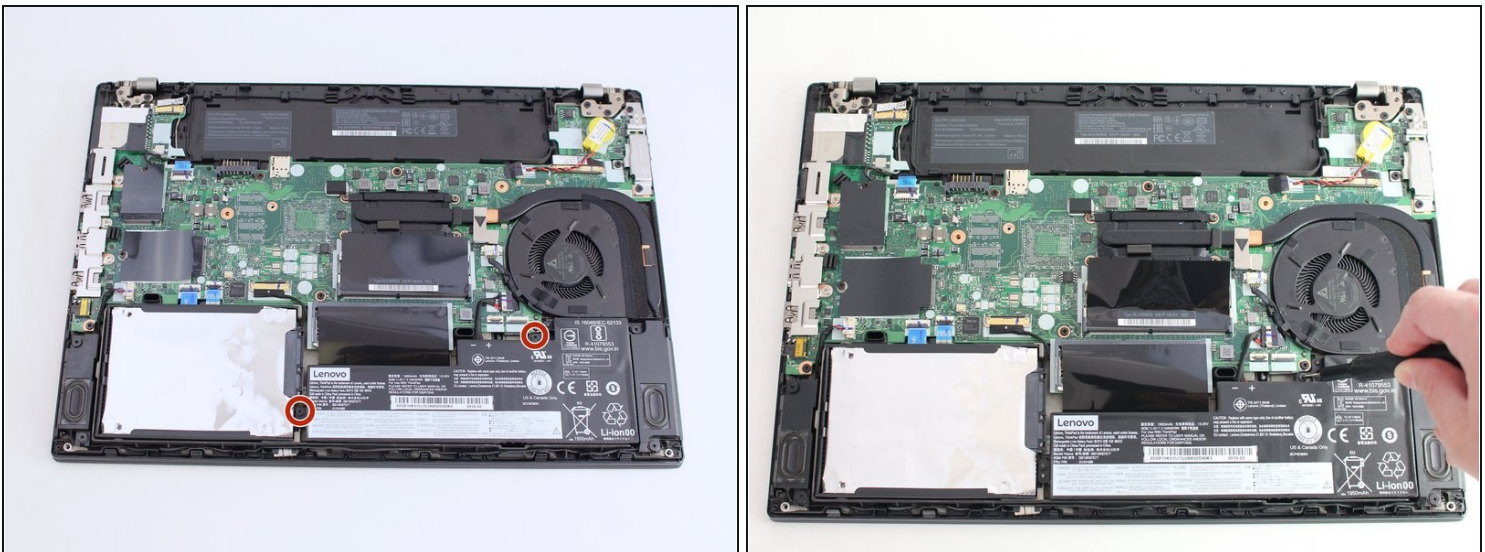
- Using the Phillips #1 screwdriver, loosen the six captive screws.

## Step 10



- Insert the blue plastic opening tool into the space between the lower case and the chassis.
- Slide the opening tool around the perimeter of the case to release the clips holding the case and the chassis together.
- ❗ If it feels like the battery well portion of the back cover isn't loose, these clips may be holding the cover to the laptop. Use your opening tool to pry the clips loose and try removing the cover again.
- Remove the back case.

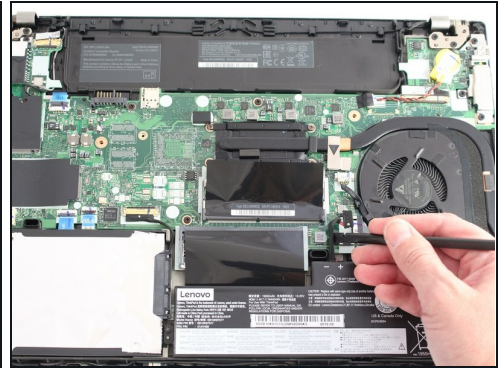
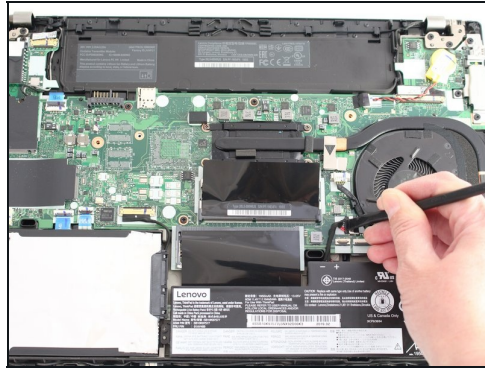
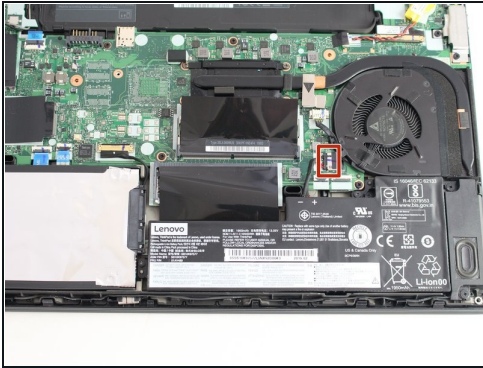
## Step 11 — Internal Battery



- Using the Phillips #1 screwdriver, remove the two 4.6 mm screws securing the internal battery to the frame.

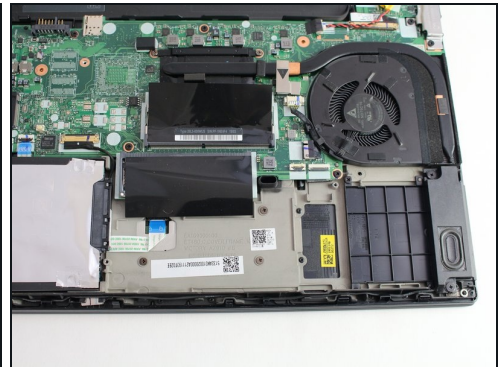
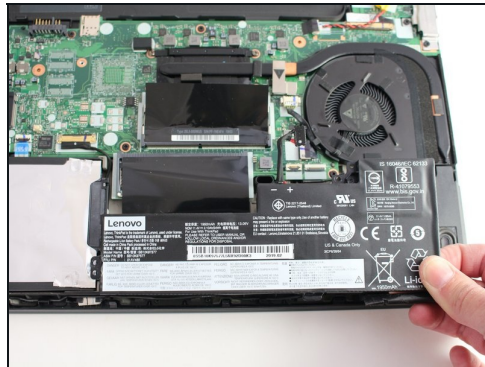
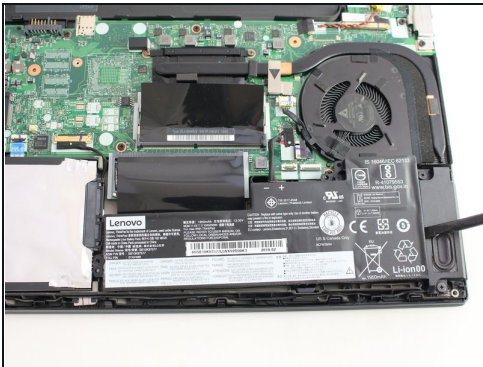


## Step 12



- Use the spudger to slide the battery socket connector parallel to the motherboard and out of its socket on the motherboard.

## Step 13



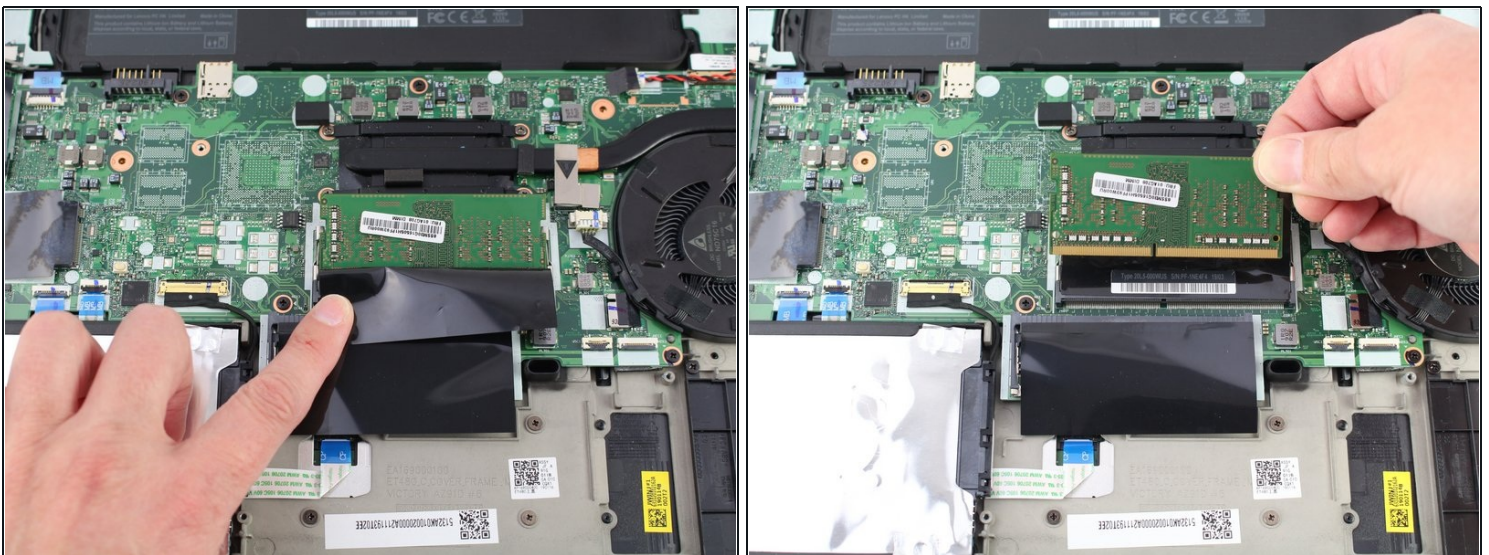
- Using the black nylon spudger, wedge the battery up from the case and lift it out.

## Step 14 — RAM



- Pull the black plastic sheet back to reveal the RAM stick.
  - Using your fingers, pull the metal arms (located on both sides of the RAM stick) slightly away from it .
  - ⓘ The RAM will pop up by a few millimeters.
- ⚠ Remove it at an angle and not straight up so you don't damage the socket.

## Step 15



- Slide the RAM stick out from the memory module slot.
- ⓘ Repeat for the RAM stick located below. This computer did not have RAM in the slot below however.

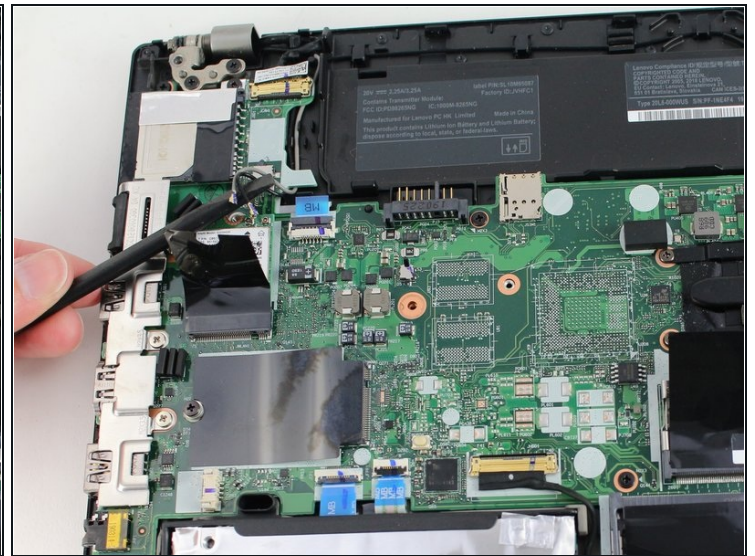


## Step 16 — Wi-Fi Card



- Using the Phillips #1 screwdriver, remove the single 3.6 mm screw at the top of the Wi-Fi card attaching it to the motherboard.

## Step 17

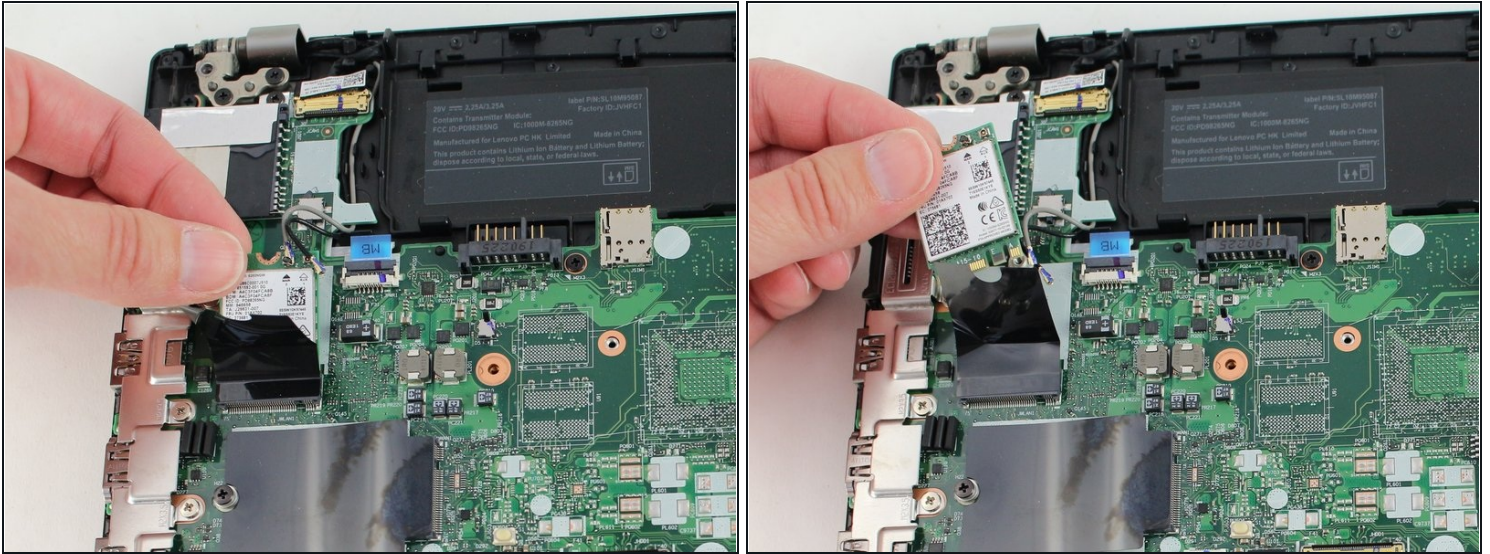


- Insert the point of a spudger under one of the antenna cables close to the connector. Pry straight up to disconnect the cable off of the Wi-Fi card.

⚠ Be careful as you pry the cables off of the Wi-Fi card as they are fragile and easily damaged.

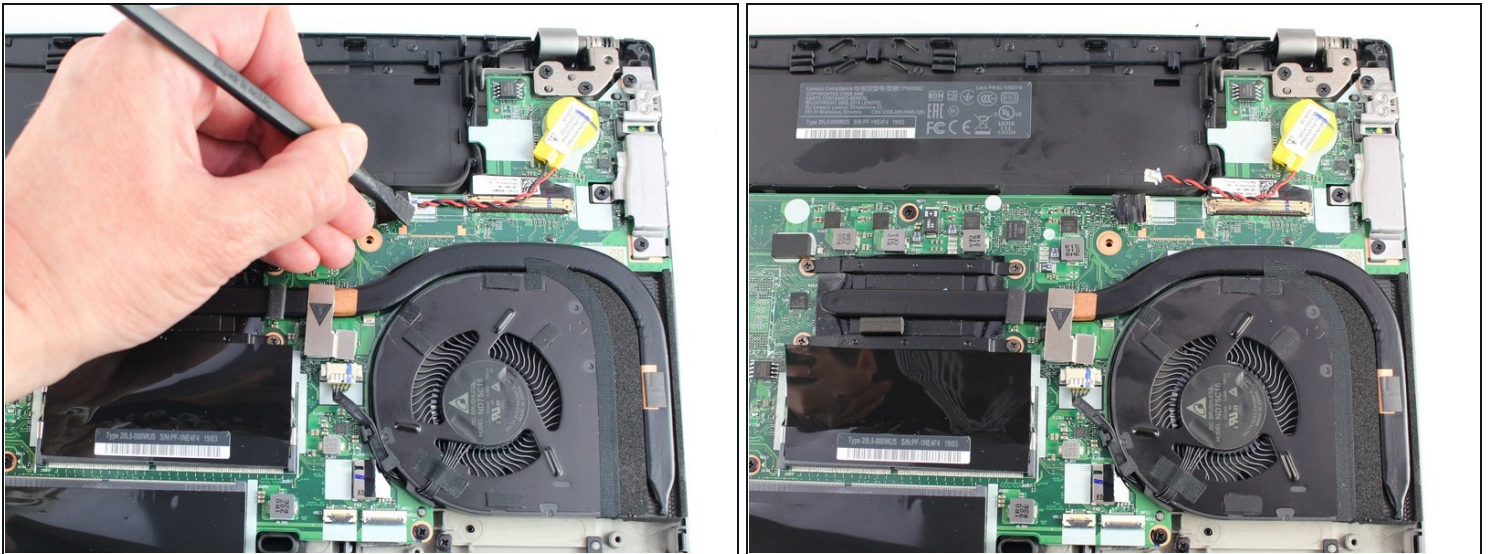


## Step 18



- Slide the Wi-Fi card out from the slot to remove it from the board.

## Step 19 — CMOS Battery

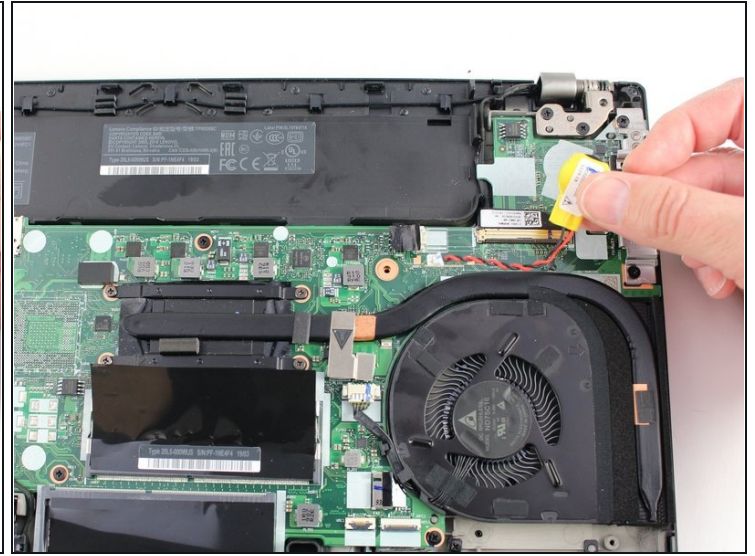
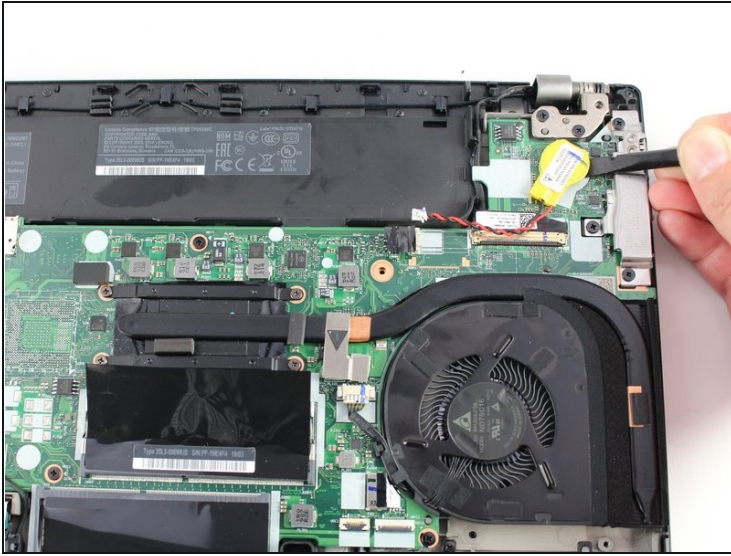


- Using an IC extractor or black nylon spudger, unplug the connector from the socket on the motherboard.

⚠ This connector may be very difficult to remove and is easily damaged. Be careful that you don't damage the port when removing the coin cell battery connector.

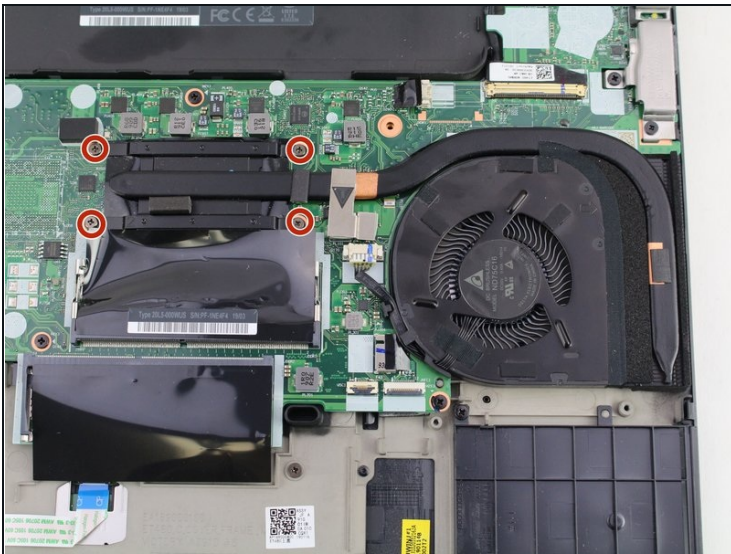


## Step 20



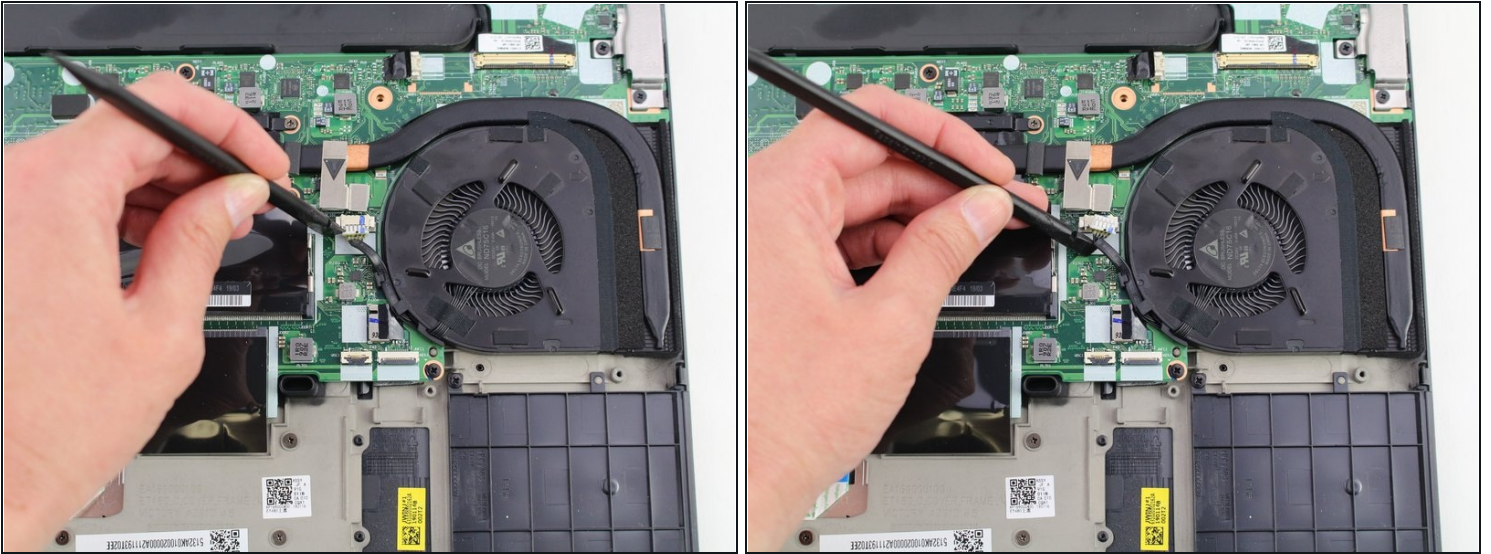
- Using the black nylon spudger, pry the coin cell battery off of the motherboard.
- ① The coin cell battery is stuck to the board with a light adhesive.

## Step 21 — Fan Assembly/Heatsink



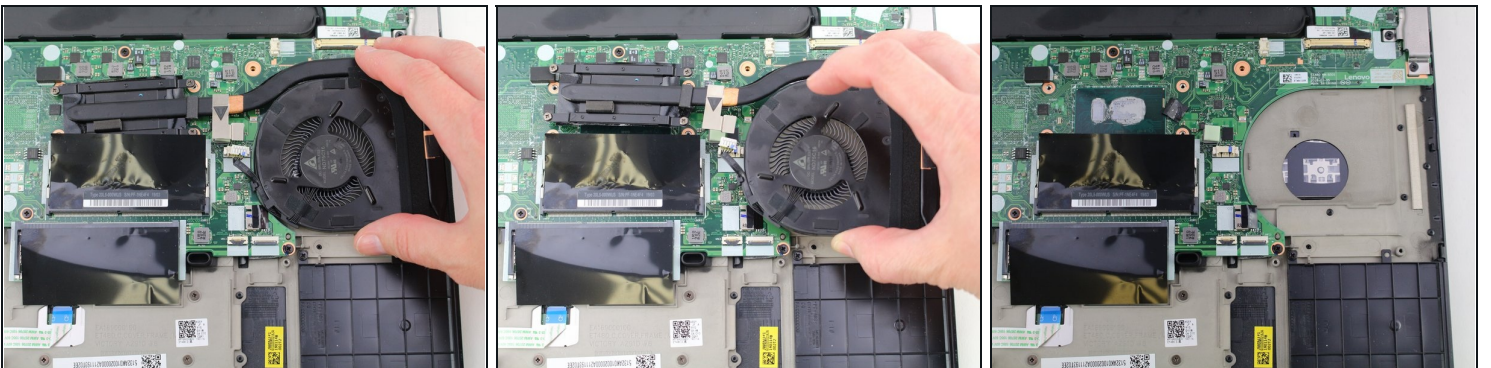
- Using the Phillips #1 screwdriver, loosen the four captive screws in the arm of the heatsink.

## Step 22



- Use the black nylon spudger to slide the fan connector parallel to the motherboard and out of its socket on the motherboard.

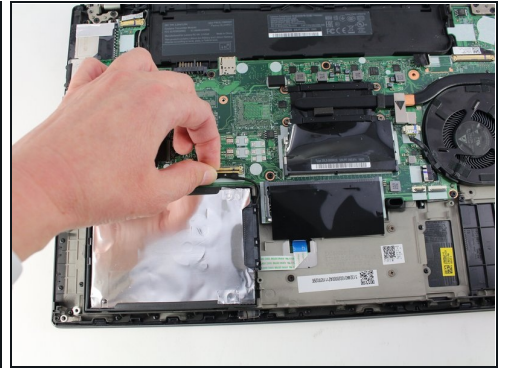
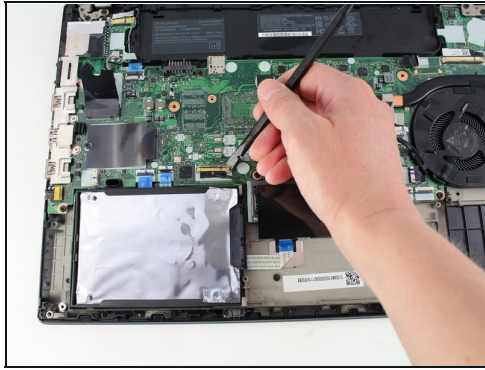
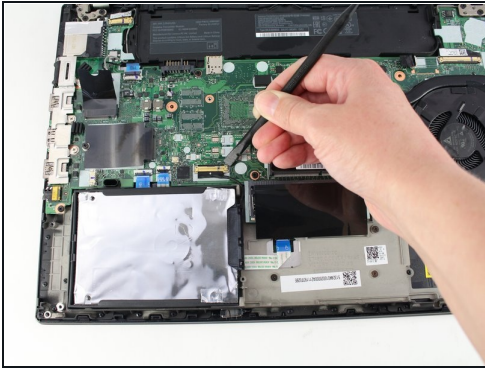
## Step 23



- Lift the fan assembly off of the board.
- ☒ Prior to replacing your fan assembly, remember to [apply thermal paste](#).

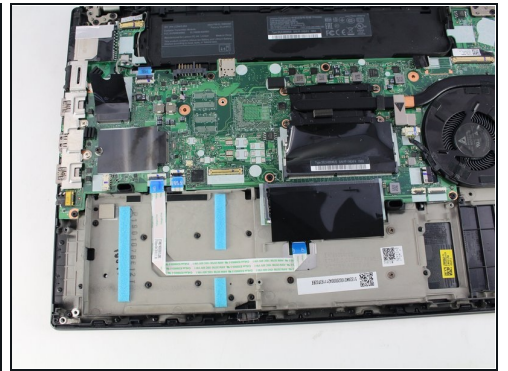


## Step 24 — Hard Drive



- Using the black nylon spudger, lift the connector lock up.
- Disconnect the storage cable from the system board.

## Step 25



- Lift the hard drive up with a tab if it has one or with your spudger.
- Lift the drive assembly from the system.

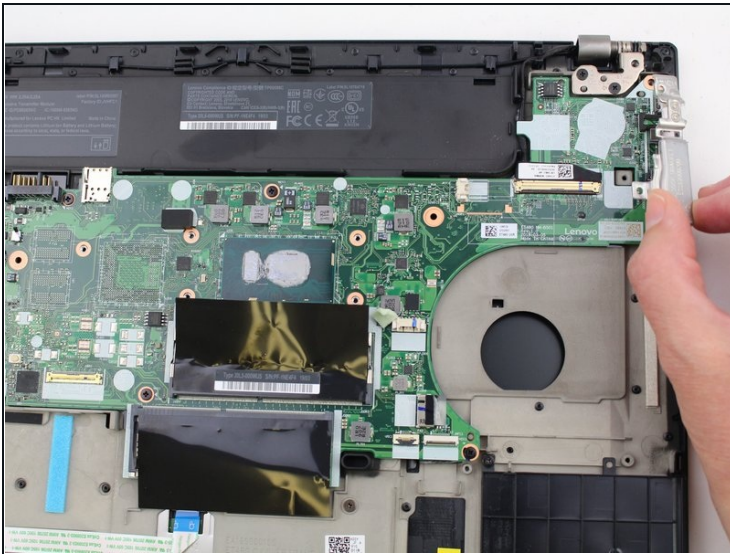


## Step 26 — Motherboard



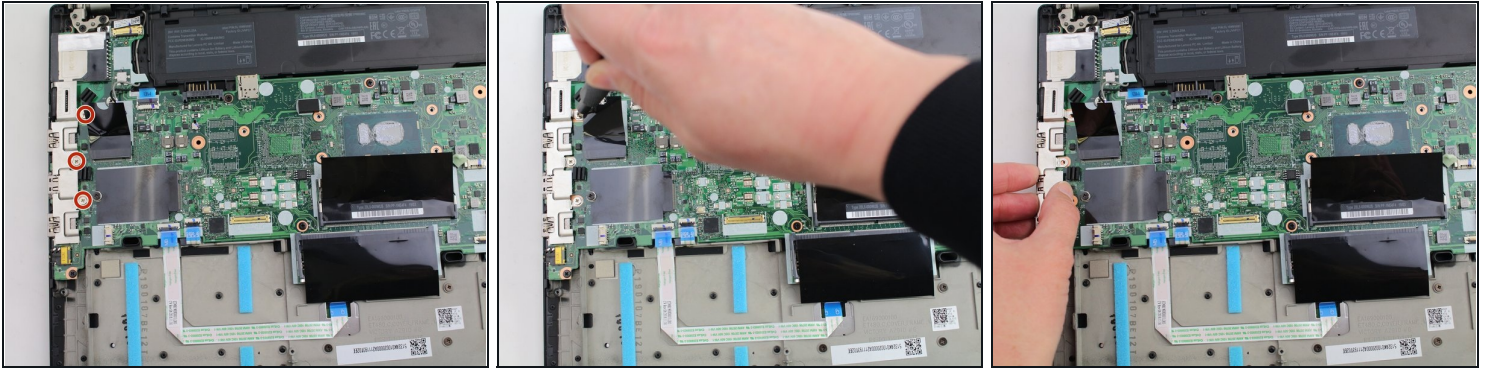
- Using the Phillips #1 screwdriver, remove three 4.6 mm screws from the I/O bracket.

## Step 27



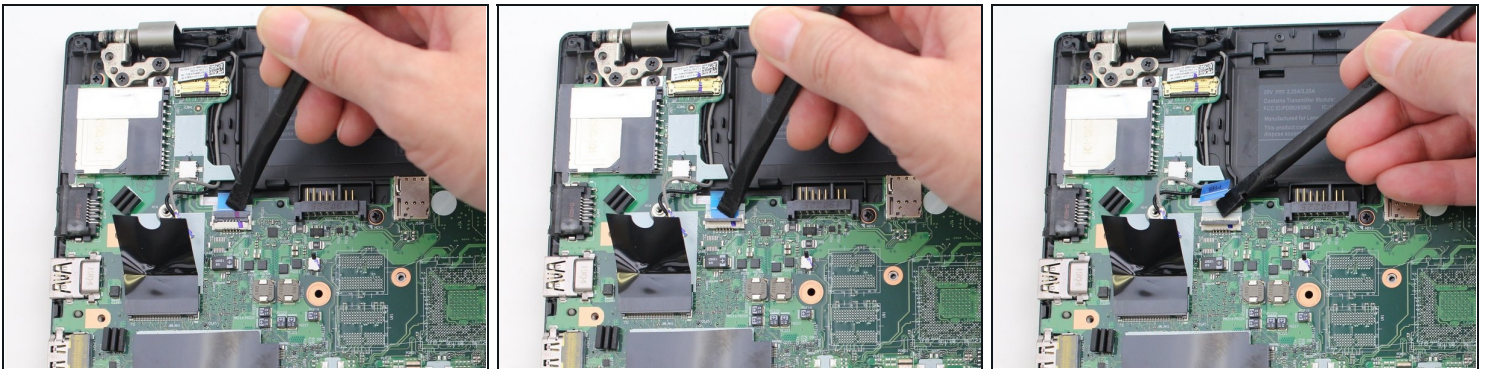
- Lift the I/O bracket off the motherboard.

## Step 28



- Using the Phillips #1 screwdriver, remove the three 4.1 mm screws from the RJ45 bracket.
- Lift the bracket off of the motherboard.

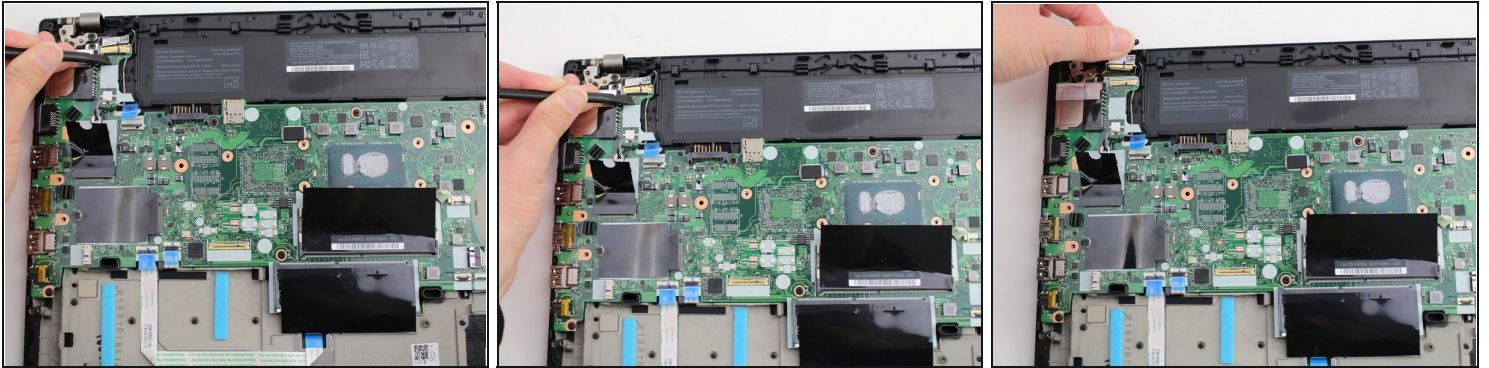
## Step 29



- Use the black nylon spudger to lift up the small locking flap on the power button cable's [ZIF connector](#).
- Slide the power button cable out of the ZIF connector.

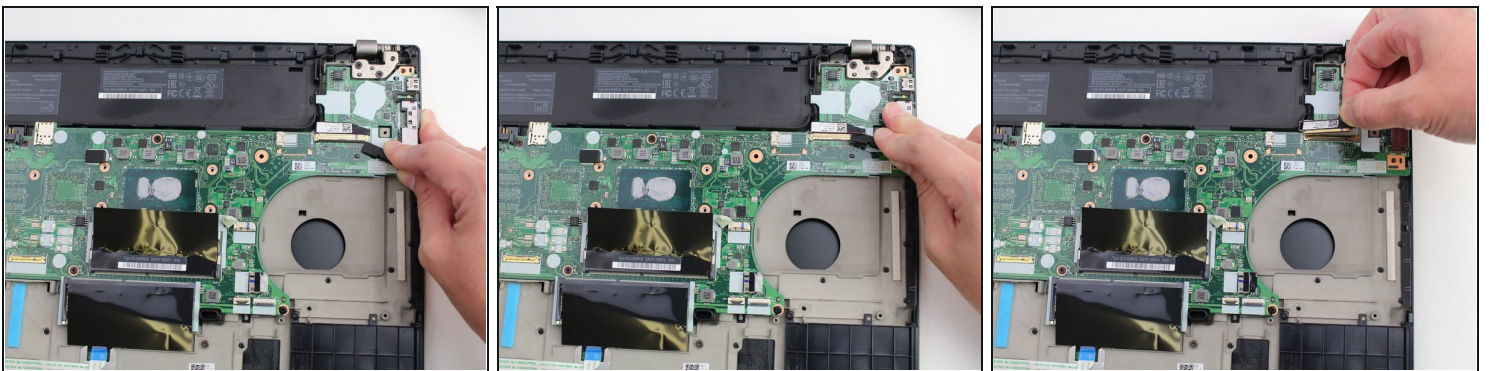


## Step 30



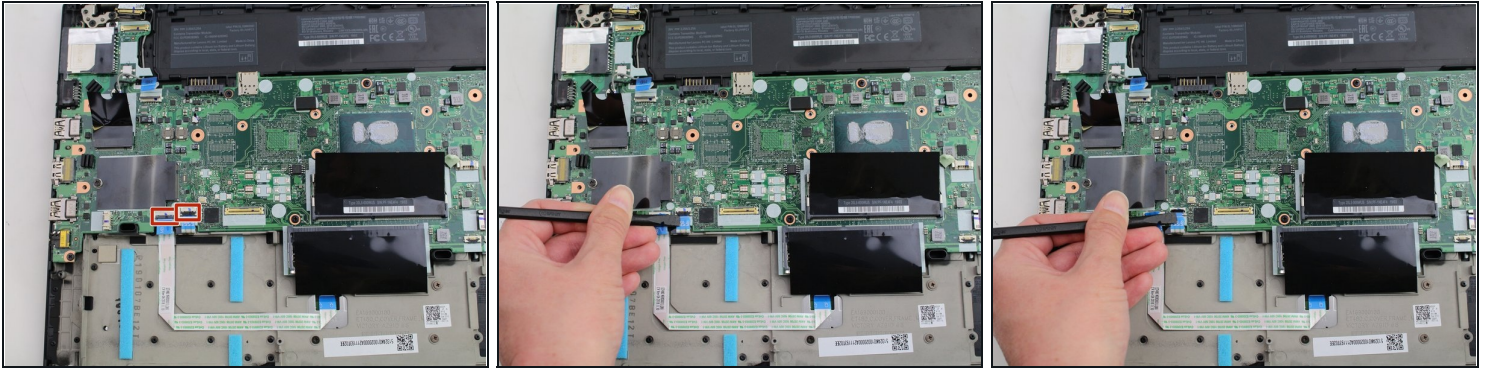
- Using the black nylon spudger, disconnect the LCD cable from the motherboard.

## Step 31



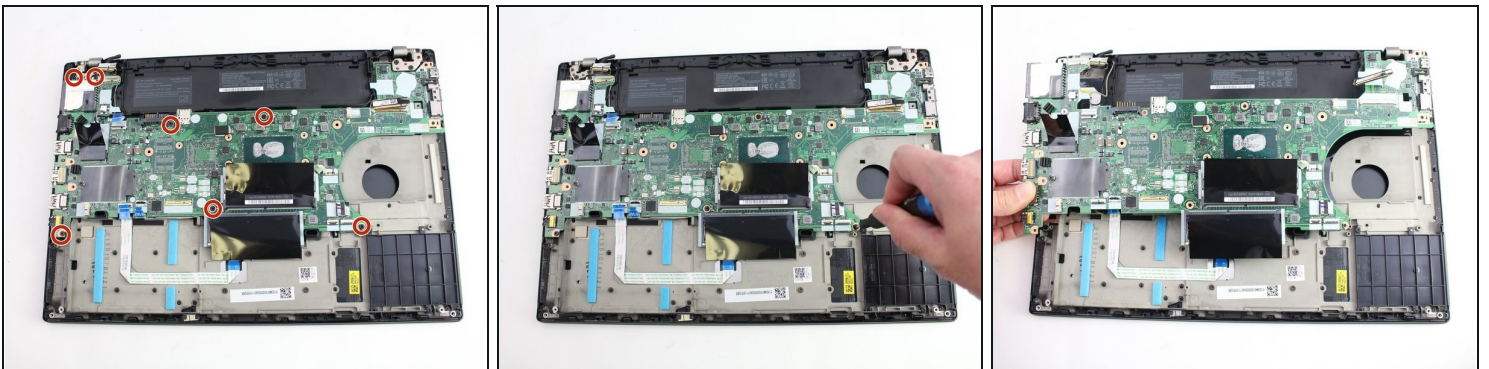
- Use the tip of a spudger or an opening tool, to flip up the small, hinged locking flap on the camera cable connector to remove the cable from the motherboard.

## Step 32



- Using the black nylon spudger, remove the NFC cable connector and trackpad connector from the motherboard.

## Step 33



- Using the Phillips #1 screwdriver, remove seven 3.6 mm screws from the motherboard.
- Lift the motherboard off of the case to remove it.

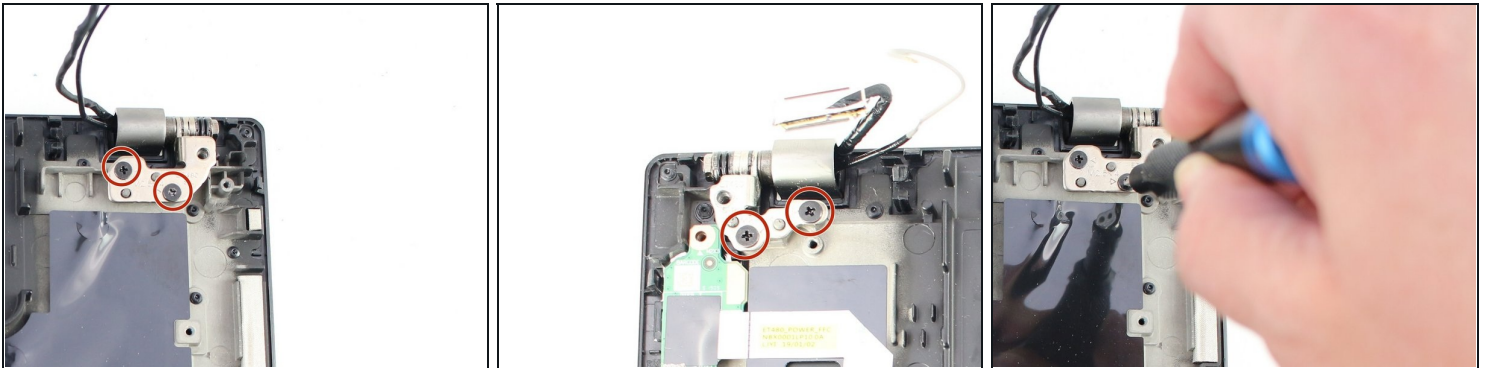


## Step 34 — LCD Assembly



- Remove the cables from the cable guides.

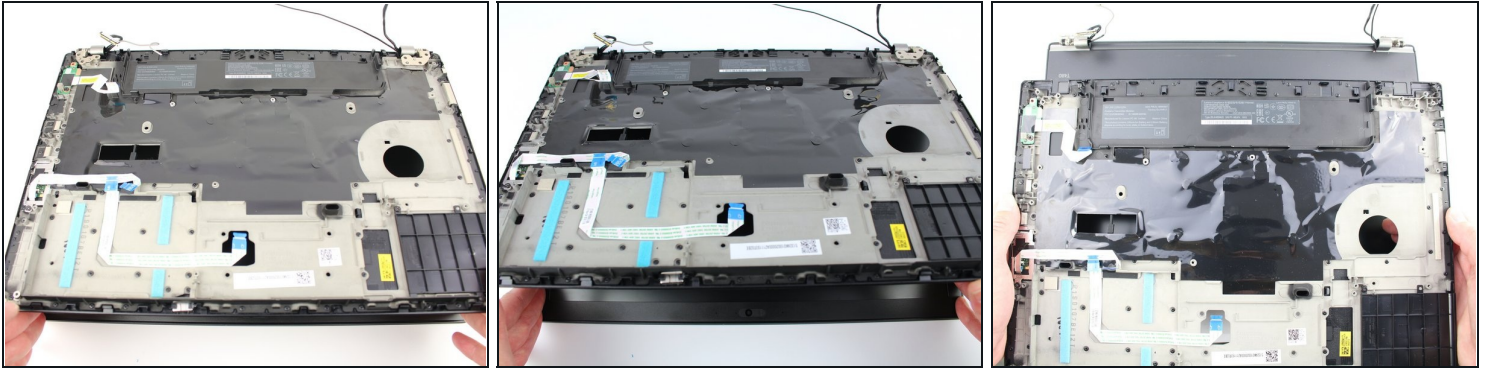
## Step 35



- Using the Phillips #1 screwdriver, remove two 4.3 mm screws from each hinge (four total).



## Step 36



- Lift the keyboard bezel up and slide it out from the hinges to separate it from the LCD assembly.
- ⓘ In this image, all of the internal components were removed prior to this step so your device will look somewhat different.

## Step 37 — LCD Bezel



- Use the metal spudger to create a space between the bezel and lid and carefully undo the clips around the perimeter of the bezel.

## Step 38



- Finish removing the bezel from the screen using the metal spudger and your hands.
- ① The bottom edge of the bezel is not connected with clips but with adhesive. Take care as you remove it so you don't bend or break the bezel.

---

**To reassemble your device, follow the above steps in reverse order.**

Take your e-waste to an [R2 or e-Stewards certified recycler](#).

Repair didn't go as planned? Try some [basic troubleshooting](#), or ask our Answers community for help.