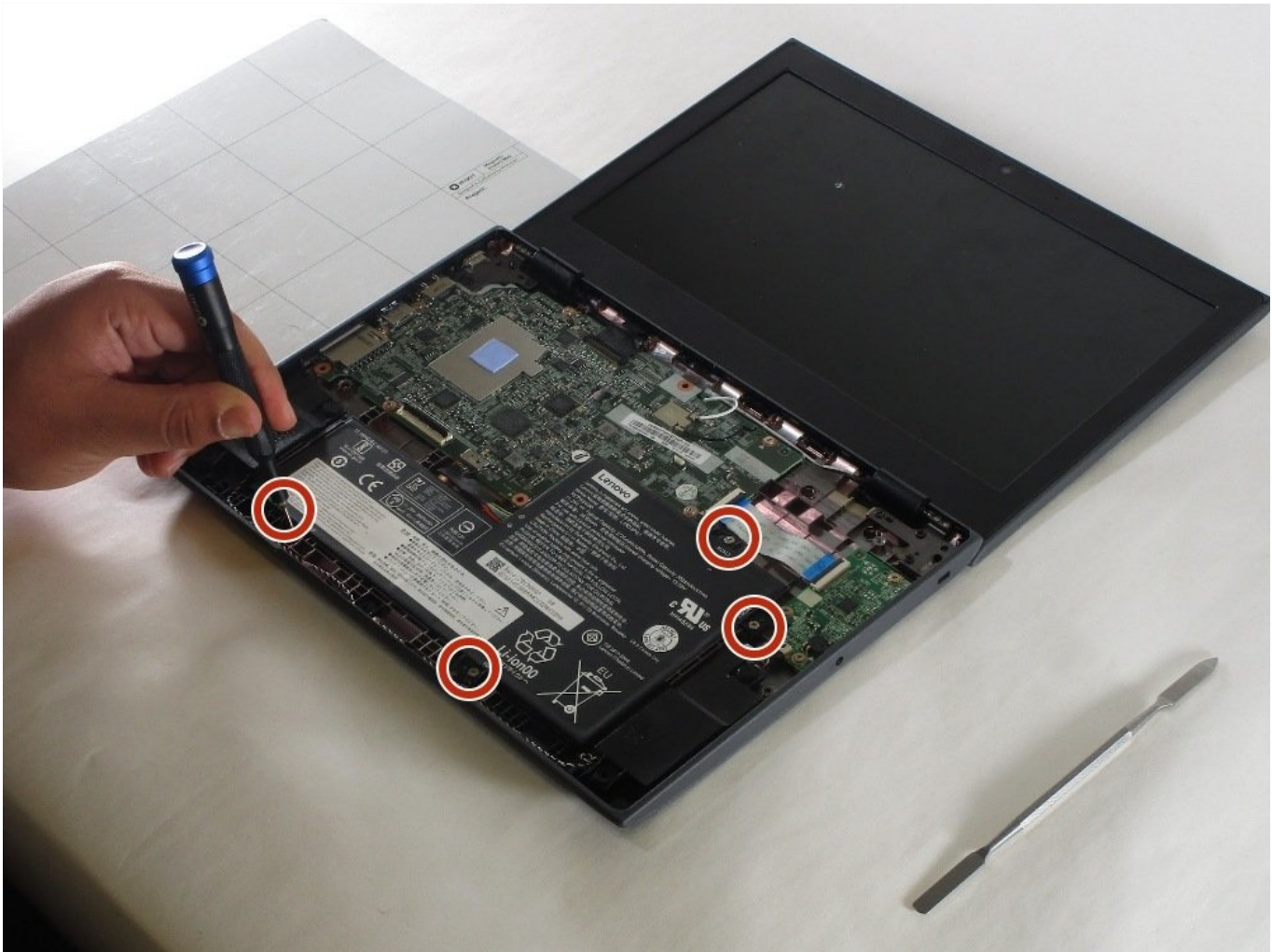




# Lenovo 100e Chromebook 2nd Gen Battery Replacement

This guide will show the steps needed to take o...

Written By: Pup Washington



# INTRODUCTION

This guide will show the steps needed to take out and replace the battery in the Lenovo Chromebook 100e 2nd gen. The battery gives the Chromebook power and is a necessity to a computer as it allows the computer to run properly. Batteries in any device can get worn out, degrade, and eventually stop working over time. This is why the replacement of a battery is very important to keep your device running for longer periods and in good condition. If your Lenovo Chromebook seems to be losing battery quickly or doesn't feel like it's getting enough charge, then you need a battery replacement and this guide is just for you!

## Be aware of the following before getting started:

- Go over the owner's manual for any safety precautions [here](#)
- Consider using gloves and/or eye protection as battery acid is a possibility and can harm your skin
- Make sure the Chromebook is fully dead and the battery has no charge left ensuring a safe replacement

## Does my Chromebook need a new battery?

- Your laptop takes a long time to charge.
- Your laptop dies unexpectedly.
- Your laptop battery looks bloated.
- Your laptop overheats.
- Your laptop tells you.

Finally, there are no special skills required and anyone can do this replacement with a few easy steps.



### TOOLS:

[1 x Opening Picks](#) (1)  
[Phillips #0 Screwdriver](#) (1)  
[iFixit Opening Tool](#) (1)

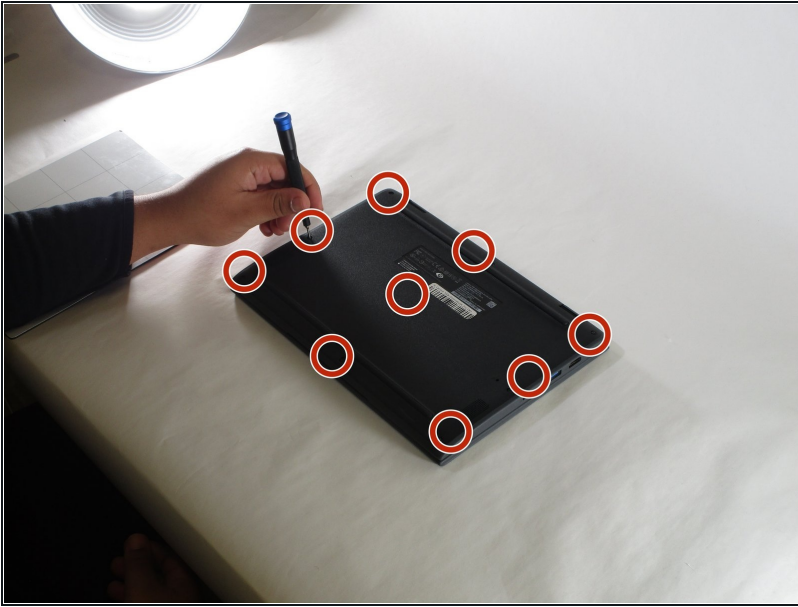


### PARTS:

[5B10X65680 - Lenovo Laptop Chromebook Battery - Genuine](#) (1)

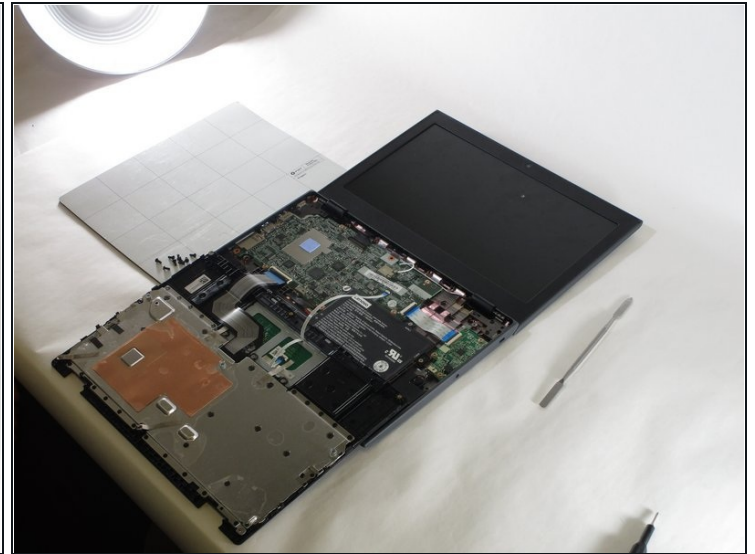
---

## Step 1 — Keyboard



- Remove the nine 6 mm screws from the back of the laptop using a Phillips #0 screwdriver.

## Step 2

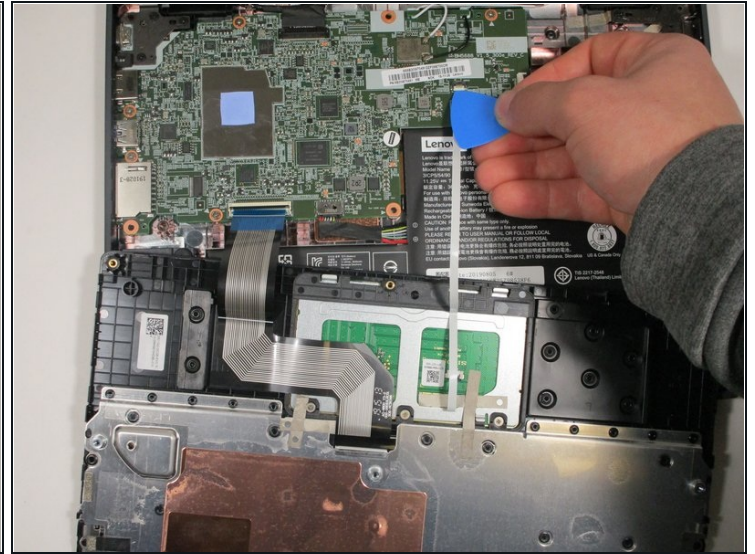
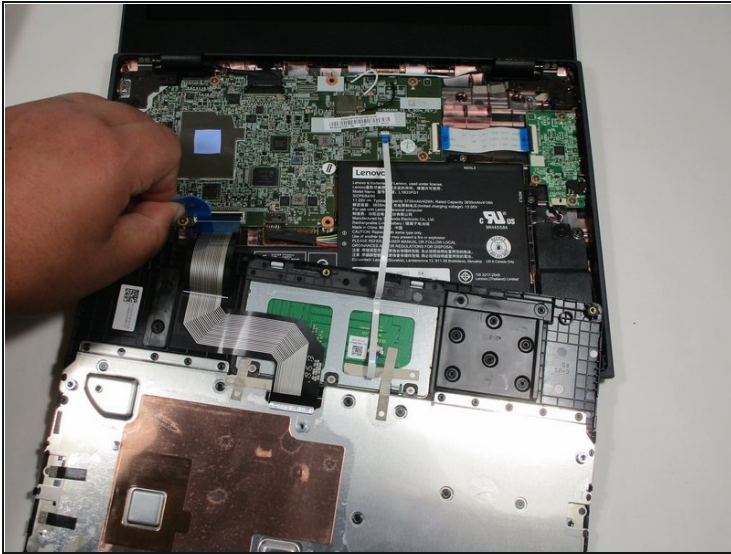


- Open the laptop and lay it flat.
- Go along the edge of the keyboard with an opening tool until it pops loose.

⚠ Potential for device damage: Make sure that the keyboard does not fall away from the laptop, as it is still connected to the internal components

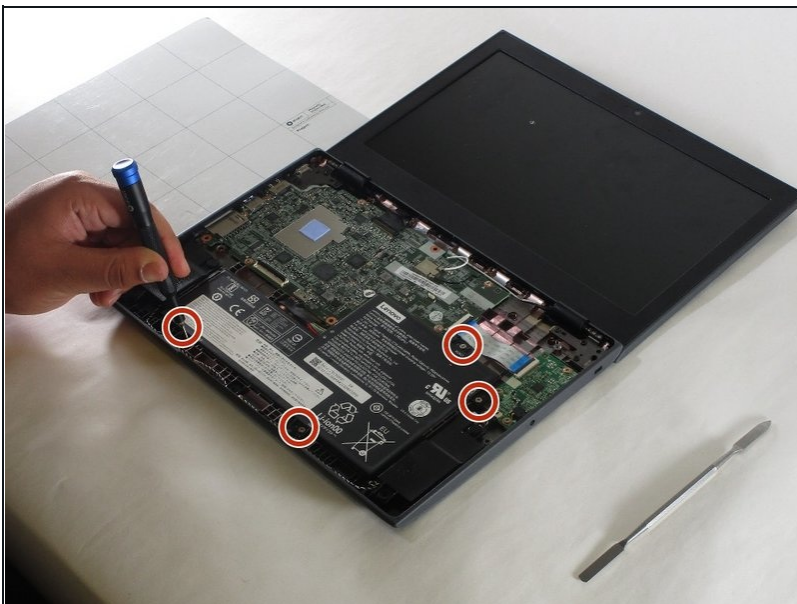


### Step 3



- Lift the keyboard connectors up using an opening pick.
- Remove the connectors from their sockets.

### Step 4 — Battery



- Remove the four 4 mm Phillips #0 screws holding the battery in.

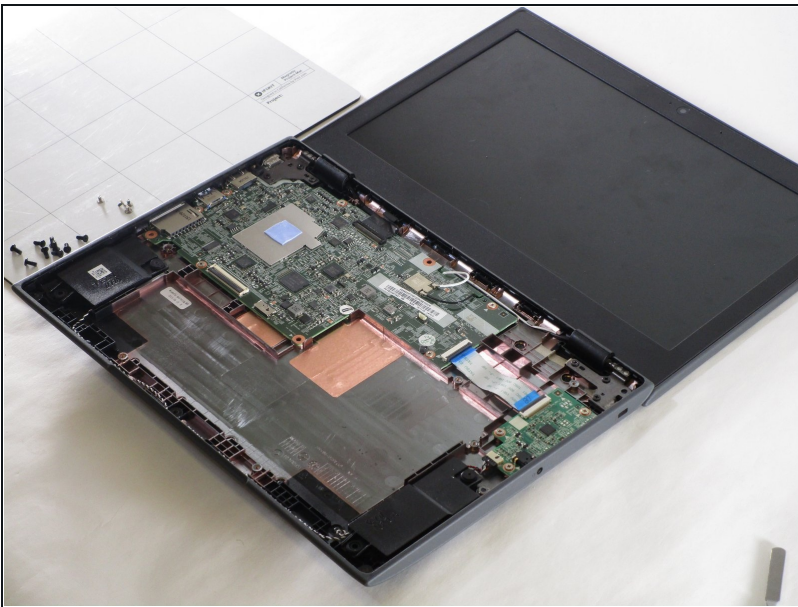
## Step 5



- Using an opening pick, push on the connection where the wires are connected to the motherboard.

⚠ Potential for device damage: This step takes some force to disconnect, but be careful to not pull the wires out of the battery.

## Step 6



- The battery is now loose and can be removed from the laptop.

---

To reassemble your device, follow these instructions in reverse order.