



# Toshiba Satellite A210 Optical Disc Drive Replacement

This guide will show you how to remove the optical drive from a Toshiba Satellite A210.

Written By: Bret Wilson



---

## INTRODUCTION

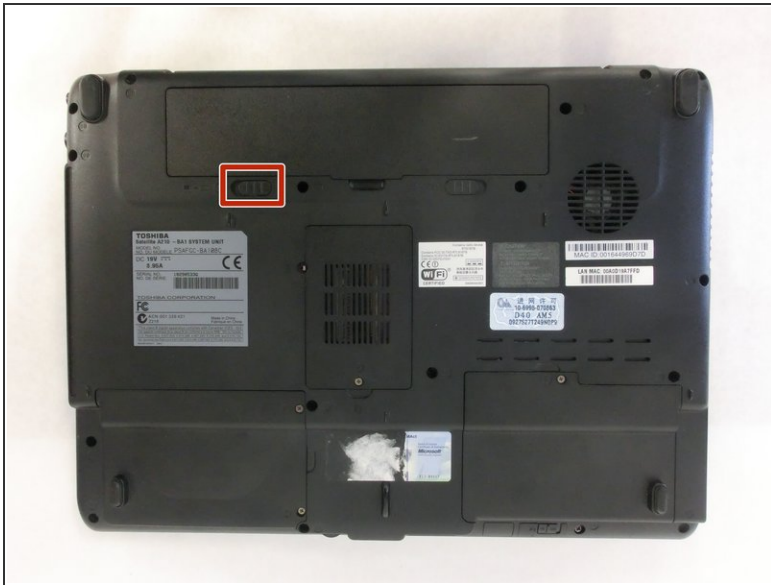
In this guide, you will learn in a step by step process how to remove an optical drive in your Toshiba Satellite. This guide does require some tool use. Follow each step according to the bullets provided.

---

### **TOOLS:**

- [Phillips #1 Screwdriver](#) (1)
  - [Phillips #0 Screwdriver](#) (1)
-

## Step 1 — Battery



- ⚠ Unplug the AC adapter and all other auxiliary components from the laptop.
- Slide the battery lock tab away from the center of the laptop to unlock the battery.

## Step 2



- Slide the battery release tab away from the center of the laptop and hold it.
- Lifting from the small notch between the two tabs, pull the battery out of the laptop.

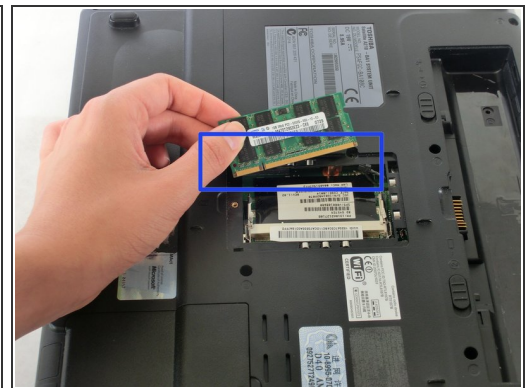
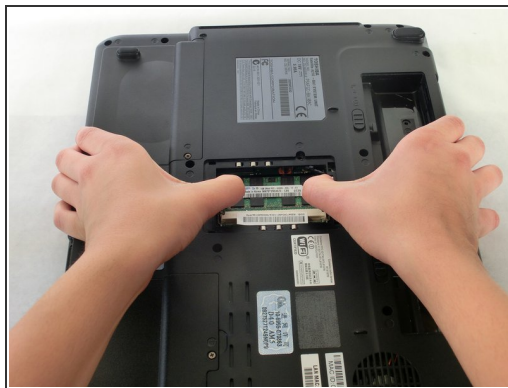


## Step 3 — RAM



- Remove the screw holding the RAM cover with a PH1 screwdriver.
- Remove the RAM cover.

## Step 4



- Push outwards on the metal tabs to release the RAM.
- Remove the RAM. Some force may be needed.

⚠ Be careful not to touch the gold pins on the RAM chips as there may be a build-up of static electricity. This can fry the parts of the chip that houses memory.

## Step 5 — Optical Disc Drive



- Use a PH0 screwdriver to remove the screw holding the optical drive in place.
- Using your index finger, push the metal tab inside the RAM bay which is located directly underneath the screw-hole.
- The optical drive will then slide out.

To reassemble your device, follow these instructions in reverse order.