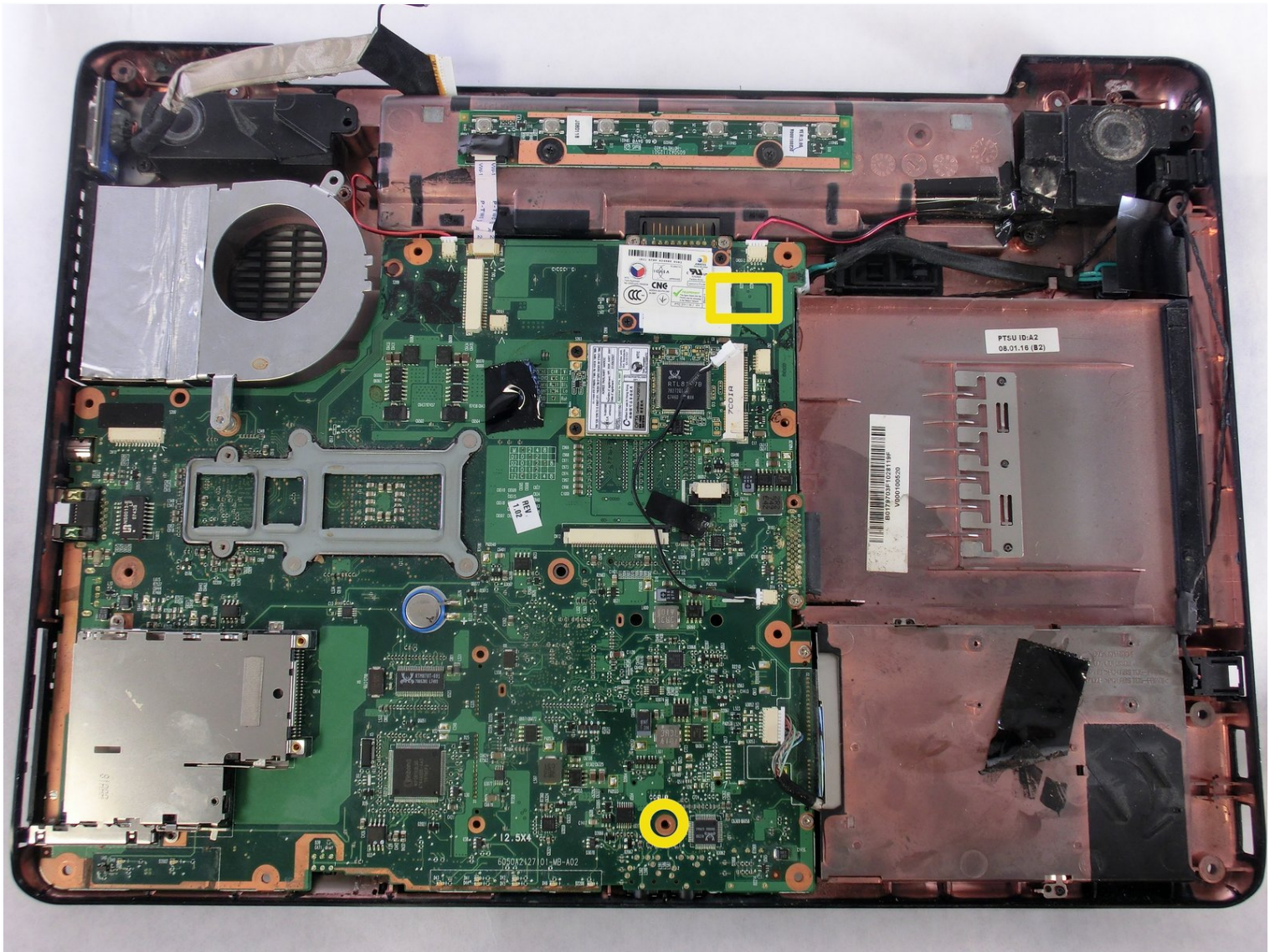




Toshiba Satellite A210 Motherboard Replacement

Before attempting this guide, please have all...

Written By: Devin



INTRODUCTION

Before attempting this guide, please have all required materials and tools. This guide is a long process and requires your full attention in order to properly replace it. When doing each step be careful and follow each step as listed.

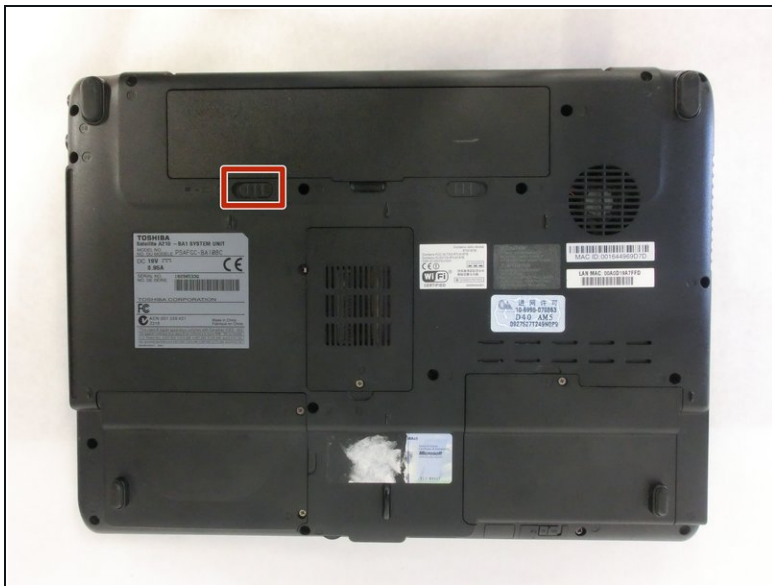
TOOLS:

Phillips #1 Screwdriver (1)

Phillips #0 Screwdriver (1)

iFixit Opening Tool (1)

Step 1 — Battery



 Unplug the AC adapter and all other auxiliary components from the laptop.

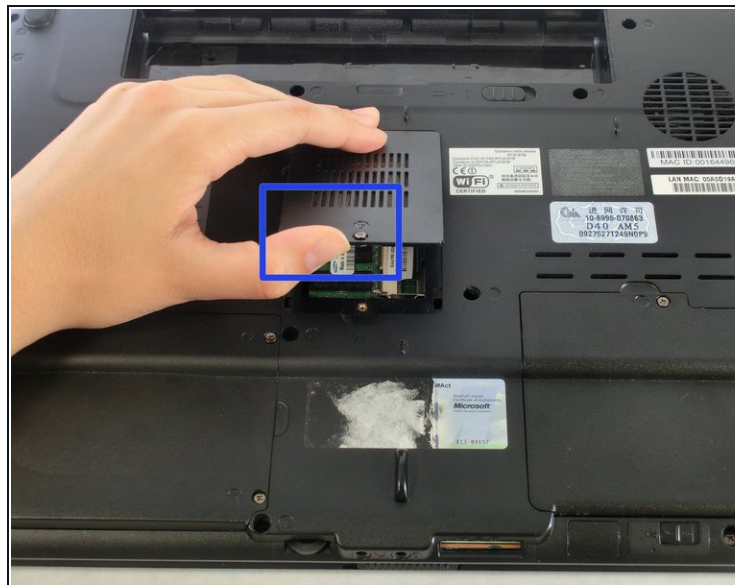
- Slide the battery lock tab away from the center of the laptop to unlock the battery.

Step 2



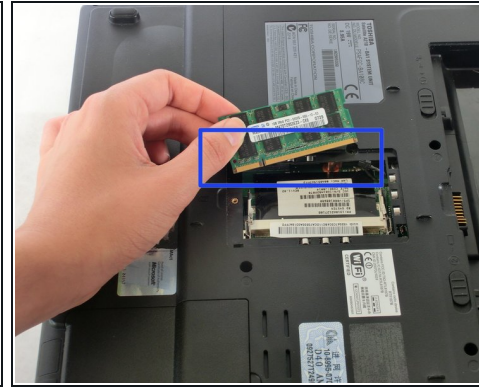
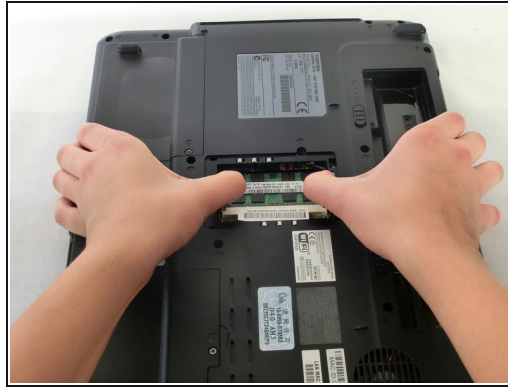
- Slide the battery release tab away from the center of the laptop and hold it.
- Lifting from the small notch between the two tabs, pull the battery out of the laptop.

Step 3 — RAM



- Remove the screw holding the RAM cover with a PH1 screwdriver.
- Remove the RAM cover.

Step 4

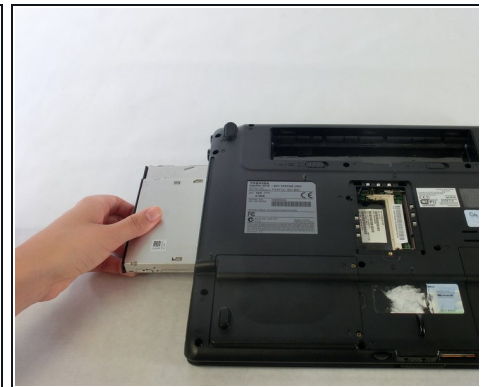
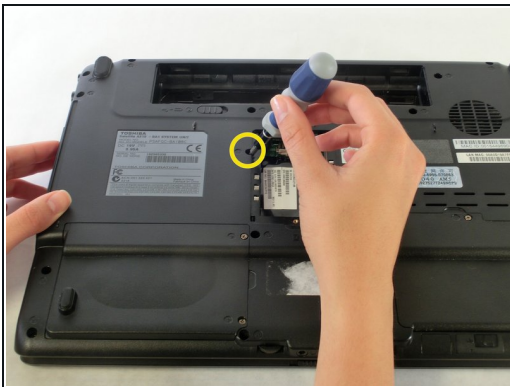


● Push outwards on the metal tabs to release the RAM.

● Remove the RAM. Some force may be needed.

⚠ Be careful not to touch the gold pins on the RAM chips as there may be a build-up of static electricity. This can fry the parts of the chip that houses memory.

Step 5 — Optical Disc Drive



● Use a PH0 screwdriver to remove the screw holding the optical drive in place.

● Using your index finger, push the metal tab inside the RAM bay which is located directly underneath the screw-hole.

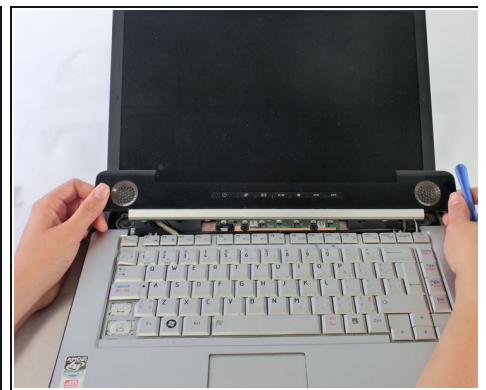
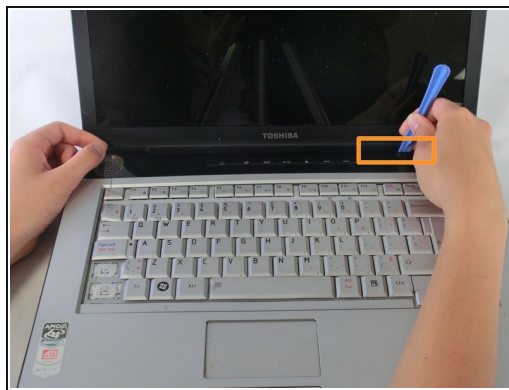
● The optical drive will then slide out.

Step 6 — Keyboard



- Unscrew the 4 highlighted screws with a PH1 screwdriver.

Step 7



- Orient the laptop so that the screen is open and facing you.
- Slide the plastic opening tool underneath the top edge of the black plastic insert.
- Pull it off and set aside.

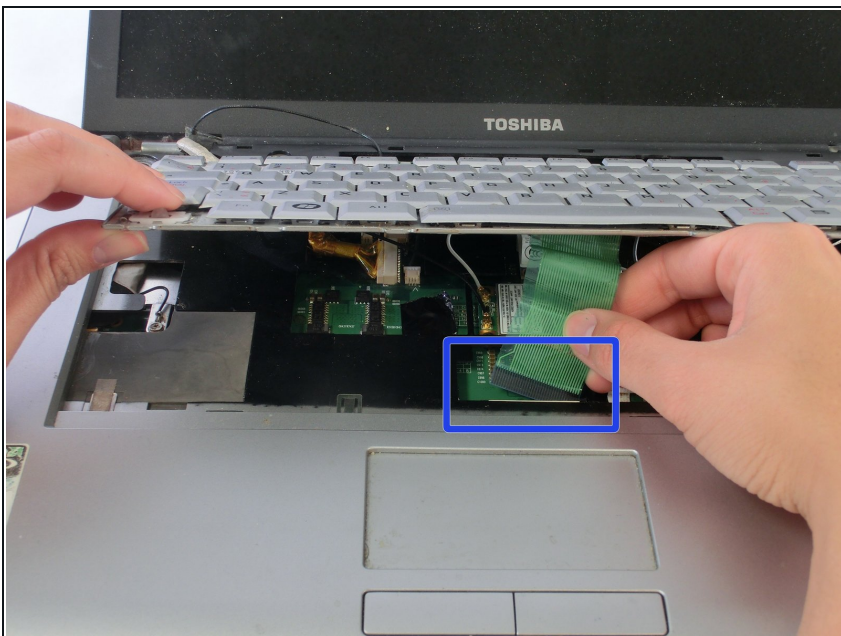
Step 8



- Remove the 2 PH1 screws.

⚠ Lift the keyboard from the top being careful not to remove it fully. There is still a ribbon cable that connects the keyboard to the laptop.

Step 9



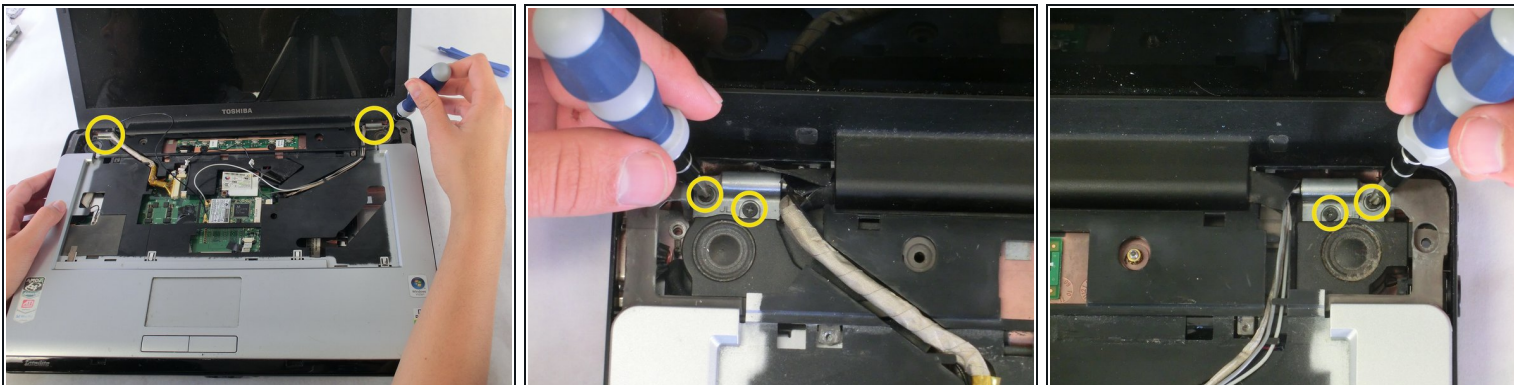
- Disconnect the keyboard ribbon cable and remove the keyboard from the laptop.

Step 10 — Fan



- Close the laptop and flip it over.
- Unscrew the 11 yellow circled screws with a PH1 screwdriver. These screws are larger in size.
- Unscrew the 2 red and yellow circled screws with a PH1 screwdriver. These screws are shorter and thicker than the previous.
- Unscrew the 1 green and yellow circled screw with a PH1 screwdriver. This screw is longer and thinner than the previous.

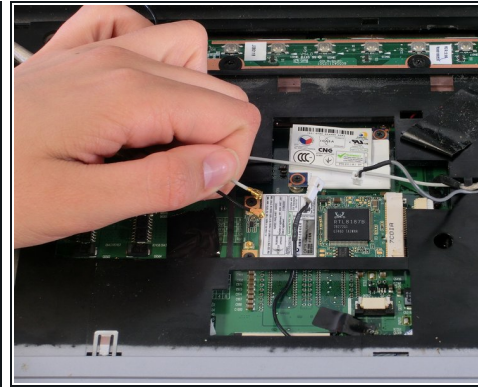
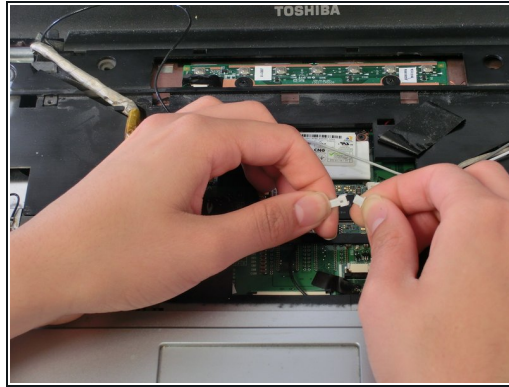
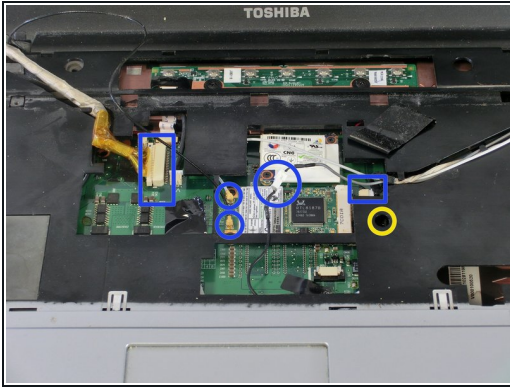
Step 11



- Flip the laptop over and open it so that the screen is facing you.
- Locate the hinges on either side of the screen, which secure the display to the body of the laptop.
- Unscrew the 2 screws in each hinge with a PH1 screwdriver.

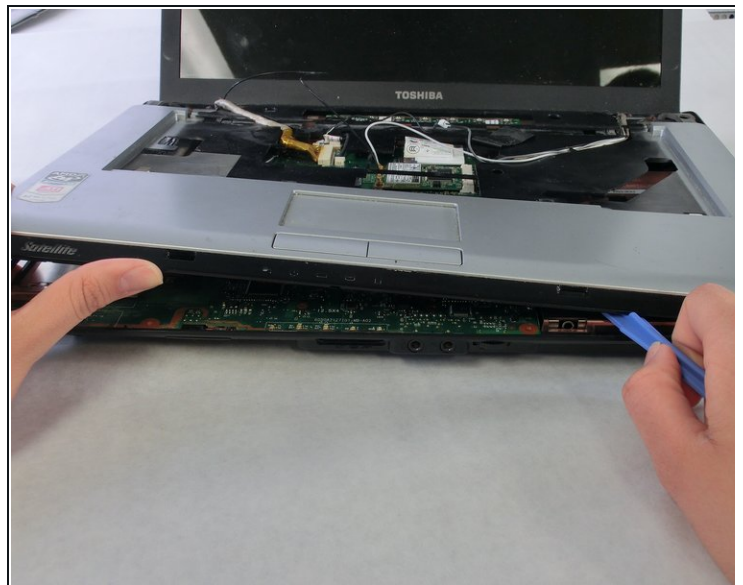
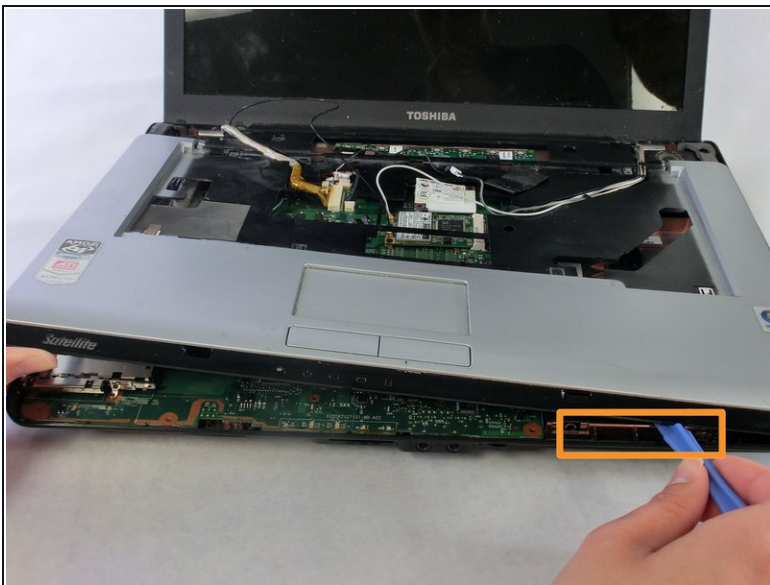
⚠ The display is no longer connected to the laptop and could fall. Be careful not to drop it during the next steps.

Step 12



- Unfasten the connectors from the highlighted locations.
- Disconnect by gently pulling on the fasteners which connect the wires to the laptop.
- ⚠ Pulling directly on the wires could cause permanent damage to the connectors or the wires themselves.
- Unscrew the screw indicated by the yellow circle.

Step 13



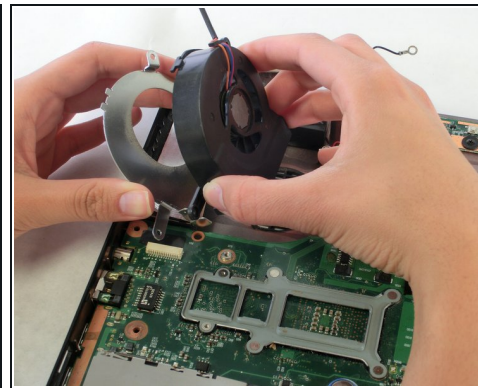
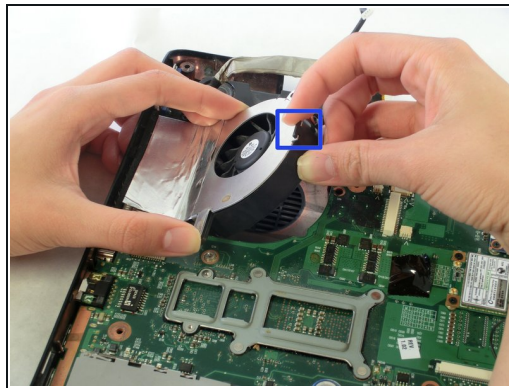
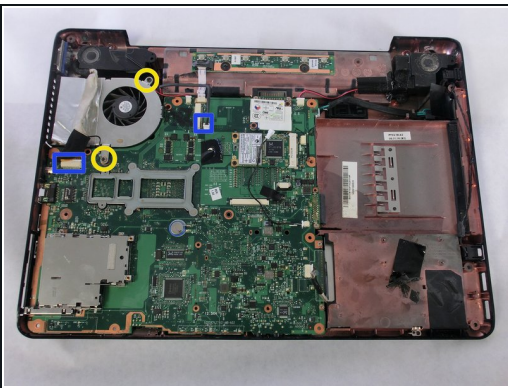
- Slide the plastic opening tool underneath the edges of the upper casing, which is shown in the images.

Step 14



- The LCD screen can now be removed from the laptop.
- Lift the upper plastic casing and remove it from the lower half of the laptop.

Step 15



- Unfasten the two connections shown.
- Unscrew the two screws securing the fan to the laptop. Use a PH1 for the screw that is adjacent to the speaker and a PH0 for the other screw.
- Lift up the fan and pull the black plastic tab away from the fan housing. Remove the fan.

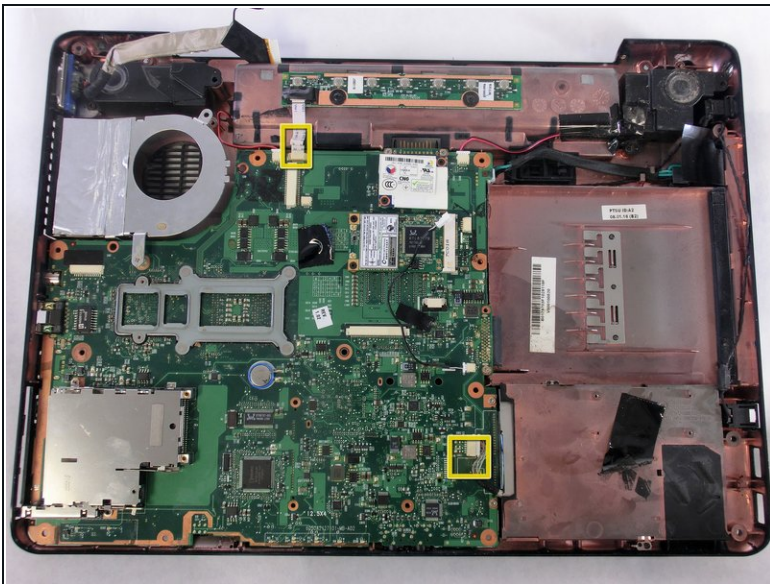
⚠ Do not remove the metal fan housing. It is taped to a metal heat-sink and should not be removed.

Step 16 — Motherboard



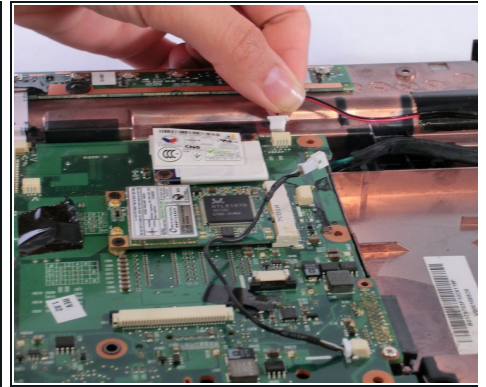
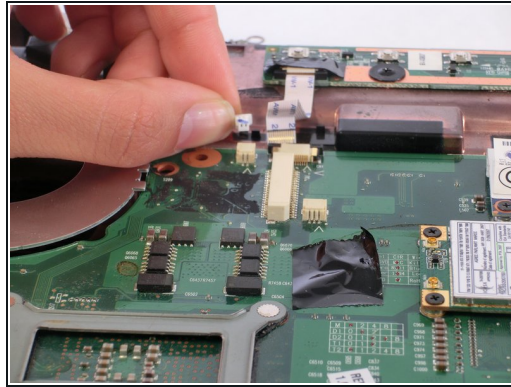
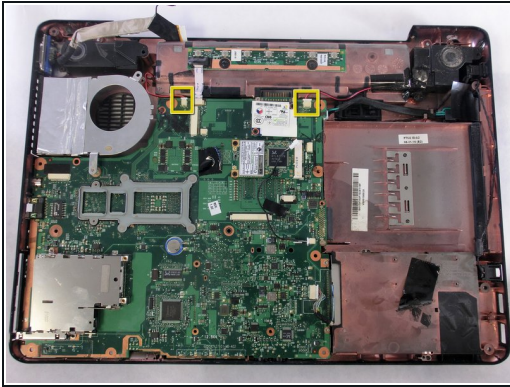
- First, remove the one screw with a PH1 screwdriver.
- Next, remove the black connector marked by the yellow box.

Step 17



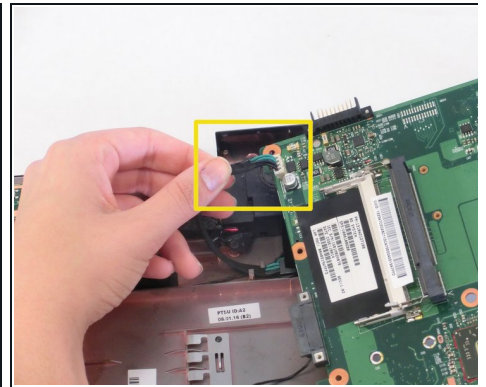
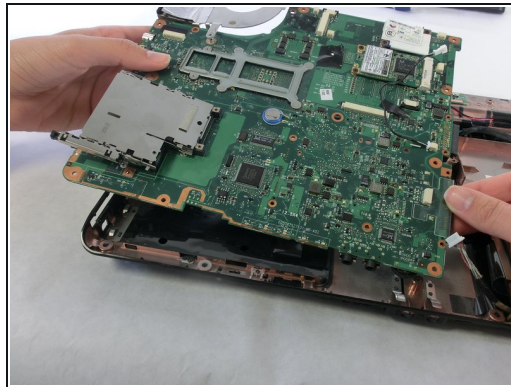
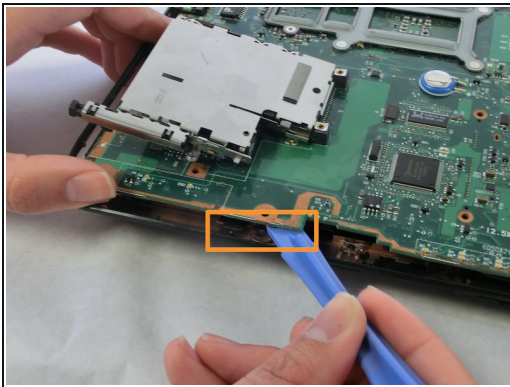
- Gently pull the the small white ribbon cable from its housing on the motherboard.
- Locate and unfasten the small white clip from the motherboard near the bottom right.

Step 18



- Disconnect the two white fasteners that connect the speakers to the motherboard.

Step 19



- Gently slide the plastic opening tool underneath and around the motherboard.

⚠ Do not force the motherboard out. If the motherboard breaks, it is not repairable. You will have to buy a new one.

⚠ After the motherboard is free of the plastic casing, do not pull it all the way out. There is still a connector on the underside of it.

- Remove the connector on the underside using your fingers.

To reassemble your device, follow these instructions in reverse order.