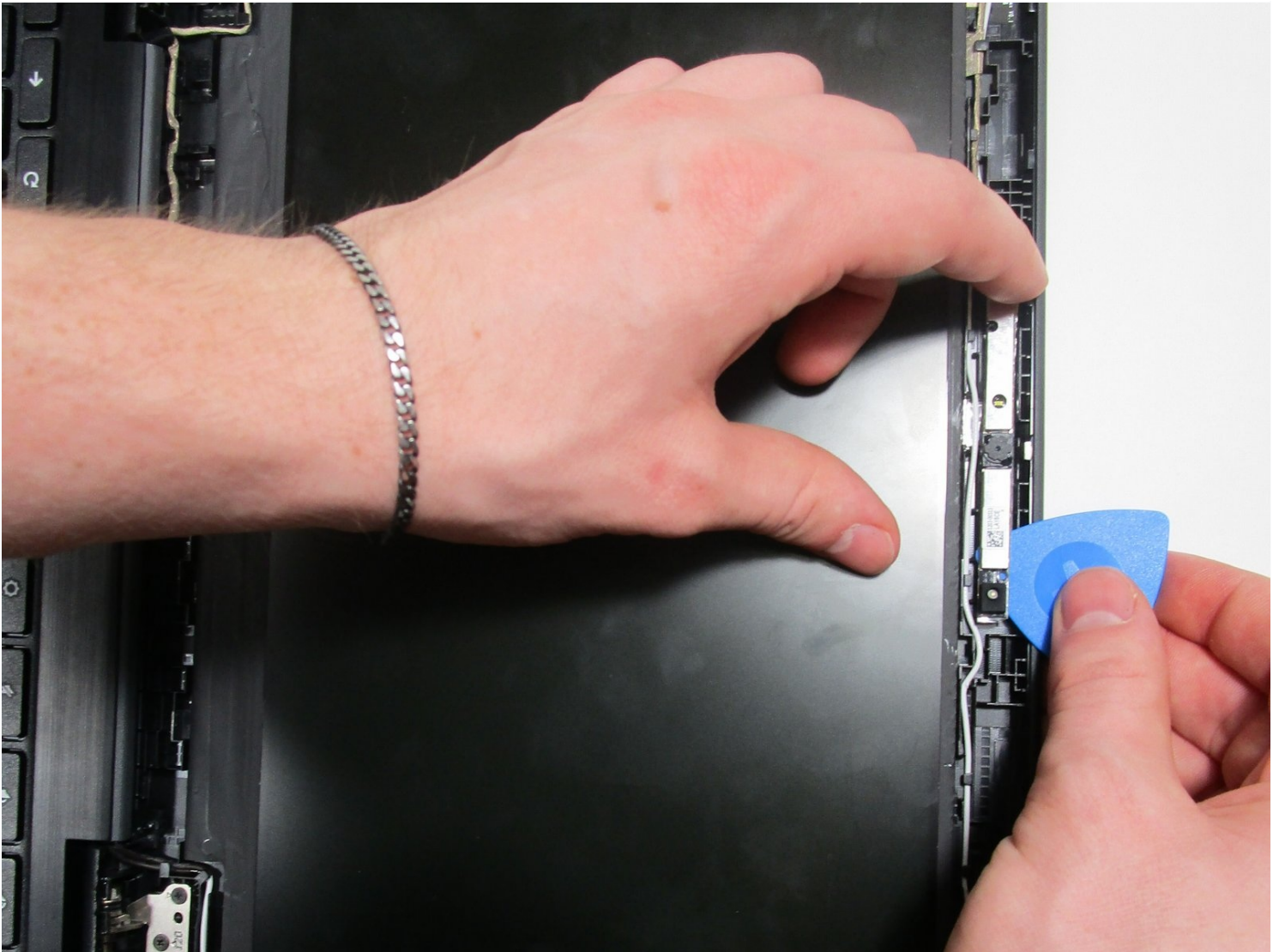




Lenovo 100e Chromebook 2nd Gen Camera Replacement

This guide will show the steps needed to take...

Written By: Chester Wallace



INTRODUCTION

This guide will show the steps needed to take out and replace the front facing camera in the Lenovo Chromebook 100e 2nd Gen. The only tool required for this replacement is a plastic pick. The wires are delicate, so make sure to be careful when unplugging the camera as seen in Step #2.

TOOLS:

Spudger (1)
1 x Opening Picks (1)

PARTS:

5C20Y66496 - Lenovo Laptop
Camera - Genuine (1)

Step 1 — Screen Bezel



- Using a spudger, go along the edge of the screen and pop the connections between the cover and the back side out.

Step 2



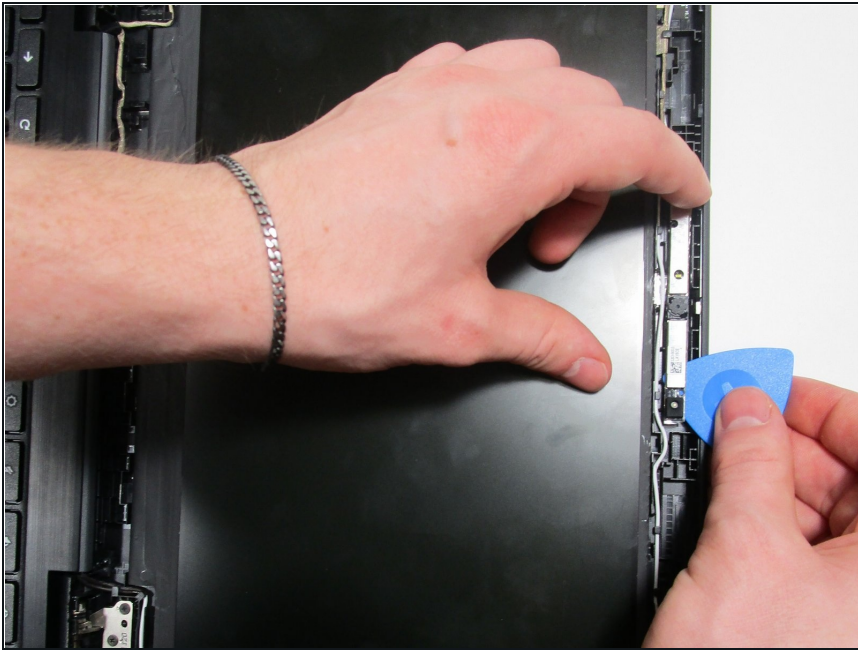
- Insert the spudger into the gap between the hinges and pull up to detach the connections.

Step 3



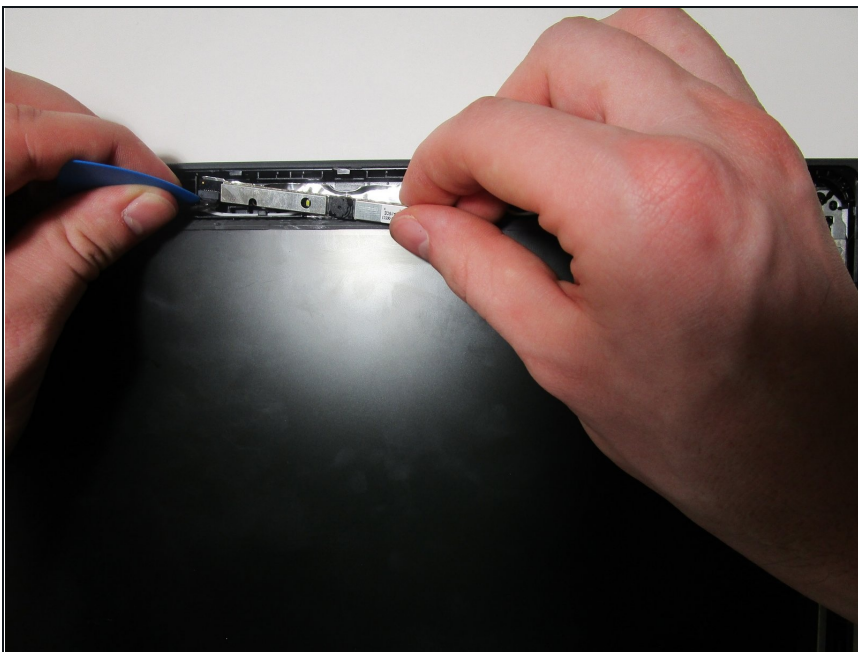
- Remove the screen bezel from the laptop.

Step 4 — Camera



- Using the opening pick, pry the camera from the front of the laptop.

Step 5



- Carefully pinch and pull on the connection between the camera and the motherboard.
- The camera is now loose and can be removed.

To reassemble your device, follow these instructions in reverse order.

