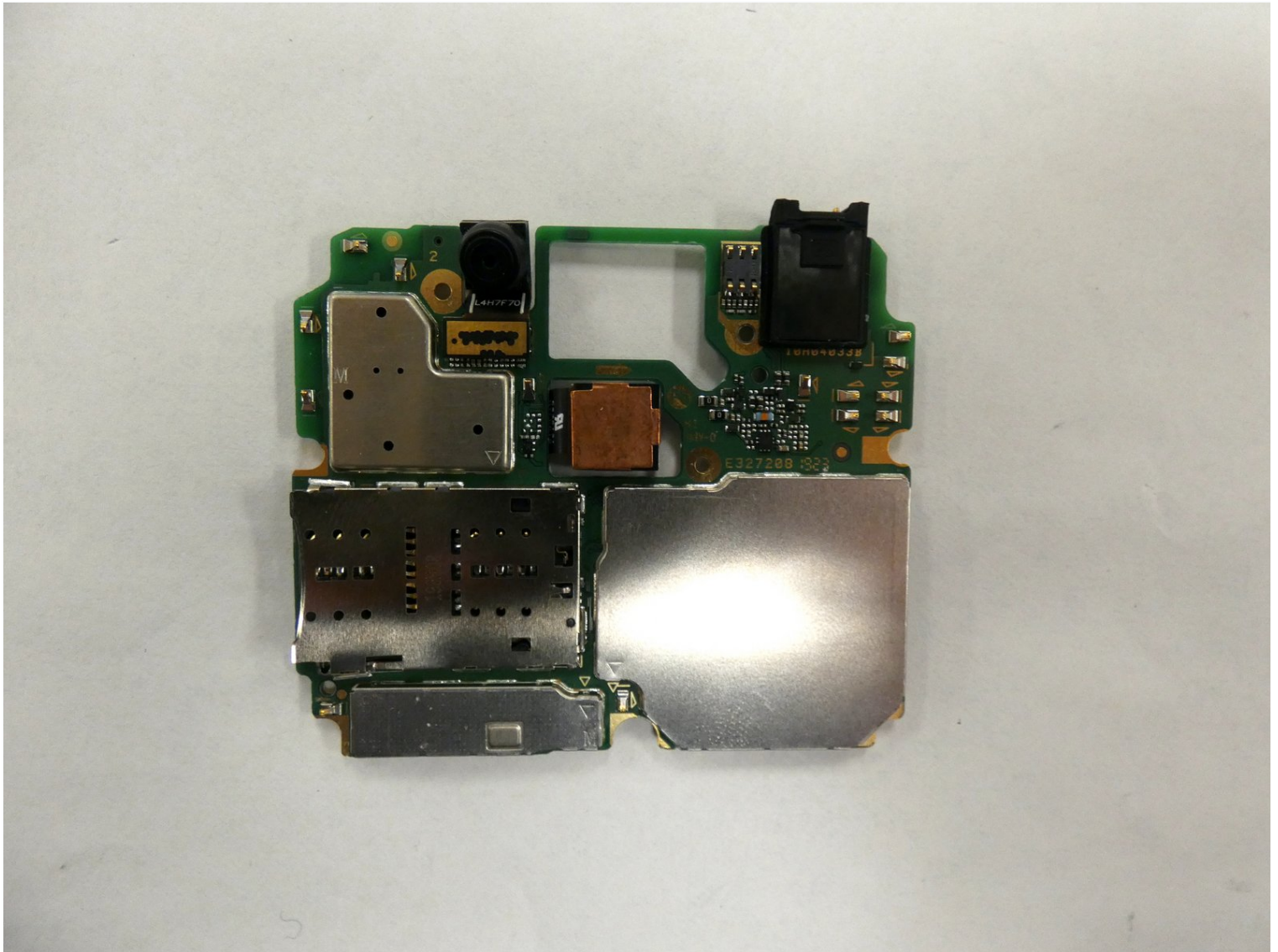




Motorola Moto G7 Play Front Facing Camera Replacement

This guide will show each detailed step to...

Written By: curt caudle



INTRODUCTION

This guide will show each detailed step to removing and replacing the front facing in the Motorola G7 Play, model number XT1952-3 or XT1952-2. The front camera is used to take selfie photos on the phone. If the phone doesn't have a way to capture selfie photos the front facing camera is no longer working.

Before you begin, download the [Rescue and Smart Assistant](#) app to backup your device and diagnose whether your problem is software or hardware related.



TOOLS:

[iFixit Opening Picks \(Set of 6\)](#) (1)

[iFixit Opening Tool](#) (1)

[Phillips #00 Screwdriver](#) (1)

[SIM Card Eject Tool](#) (1)

[Phillips #000 Screwdriver](#) (1)

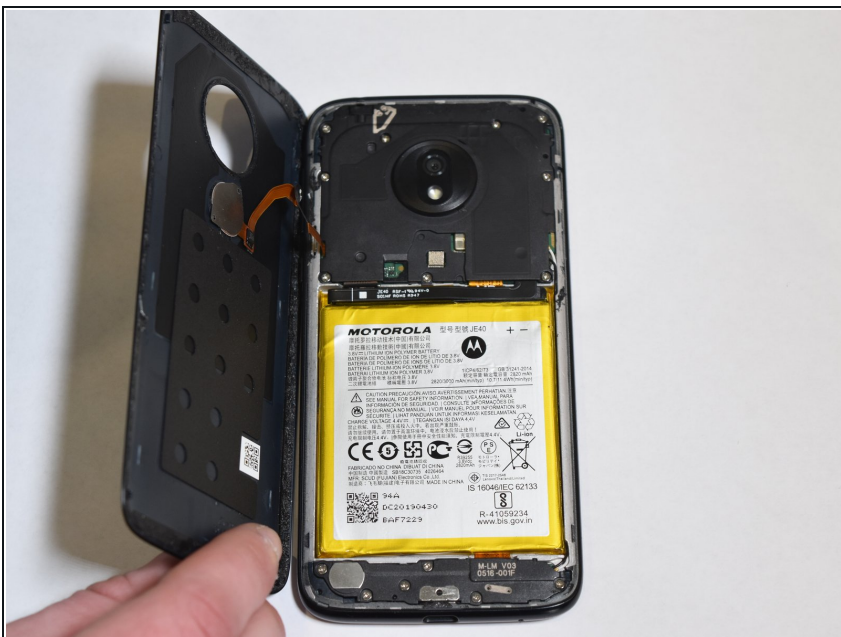
Step 1 — Back Cover



⚠ Turn off your device before you begin.

- Use the iFixit pick to break the adhesive around the back case.
- ⓘ Use a heat gun, hairdryer, or iOpener to weaken the adhesive around the back case. If you're using the iOpener, please review the [instructions](#) for proper use.

Step 2



- Detach the back case from the phone.

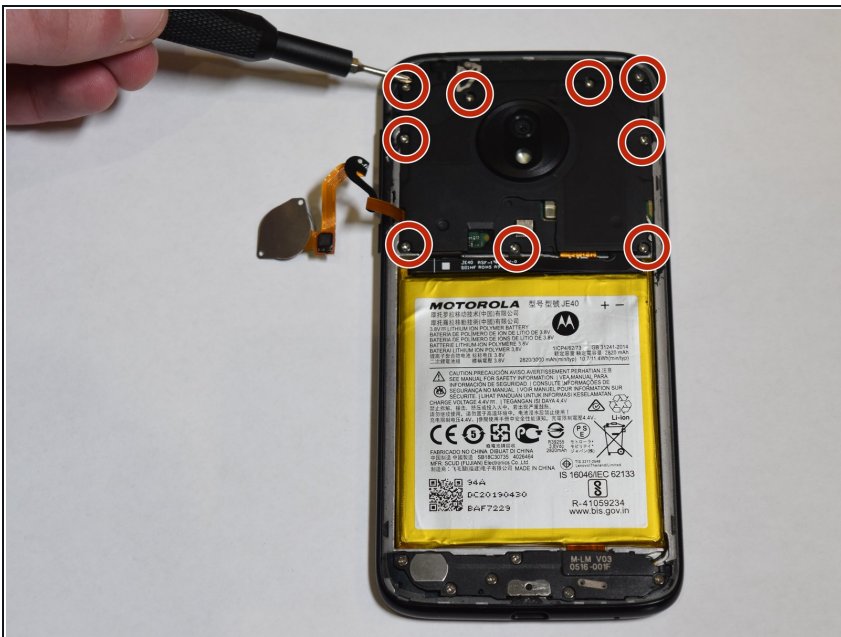
⚠ Make sure the back is opened right to left so the cable of the fingerprint scanner does not get damaged.

Step 3



- Use the iFixit pick and the iFixit opening tool to pull the fingerprint scanner off of the back case.

Step 4 — Motherboard



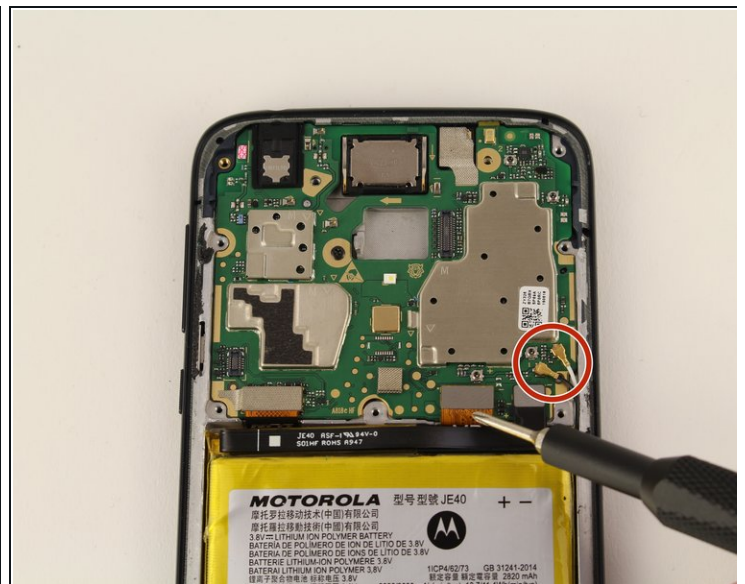
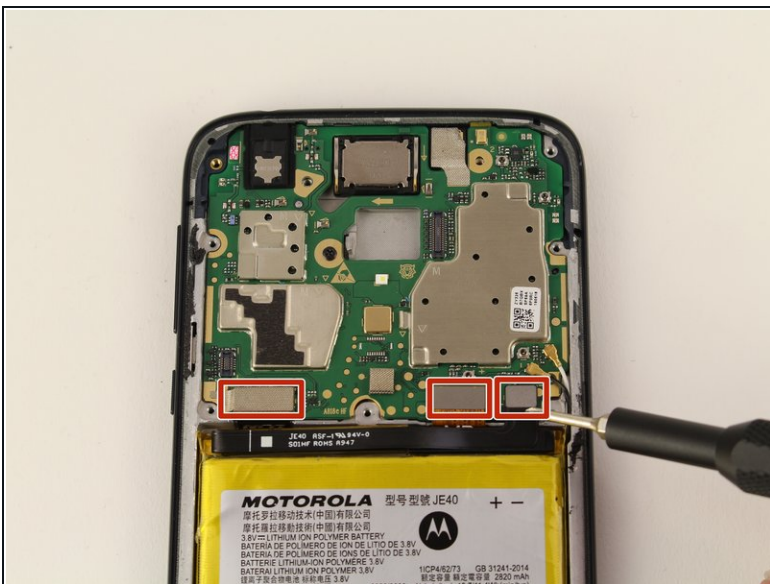
- Remove the nine 3.2mm screws from the motherboard cover with a Phillips #00 screwdriver.

Step 5



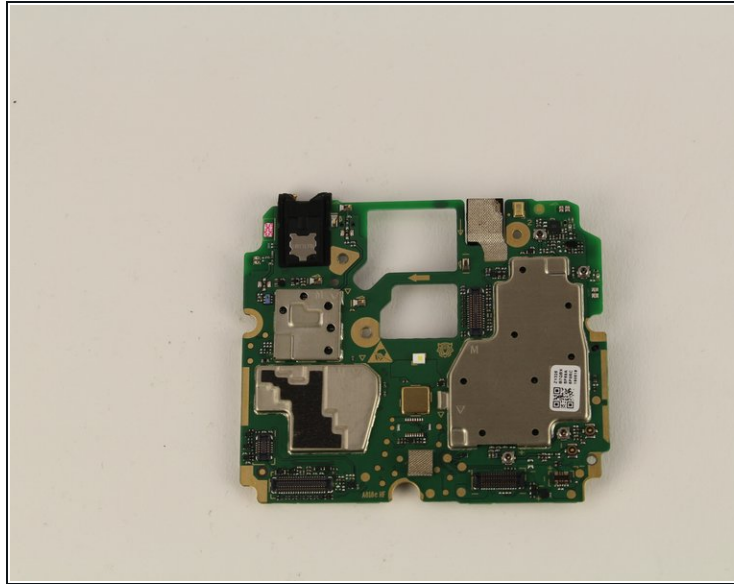
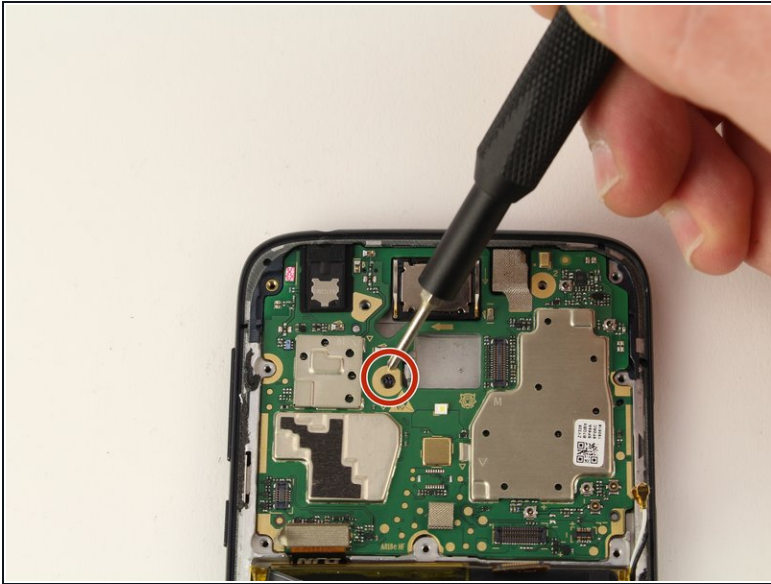
- Lift motherboard cover off by the bottom.
- ① Use reverse tweezers or a similar tool if needed.

Step 6



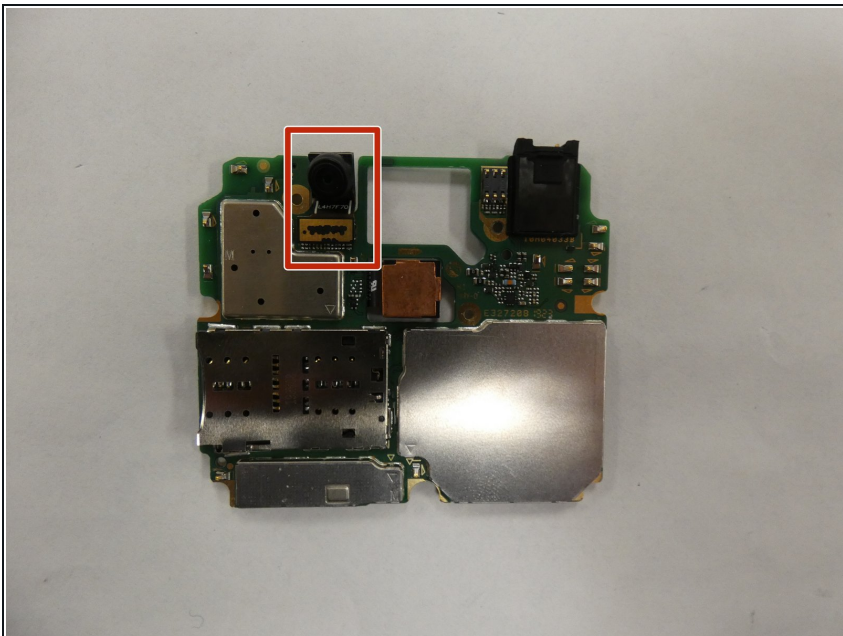
- Once the motherboard cover is removed, disconnect the four ribbon cables and the two wires attached to the motherboard.

Step 7



- Using the Phillips #00 screwdriver, remove the single 0.4 mm black screw in the center of the motherboard.
- Remove the motherboard from the device.

Step 8 — Front Facing Camera



- Separate the front facing camera from the motherboard while removing the adhesive .

To reassemble your device, follow these instructions in reverse order.