



Toshiba Portege M400 Screen Replacement

In this guide, you will learn how to...

Written By: Varsha Roopreddy



INTRODUCTION

In this guide, you will learn how to disassemble the broken/damaged screen from the rest of the laptop, allowing you to replace it for a new one. This guide will also teach you what the proper and necessary tools are for this repair.



TOOLS:

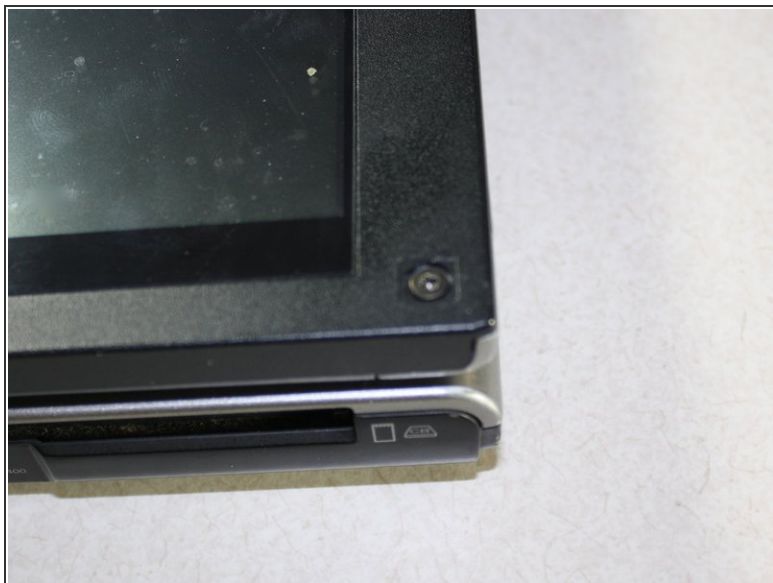
- [iFixit Opening Tool](#) (1)
- [Phillips #1 Screwdriver](#) (1)



PARTS:

- [New 12" LCD Screen](#) (1)

Step 1 — Screen



- Using a plastic opening tool, remove all stickers covering the screws.
- ⓘ Note: There are 6 locations; 2 at the top corners, 2 at the bottom corners, and 2 more at the bottom, towards the center of the screen.

Step 2



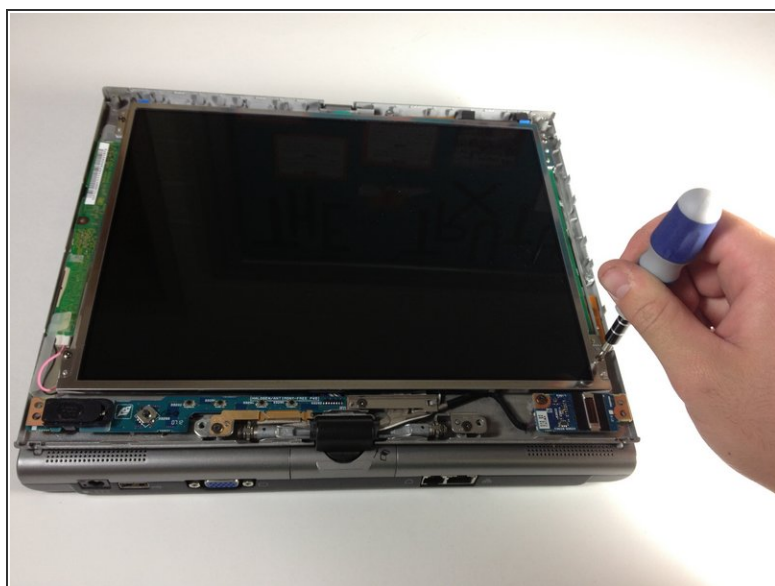
- Remove all six 3.8mm screws from the screen using a #1 Phillips screwdriver.

Step 3



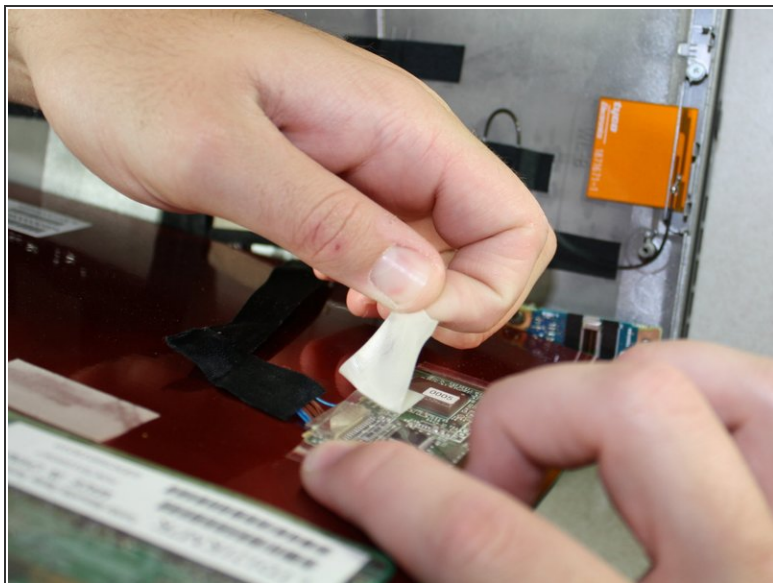
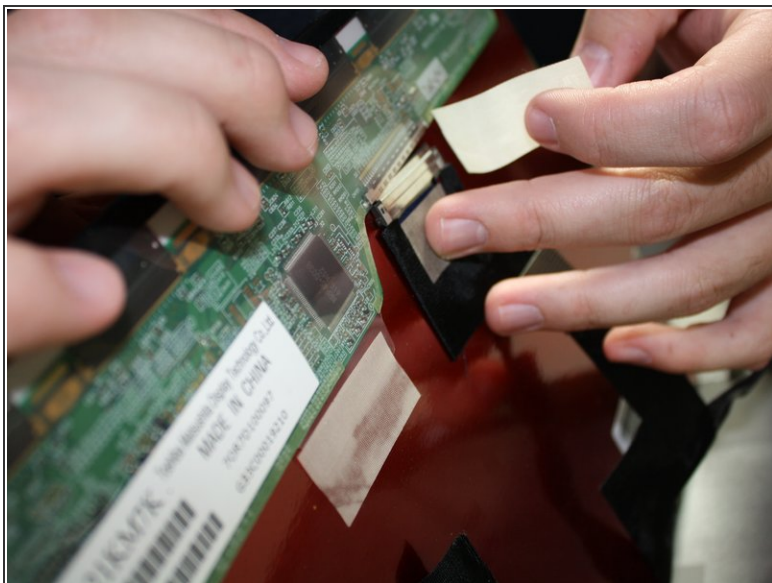
- With a plastic opening tool, prop the plastic panel up to separate it from the rest of the laptop.
- Slowly pull the plastic panel from the entire laptop.

Step 4



- Remove the four 5 mm screws with a Phillips #1 screwdriver, each located at the four corners of the screen.

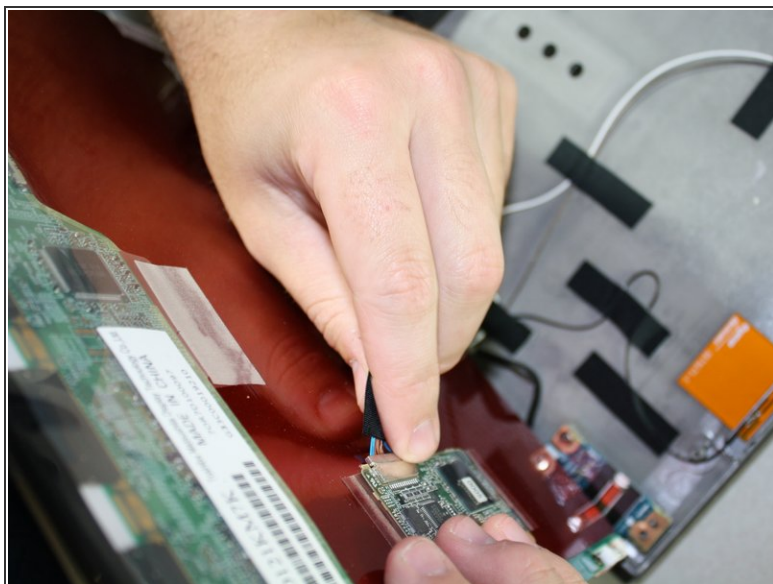
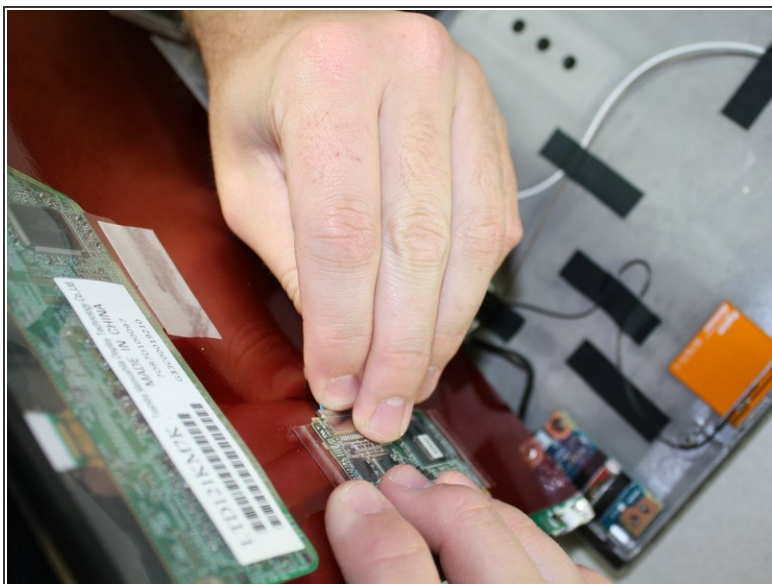
Step 5



⚠ Carefully lift up the screen from the rest of the laptop and let it lean towards you, as it is still attached to cords and other wirings.

- Remove all white tape that hold the cords and wirings together.

Step 6



i Note: Some parts need unplugging. Slowly and carefully unplug each of the components.

Step 7



- At this point, the screen should be completely disconnected from the rest of the laptop.

To reassemble your device, follow these instructions in reverse order.