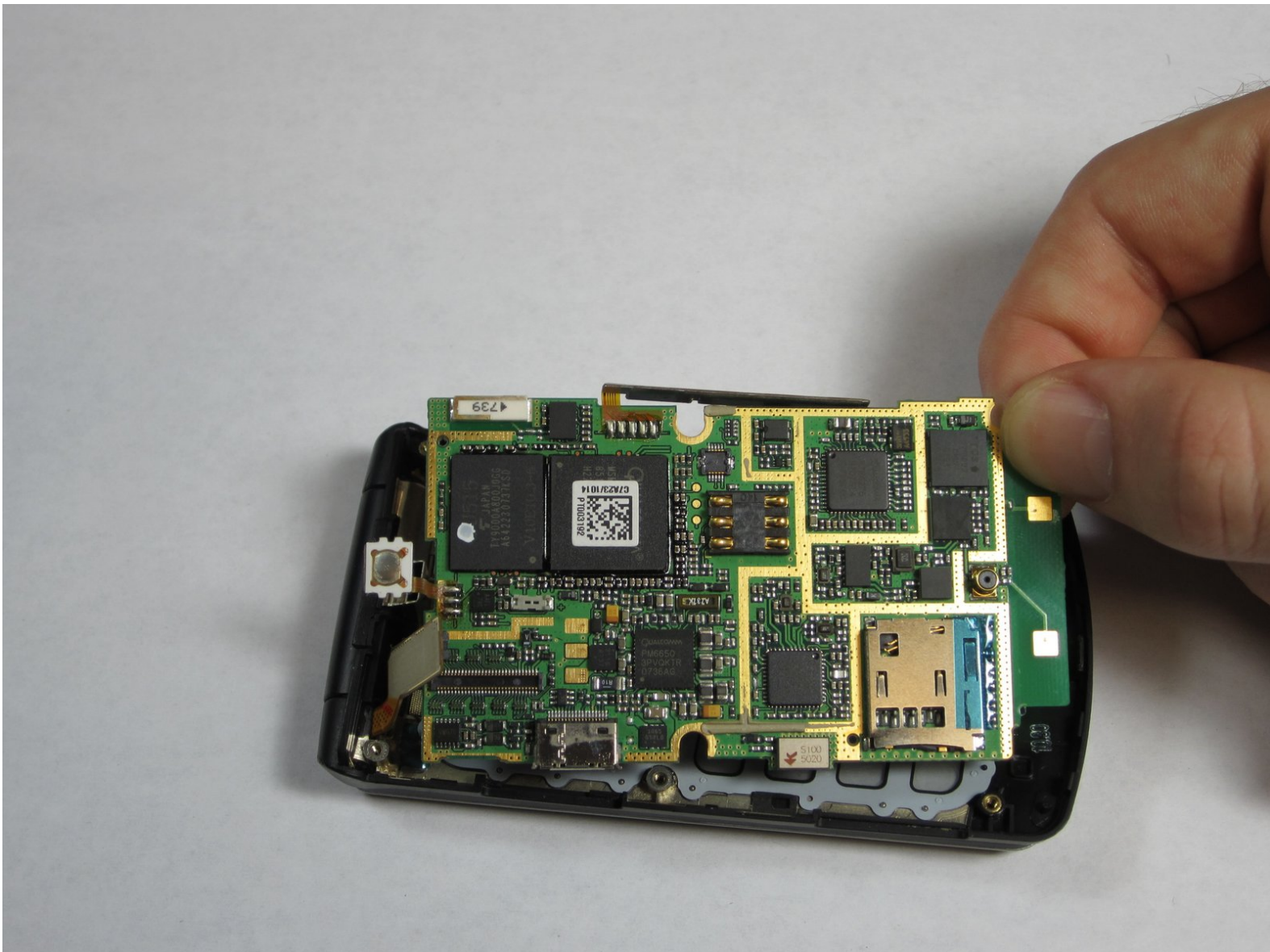




LG CU515 Motherboard Replacement

This guide shows how to install a new motherboard on the LG CU515.

Written By: Zack Mintzer



INTRODUCTION

The motherboard allows all the different parts and functions of the phone to work together.



TOOLS:

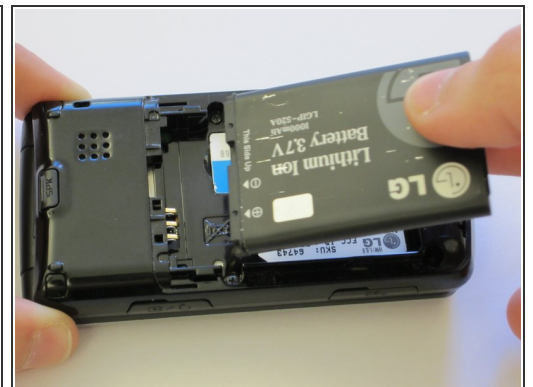
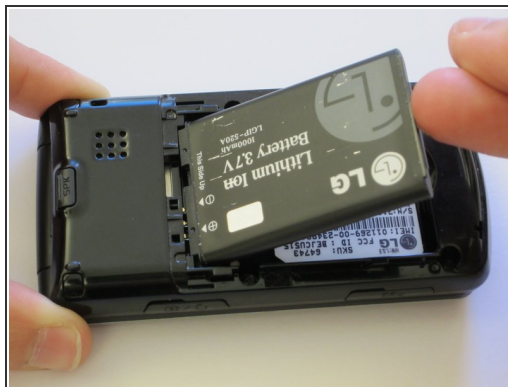
- [Phillips #00 Screwdriver](#) (1)
 - [iFixit Opening Tools](#) (1)
 - [Spudger](#) (1)
-

Step 1 — Battery



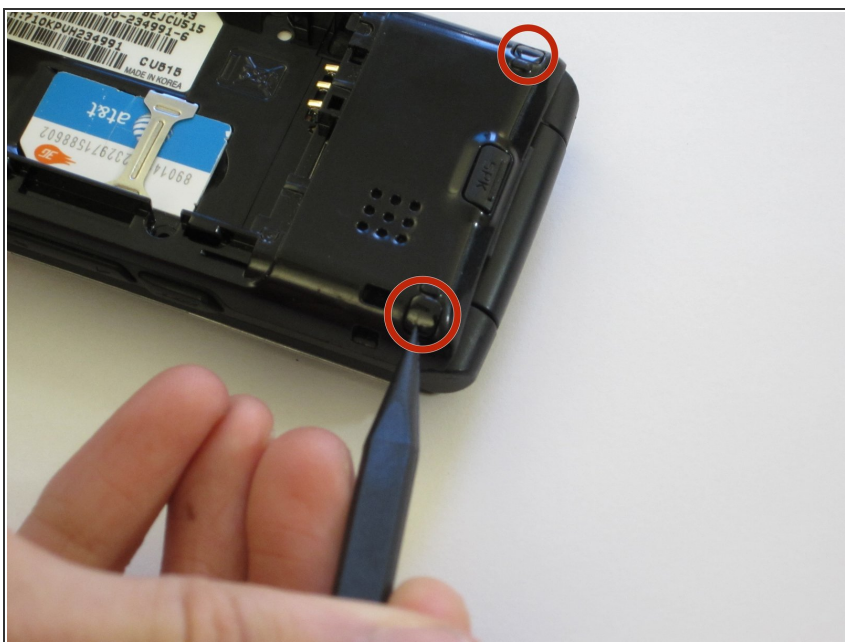
- Use your thumb to press down and slide off the back cover of the phone.

Step 2



- Take out the battery by levering it out towards the bottom of the phone.

Step 3 — Motherboard



- Push the spudger between each of the two rubber cushions and the body of the phone. Then turn the spudger to pop each cushion out.

Step 4



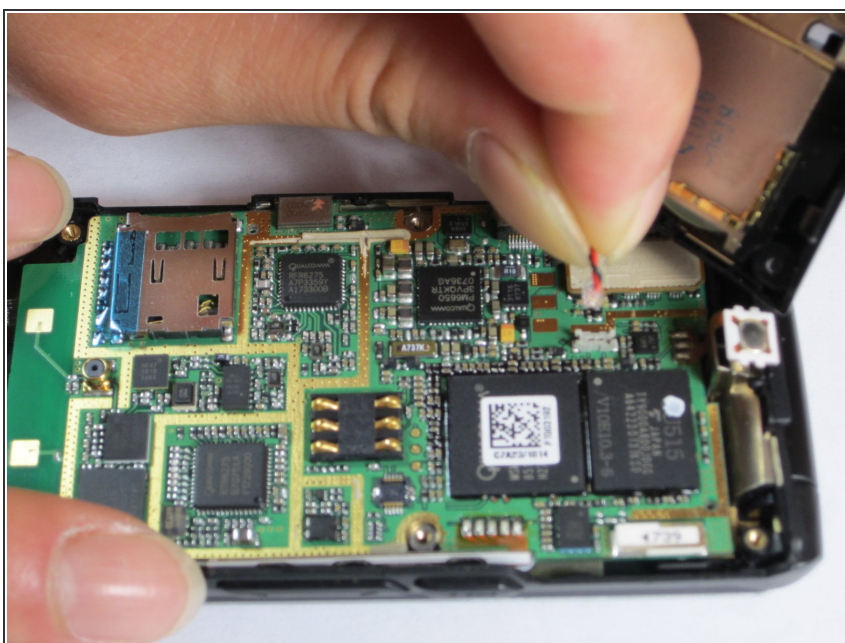
- Remove six 3.0 mm Phillips #00 screws from the back of the phone.

Step 5



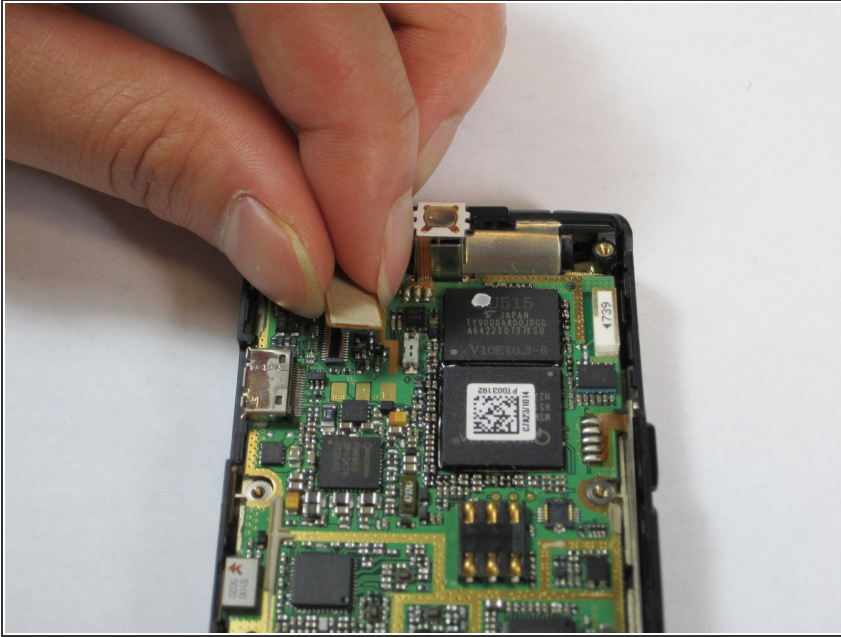
- Push the spudger into the crack separating the two pieces of the phone.
- Then use the plastic opening tools to pry the back off by separating the two pieces of the phone.
- Repeat as necessary around the perimeter of the phone until the casing pops off. Use force as necessary without breaking the cover.
- The back is attached to the motherboard by a wire, so don't pull the back casing off just yet.

Step 6



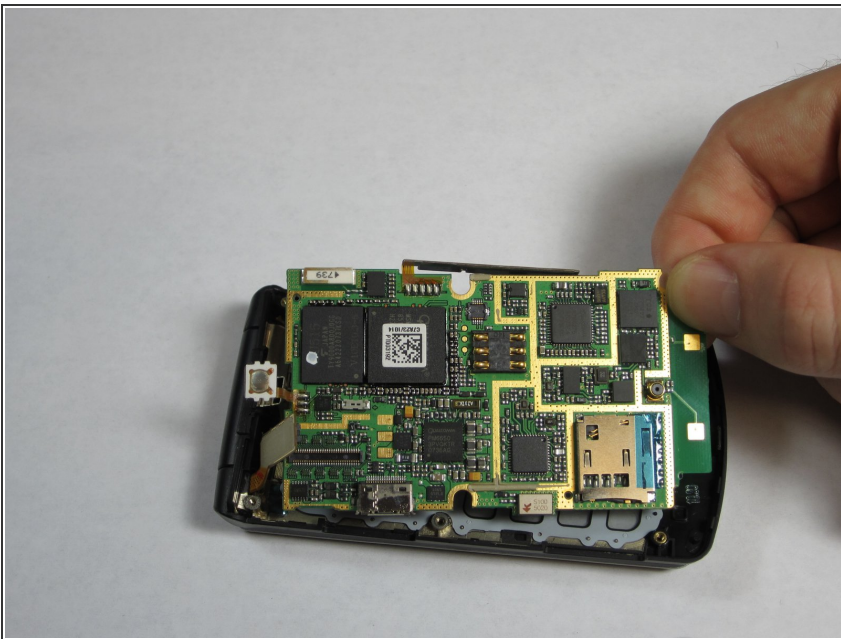
- Gently pull the wire up from the motherboard, separating the back of the phone and the motherboard.

Step 7



- Remove the plastic tab connecting the screen to the motherboard by pulling the tab up from the board.

Step 8



- Gently grasp one of the corners of the motherboard and simply lift it straight up out of the phone casing.
- Replace the motherboard with a new one.

To reassemble your device, follow these instructions in reverse order.