



# How to Upgrade the Expandable Storage in a PlayStation

## 5

Follow this guide to add expandable SSD storage...

Written By: Robert Boyd



# INTRODUCTION

Follow this guide to add expandable SSD storage to your PlayStation 5.

**Before starting this guide, make sure that your M. 2 blade SSD is compatible with [Sony's specifications](#).** The SSD blade seen in the photos is not suitable for the expandable storage slot in the PlayStation 5.

**Also, make sure that you have updated your PlayStation has been updated with the latest system software.**

Before you begin, completely **power down and unplug all cables** from your console. Remember to follow general electrostatic discharge (ESD) safety procedures while repairing the console.

## TOOLS:

[Flathead 3/32" or 2.5 mm Screwdriver](#) (1)  
[Phillips #0 Screwdriver](#) (1)  
[Tweezers](#) (1)


## PARTS:

[PlayStation 5 Storage Upgrade Kit](#) (1)

## Step 1 — Remove the stand screw



- If your PlayStation 5 is in its vertical orientation, flip it upside down so the stand is facing up.
- ① If your PlayStation 5 is in its horizontal orientation, skip to Step 6.

 **Work on a flat surface to prevent your PlayStation from falling over.**

- Use a coin or a flathead screwdriver to remove the 26.5 mm-long stand screw.

## Step 2 — Remove the vertical stand



- Lift straight up to remove the stand.

## Step 3 — Store the stand screw



- Insert the screw into the cubby on the bottom of the stand.

#### Step 4 — Cap the screw hole



- Use a pair of tweezers or your fingernail to remove the cap from the cubby.
- Use your finger to press the cap into the screw hole.

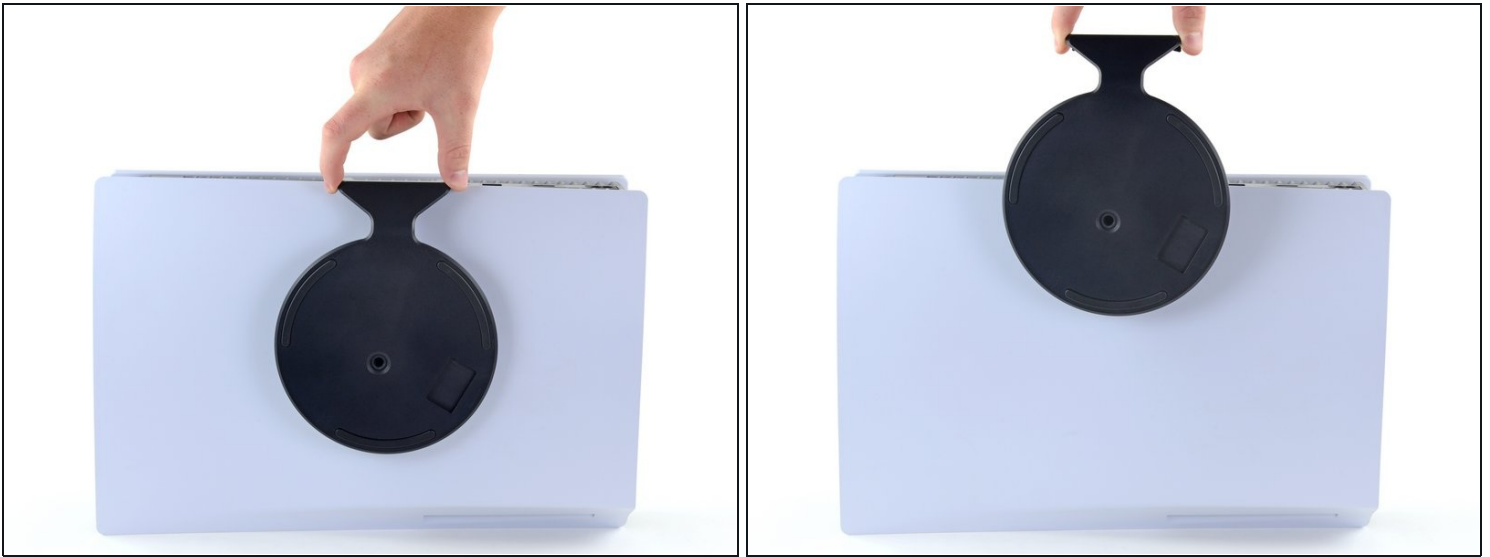
#### Step 5 — Close the cubby



- Twist the stand counterclockwise to close the cubby.



## Step 6 — Remove the horizontal stand



- If your PlayStation 5 is in its horizontal orientation, rest it on its face with the charging port facing up.
- Lift the stand straight up to remove it.

## Step 7 — Remove the right faceplate



- Flip the device over so that the USB and ethernet ports are on the left side from your perspective.
- Lift up the corner of the faceplate to unclip it from the case.

## Step 8



- While lifting up the corner, slide the faceplate towards the bottom of the device.
- Remove the right faceplate.

## Step 9 — Remove the SSD cover screw



- Use a Phillips screwdriver to remove the 17 mm-long SSD cover screw.

## Step 10 — Remove the SSD cover



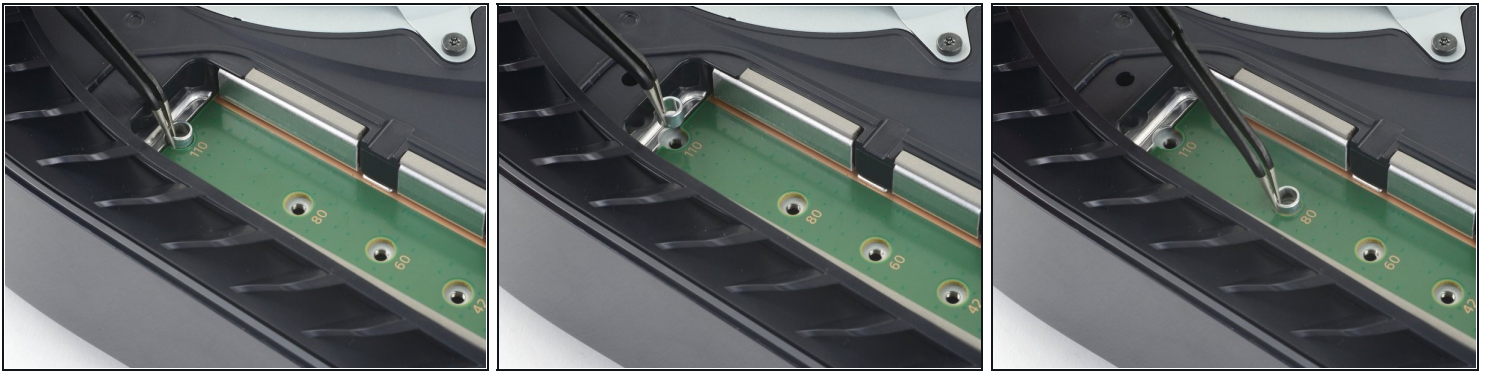
- Use your finger to slide the SSD cover towards the top of the device to unclip it from the case.
- Remove the SSD cover.

## Step 11 — Remove the SSD screw



- Use a Phillips screwdriver to remove the 11 mm-long SSD screw.

## Step 12 — Move the spacer



- Use a pair of tweezers to lift and move the spacer to the appropriate slot for your chosen M.2 SSD.

**⚠ Do not attempt to install the SSD without the spacer in the proper location.**

## Step 13 — Insert the SSD



- If your SSD will benefit from a heat sink, [follow this guide](#) to install one.
- Insert your SSD at a shallow angle into the M.2 socket.
  - ① Both the SSD and M.2 socket are keyed, which means the SSD only fits one way into the socket.
  - ① It is normal for the SSD to rest at an angle once it has been inserted into the M.2 socket.

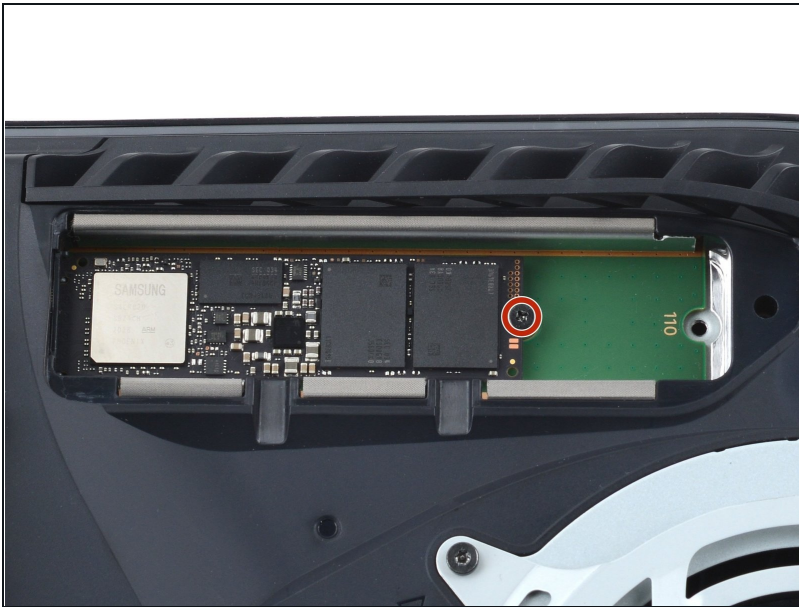


## Step 14 — Secure the SSD to the motherboard



- Use your finger to press the SSD down until the end sits atop the spacer.
- With the SSD on the spacer, insert the SSD screw through the spacer and screw it into place, securing the end of the SSD.

## Step 15



- Use a Phillips screwdriver to tighten the 11 mm-long screw to the end of the SSD.  
**⚠ Do not overtighten this screw. Doing so may damage the SSD.**

To reassemble your device, follow these instructions in reverse order.

Take your e-waste to an [R2 or e-Stewards certified recycler](#).

Repair didn't go as planned? Try some [basic troubleshooting](#), or ask our [PlayStation 5 Answers community](#) for help.

