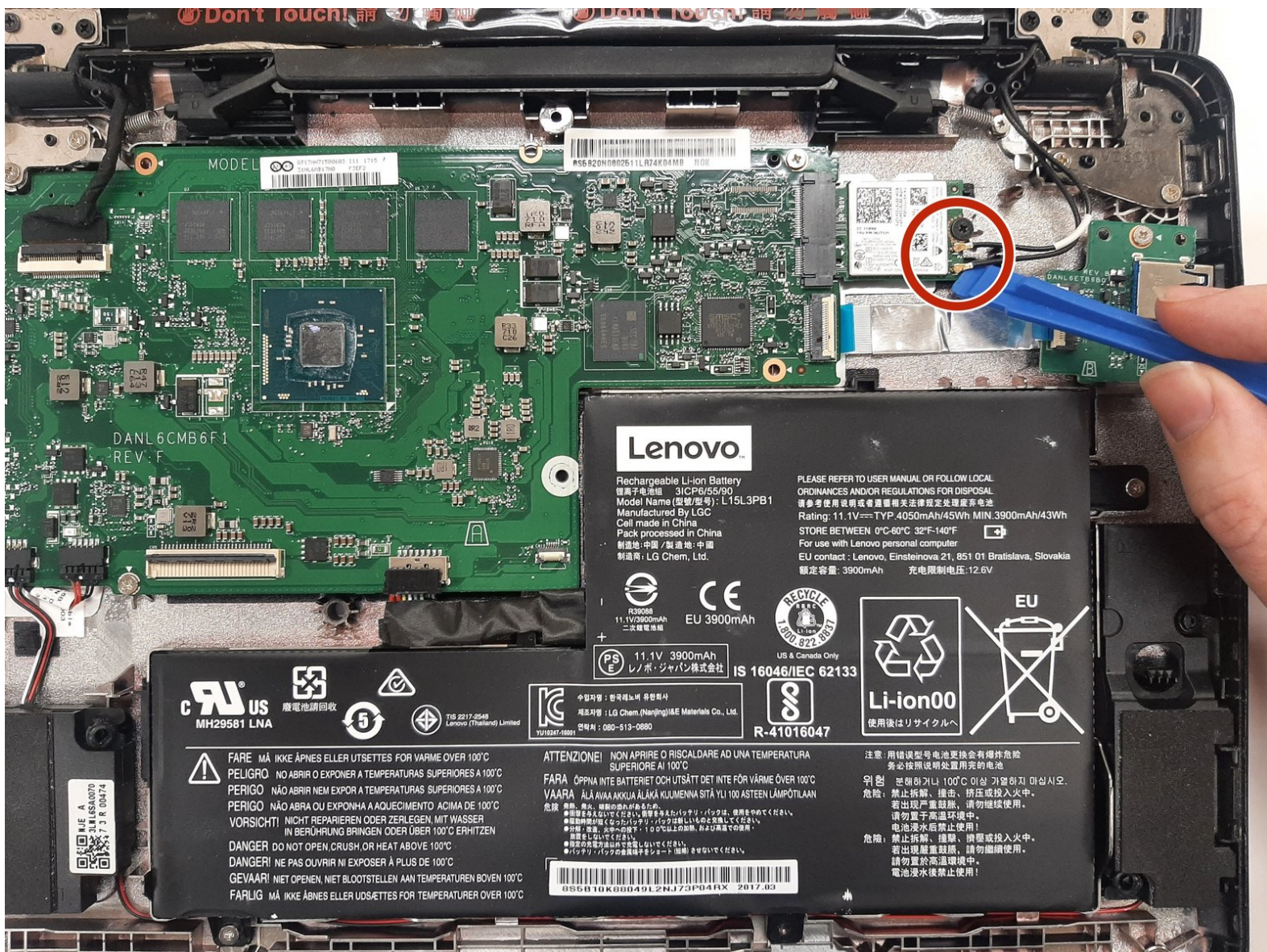




Lenovo N23 Chromebook Wi-Fi Card Replacement

This repair guide will assist users in efficiently replacing the wifi card of a Lenovo N23 Chromebook.

Written By: Jarod Ostir



INTRODUCTION

If your Lenovo N23 Chromebook wont connect to wifi, follow this guide to replace the wifi card.

The wifi card allows the laptop to connect to the internet. A faulty wifi card will not allow the laptop to connect to the internet or will allow intermittent or unreliable connection.

Before using this guide, try following an internet connectivity issues troubleshooting guide. If the laptop still does not connect to the internet, that indicates that there may be a problem with the wifi card.

No special skills are required to follow this guide.



TOOLS:

- [Phillips #0 Screwdriver](#) (1)
 - [iFixit Opening Tool](#) (1)
-

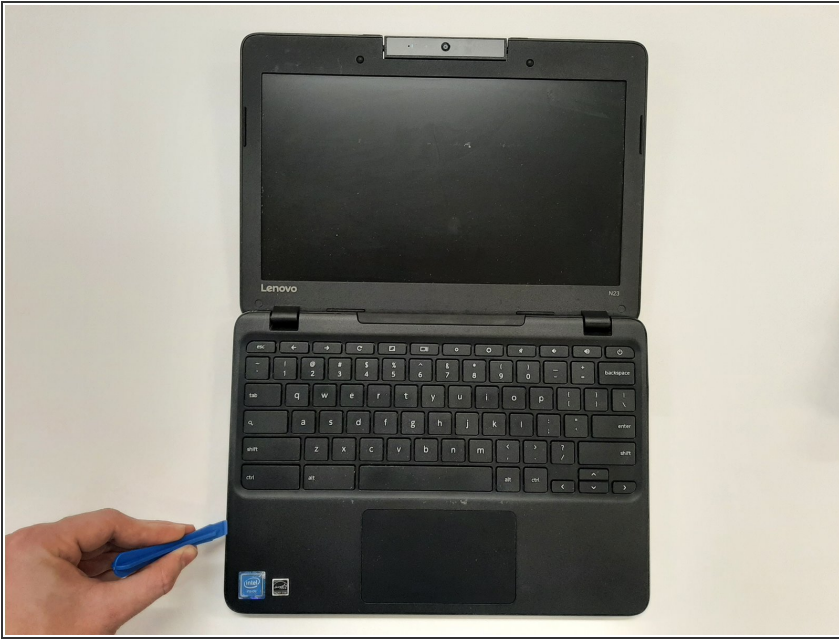
Step 1 — Battery



⚠ Before starting, make sure that the laptop is powered off and completely unplugged from the charger.

- Remove the eight 6.0 mm screws holding the back into place using a Phillips #0 screwdriver.

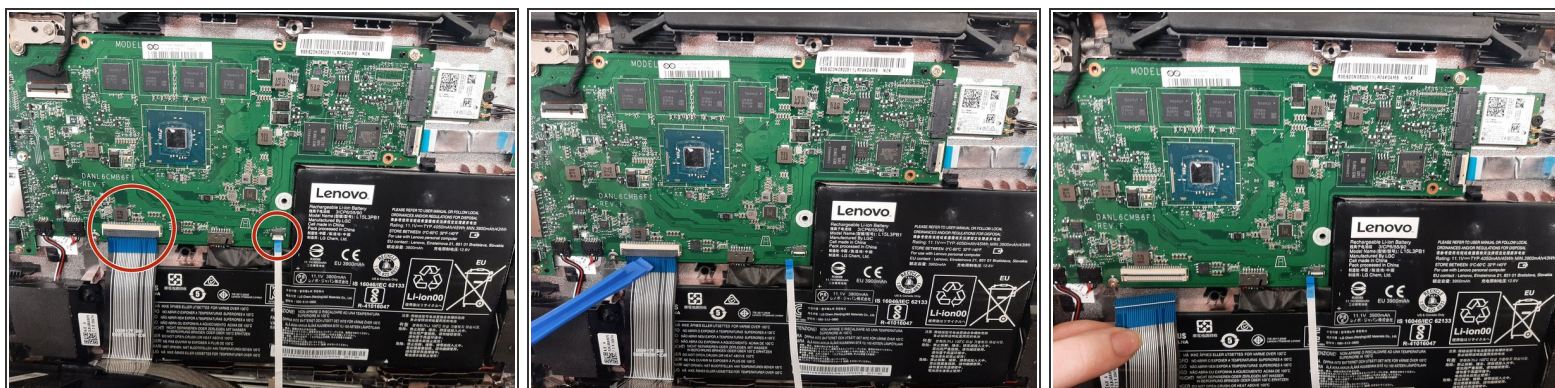
Step 2




- Flip the device over.
- Slide a plastic opening tool between the back cover and keyboard.
- Carefully pry upwards until you hear a click.
- Following the seam, slide the opening tool all the way around the front cover, prying upwards occasionally until the keyboard and trackpad are loose from the back cover.
- Lift the keyboard panel up to reveal the internals.

⚠ Don't lift the keyboard panel too violently, as there is still a cable attachment to the motherboard.

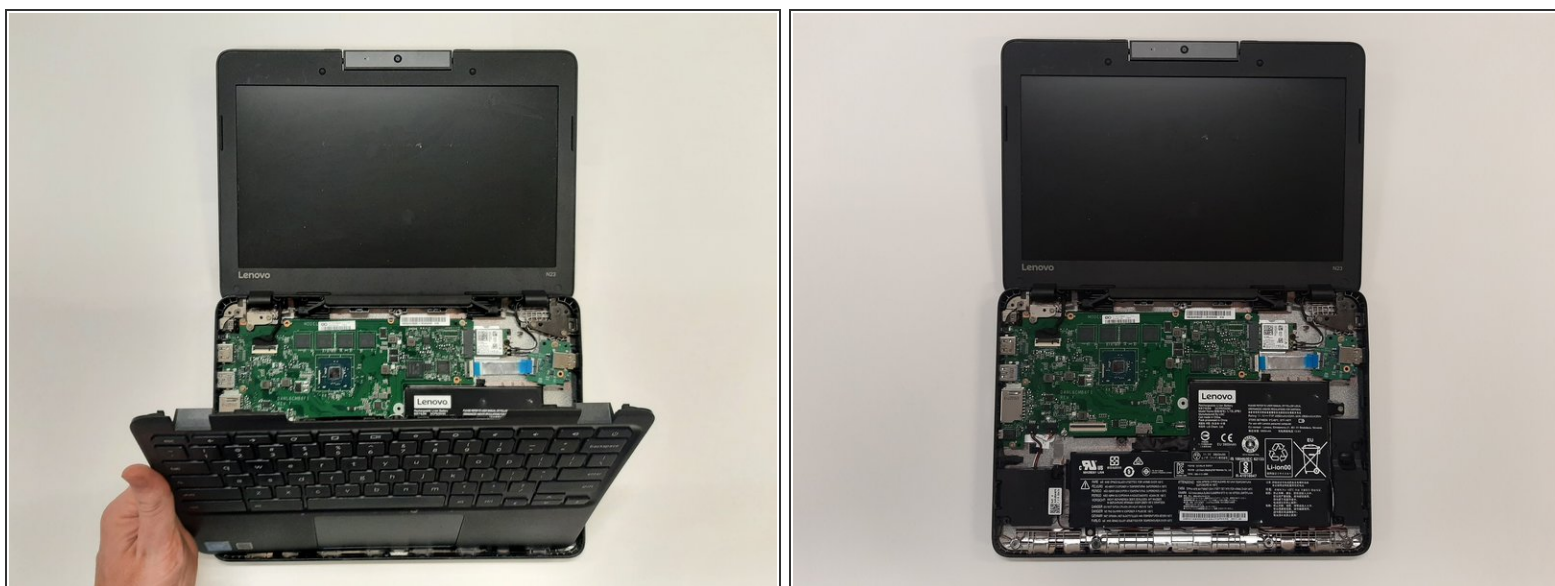
Step 3



 You can now access the internals of the computer.

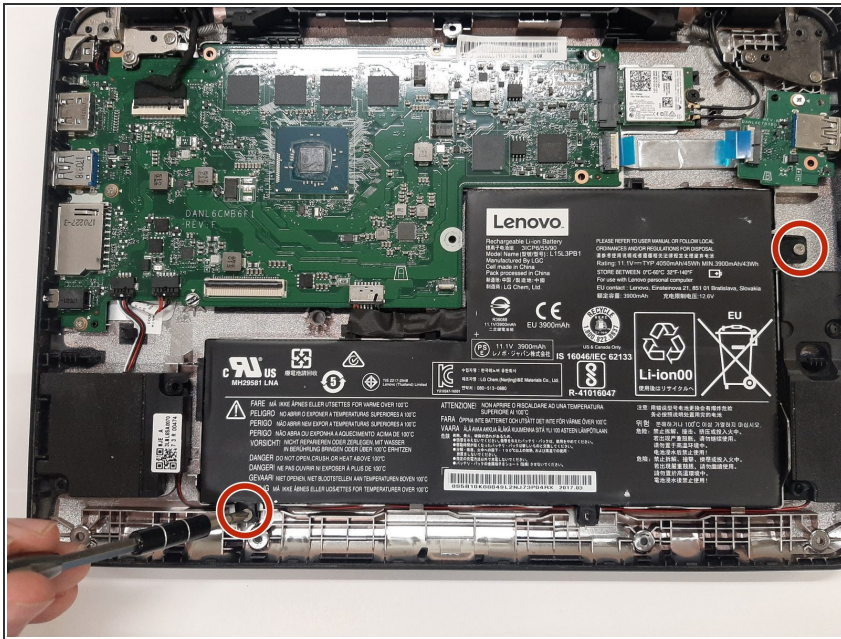
- Disconnect the two ribbon cables that connect from the motherboard to the front cover.
- Using the iFixit opening tool, flip up the black tab holding keyboard ribbon cable and then pull the cable out.
- Using the opening tool, flip the white tab holding the mouse ribbon cable and then pull the cable out.

Step 4



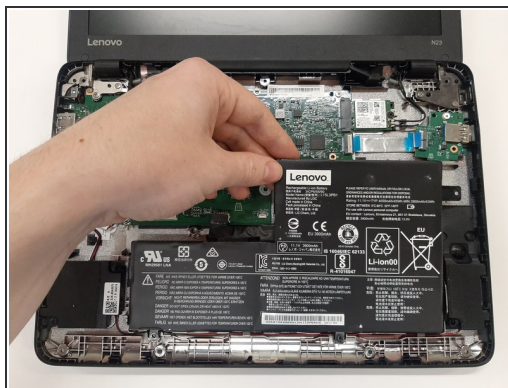
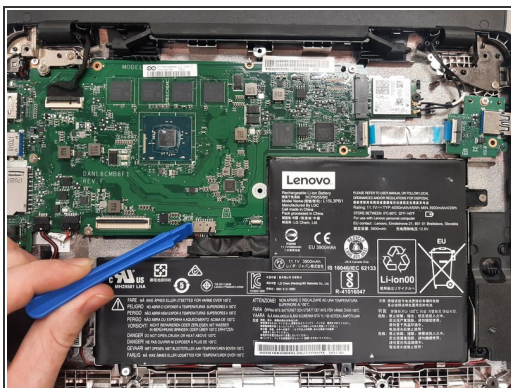
- Lift the keyboard panel from the case and fully remove it from the device.

Step 5



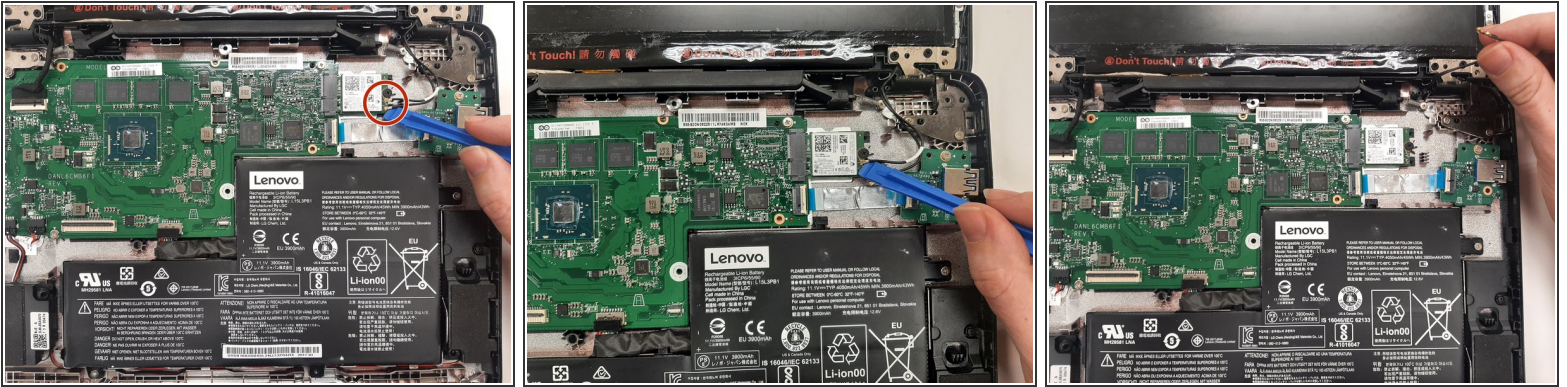
- Using the Phillips #0 screwdriver, remove the two 3 mm screws holding the battery in place.

Step 6



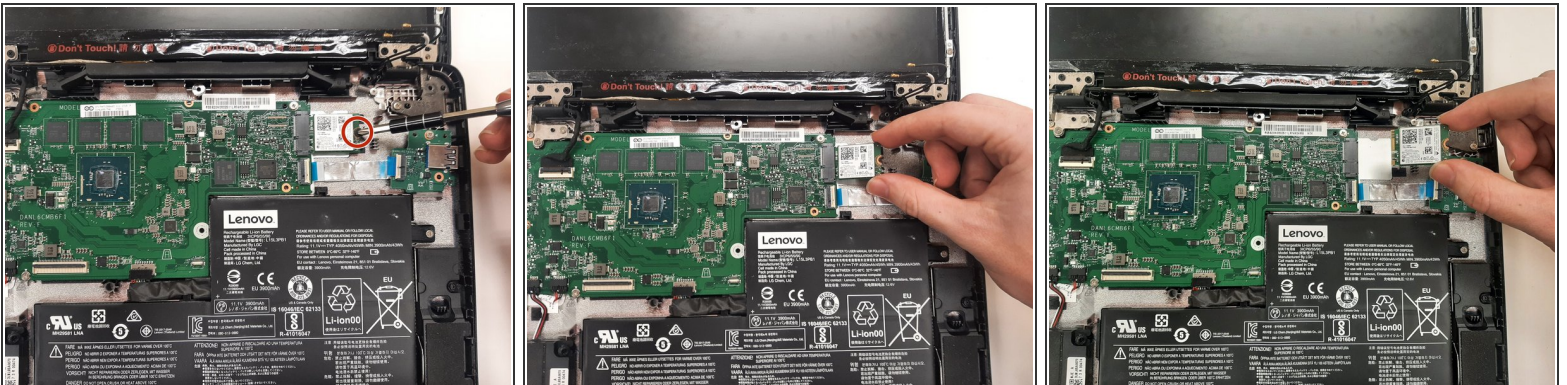
- Disconnect the battery cable using a plastic opening tool by pulling on the black plastic lip.
- Lift the battery out of the laptop.

Step 7 — Wifi Card



- Use a plastic opening tool to disconnect the two coaxial cables from the Wi-Fi card.
- Tuck the two wires out of the way.

Step 8



- Remove the single 3.0 mm Phillips #1 screw holding the Wi-Fi card using a Phillips #1 screwdriver.
- Using your hands, carefully pull the Wi-Fi card sideways out of the port on the motherboard.

To reassemble your device, follow these instructions in reverse order.