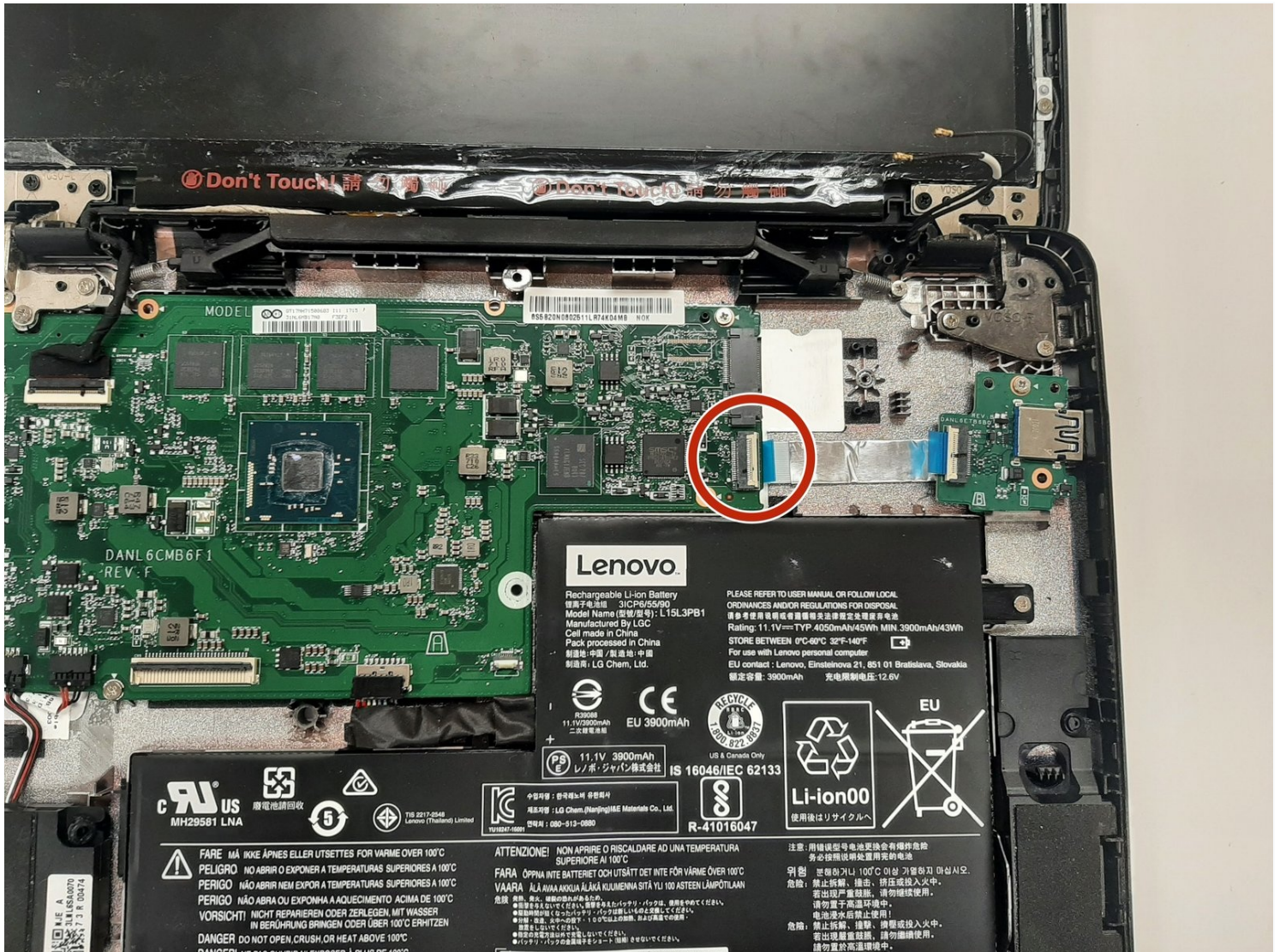




Lenovo N23 Chromebook Motherboard Replacement

How to replace the Lenovo N23 Chromebook...

Written By: Josh Keating



INTRODUCTION

How to replace the Lenovo N23 Chromebook motherboard

TOOLS:


Phillips #0 Screwdriver (1)
iFixit Opening Tool (1)

PARTS:

5B20N08025 - Lenovo Laptop
Motherboard - Genuine (1)

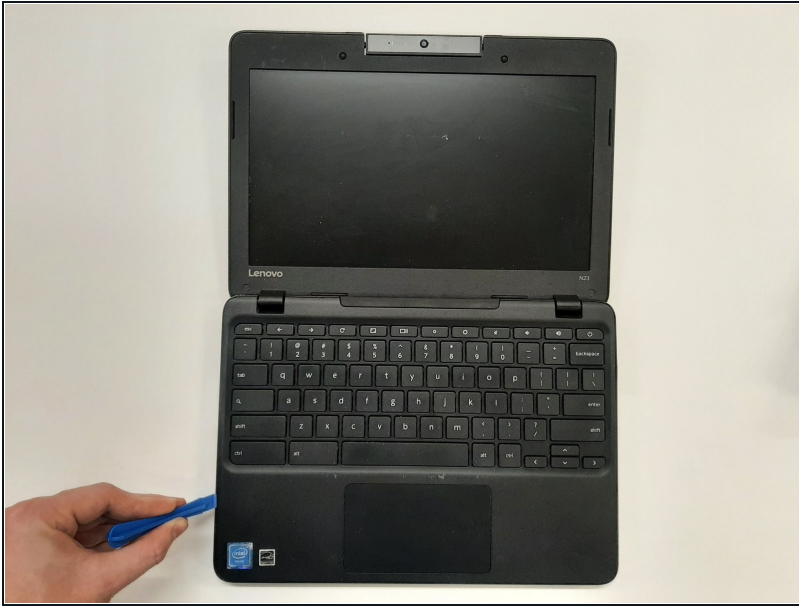
Step 1 — Battery



 Before starting, make sure that the laptop is powered off and completely unplugged from the charger.

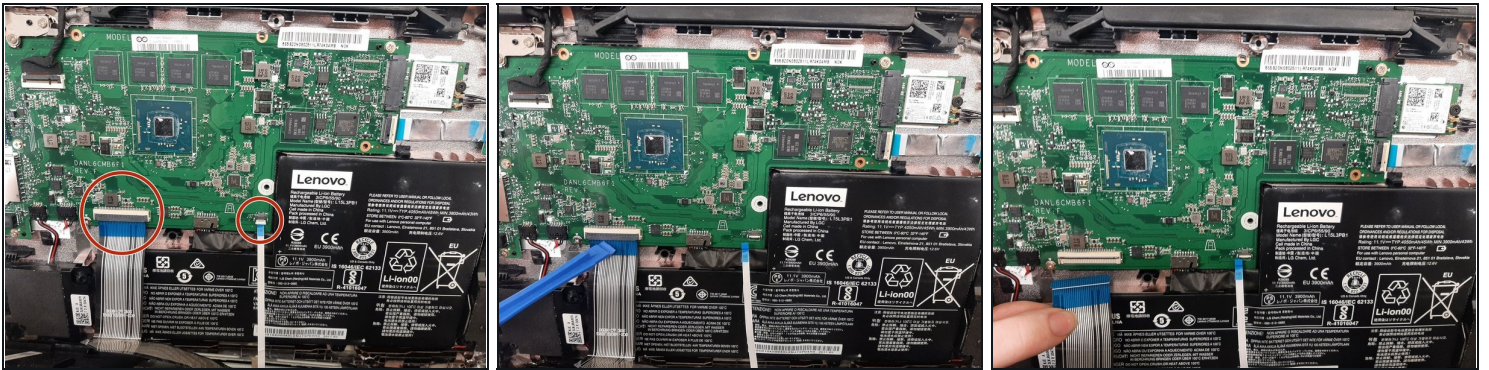
- Remove the eight 6.0 mm screws holding the back into place using a Phillips #0 screwdriver.

Step 2



- Flip the device over.
 - Slide a plastic opening tool between the back cover and keyboard.
 - Carefully pry upwards until you hear a click.
 - Following the seam, slide the opening tool all the way around the front cover, prying upwards occasionally until the keyboard and trackpad are loose from the back cover.
 - Lift the keyboard panel up to reveal the internals.
- ⚠ Don't lift the keyboard panel too violently, as there is still a cable attachment to the motherboard.

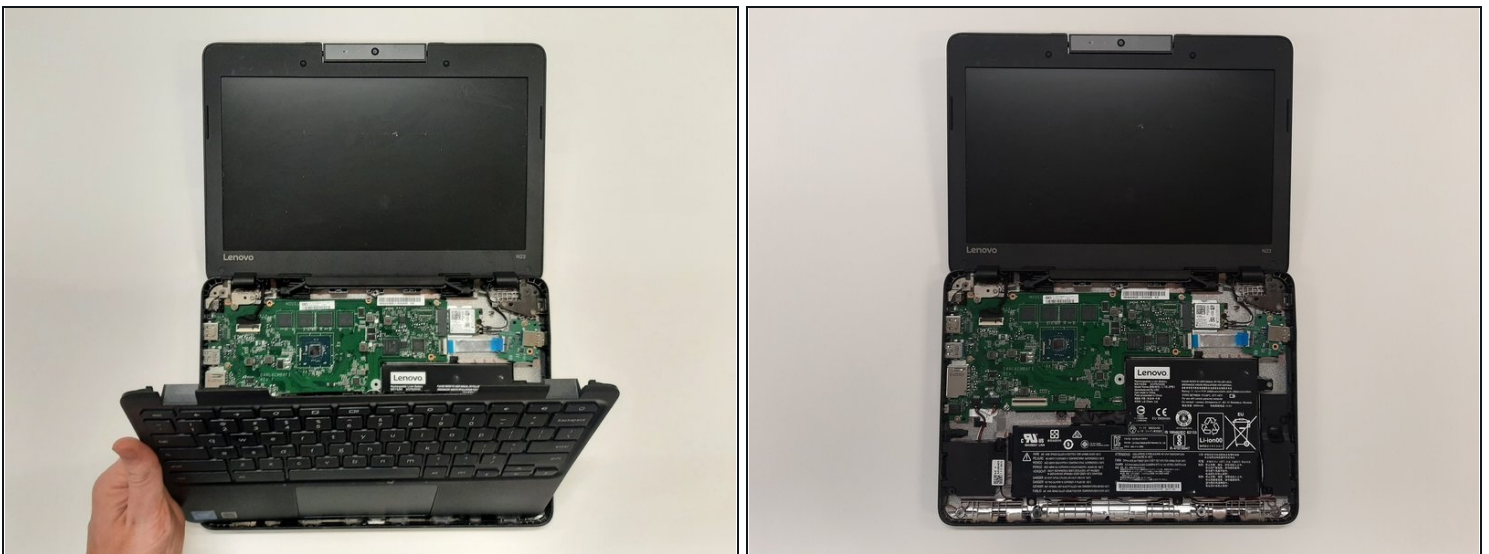
Step 3



① You can now access the internals of the computer.

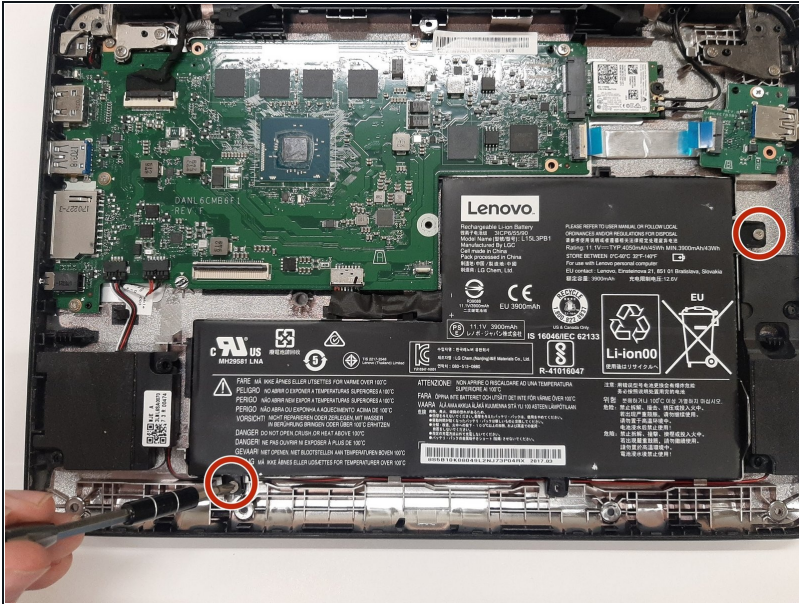
- Disconnect the two ribbon cables that connect from the motherboard to the front cover.
- Using the iFixit opening tool, flip up the black tab holding keyboard ribbon cable and then pull the cable out.
- Using the opening tool, flip the white tab holding the mouse ribbon cable and then pull the cable out.

Step 4



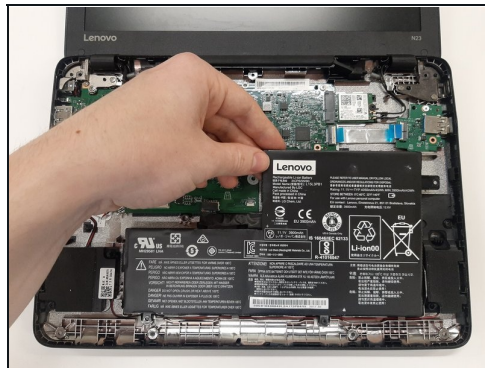
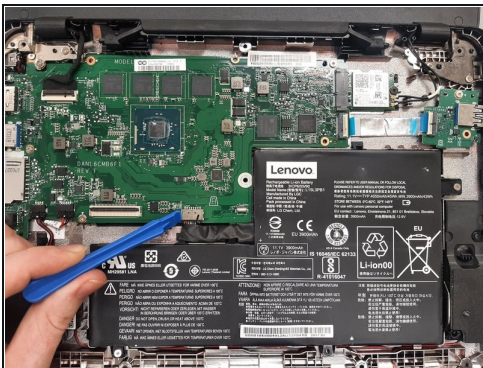
- Lift the keyboard panel from the case and fully remove it from the device.

Step 5



- Using the Phillips #0 screwdriver, remove the two 3 mm screws holding the battery in place.

Step 6



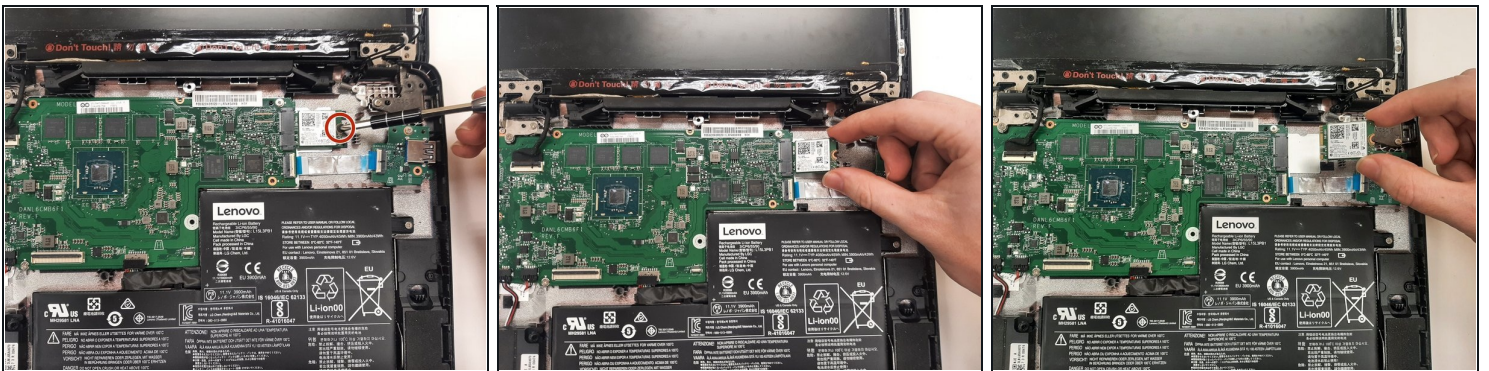
- Disconnect the battery cable using a plastic opening tool by pulling on the black plastic lip.
- Lift the battery out of the laptop.

Step 7 — Wifi Card



- Use a plastic opening tool to disconnect the two coaxial cables from the Wi-Fi card.
- Tuck the two wires out of the way.

Step 8



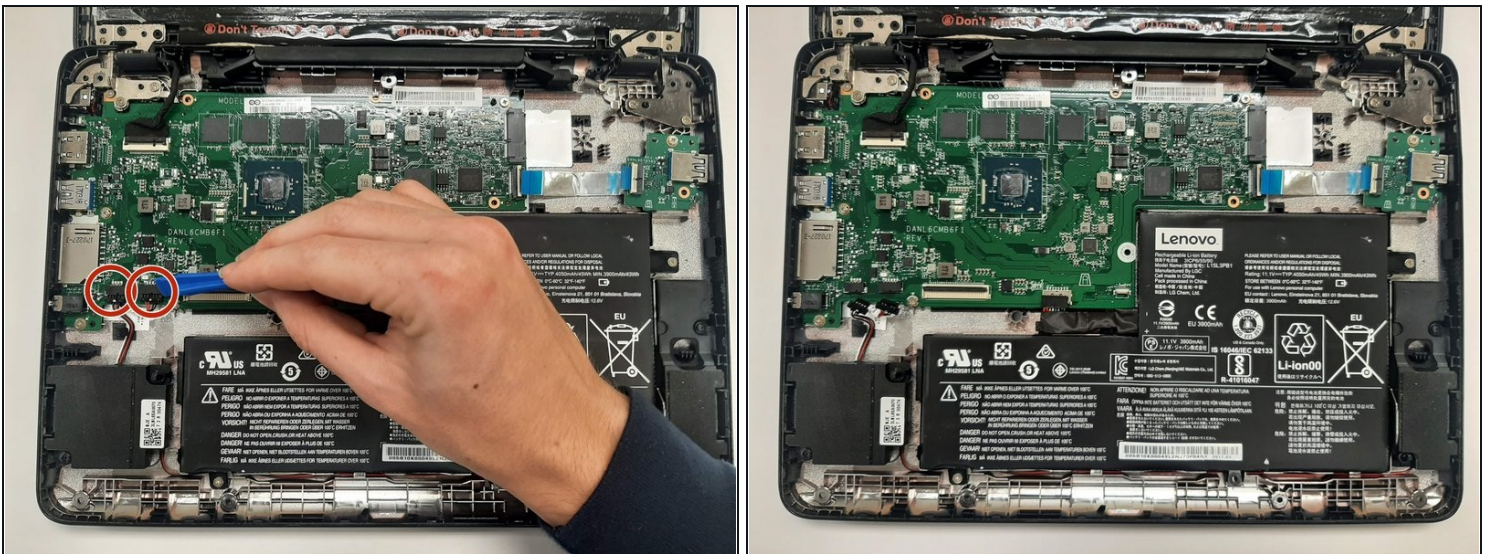
- Remove the single 3.0 mm Phillips #1 screw holding the Wi-Fi card using a Phillips #1 screwdriver.
- Using your hands, carefully pull the Wi-Fi card sideways out of the port on the motherboard.

Step 9 — Motherboard



- Remove the USB ribbon cable by lifting up on the white tab using a plastic opening tool and then pulling the cable out.

Step 10



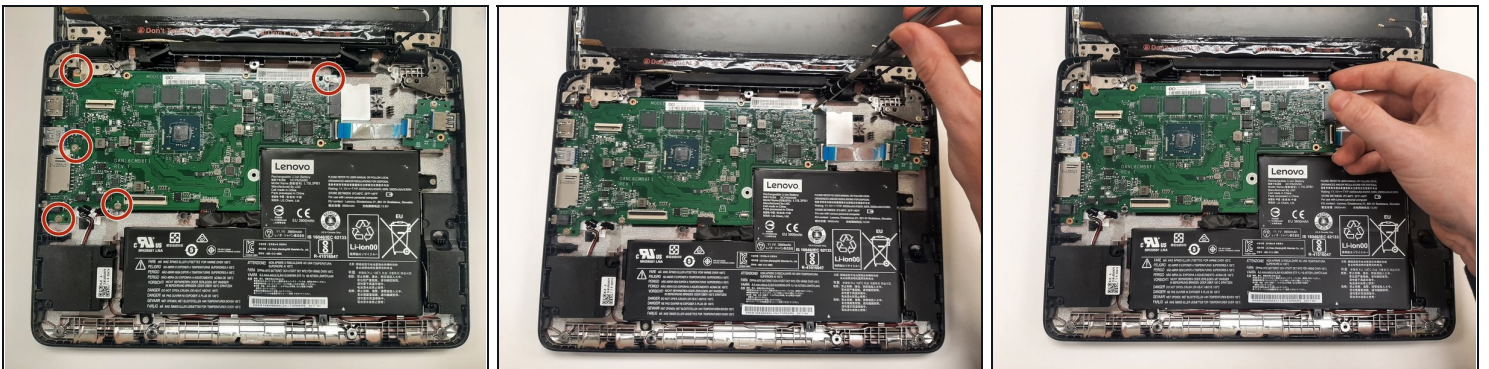
- Disconnect the two black connectors on the bottom left side of the motherboard by pulling back on the lip with a plastic opening tool.

Step 11



- Disconnect the video cable by lifting upwards on the black tab using a plastic opening tool and pulling the cable out.

Step 12



- Remove the five 3.0 mm screws that hold the motherboard in place with a Phillips #0 screwdriver.
- Lift the motherboard carefully out of the laptop, being sure to not let it get caught on any cables.

To reassemble your device, follow these instructions in reverse order.