



LG Incite Motherboard Replacement

If your phone's motherboard is faulty, this...

Written By: Kimberly Kha



INTRODUCTION

If your phone's motherboard is faulty, this guide will show you how to safely replace it.

TOOLS:

[iFixit Opening Tool](#) (1)
[Tweezers](#) (1)
[Phillips #00 Screwdriver](#) (1)

PARTS:

[LG Incite CT810 motherboard](#) (1)

Step 1 — Battery



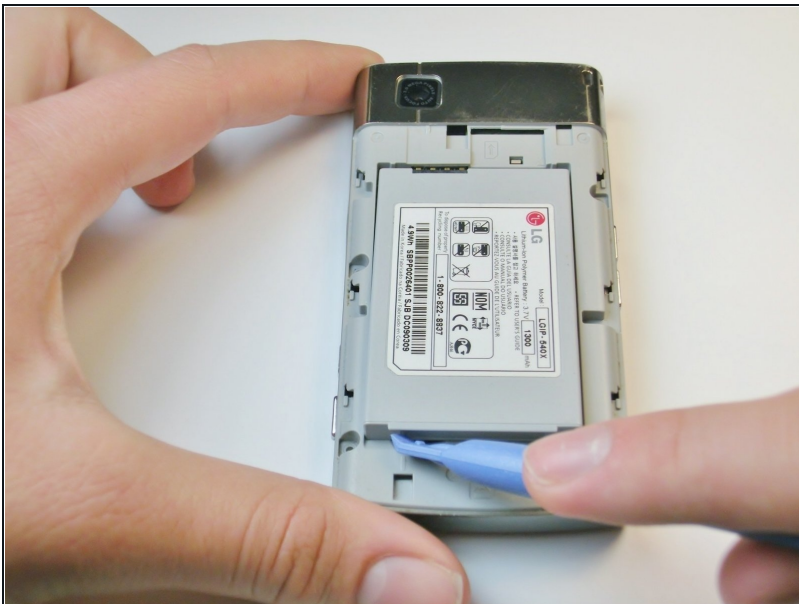
- Hold the phone camera-side up and locate the rear cover.

Step 2



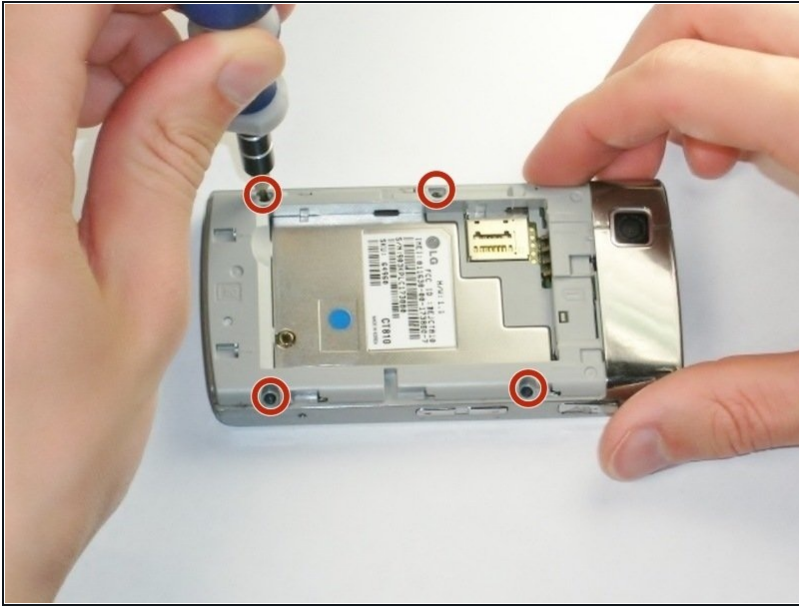
- Place a thumb below the camera, apply a little pressure, and slide the cover toward the bottom of the phone.

Step 3



- Place the plastic opening tool in the small slot below and to the left of the battery.
- Pry the battery upward to remove it.

Step 4 — Back Panel



- Using the #00 Philips screw driver, unscrew the four 4.5mm screws located around the battery compartment.

Step 5



- Wedge the plastic opening tool between the screen and the body of the device, using care to avoid damaging internal components.
- Gently move the tool around the perimeter of the screen to separate it from the body.
- ① You should not completely separate the screen from the device in this step.

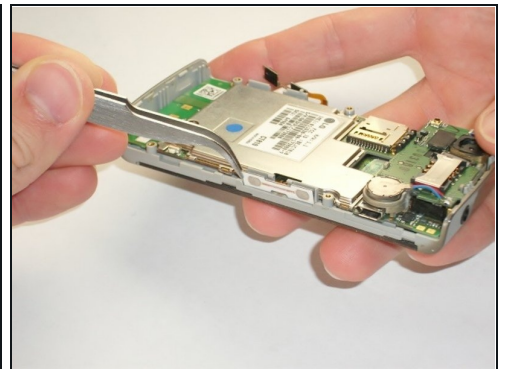
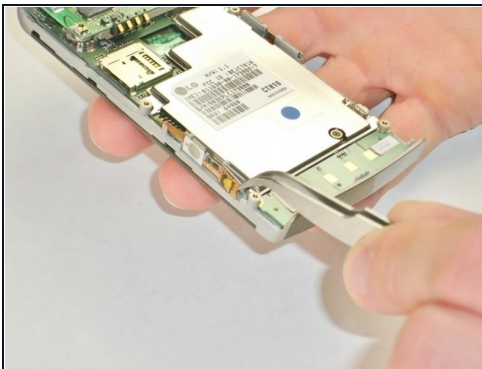
Step 6



- Flip the device over so the battery compartment faces up.
- Press the scroll wheel, located in the upper-left corner, into the device to avoid damage.
- Gently insert the plastic opening tool into the seam between the frame and front cover to separate the back panel from the device.

⚠ The volume, lock, and camera buttons are loose, so be careful not to misplace them.

Step 7 — Motherboard



- Use the metal [tweezers](#) to gently peel the yellow tab from the left edge of the phone at the two plastic bases.
 - ⚠ Do not completely remove the tab from the body, it should still be connected to the phone by the orange plastic.
- Repeat this for the white tab on the opposite side of the phone.
 - ⓘ This tab also has two plastic bases adhering it to the edge of the phone.

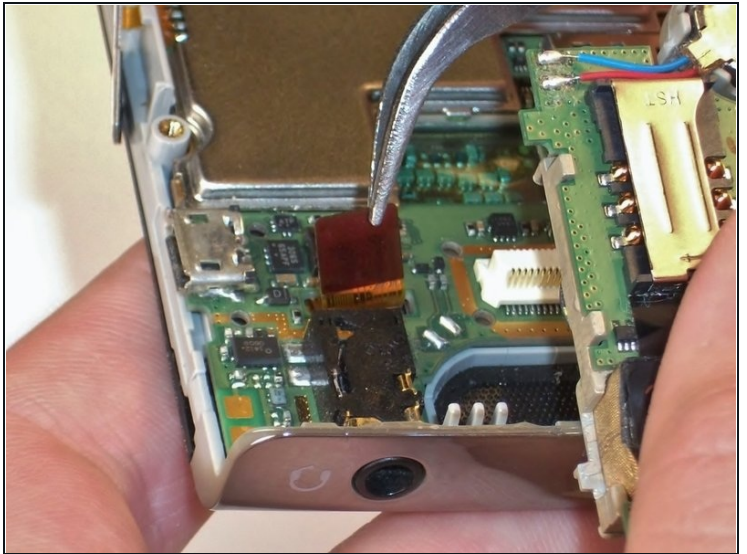
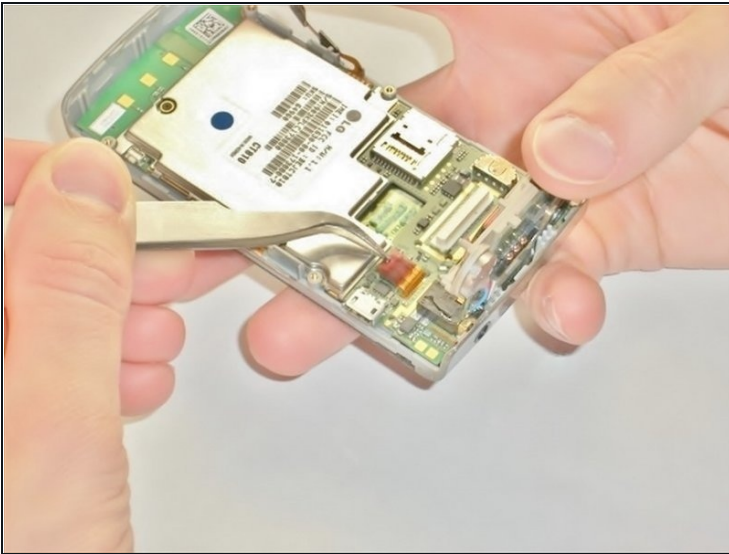
Step 8



- Insert your plastic opening tool underneath the speaker/camera panel, and gently pry it upwards.

⚠ Do not fully remove the panel! It should still be attached to the motherboard by a red and black wire.

Step 9



- Use the metal tweezers to gently lift the edge of the maroon tab, it should pop up easily.

⚠ Do not remove the tab completely, it should still be connected to the phone.

Step 10



- Insert the plastic opening tool underneath the motherboard towards the bottom edge of the phone and gently pry it from its case.
- Lift the motherboard and slide it towards you by hand to free it from the phone.

⚠ The call and end buttons may fall out when the motherboard is removed! Don't lose the buttons.

To reassemble your device, follow these instructions in reverse order.