



# 8BitDo NES30 Pro Gamepad Button Replacement

How to take apart the 8BitDo NES30 Pro gamepad and remove/replace the face buttons.

Written By: Daniel Kane



## INTRODUCTION

Use this guide to take the 8BitDo NES30 Pro Gamepad apart and replace its face buttons.

You may want to replace old buttons with a new set as they wear out over time, or maybe you just want to give your controller's existing buttons a new paint job.

This guide may also be useful if the L and R buttons on the shoulders of the controllers become jammed, meaning they become permanently pressed down. Although the shoulder buttons aren't removable, you can follow the disassembly process of this guide through Step 3 to access the shoulder buttons and pop them back to their original position.



### TOOLS:

- [Phillips #00 Screwdriver](#) (1)
  - [1 x Opening Picks](#) (1)
-

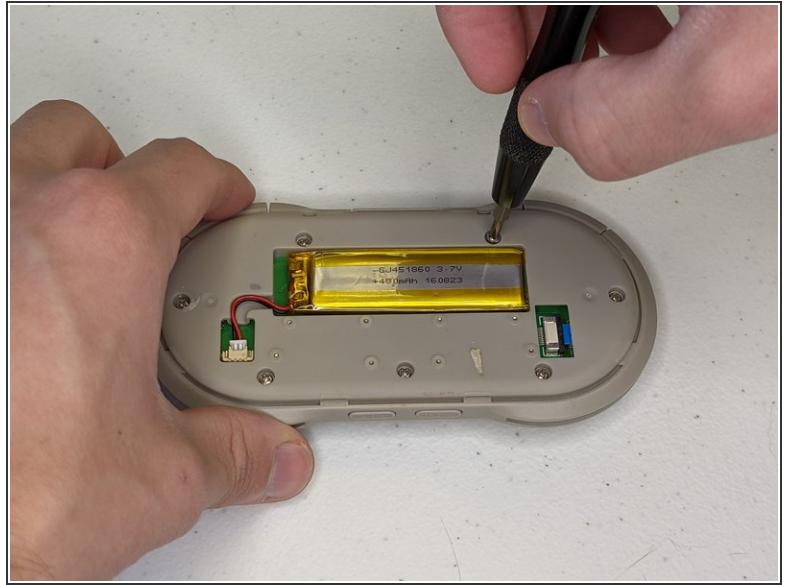
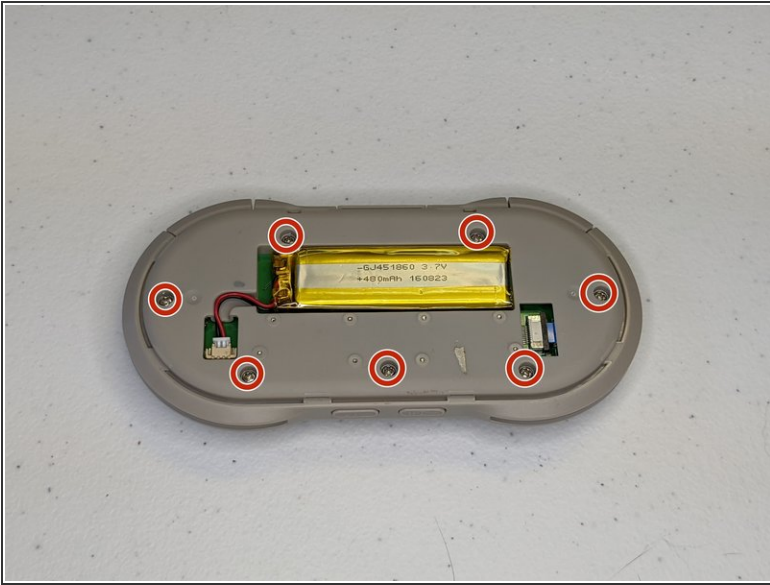
## Step 1 — Button



- Hold the controller with its back facing towards you.
- Insert an opening pick between the L1 or R1 button and the backplate, and pry the backplate off of the controller.

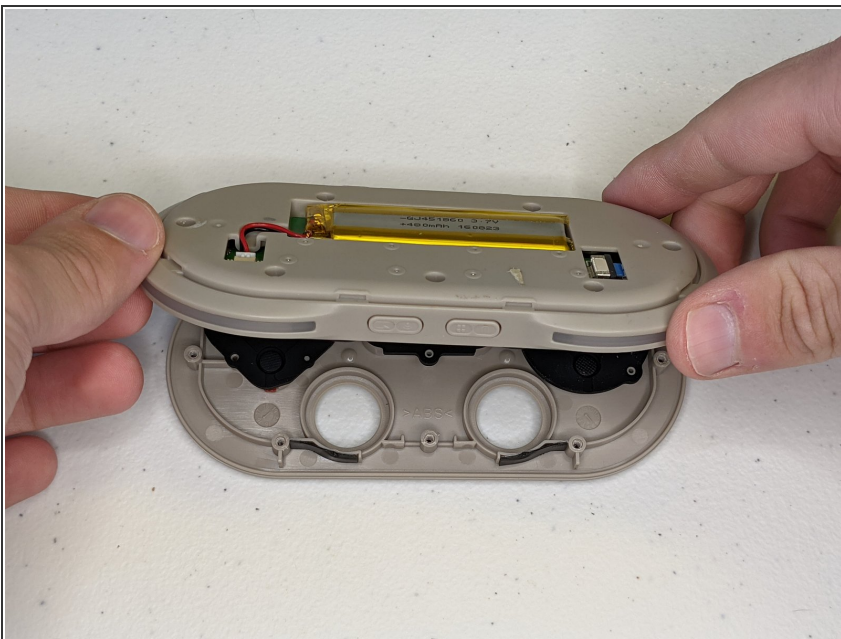


## Step 2



- Place the controller face down on a solid surface.
- Remove the seven screws with the Phillips #00 screwdriver.

## Step 3



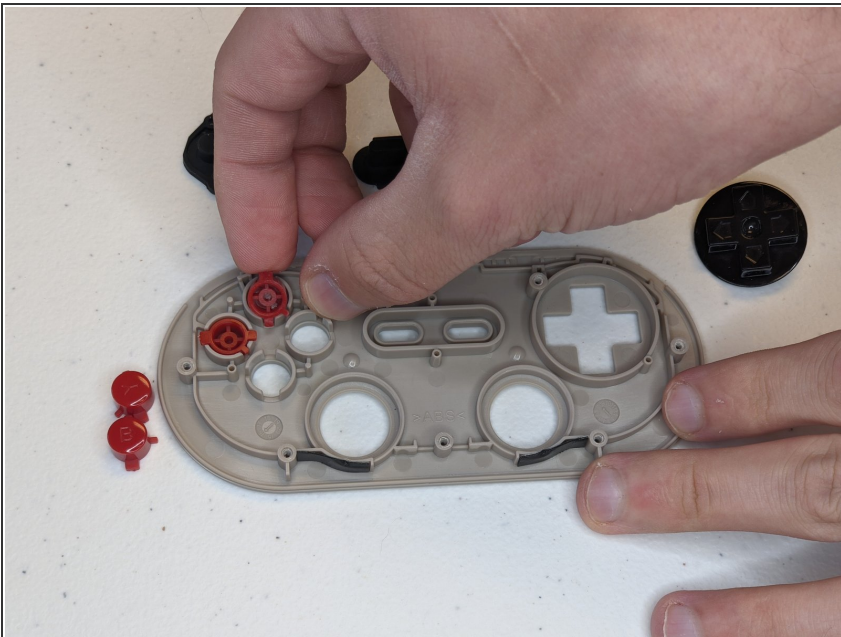
- Lift the body of the controller up and away from the controller's face and buttons.

## Step 4



- Lift away the black rubber pads that sit between the face buttons and body of the controller.

## Step 5



- Lift the buttons out of the face of the controller.

## Step 6



- Align the notches of the face buttons to put them back into place.
- ⓘ Each button has a unique notch pattern so it can't be replaced incorrectly.
- Attach the rubber pads by placing their smaller and larger holes around the matching size pegs.

To reassemble your device, follow these instructions in reverse order.