



Backbone One Phone Connector Replacement

How to replace a broken phone connector on your Backbone One.

Written By: Adriana Zwink



INTRODUCTION

Use this guide to replace a broken phone connector on your Backbone One.



TOOLS:

- [Phillips #0 Screwdriver](#) (1)
 - [ESD Safe Tweezers Blunt Nose](#) (1)
-

Step 1 — Remove the screws



- Use a Phillips screwdriver to remove the four 5.9 mm-long screws.

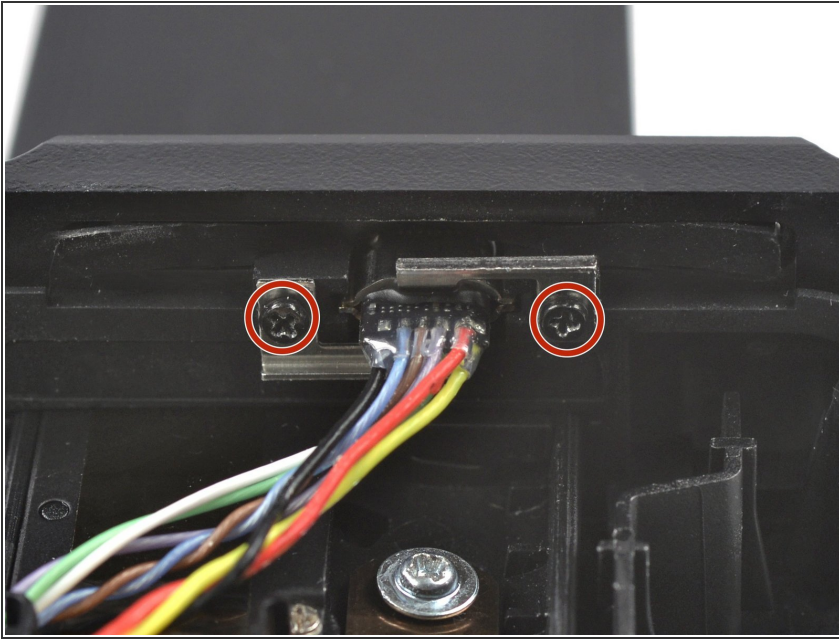
Step 2 — Rotate the upper part



- Lift up the upper cover of the controller.
- Swing the upper cover over and place it on the controller case.

⚠ Make sure that the interconnecting cable has no tension.

Step 3 — Remove the screws



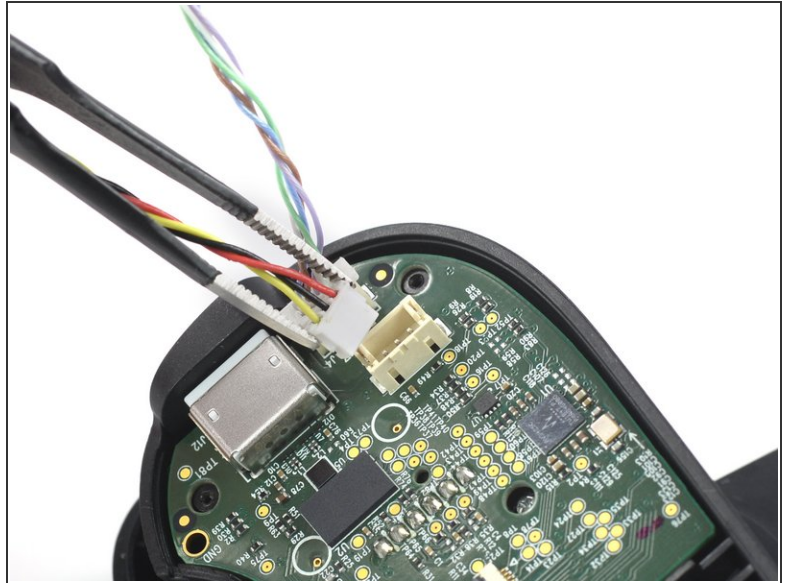
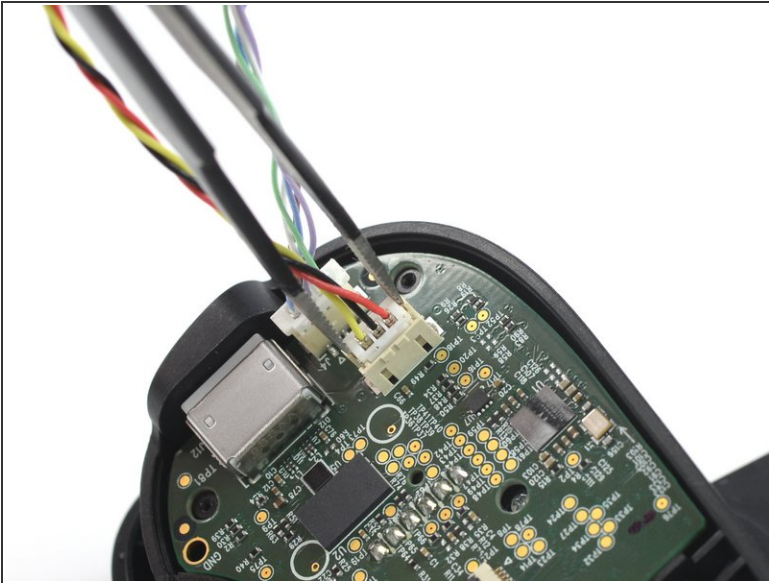
- Use a Phillips screwdriver to remove the two 4.8 mm-long screws securing the phone connector.

Step 4 — Unthread the phone connector



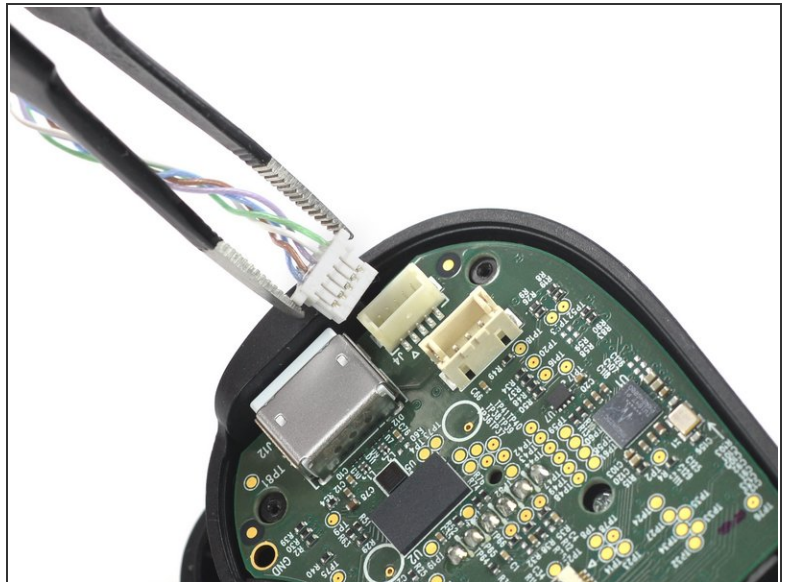
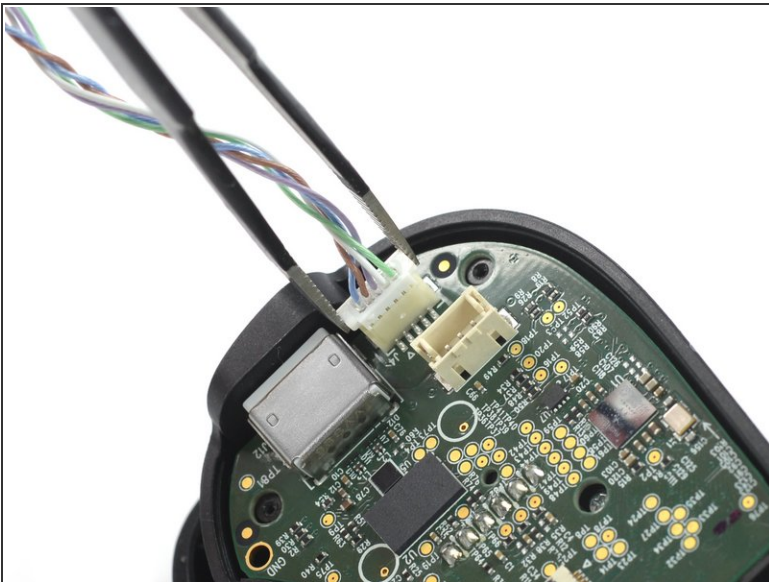
- Use your fingers to thread the phone connector through the opening in the plastic cover at the right side of the rear cover.

Step 5 — Disconnect the phone connector cable



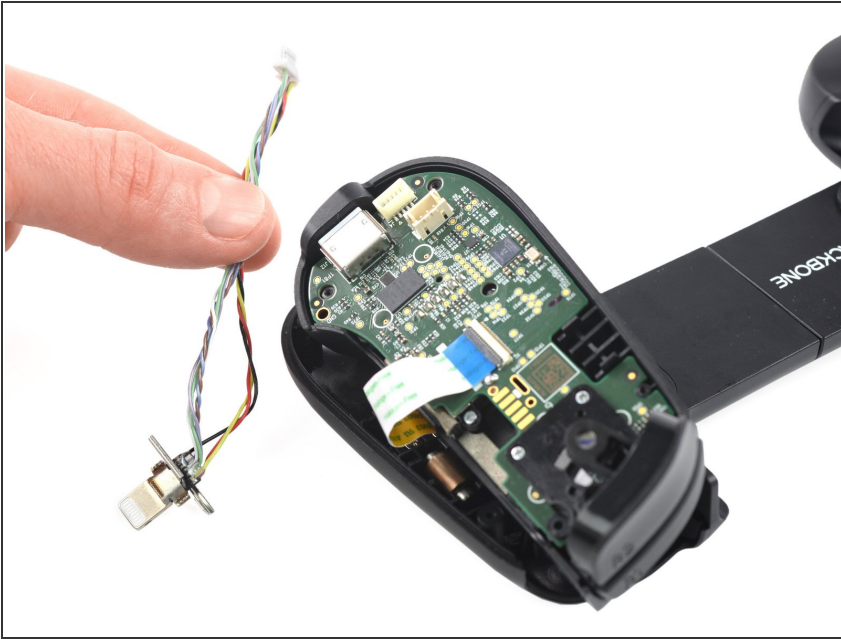
- Use a pair of tweezers to disconnect the first phone connector cable from the mainboard.

Step 6 — Disconnect the phone connector cable



- Use a pair of tweezers to disconnect the second phone connector cable from the mainboard.

Step 7 — Remove the phone connector cable



- Remove the phone connector cable.

To reassemble your device, follow these instructions in reverse order.

Take your e-waste to an [R2 or e-Stewards certified recycler](#).

Repair didn't go as planned? Ask our [Answers community](#) for help.