



2016 Nissan Versa Brake Light Replacement

This guide will show you how to replace the brake lights in the 2016 Nissan Versa.

Written By: Abdi Ahmed



INTRODUCTION

Use this guide to replace your brake light for 2016 Nissan Versa.

Brake lights are compulsory safety component of your car and are legally required to be functioning whenever your vehicle is operational. This guide will provide an easy-to-follow instructions to replace this vital safety component.

Before beginning, make sure to switch off your car.

In step 5, you will need to begin prying the lens from the tip before pulling it out completely. It will be the same when you are putting the lens back on. You will need to snap the plastic tip in first in step 11 before pushing the rest of the lens in.



TOOLS:

- [6-in-1 Screwdriver](#) (1)
 - [Socket Wrench](#) (1)
 - [Socket 10mm](#) (1)
 - [Phillips #3 Screwdriver](#) (1)
-

Step 1 — Brake Light



- Turn off the vehicle and let it cool down for 10 minutes.
- Open the trunk.

Step 2



- Remove the two plastic pins holding the plastic trunk cover using the flathead screwdriver.

Step 3



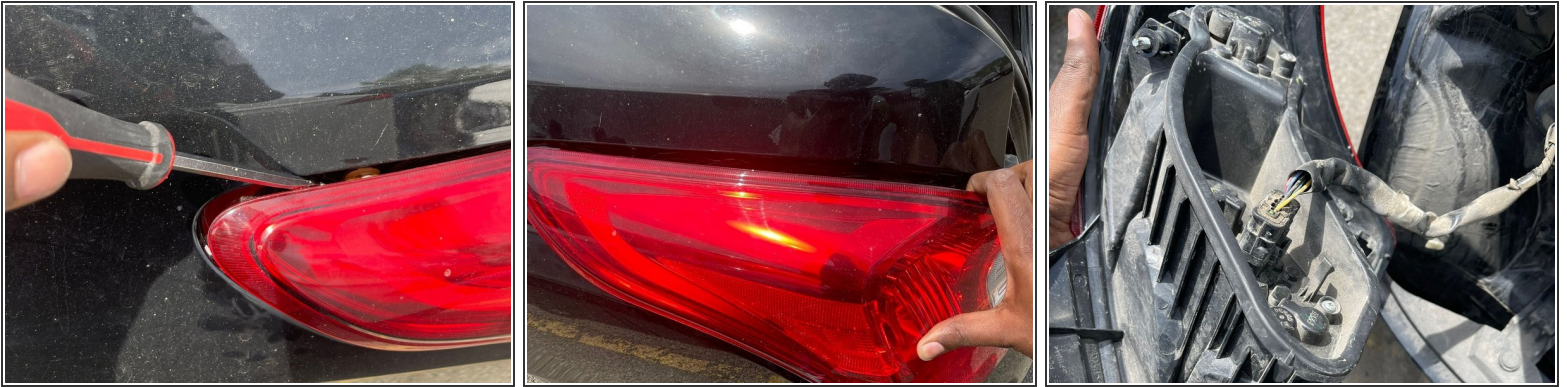
- Peel away the trunk cover to reveal the two bolts holding the lights.

Step 4



- Using the 10 mm socket and socket wrench, remove the two bolts holding the lens.

Step 5



- Gently pry open the lens using the flathead screwdriver.
- Using your hands, pull away the lens slowly.
- ⓘ Don't use too much force to pull the lens out as it may disconnect the electric cord or break the lens.

Step 6



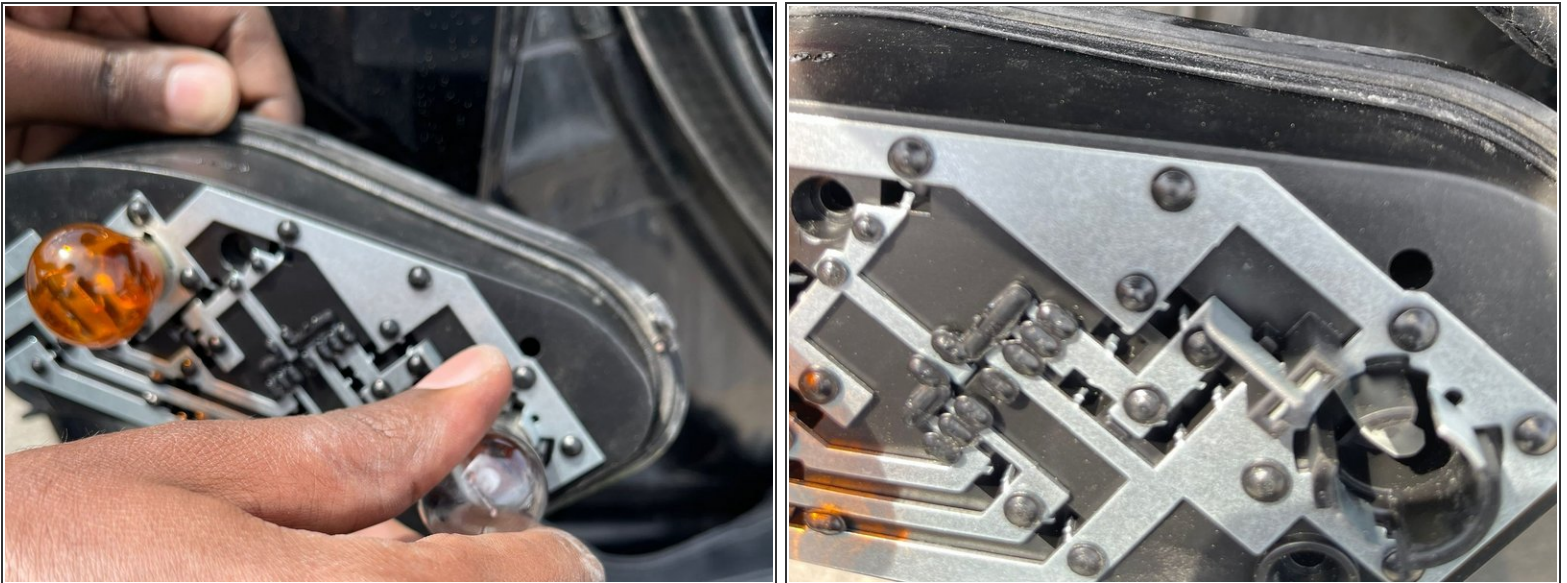
- Using the Phillips #3 screwdriver, remove the two screws holding the bulbs.

Step 7



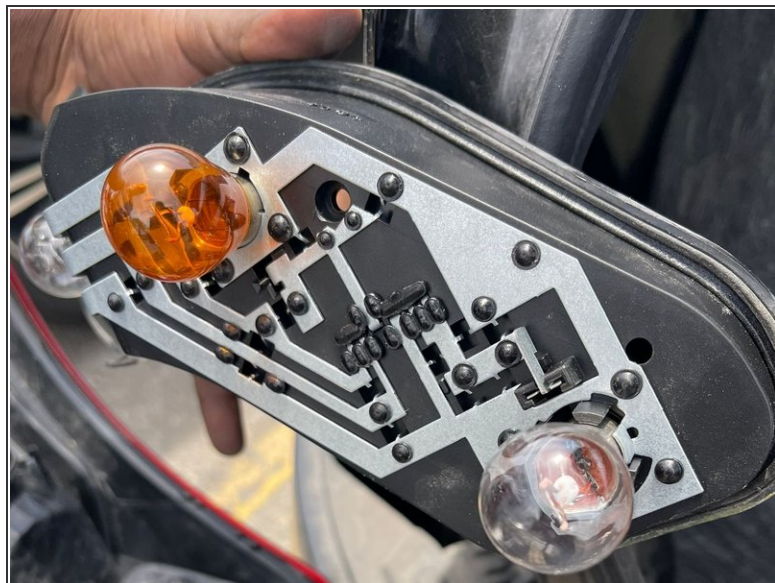
- Gently take out the inner cover holding the bulbs.
- ⓘ Use both hands when separating the lens from the bulbs. Use one hand to hold the inner cover of the bulbs while the other holds the lens.

Step 8



- Take out the brake bulb by pushing it down and turning it counter-clockwise at the same time.

Step 9



- Put the new brake light in and secure it by pushing it down and turning it clockwise.
- Test the new light by turning the car on before moving to the next step.

 **Don't forget to switch off the car once you finish testing the light.**

To reassemble your device, follow these instructions in reverse order.