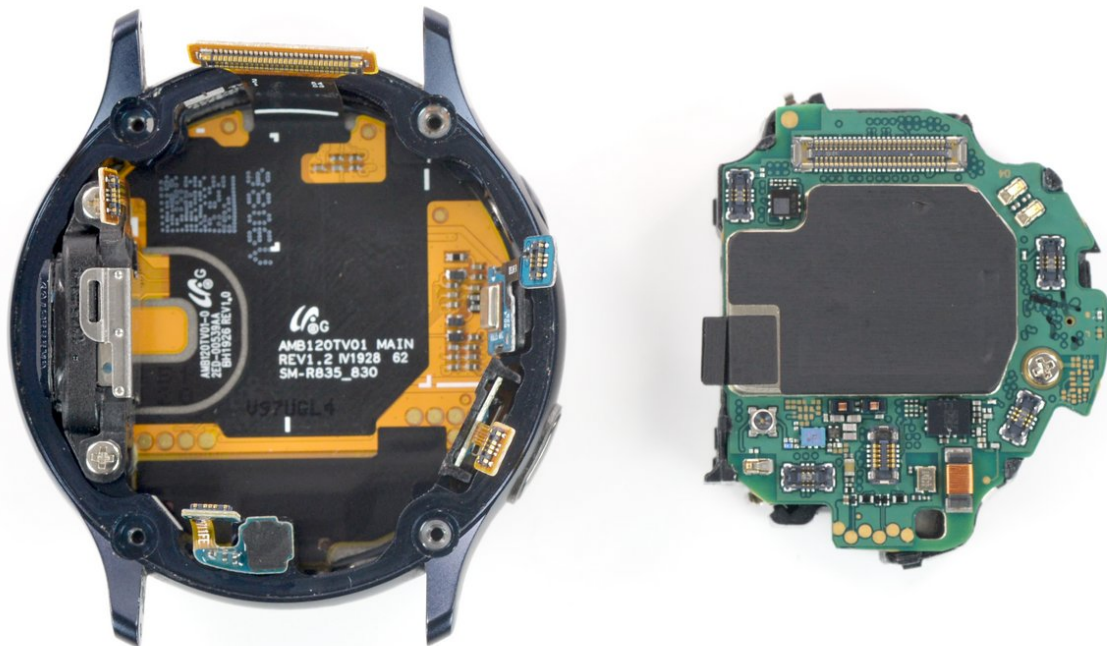




Galaxy Watch Active2 Core Assembly Removal

How to remove the core assembly in your Samsung Galaxy Watch Active2.

Written By: Tobias Isakeit



INTRODUCTION

Use this guide to remove the core assembly in your Samsung Galaxy Watch Active2.



TOOLS:

- [Tri-point Y00 Screwdriver](#) (1)
 - [iFixit Opening Picks \(Set of 6\)](#) (1)
 - [Spudger](#) (1)
-

Step 1 — Turn off the watch



- Turn off the Galaxy Watch Active2 by pushing and holding the bottom button for approximately 3 seconds. You should feel a short vibration.
- When the "Power off" symbol appears, tap the center of the screen to make it shut down. You should feel a longer vibration for confirmation.

Step 2 — Remove the rear screws



- Use a Tri-point Y00 screwdriver to remove the four 4 mm-long screws on the back of the watch.

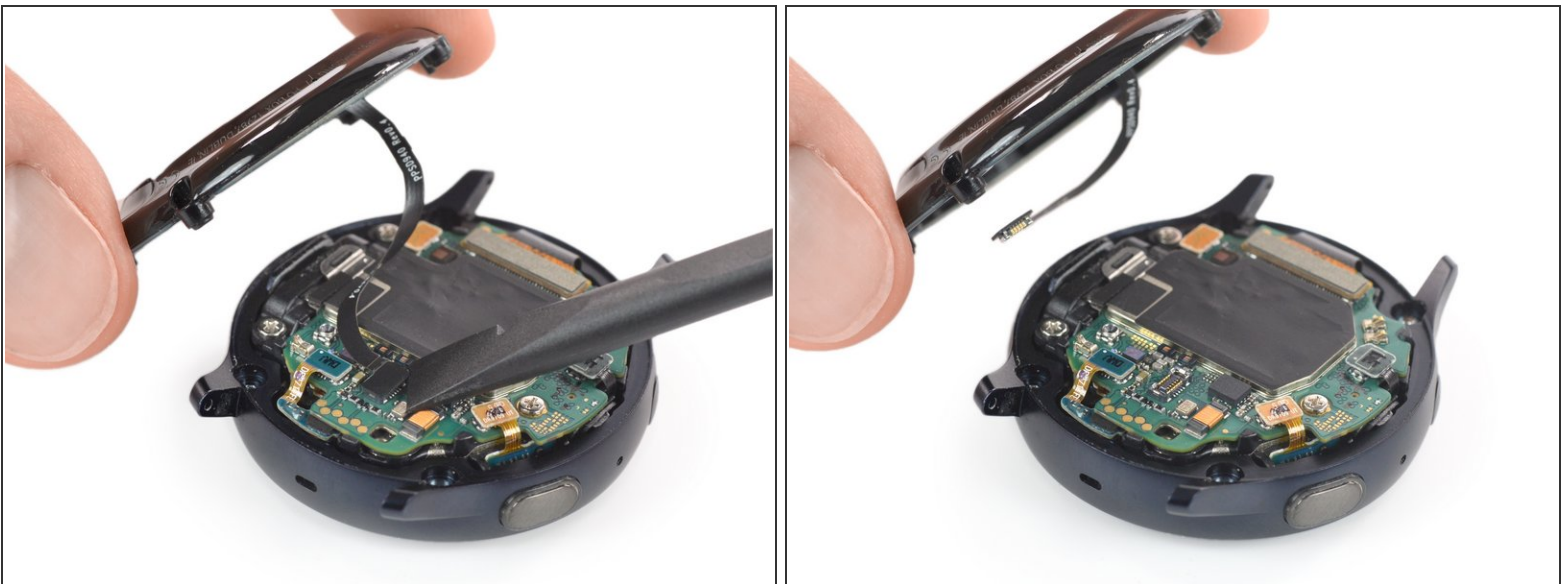
Step 3 — Separate the back cover from the housing



- Use an opening pick and place it between the plastic back cover and the metal housing near the buttons.
- Push the opening pick into the gap to separate the back cover from the housing.

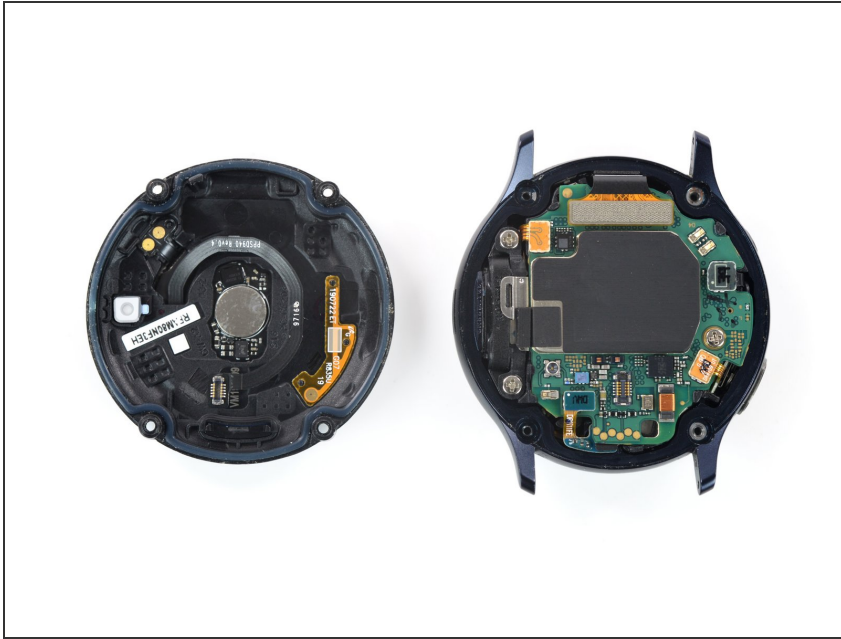
⚠ Don't remove the back cover all the way yet. There is a cable connecting it to the motherboard.

Step 4 — Disconnect the sensor array



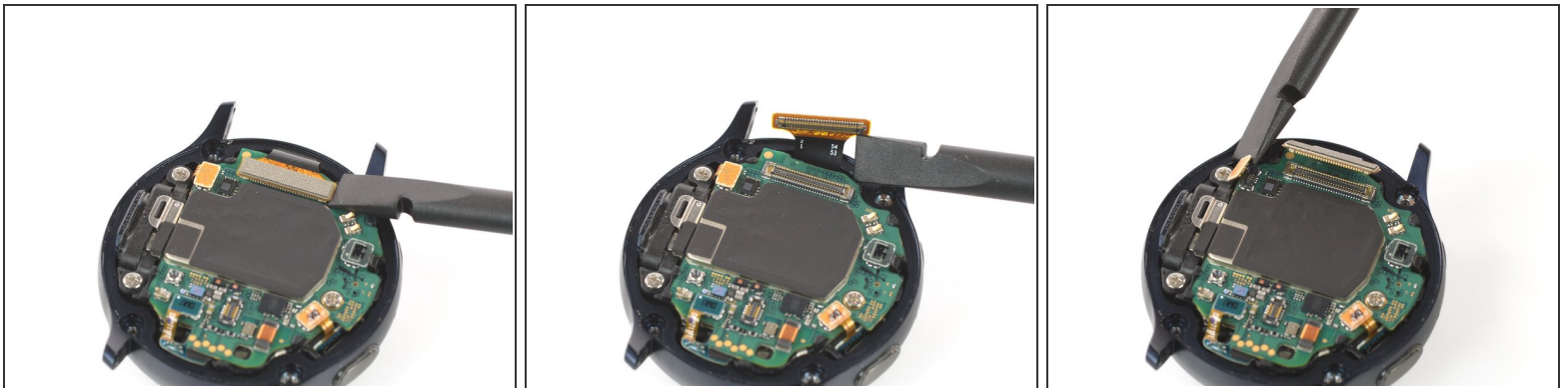
- Carefully lift the back cover to access the sensor array connector.
- Use a spudger to disconnect the sensor array from the motherboard.

Step 5 — Remove the back cover



- Remove the back cover.

Step 6 — Disconnect the display and speaker



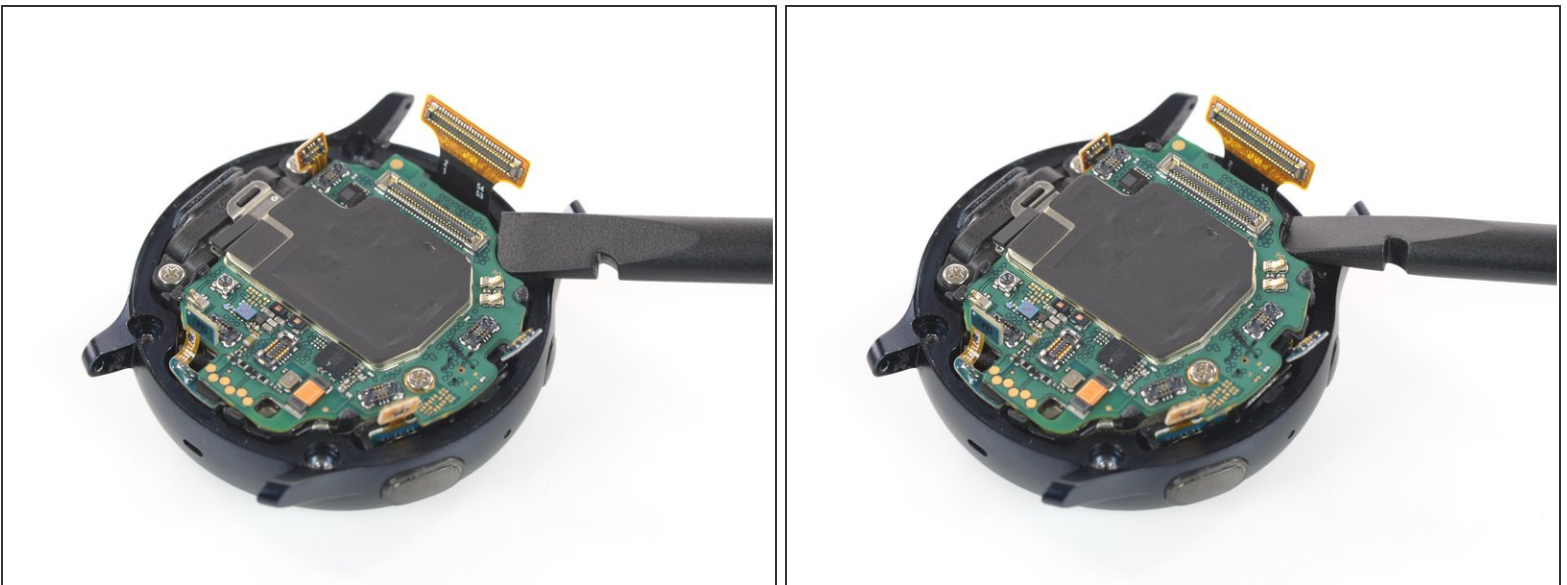
- Use a spudger to disconnect the display assembly and the speaker.

Step 7 — Disconnect the barometric sensor, buttons, and mic




- Use a spudger to disconnect the barometric sensor, the buttons, and the microphone.

Step 8 — Lift the core assembly



- Place a spudger underneath the motherboard at the top right next to the display connector.
- Slightly twist and lever the spudger to loosen the core assembly.

 It might help to also check the comments below this and the next step if you're having difficulties.

Step 9 — Remove the core assembly



- Grab the core assembly and carefully slide it out from under the cables.
- Remove the core assembly.

To reassemble your device, follow these instructions in reverse order.