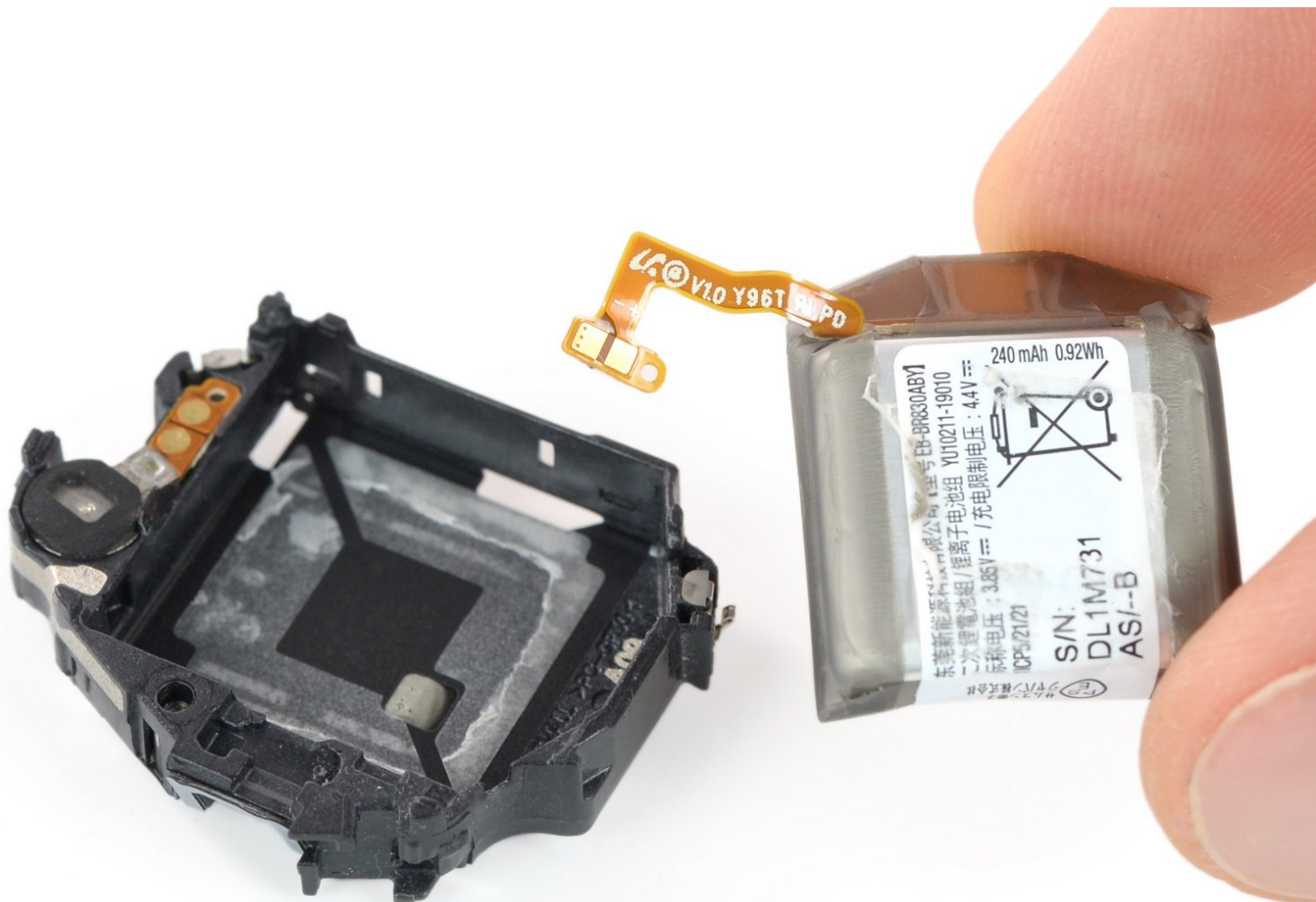




Samsung Galaxy Watch Active2 Battery Replacement

How to replace a worn-out or dead battery in your Samsung Galaxy Watch Active2.

Written By: Tobias Isakeit



INTRODUCTION

Use this guide to replace a worn-out or dead battery in your Samsung Galaxy Watch Active2.

If your battery is swollen, [take appropriate precautions](#). For your safety, **discharge your battery below 25%** before disassembling your watch. This reduces the risk of a dangerous thermal event if the battery is accidentally damaged during the repair.

You might need replacement adhesive to reattach the battery when reassembling the device.



TOOLS:

- [Tri-point Y00 Screwdriver](#) (1)
- [iFixit Opening Picks \(Set of 6\)](#) (1)
- [Spudger](#) (1)
- [Phillips #00 Screwdriver](#) (1)
- [ESD Safe Tweezers Blunt Nose](#) (1)
- [Precut Adhesive Card](#) (1)



PARTS:

- [Galaxy Watch Active2 \(40 mm\) Battery](#) (1)
- [Galaxy Watch Active2 \(44 mm\) Battery](#) (1)

Step 1 — Turn off the watch



- Turn off the Galaxy Watch Active2 by pushing and holding the bottom button for approximately 3 seconds. You should feel a short vibration.
- When the "Power off" symbol appears, tap the center of the screen to make it shut down. You should feel a longer vibration for confirmation.

Step 2 — Remove the rear screws



- Use a Tri-point Y00 screwdriver to remove the four 4 mm-long screws on the back of the watch.

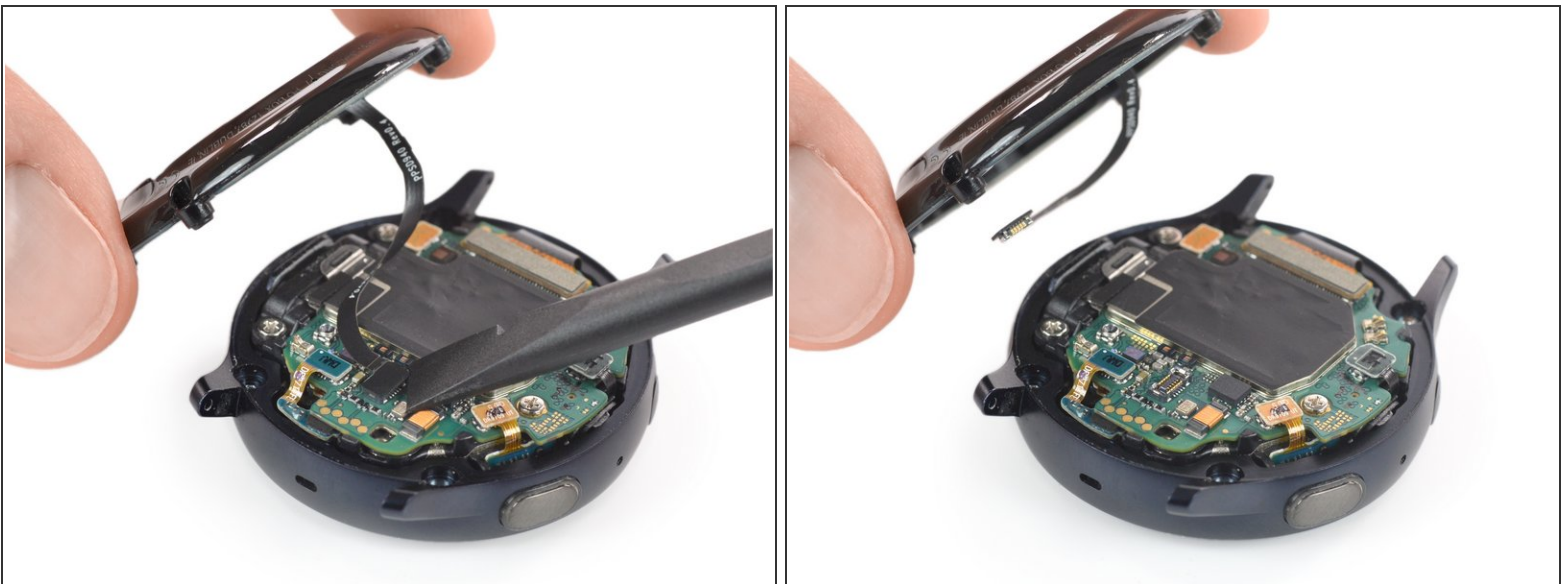
Step 3 — Separate the back cover from the housing



- Use an opening pick and place it between the plastic back cover and the metal housing near the buttons.
- Push the opening pick into the gap to separate the back cover from the housing.

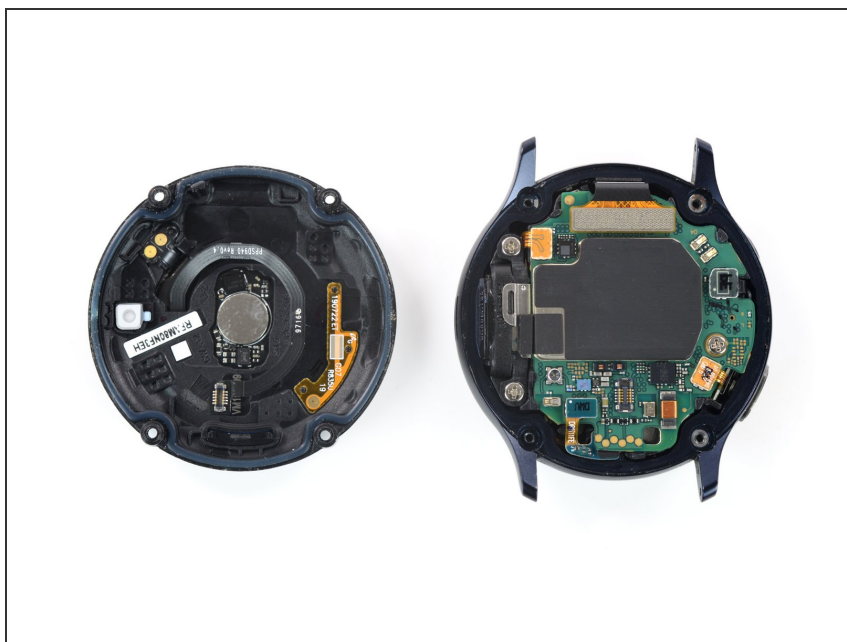
⚠ Don't remove the back cover all the way yet. There is a cable connecting it to the motherboard.

Step 4 — Disconnect the sensor array



- Carefully lift the back cover to access the sensor array connector.
- Use a spudger to disconnect the sensor array from the motherboard.

Step 5 — Remove the back cover



- Remove the back cover.

Step 6 — Disconnect the display and speaker



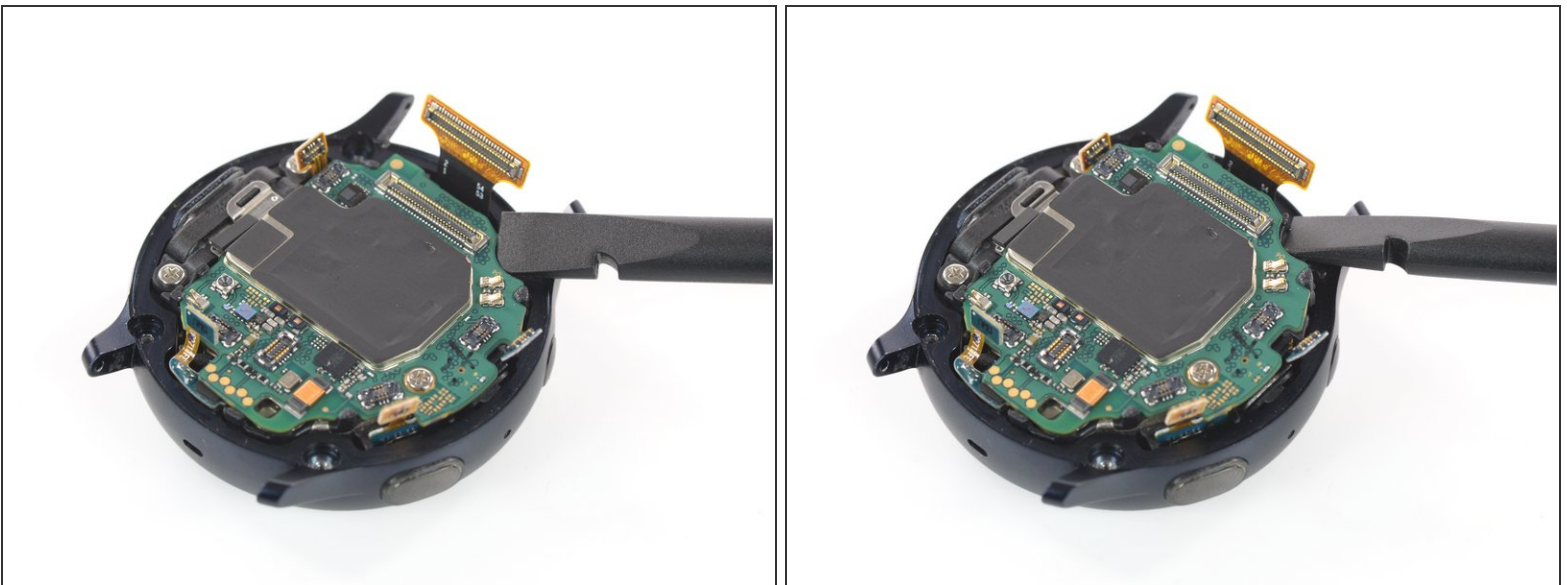
- Use a spudger to disconnect the display assembly and the speaker.

Step 7 — Disconnect the barometric sensor, buttons, and mic




- Use a spudger to disconnect the barometric sensor, the buttons, and the microphone.

Step 8 — Lift the core assembly



- Place a spudger underneath the motherboard at the top right next to the display connector.
- Slightly twist and lever the spudger to loosen the core assembly.

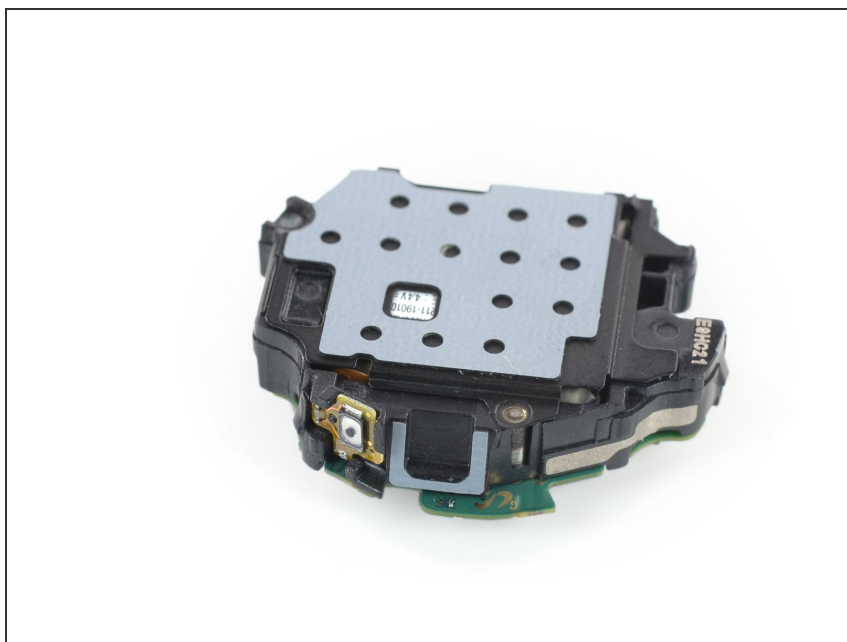
 It might help to also check the comments below this and the next step if you're having difficulties.

Step 9 — Remove the core assembly



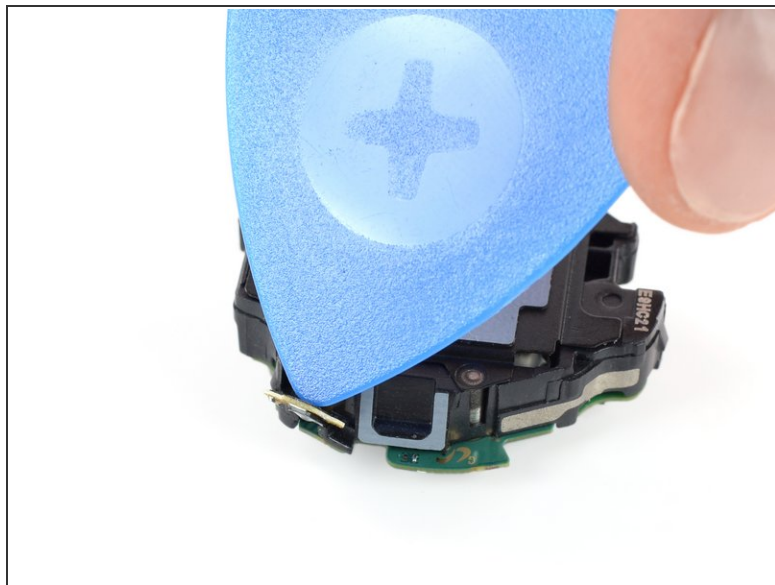
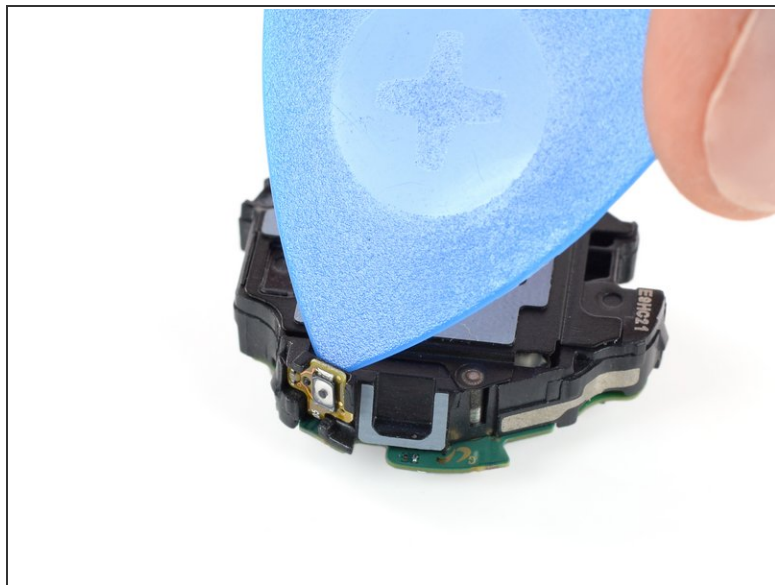
- Grab the core assembly and carefully slide it out from under the cables.
- Remove the core assembly.

Step 10 — Flip the Core Assembly



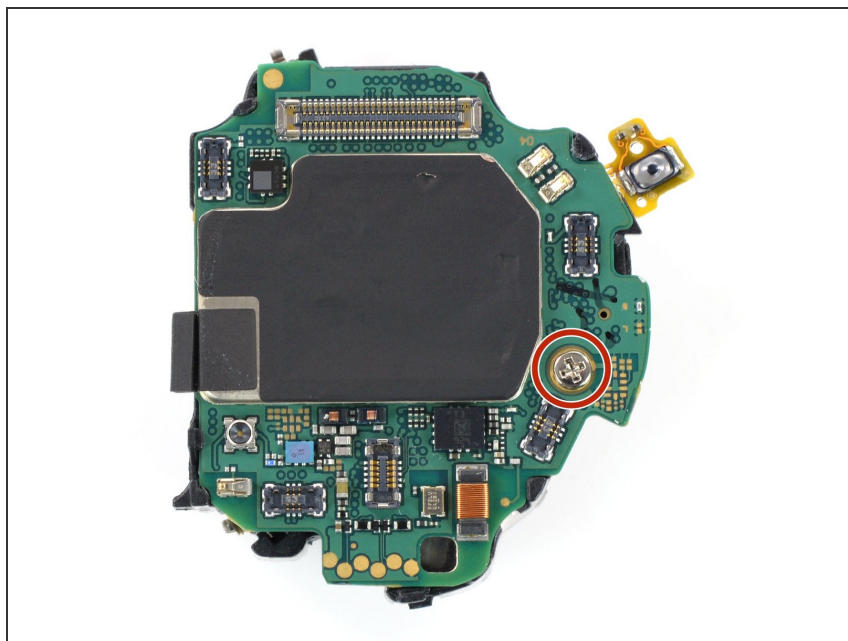
- Flip the core assembly over so the motherboard faces down.

Step 11 — Undo the top button



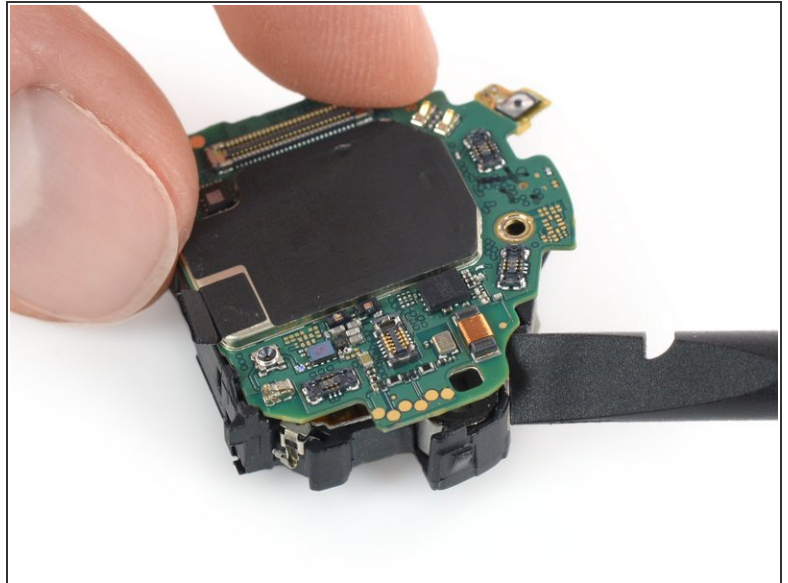
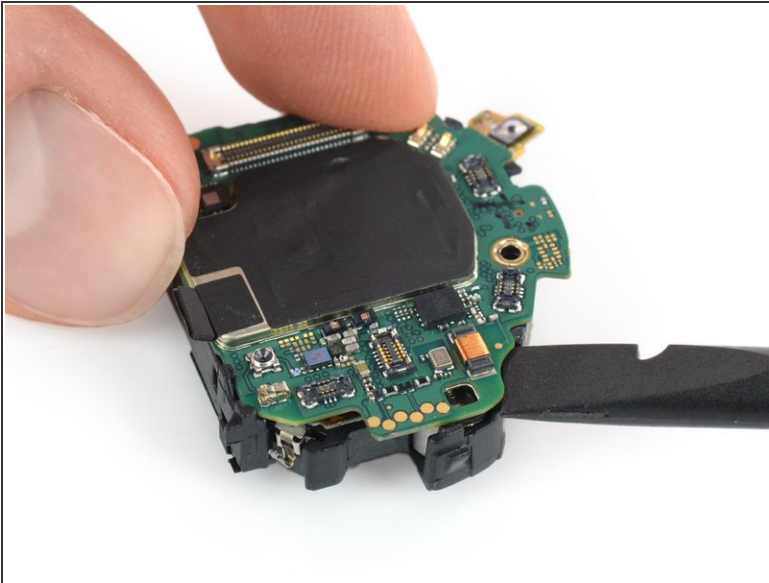
- Use the tip of an opening pick to peel the top button off the plastic frame.

Step 12 — Remove the motherboard screw



- Use a Phillips screwdriver to remove the 4.4 mm-long screw holding the motherboard in place.

Step 13 — Free the motherboard



- Place the flat end of a spudger between the motherboard and the plastic frame near the copper coil at the bottom right.
- Twist the spudger to free the motherboard from the plastic tabs.

Step 14 — Remove the motherboard



- Slide the motherboard out from under the remaining plastic tabs to remove it.

Step 15 — Lift the battery



- Insert the flat end of a spudger between the bottom of the battery and the core frame.
 - ⓘ The battery is secured with some mild adhesive. If the adhesive is too strong you can use a hair dryer to soften it.
 - Use the spudger to lever up the battery.
- ⚠ Take care not to puncture or bend the battery. Only use plastic tools. A punctured or bent battery may leak dangerous chemicals or cause a thermal event.

Step 16 — Remove the battery



- Use a pair of tweezers to grab the connector and slowly pull it off the core frame.
 - ❗ The battery connector is affixed with mild adhesive.
- Remove the battery from the core assembly.
- ✦ When installing a new battery make sure the [tiny hole](#) on the battery connector aligns with the pin on the core frame.

Secure the new battery with pre-cut adhesive or double-sided adhesive tape. Press the new battery firmly into place.

To reassemble your device, follow these instructions in reverse order.

For optimal performance, **calibrate your newly installed battery**: Charge it to 100% and keep charging it for at least 1 more hour. Then use your device until it shuts off due to low battery. Finally, charge it uninterrupted to 100%.

Take your e-waste to an [R2 or e-Stewards certified recycler](#).

Repair didn't go as planned? Try some [basic troubleshooting](#), or ask our [Answers community](#) for help.