

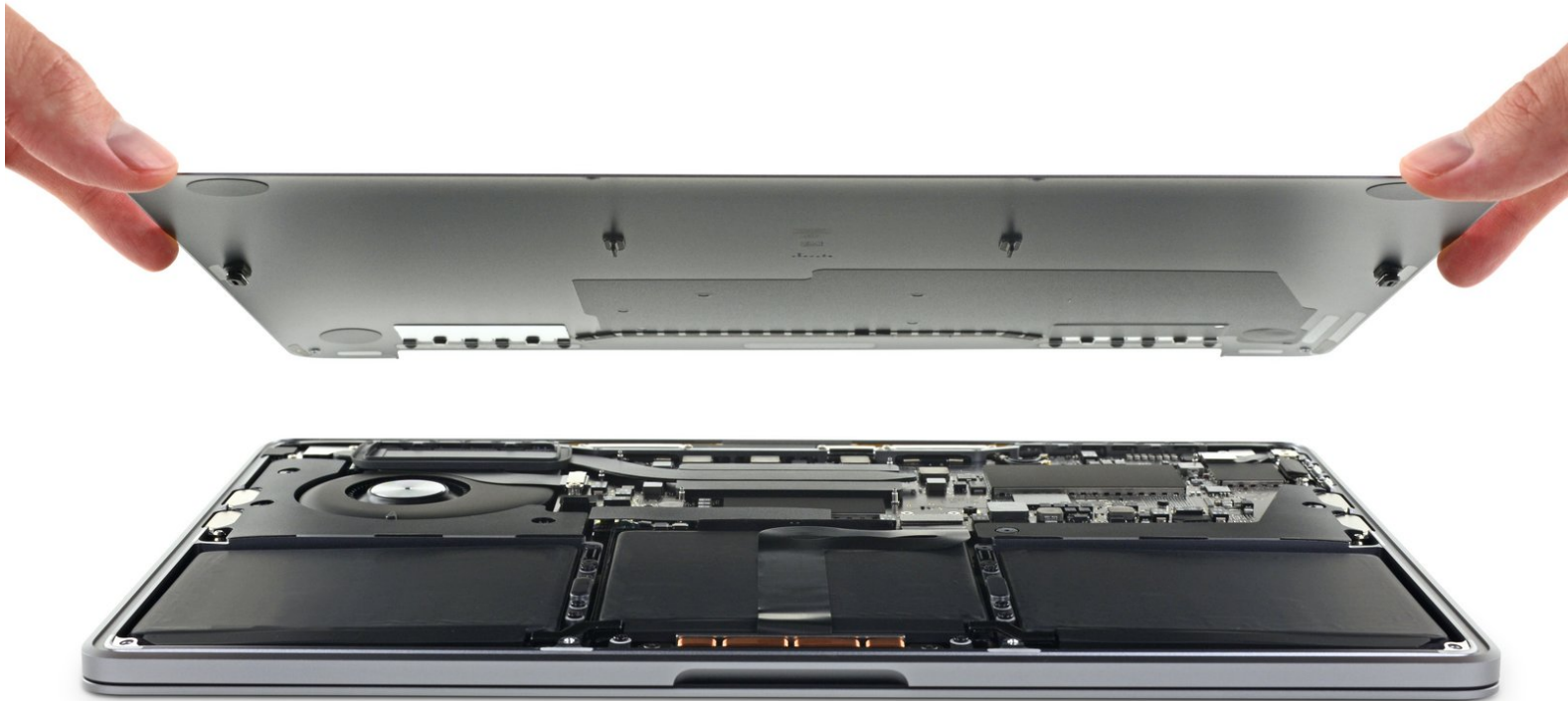


MacBook Pro 13" Two Thunderbolt Ports 2020

Lower Case Replacement

This serves as the starting point for every...

Written By: Carsten Frauenheim



INTRODUCTION

This serves as the starting point for every repair on your MacBook Pro. You'll need a P5 Pentalobe screwdriver to remove the lower case and get into the device.

For your safety, discharge your MacBook Pro's battery before you begin this procedure. A charged lithium-ion battery can create a dangerous and uncontrollable fire if accidentally punctured.



TOOLS:

- [P5 Pentalobe Screwdriver Retina MacBook Pro and Air](#) (1)
- [Suction Handle](#) (1)
- [iFixit Opening Picks \(Set of 6\)](#) (1)



PARTS:

- [MacBook Pro 13" \(A2289 2020\) Lower Case](#) (1)

Step 1 — Remove the lower case



i Before starting this procedure, you should disable your Mac's **Auto Boot** feature. Auto Boot powers on your Mac when you open the lid, and may be accidentally triggered during disassembly. [Use this guide](#) to disable Auto Boot.

- If your MacBook is running Big Sur v11.1 or later, disabling Auto Boot may not work. You can proceed normally, but make sure to disconnect the battery as soon as you're inside.

! Completely power off and unplug your MacBook before you start. Close the display and flip the entire laptop upside-down.

- Use a P5 Pentalobe driver to remove the six screws securing the lower case:

- Two 6.8 mm screws
- Two 5.3 mm screws
- Two 3.4 mm screws

★ Throughout this repair, [keep track of each screw](#) and make sure it goes back exactly where it came from to avoid damaging your device.

Step 2



- Apply a suction handle to the lower case near the front-center area of the MacBook Pro.
- Lift the suction handle to create a slight separation between the lower case and the chassis.

Step 3



- Insert one corner of an opening pick into the space between the lower case and the chassis.
- Slide the opening pick around the nearest corner and halfway up the side of the case.
- ① This releases the first of the hidden clips securing the lower case to the chassis. You should feel and hear the clip pop free.

Step 4



- Repeat the previous step on the opposite side, sliding your opening pick under the lower case and up the side to pop the second clip free.

Step 5



- Insert your opening pick once again under the front edge of the lower case, near one of the two centermost screw holes.
- Give the pick a firm twist to pop free the third clip securing the lower case to the chassis.
- Repeat this procedure near the other of the two centermost screw holes, popping the fourth clip free.

Step 6



- Pull the lower case firmly towards the front of the MacBook (away from the hinge area) to separate the last of the clips securing the lower case.

ⓘ It may help to pull first at one corner, then the other.

⚠ Pull to the side—not up.

⚠ This may require a lot of force.

⚠ The edges of the case can be sharp, so grip the sides carefully.

Step 7



- Remove the lower case.
- ☑ To reinstall the lower case:
 - [Set it in place](#) and align the sliding clips near the display hinge. Press down and slide the cover toward the hinge. It should stop sliding as the clips engage.
 - When the sliding clips are fully engaged and the lower case looks correctly aligned, press down firmly on the lower case to engage the four hidden clips underneath. You should feel and hear them snap into place.

Compare your new replacement part to the original part—you may need to transfer remaining components or remove adhesive backings from the new part before installing.

To reassemble your device, follow the above steps in reverse order.

Take your e-waste to an [R2 or e-Stewards certified recycler](#).

Repair didn't go as planned? Try some basic [troubleshooting](#) or search our [Answers community](#) for help