

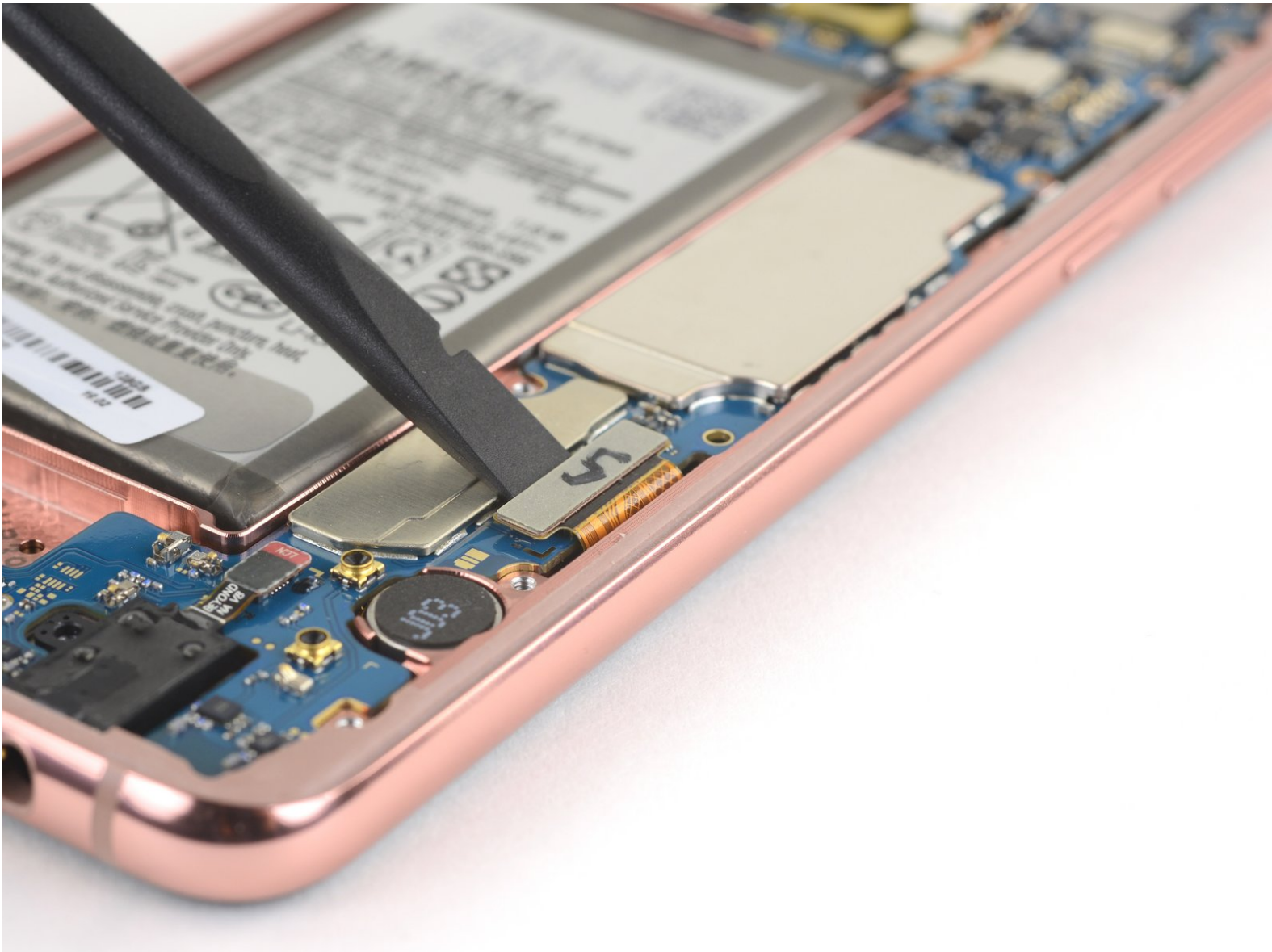


Samsung Galaxy S10e Screen Disconnect

Prereq

Prereq guide for disconnecting the screen connector for the Samsung Galaxy S10e.

Written By: Arthur Shi



INTRODUCTION

This is a prerequisite guide! This guide is part of another procedure and is not meant to be used alone.

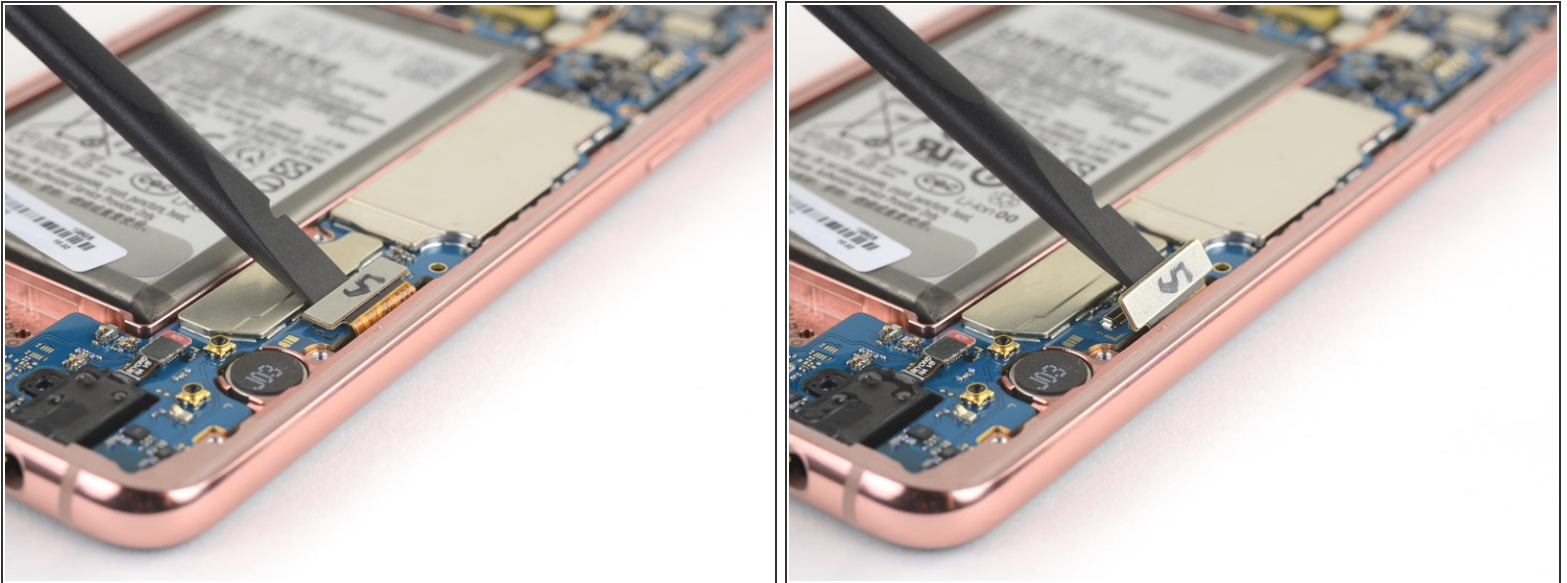
Display connector disconnect for the Samsung Galaxy S10e.



TOOLS:

- [Spudger](#) (1)
-

Step 1 — Disconnect the screen



- Use the flat end of a spudger to pry up and disconnect the screen connector from its motherboard socket.
- ⓘ To re-attach [press connectors](#) like this one, carefully align and press down on one side until it clicks into place, then repeat on the other side. Do not press down on the middle. If the connector is misaligned, the pins can bend, causing permanent damage.

To reassemble your device, follow these instructions in reverse order.