



Hario V60 Drip Kettle "Buono" Bimetallic strip Replacement

After only a bit more than one year of use, my...

Written By: cortig



INTRODUCTION

After only a bit more than one year of use, my kettle was no longer automatically stopping once the water had boiled, leading to significant leaks from the bottom (not just the expected few drips).

It turns out the bimetallic strip that trips the switch once the water boiled was significantly corroded and needed to be replaced. It's a trivial (and fairly cheap) repair once you've identified the issue and found a replacement part. I'm sure the same solution can be applied to many other electric kettles using the same type fo design.

I believe you can limit the reoccurrence of this issue by making sure you drain de condensation from the kettle after each use (tilt the kettle with the switch down to let the water drain — you'll get 5—10 good drops every time).



TOOLS:

- [Phillips #1 Screwdriver](#) (1)
- [Triangular headed Screwdriver](#) (1)



PARTS:

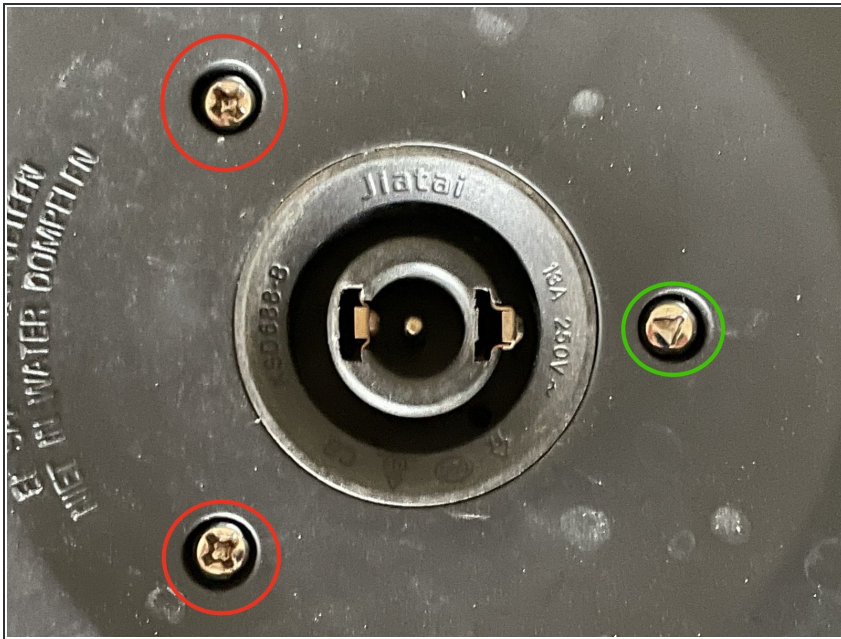
- [Bimetallic strip from Steam Electric Kettle Thermostat, Temperature Control, 250V 13A 2 Terminals](#) (1)

Step 1 — Start



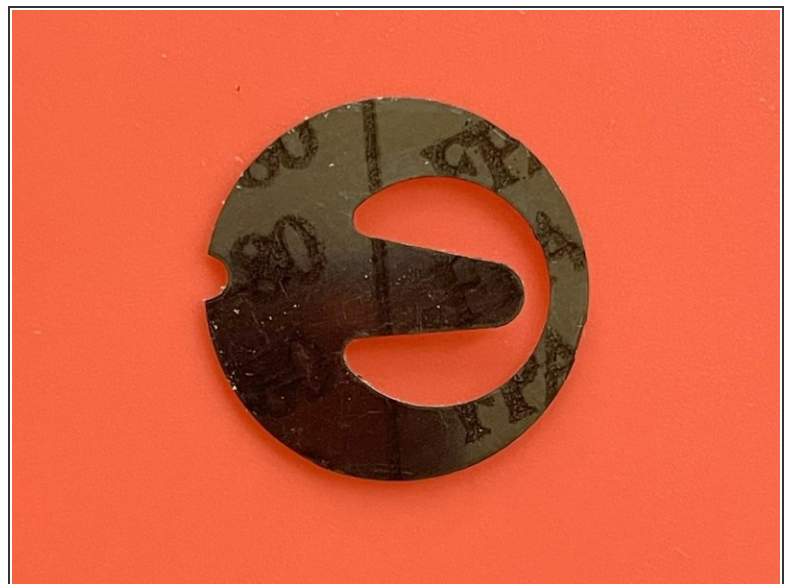
- Empty the kettle and make sure nothing is coming out of the switch (some condensation is expected to escape from there)

Step 2 — Base plate disassembly



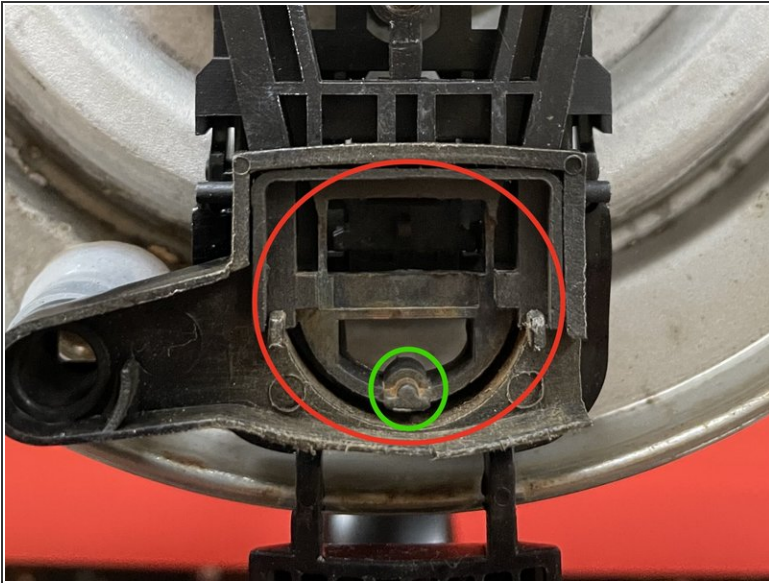
- Remove the two Phillips screws (circled in red on the picture) and use a triangular bit to remove the third screw (circled in green on the picture)

Step 3 — Extracting the strip from the replacement control terminal



- I couldn't find just the bimetallic switch, so I purchased instead a replacement temperature control terminal for another type of Kettle on Amazon. The strip appeared to be pretty standard and slides right out when you lift it from the bottom notch.

Step 4 — Replacing the strip



- You can remove the old corroded strip from the kettle (red circle on the picture). Simply lift it from the little notch on the bottom (green circle on the picture).
- Then you can slide in the replacement strip, with the middle metal tongue facing up. Make sure to slide it under the two plastic side guides.
- When the water boils in the kettle, steam is sent through inner tubing down to the bimetallic strip. The strip will change shape with the heat, the tong will flip down, and trip the switch.

To reassemble your device, follow these instructions in reverse order.