



# Motorola Q700 Sidekick Keypad and Front Cover Replacement

enable user to disassemble the front cover and keyboard

Written By: Rich





## TOOLS:

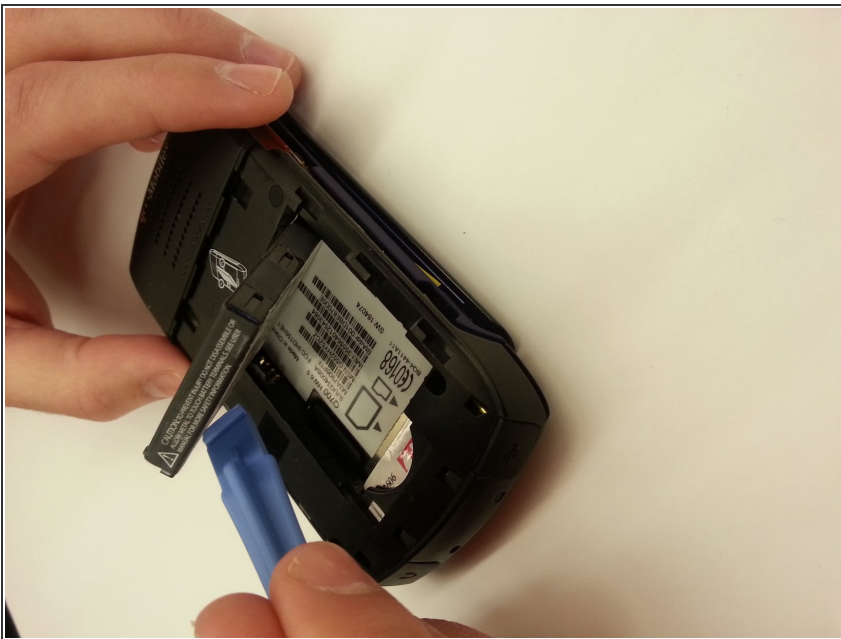
- [Phillips #00 Screwdriver](#) (1)
- [Phillips #1 Screwdriver](#) (1)
- [iFixit Opening Tools](#) (1)
- [Phillips #0 Screwdriver](#) (1)

## Step 1 — Phone



- When looking at the front of the phone, use the Plastic Opening Tool to pry off the four buttons located in each of the corners on the front.

## Step 2



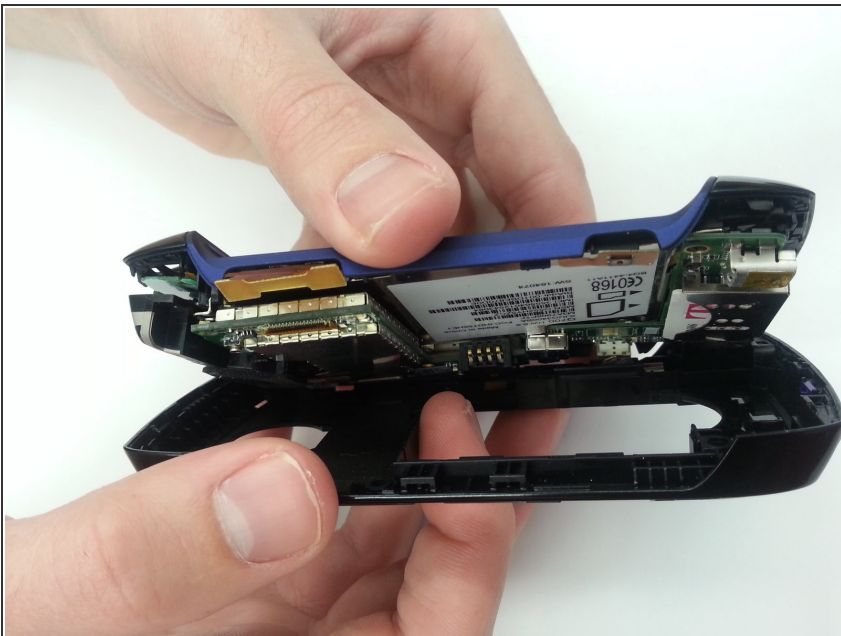
- Turn the phone face-down. Remove the back cover, exposing the battery.
- Use the Plastic Opening Tool to pry the battery out of the phone.

### Step 3



- Using the appropriate size Phillips screwdriver, unscrew the four screws located in each of the corners on the back of the device.
- Although the battery is shown in this picture, please remember to make sure that it is removed in order to proceed with disassembly.

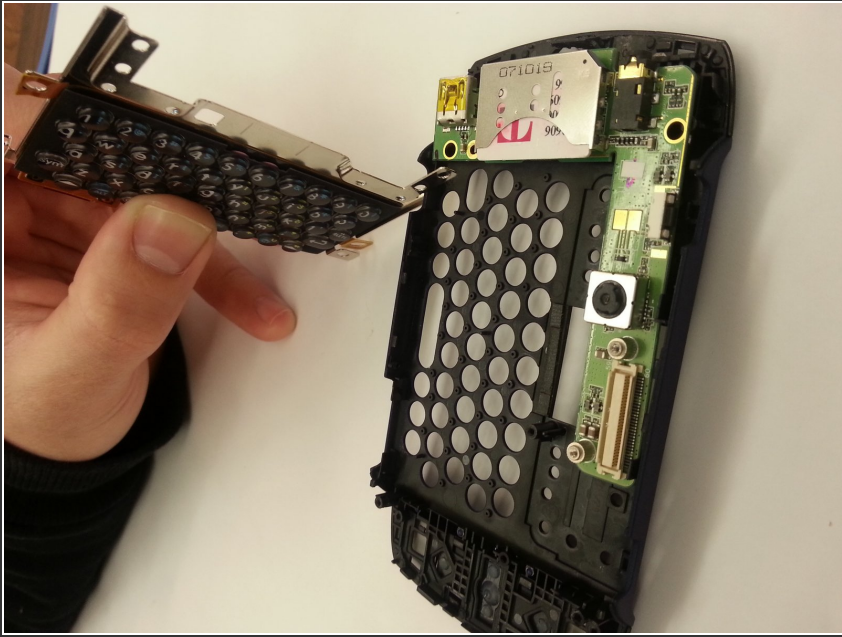
### Step 4



- After removal of the back screws, use the Plastic Opening Tool to carefully separate the top and bottom halves of the device.

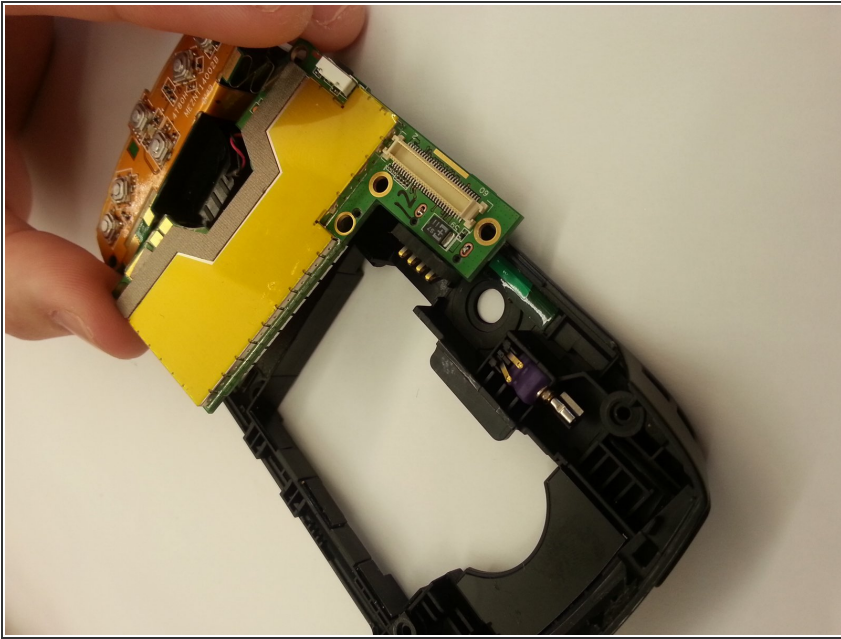


## Step 5



- Using the appropriate size Phillips screwdriver, remove any screws that are attached or associated with the keypad and carefully remove keypad from the device.

## Step 6



- On the back of the device, you will see individual green and yellow technical pieces. Remove those two pieces from the phone with your fingers and set aside.

## Step 7



- You should now have all of the pieces separated and disassembled for your device.

## Step 8 — Keypad and Front Cover



- On the front of the device, pry off the top right, top left, bottom right, and bottom left buttons

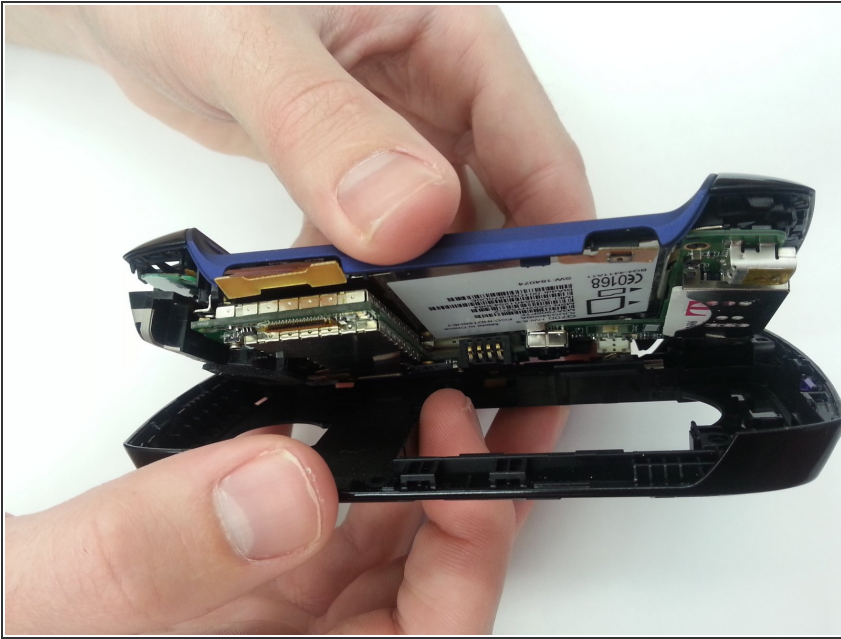
## Step 9



- On the back of the device unscrew the top right, top left, bottom right, and bottom left buttons using appropriate size Phillips screwdriver

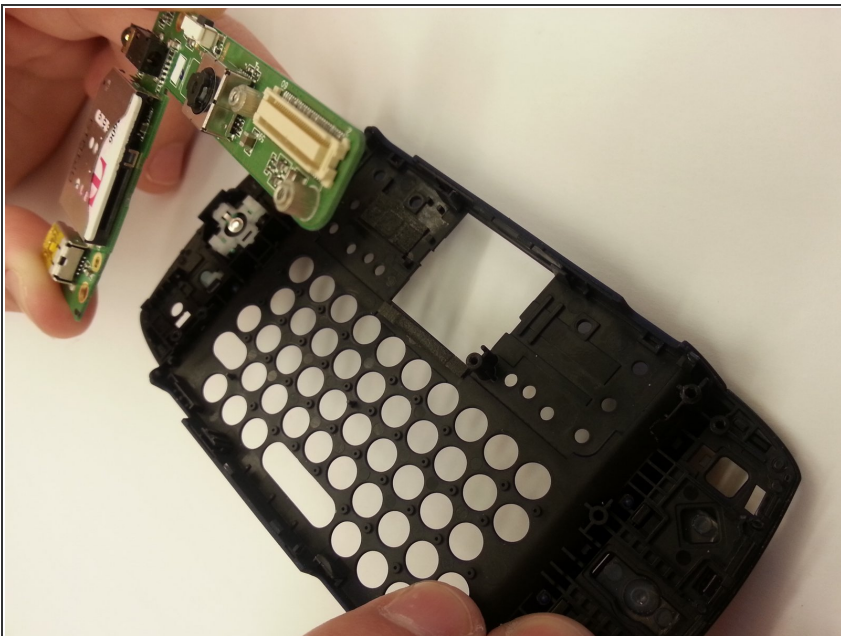


## Step 10



- Once screws are dismantled, use plastic opening tool to assist separation of the top half of device from the bottom half

## Step 11



- Unscrew the screws around the keypad and take apart slowly and gently using your hands

To reassemble your device, follow these instructions in reverse order.