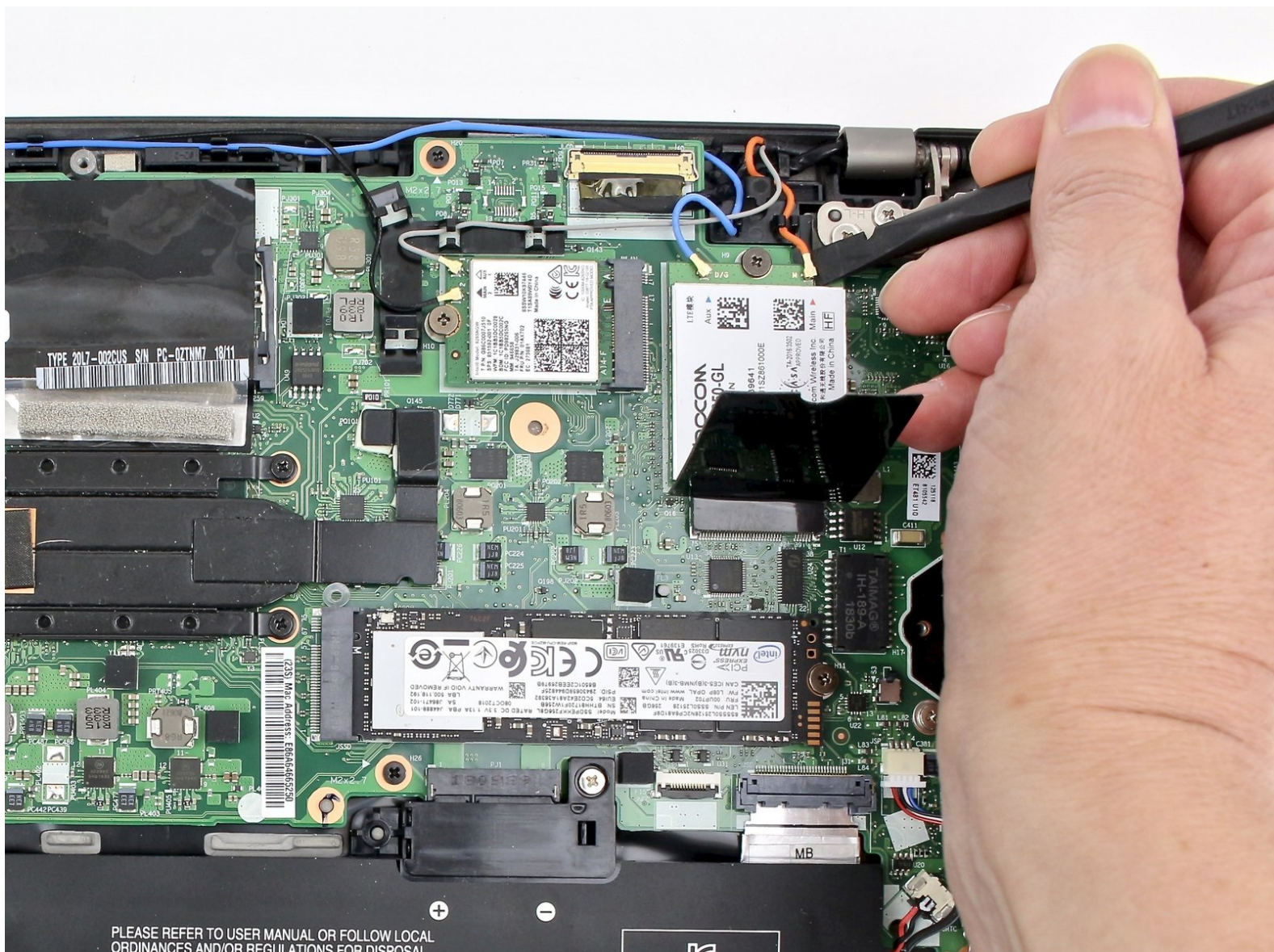




Lenovo ThinkPad T480s LCD Assembly Replacement

How to replace the LCD Assembly for your Lenovo ThinkPad T480s laptop.

Written By: Sarah Westberg



INTRODUCTION

Use this guide to replace the display assembly of your Lenovo ThinkPad T480s laptop.

The display assembly includes the screen bezel, hinges, camera/microphone module, WLAN and WWAN antennas, and the LCD (liquid-crystal display) screen. You may opt to replace the entire display assembly, rather than its individual components to save time. Some common symptoms of a faulty display assembly include a blank, black, or flickering screen, hinges that are stiff, loose, or dislocated, or webcam issues that cannot be resolved by fixing the laptop's settings.

Make sure to [disable the internal battery](#), power down your device, and disconnect from any external power sources before you begin.




TOOLS:

- [Phillips #1 Screwdriver](#) (1)
 - [iFixit Opening Tool](#) (1)
 - [Spudger](#) (1)
-

Step 1 — Bottom Cover



 **Disable the battery**, power down the device, and unplug the power adapter from your device before proceeding/beginning the guide.

- Loosen the six captive screws with a Phillips #1 screwdriver.

Step 2



- Remove the bottom cover with an opening tool.
- Start from the top edge near the hinge and work your way along the edge until all of the clips are unsnapped.

Step 3



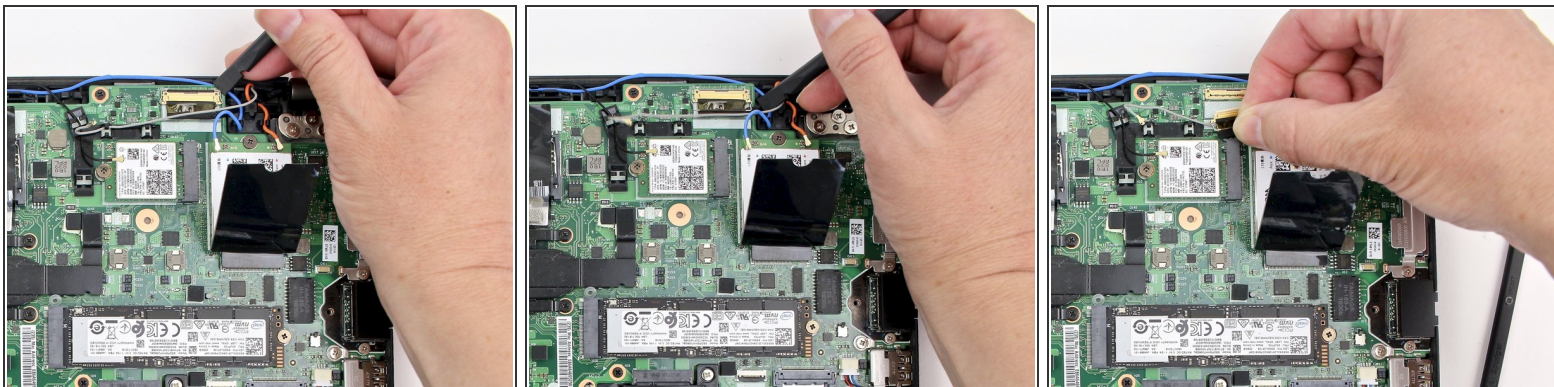
- Lift the bottom cover off.

Step 4 — LCD Assembly



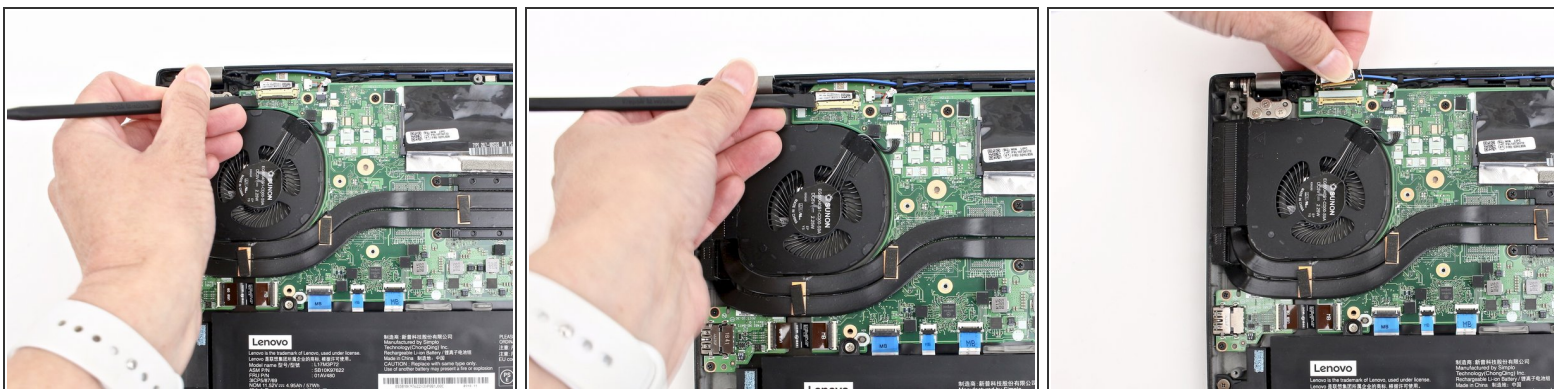
- Use the spudger to disconnect the coaxial cables from the Wi-Fi card and WWAN card.
- 🔍 When reassembling the Wi-Fi card, reattach the black wire closest to the screw and the gray wire on the other side of the black wire. With the WWAN card, reattach the blue wire on the left and the orange wire on the right.
- 📌 There are also small color coded arrows on each card that match the corresponding wires, to make sure you connect to the correct spot.

Step 5



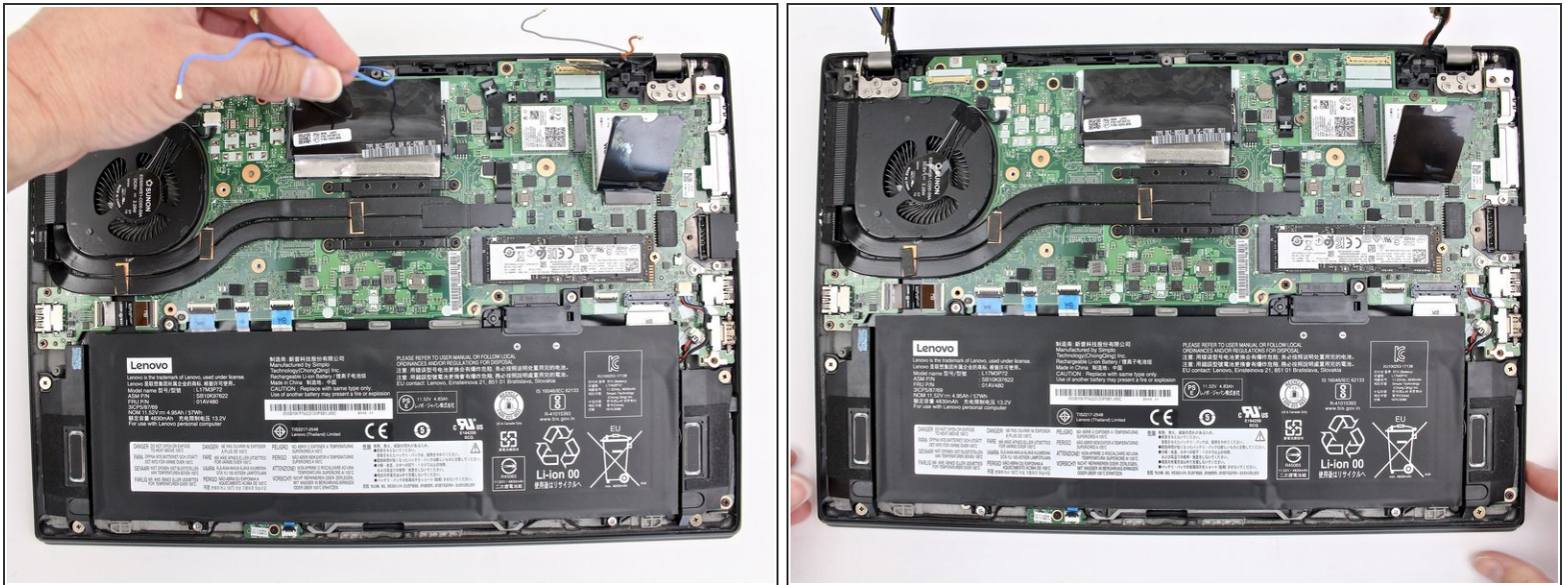
- Use the spudger to disconnect the LCD cable from the motherboard.

Step 6



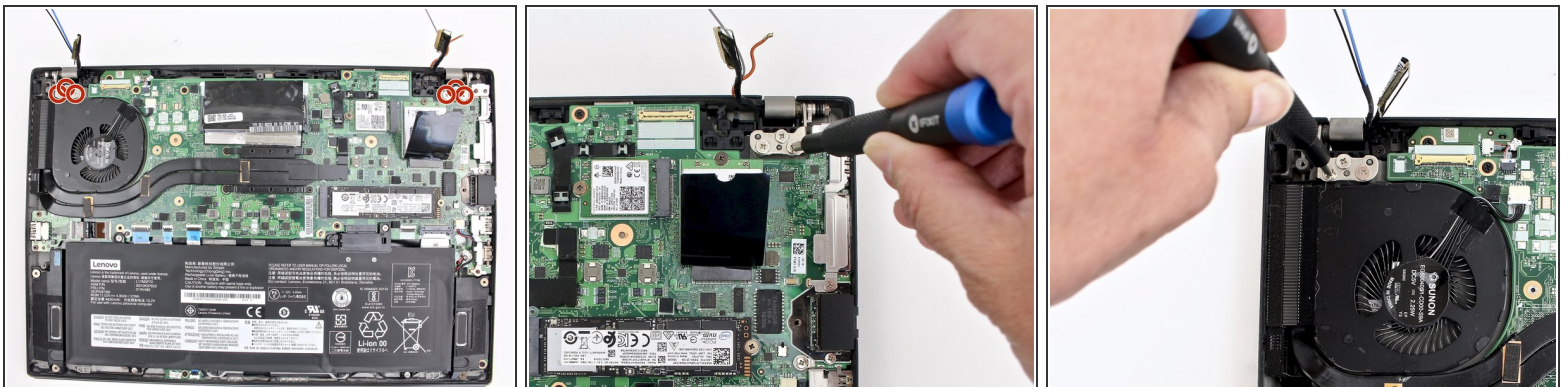
- Disconnect the camera cable from the motherboard using a spudger.

Step 7



- Remove all antenna cables from their routing.

Step 8



- Using the Phillips #1 screwdriver, remove three 5 mm screws from the left hinge and three 5 mm screws from the right hinge.

Step 9



- Carefully rotate the hinges upward and remove the bottom of the machine from the LCD unit.

To reassemble your device, follow these instructions in reverse order.

Take your e-waste to an [R2 or e-Stewards certified recycler](#).

Repair didn't go as planned? Try some [basic troubleshooting](#), or ask our Answers community for help.