



# Toshiba Portege R500 CD Drive Replacement

For this guide we will be opening up the laptop...

Written By: JRJones



# INTRODUCTION

For this guide we will be opening up the laptop to replace the CD drive.

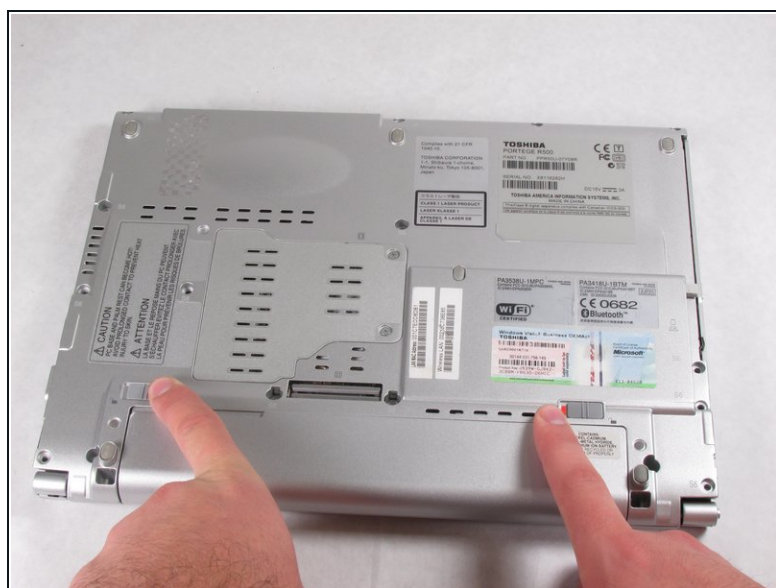
## TOOLS:

Tournevis cruciforme #00 (1)

## PARTS:

Toshiba Portege R500-S5002X Panasonic  
UJ-844GTJ-A DVDRW Drive PATA IDE  
EIDE 7mm CD Drive (1)

## Step 1 — Battery

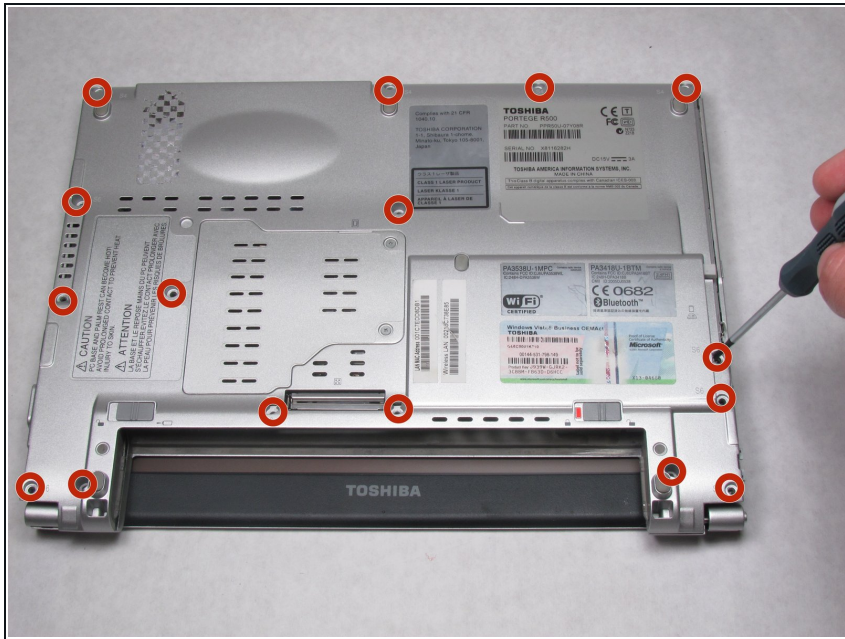


 Make sure the device is off to prevent data loss.

- Slide both latches to the unlocked position to release the battery.
- ① Switch the latch on the right to reveal red. The latch on the left needs to be held.
- Pull the battery toward you while holding the left latch.

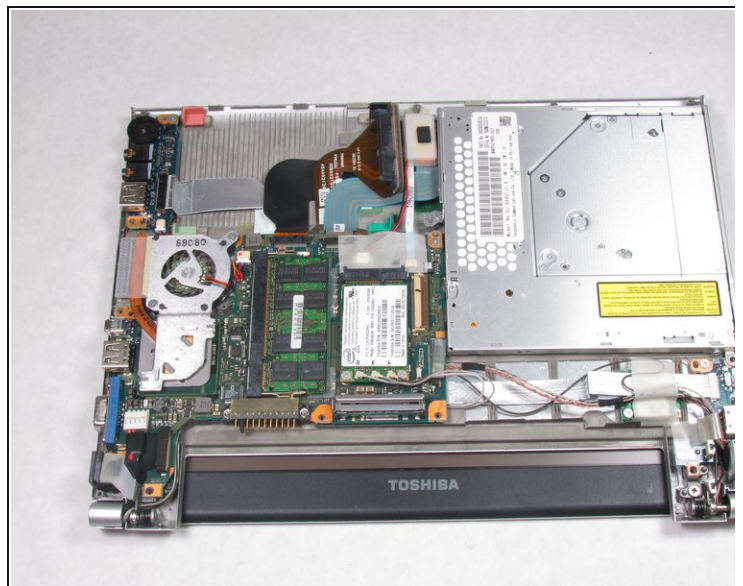


## Step 2 — CD Drive



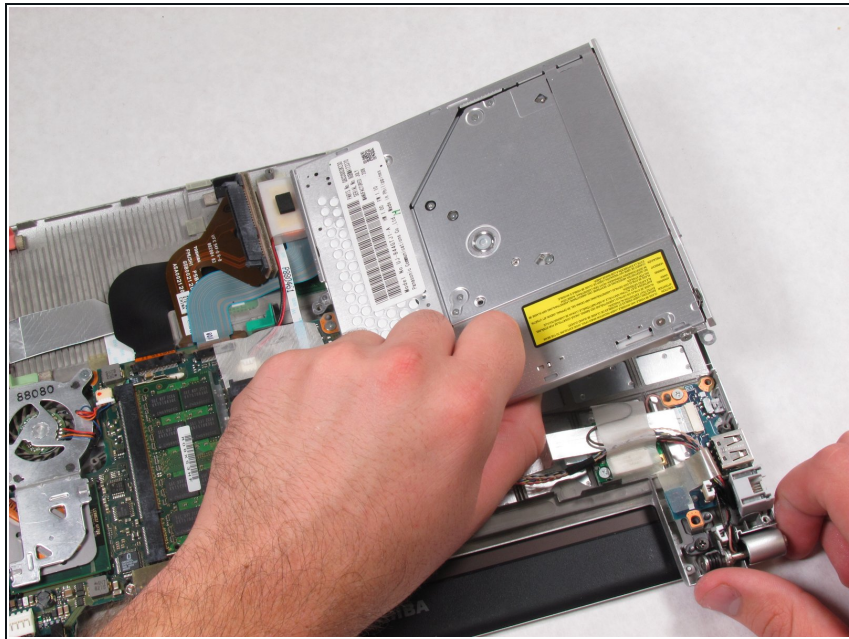
- Remove the sixteen screws at the locations shown with the Phillips 00 screwdriver.

## Step 3



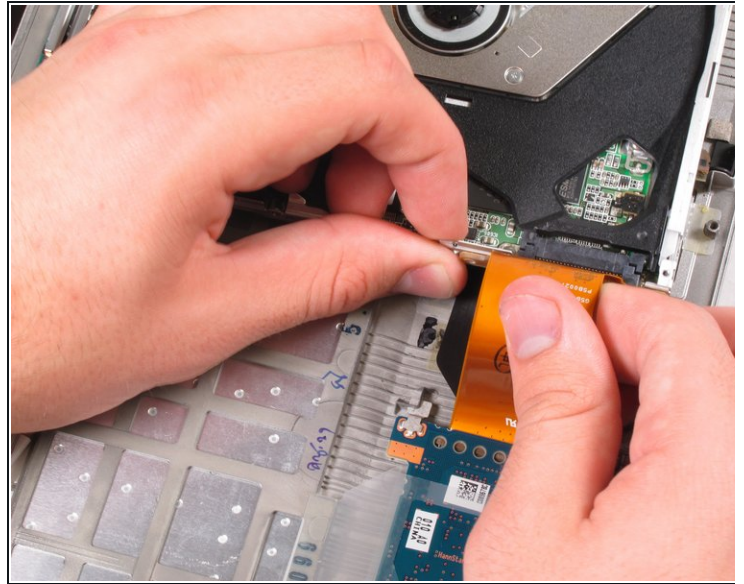
- Pull up on the back casing and remove it, revealing the CD drive.

## Step 4



- Flip the CD Drive over carefully, lifting the right side and turning the drive in order to reveal the attachment.

## Step 5



- ① Rotate the laptop ninety degrees so the screws and connection are visible.
- Remove the two 4 mm screws with the Phillips 00 screwdriver.
- Pull the ribbon cable away from the laptop to release the CD drive from the computer.
- ① A small metal divider may fall when you remove the ribbon cable. It needs to be reattached in between the ribbon cable and the drive when the new drive is put in.

To reassemble your device, follow these instructions in reverse order.