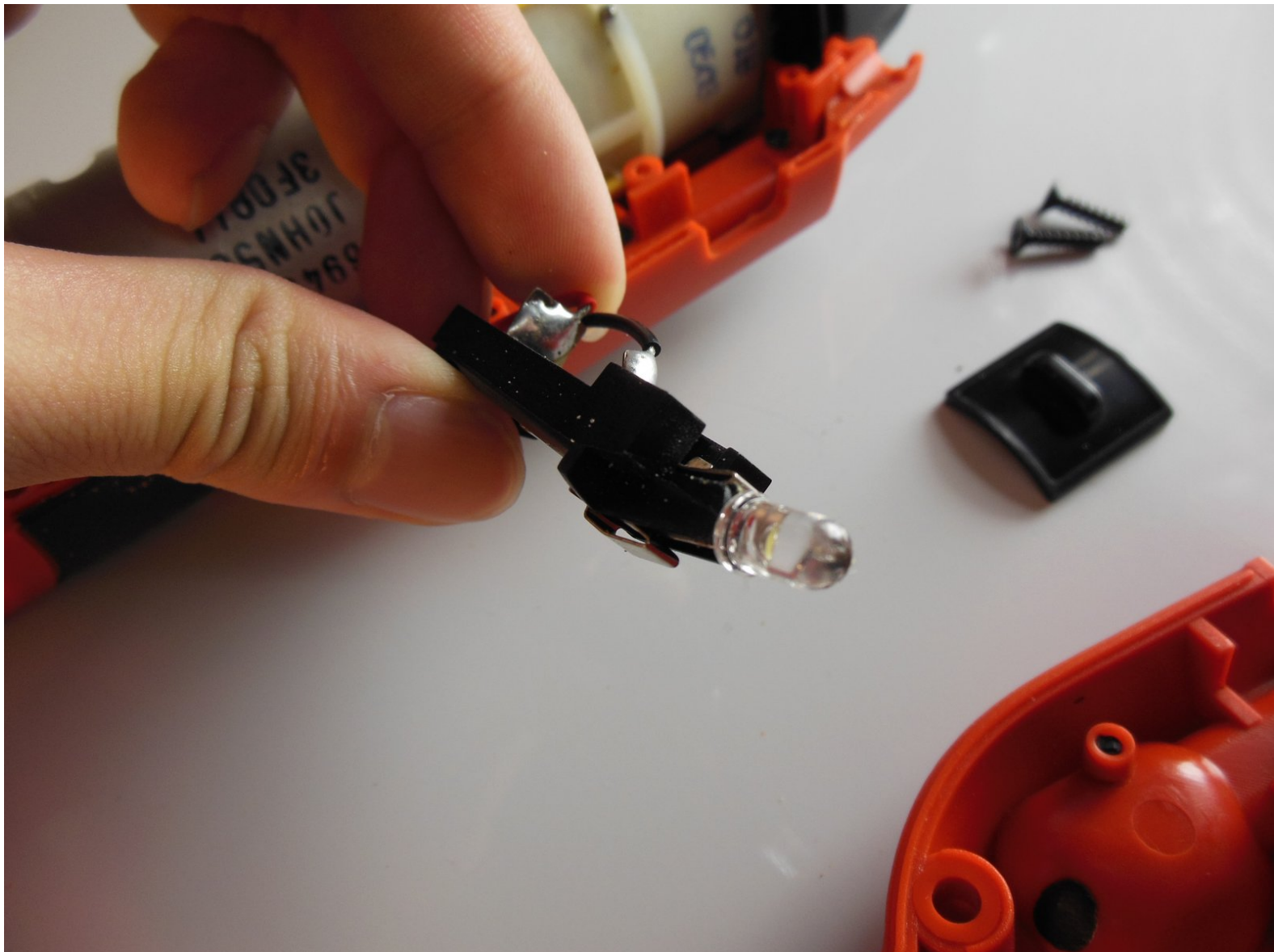




# Black and Decker Pivot Plus PD600 LED light Replacement

Replacing the LED light at the front of the Black and Decker Pivot Plus PD600.

Written By: justin boyd



## INTRODUCTION

If the LED light in the drill no longer turns on, you can use this guide to easily replace it with a new one.



### TOOLS:

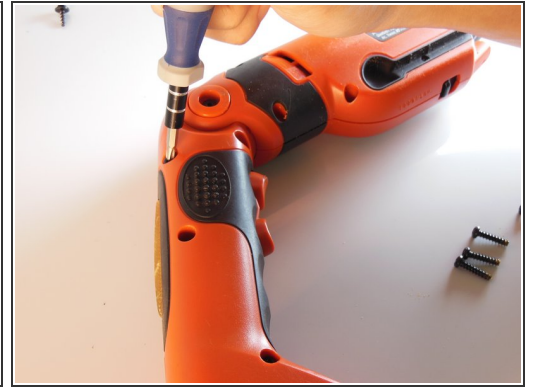
- [Phillips #1 Screwdriver](#) (1)



### PARTS:

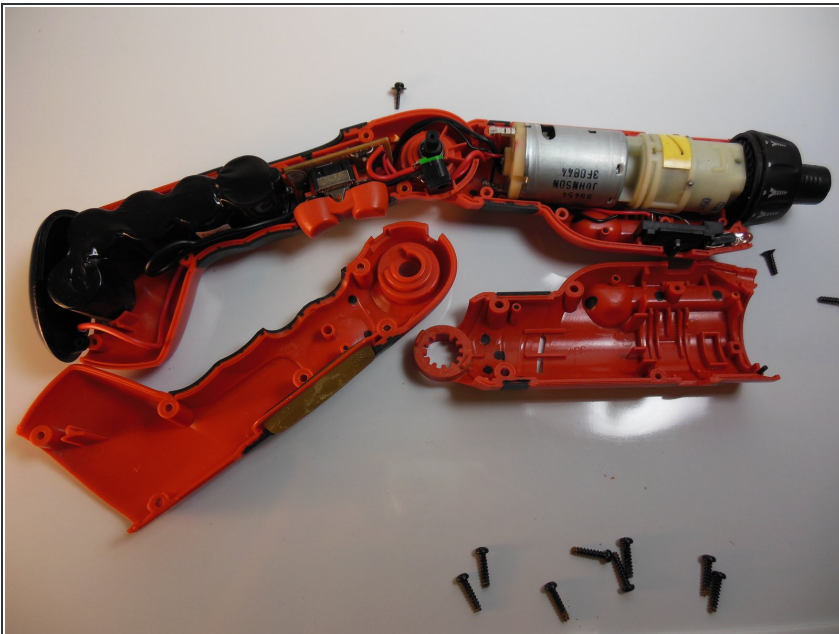
- [IR LED](#) (1)

## Step 1 — Drill



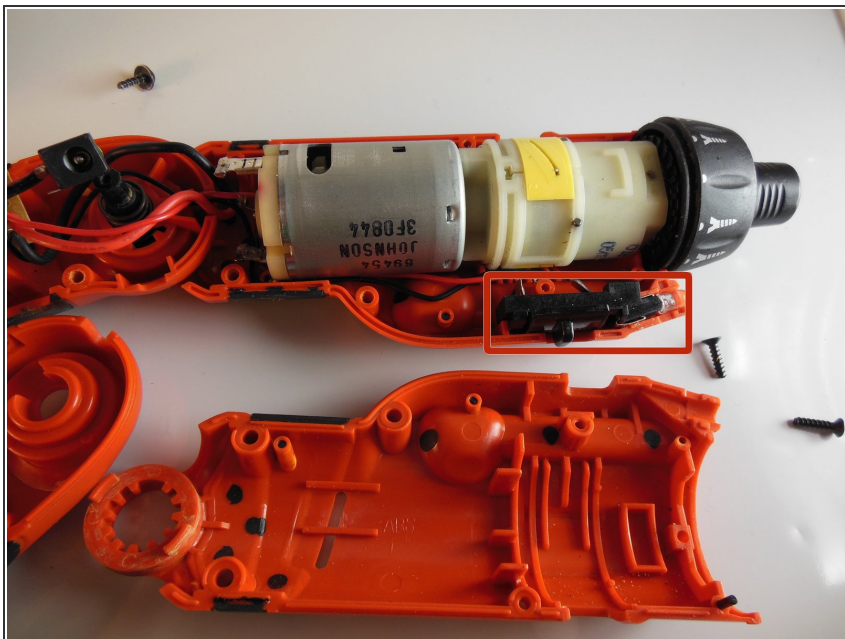
- Remove the nine 15mm Philips #1 screws
- Remove the two 12.5mm Philips #1 screws
- Remove the two 10mm Philips #1 screws

## Step 2



- Lift one side of the drill casing off of the drill. Note that the drill casing consists of two pieces on either side of the drill.

### Step 3 — LED light



- In order to replace the small LED light look below the motor at the front of the drill to find a black plastic piece with two very skinny wires emanating from it.
- The black plastic piece is the housing. The light is placed inside this black plastic housing.

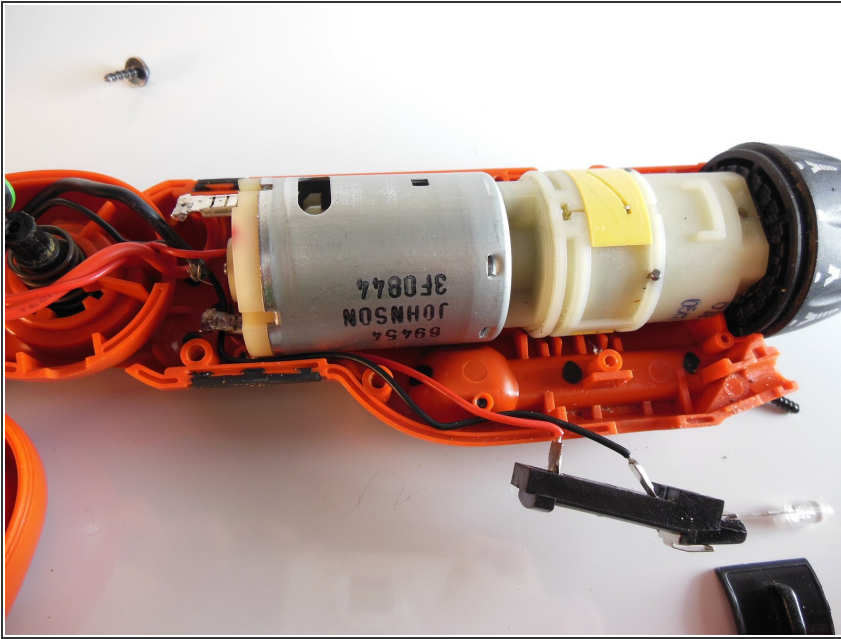
### Step 4



- Pull the black plastic piece up out of the slot in the drill body that it fits into.

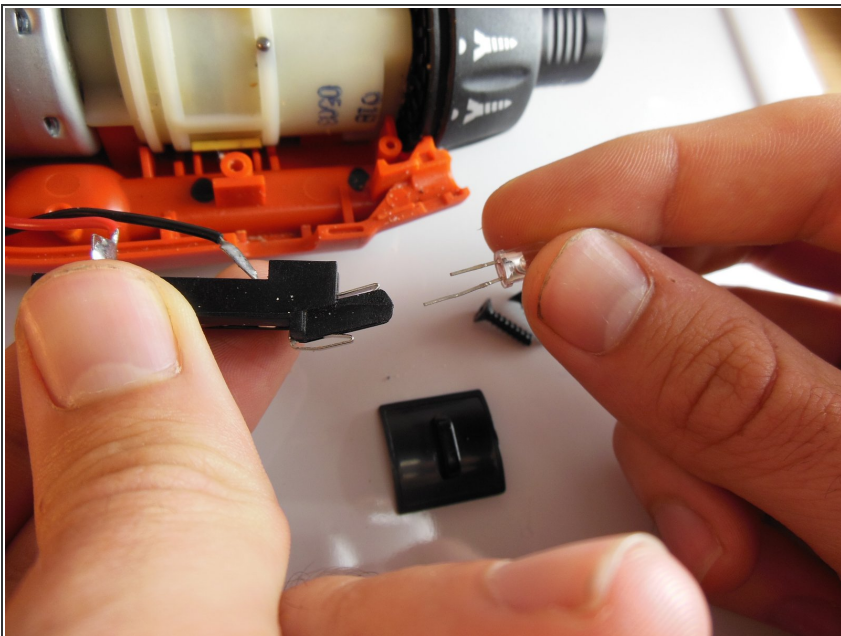


## Step 5



- The light itself can be easily removed from the black plastic piece by simply pulling it out.
- ❗ One of the metal “legs” on the LED is longer than the other and it must be placed in the black plastic housing in the same manner it was removed or it will not work.

## Step 6



- Take your new LED and slide it back into the plastic housing in the same orientation as the old LED.

To reassemble your device, follow these instructions in reverse order.