



Toshiba Satellite L455-S5975 LCD Display Replacement

In this guide, you will learn how to remove and replace the display screen.

Written By: Mike Kennedy



INTRODUCTION

This guide is useful for replacing a broken LCD screen on your laptop. If you are reading this from a laptop, you are looking at an LCD screen. In this replacement guide, you will remove the old LCD panel and install a new one.

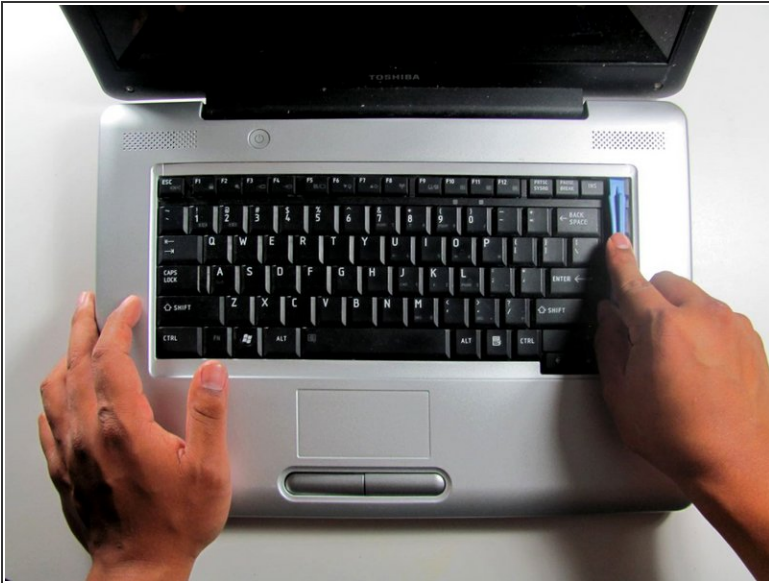
Note: Before starting any removal or installation, remember to turn off the device and to remove it from the power source.



TOOLS:

- [Phillips #00 Screwdriver](#) (1)
 - [iFixit Opening Tools](#) (1)
 - [Spudger](#) (1)
-

Step 1 — Keyboard



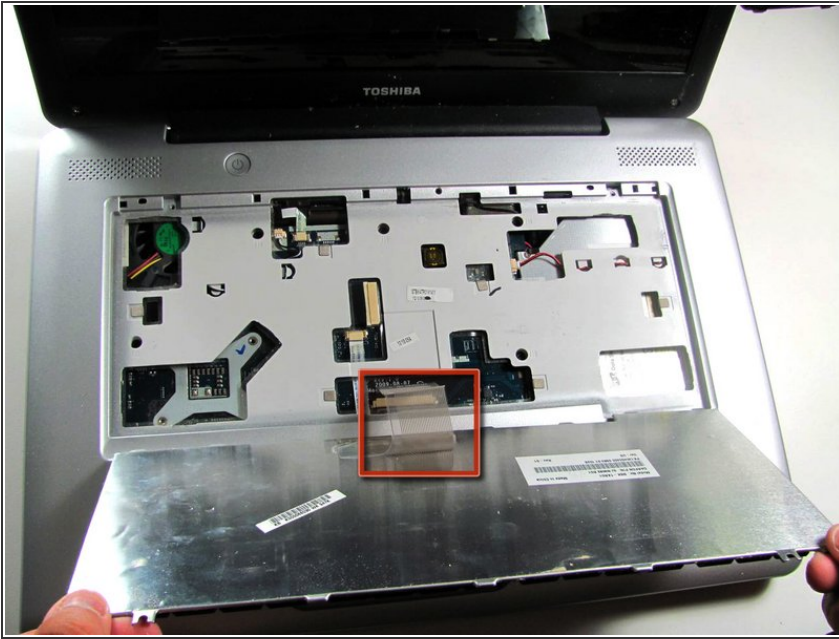
- i Before repairing your laptop, power down the system, disconnect the charger if necessary and remove the battery.
- Use the flat edge of the plastic opening tool to pry open the narrow plastic strip above the keyboard.

Step 2



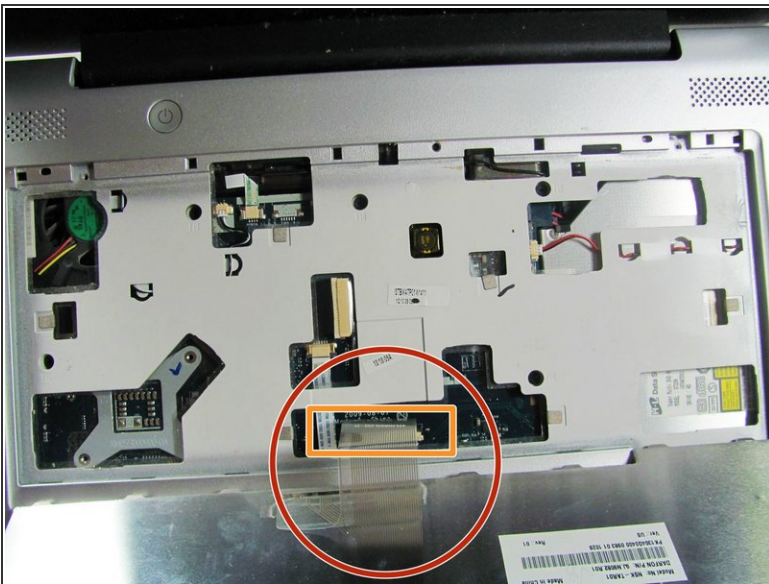
- Remove the three 3mm screws with a Phillips#00 Screwdriver.

Step 3



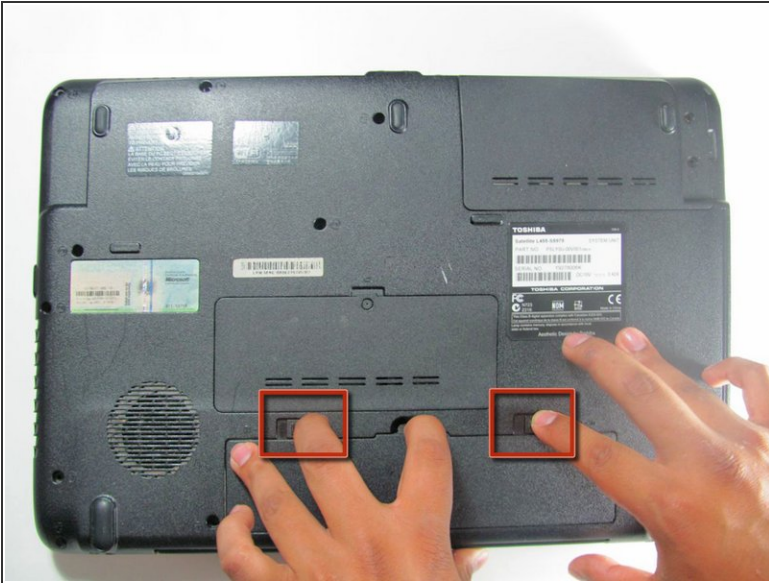
- Lift the keyboard away from the top side of the laptop.
- ⚠ Do not pull the keyboard away too hard. It is still connected by the fragile ribbon cable (shown in the red square).

Step 4



- Disconnect the keyboard cable that is still attached to the keyboard.
- Unlatch the fastener.
- Using your hands, pull the keyboard connector out, not up.

Step 5 — Fan



- Flip the laptop over to access the battery.
- Remove the battery by sliding fingers away from each other and lifting up the tab at the same time.

Step 6



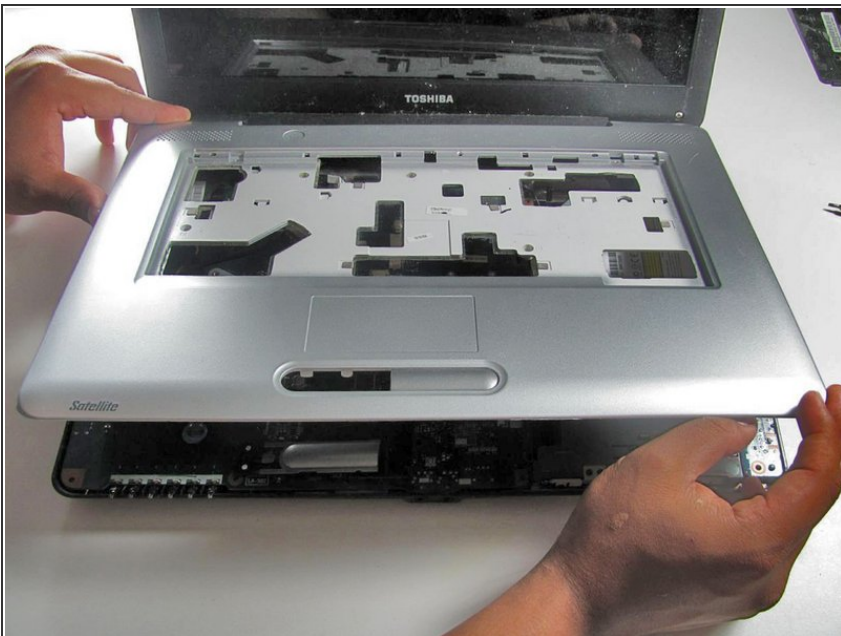
- Remove the twelve 10mm screws with a Phillips #00 screwdriver.
- Remove the cover over the hard drive (upper right in photo) and remove the four 10mm screws at the four corners.

Step 7



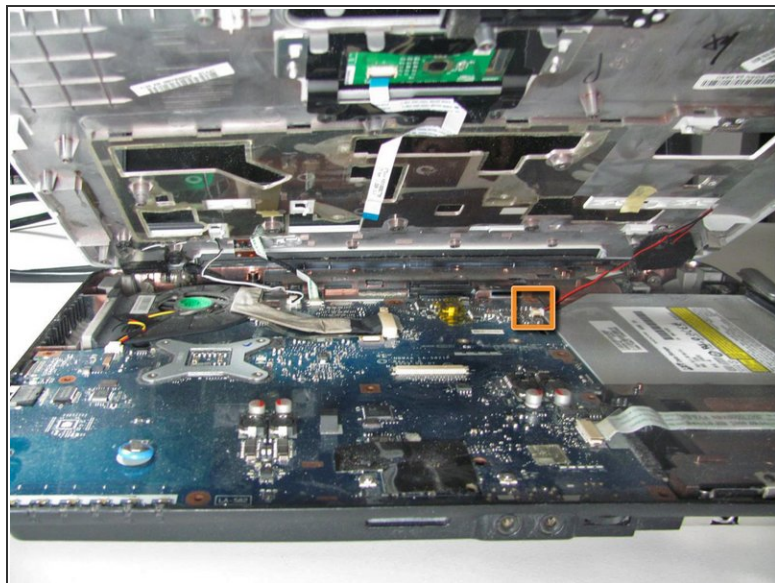
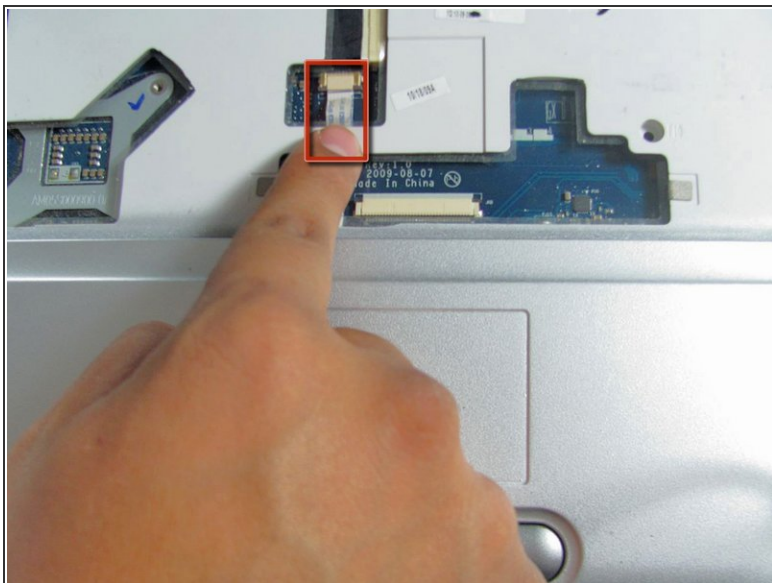
- Remove the three 4mm screws with a Phillips #00 screwdriver.

Step 8



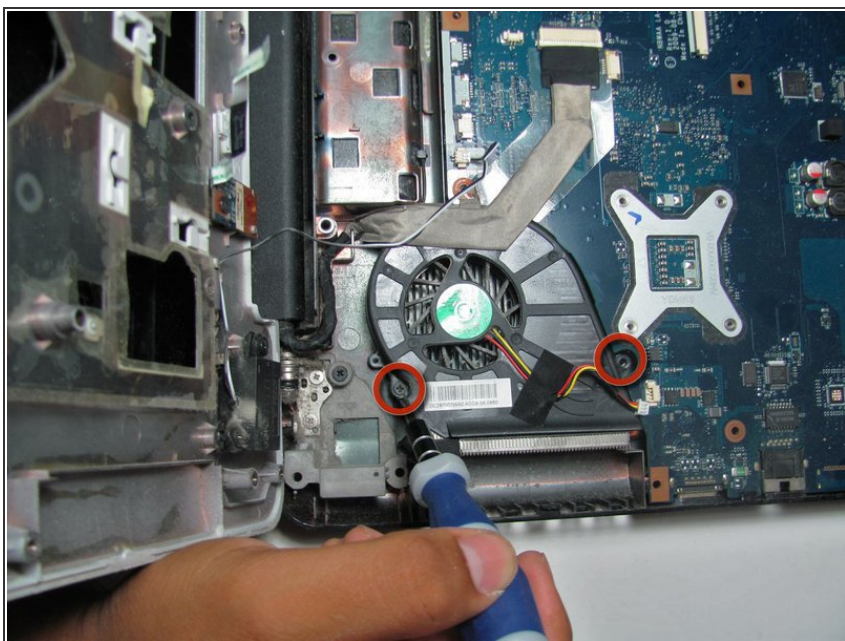
- Flip the laptop over so it's in the right-side-up position.
- Lift the grey plastic casing up and unhook any wires attached to the casing.
- Remove the five 10mm screws, each with a label 'F10' next to them.

Step 9



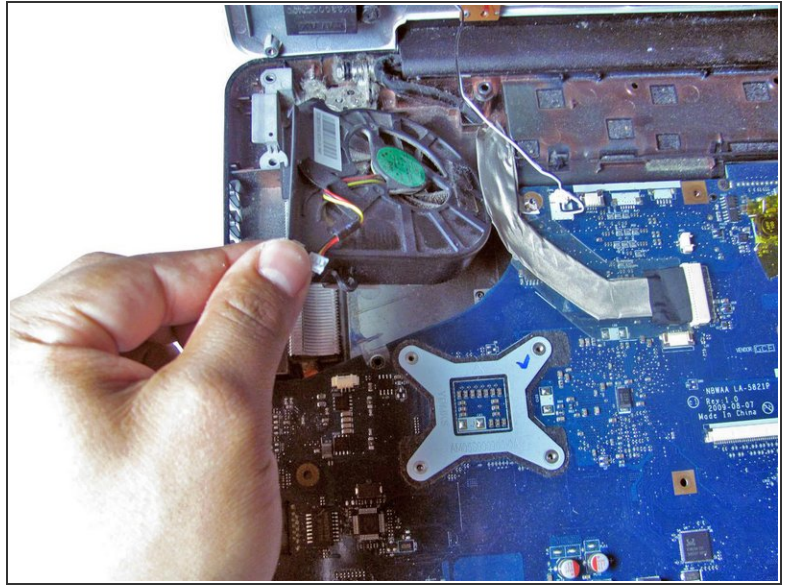
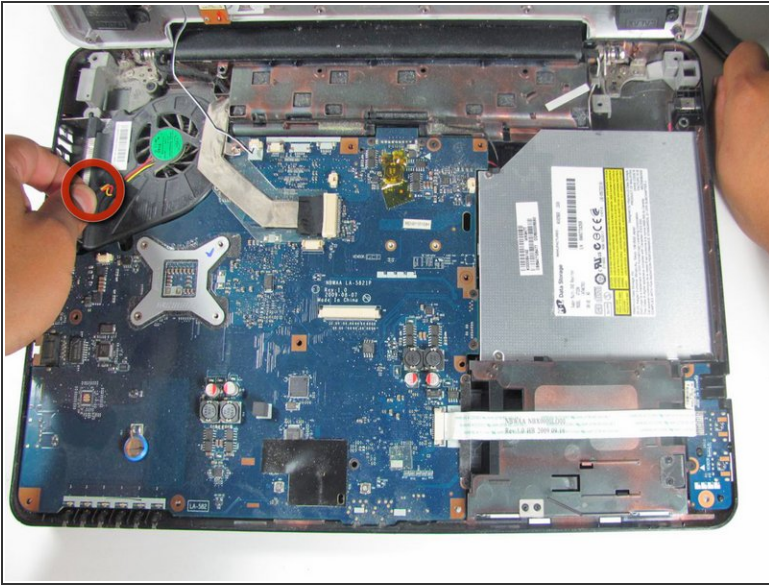
- Disconnect the flat thin wire connecting the track pad to the motherboard by pulling it straight out.
- Disconnect the thin red wire on the right side of the motherboard.

Step 10



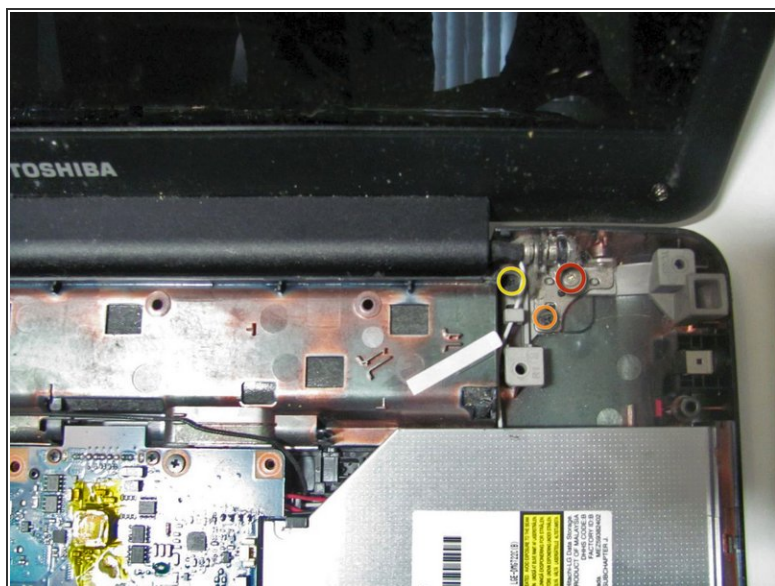
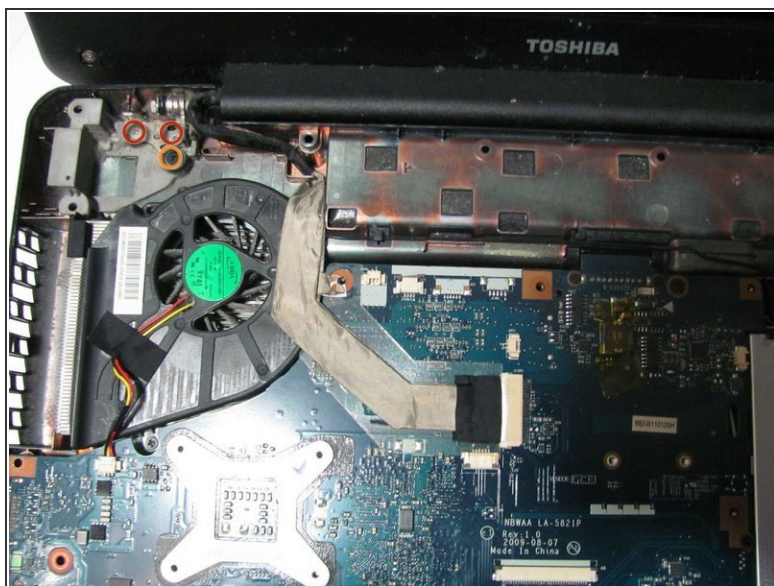
- Remove the two 6mm screws with a Phillips #00 screwdriver.

Step 11



- Disconnect the red and yellow wires connecting the fan to the motherboard by pulling the wires straight out.
- Remove the fan.

Step 12 — LCD Display



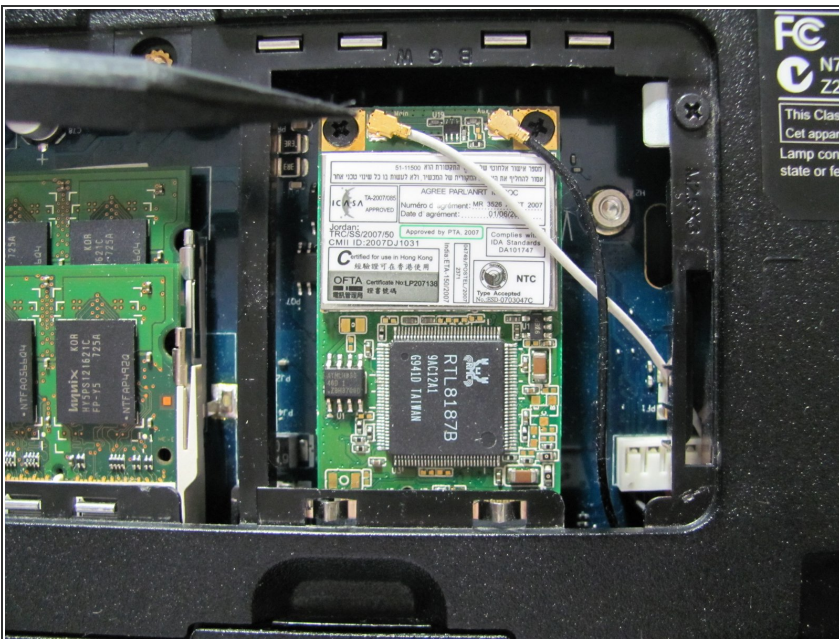
- Remove the following six screws located at the base of the monitor:
 - Three 5mm Phillip Head Screws
 - Two 6mm Phillip Head Screws
 - One 7mm Phillip Head Screw
- Disconnect the long thing grey cable that is attached to the motherboard by pulling it out.

Step 13



- Remove 2 plastic plugs using a spudger located behind the corners of the rotating part of the LCD.
- Remove two 5mm Phillips head screws located where the plugs used to be.

Step 14



- Remove the black and white wires connected to the LCD. The wires are located under the motherboard and can be accessed through the back panel of the computer.
- Use a spudger to remove wires by pushing the wires upward, away from the logic board.

Step 15



- Remove the LCD Screen

To reassemble your device, follow these instructions in reverse order.