



2015 Nissan Micra Interior Dome Light Replacement

If the interior car light of your 2015 Nissan Micra isn't working after you turn it on, you may need to get it replaced. This guide will show you how.

Written By: Sanjeev Visvalingam



INTRODUCTION

This guide will discuss the process of replacing the interior dome lights of a 2015 Nissan Micra car. Replacing the light bulb inside the dome light is a simple enough task so your experience with cars is irrelevant. What is important however, is the knowledge on how to replace these lights. You will need a W5W lightbulb for your interior car light as well as an opening tool in case things get stuck. One thing to look out for is the heat of the lightbulb since you'll be removing it with your hands. Just follow the steps and you'll have bright interior lights in no time.



TOOLS:

- [iFixit Opening Tool](#) (1)



PARTS:

- [W5W lightbulb](#) (1)

Step 1 — Dome light

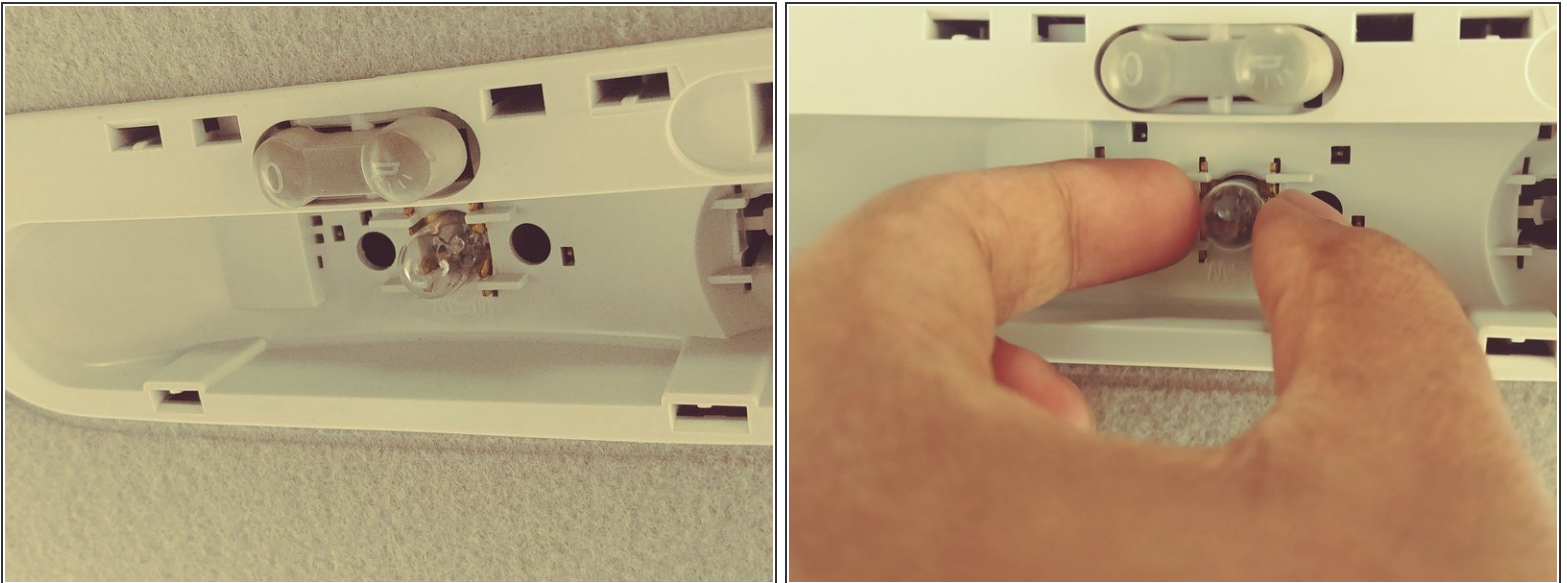


- Remove the plastic covering for the interior dome light. using your hands or an opening tool.

ⓘ There are clips securing the cover so be sure to undo them as you remove the cover.

⚠ Because of the delicacy of the covering, it is recommended that you use your hands, however even with your hands proceed with caution as to not break the lid and/or clips.

Step 2



⚠ Make sure the light bulb isn't hot before taking it out.

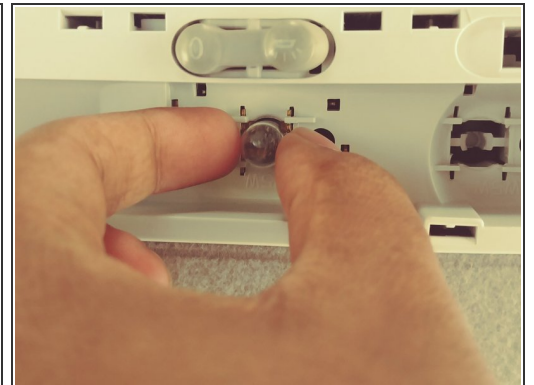
ⓘ If it's still hot, wait about 30 seconds to a minute and the bulb should cool down enough to take it out.

Step 3



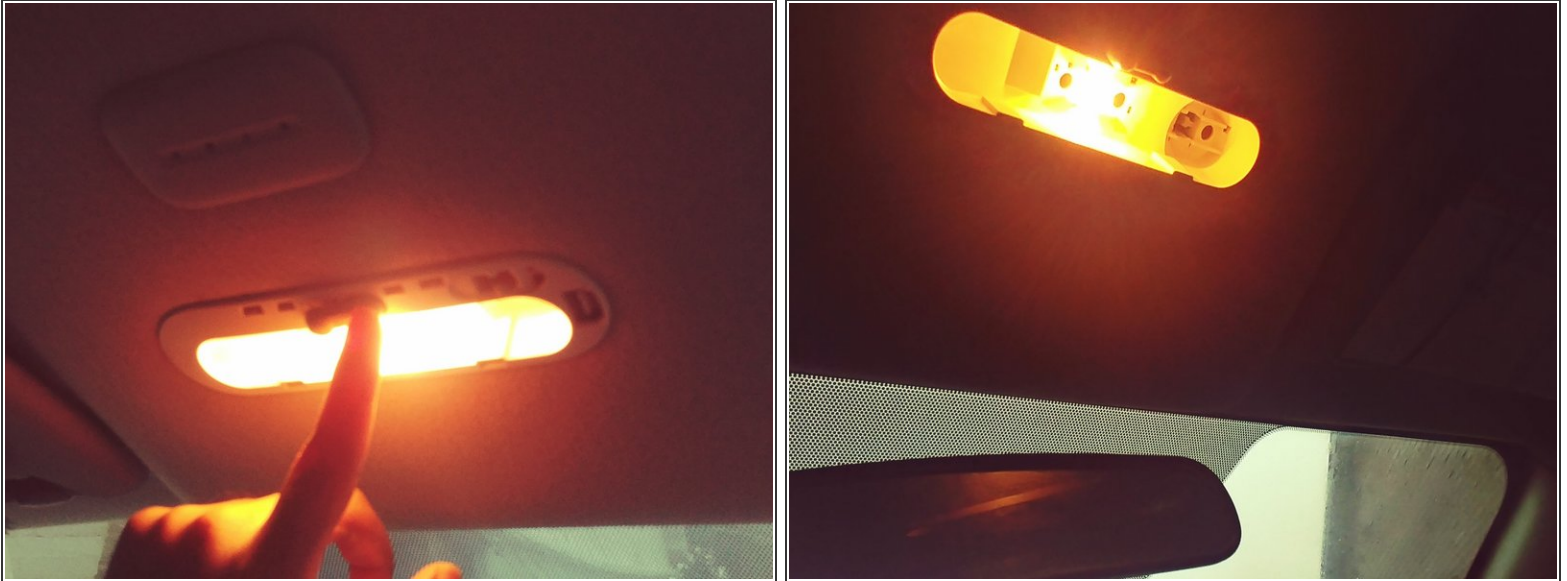
- Remove the light by pulling out the bulb from the socket.
- ❗ If you are having trouble pulling out the lightbulb, try lightly wiggling the bulb until it is loose enough to pull out.

Step 4



- ★ Replace the dead or broken bulb with a new bulb and insert it into the socket.
- ❗ The socket for a Nissan Micra is a W5W bulb.
- ⚠ When replacing the bulb, make sure you have the power switch off so you don't burn yourself.
- ⚠ The light bulb is delicate so when putting the bulb into the socket to not apply too much force or else you may break the bulb.

Step 5



- Turn on the light by pressing the switch to make sure the bulb and socket works.

i If it does work then your light should be shining similar to the photos shown.

Step 6



- Place the covering for the light back into place.
- There are six holes on the light assembly and each of them connects to a specific clip of the lid.
 - Use your fingers to press the lid into place and you are done, You now have a new light that'll light up your car.

To reassemble your device, follow these instructions in reverse order.