



LG Chocolate 3 Rear Case Replacement

Use this guide to replace the damaged or...

Written By: Brenna Yagade



INTRODUCTION

Use this guide to replace the damaged or cracked rear case of your LG Chocolate 3. You may just need to access the internals of your phone to do other work and this guide will help you do that too. Be prepared to manage small screws.

TOOLS:

[Spudger](#) (1)

[Phillips #1 Screwdriver](#) (1)

[Tweezers](#) (1)

Step 1 — Battery



- ① Turn the phone off before starting the replacement process.
- Place the phone face down.
- Press your finger down on the indentation and slide the back plate off.

Step 2



- Using your index finger lift and remove the battery from the phone.

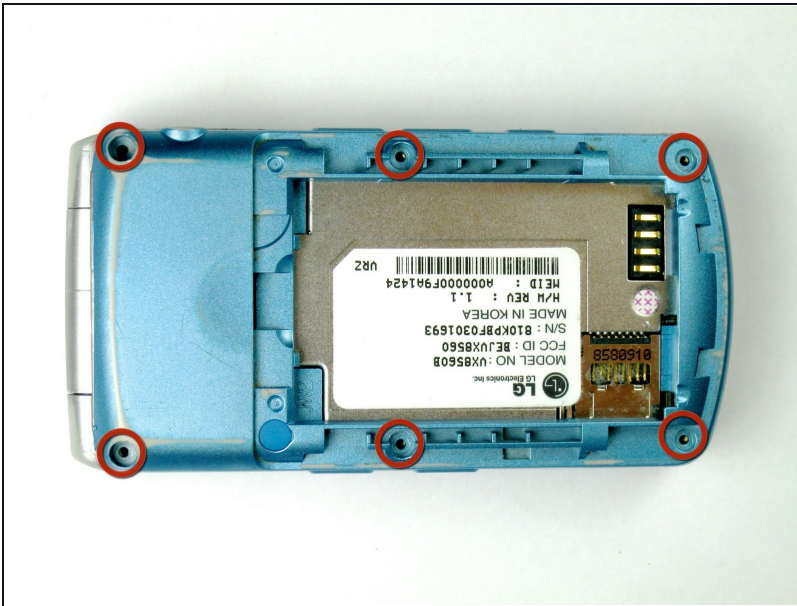
Step 3 — Rear Case



- Use the pointed end of the spudger to pull out the plastic inserts that are located on the left and right-hand corners.

- ① If needed, use the tip of a push pin instead of the spudger to remove the plastic inserts.

Step 4



- Using a Phillips #00 screwdriver, remove the six 3mm long screws found along the edges of the phone.

i If needed, use [tweezers](#) to remove loose screws from the recessed holes.

⚠ Screws are small, therefore, they should be placed in a secure location to prevent misplacement.

Step 5

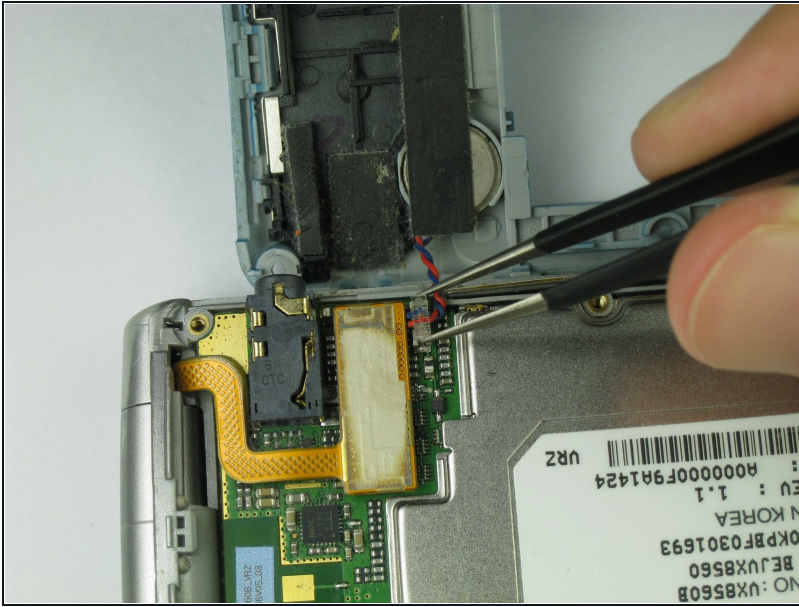


- Pull the rear case up using the spudger.

⚠ The rear case is connected to the right side of the phone via red and blue cables, be careful not to pull these cables out.

★ The volume control buttons on the side might fall out of their sockets. Carefully replace them with a pair of tweezers before you reassemble the rear case.

Step 6



- Use tweezers to pull the clear end of the red and blue speaker cables away from motherboard.

Step 7



- Carefully remove the rear case from the phone.

To reassemble your device, follow these instructions in reverse order.