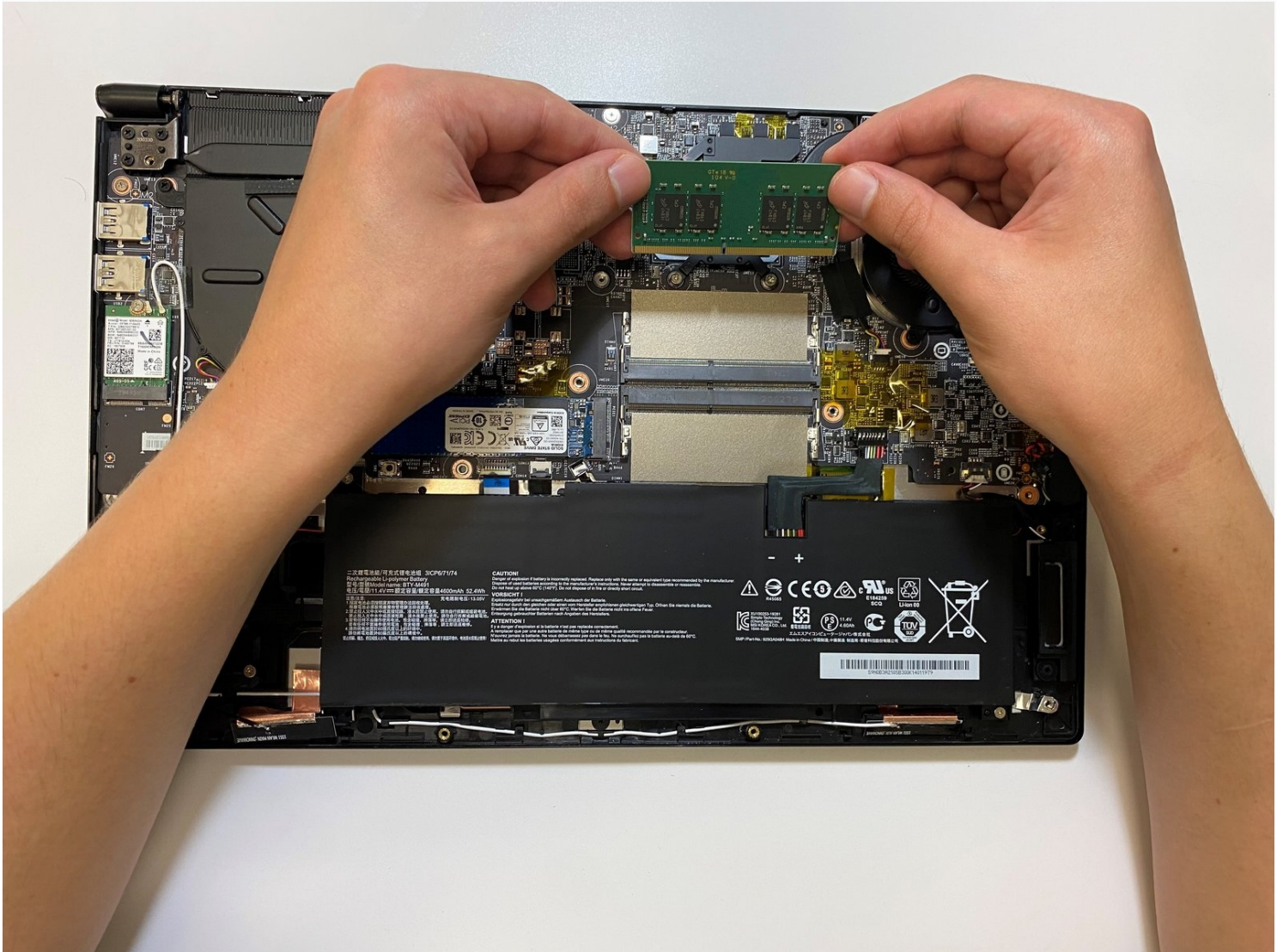




MSI Modern 15 A10M-242 15.6 RAM Replacement

This guide will show you how to replace the RAM...

Written By: Brian M. Williams



INTRODUCTION

This guide will show you how to replace the RAM in your MSI Modern 15 A10M-242 15.6 laptop if your RAM is corrupted. Some laptops come equipped with RAM that is not fast enough or becomes corrupt. Following these steps will make your MSI Modern 15 faster than out of the box. As a caution, this involves electronic hardware with a potential for hardware damage or injury.

TOOLS:

Plastic Cards (1)
Phillips #1 Screwdriver (1)
Safety Pin (1)

PARTS:

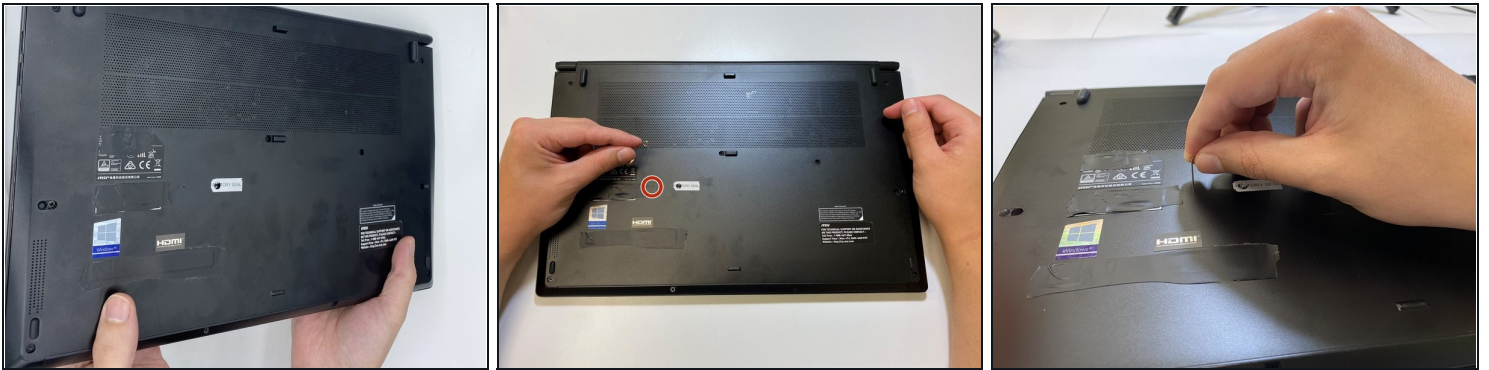
Crucial RAM 16GB DDR4 2666 MHz
CL19 Laptop Memory CT16G4SFRA266
(1)

Step 1 — Preparing the laptop for opening



- Turn off your laptop.
- Unplug your power adapter.
- Remove any USB devices that you have connected to your laptop.
- Close your laptop.

Step 2 — Hardware protection

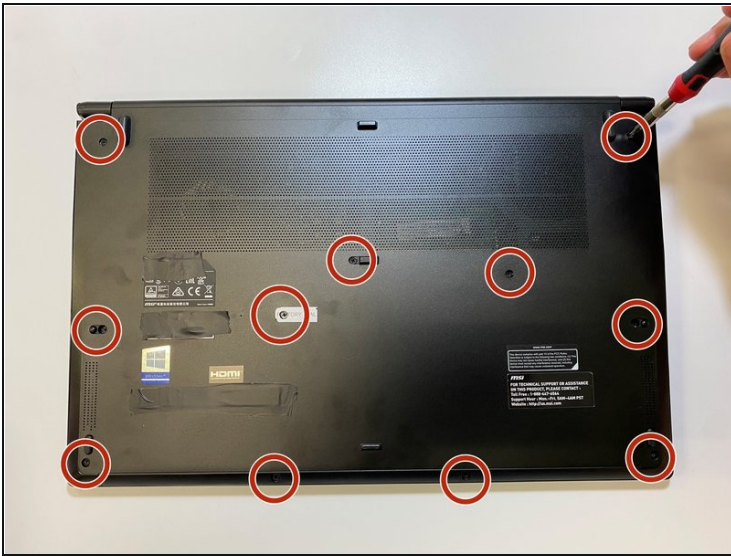


- Turn your laptop 180 degrees.
- Insert a safety pin in the "Reset EC" slot.

⚠ There is potential hardware damage to the laptop if "Reset EC" not performed.

- ① A safety pin has small enough diameter to fit into the "Reset EC" to perform this step.
 - ① Resetting the EC requires holding the RESET EC button for a full 30 seconds. Simply inserting the safety pin for a brief moment will not trigger a reset.
 - After performing a reset of the EC, your PC may not turn on using the power button if it's on battery power. In this case, you'll need to plug in the charger and wait for the laptop to turn on and to display. **This does indeed indicate that the RESET EC was successful.**
- ⚠ Wait for 5 minutes after Resetting EC, to ensure that all components are properly powered down, which can prevent accidental damage.

Step 3 — Unscrewing the laptop



- Remove eleven 1 mm screws using a Phillips #1 screwdriver.

① Phillips #1 is known also as PH1 in some screwdrivers set

Step 4 — Removing the back cover



- Turn your laptop vertically, so the monitor base is facing up.
- ① Before continuing this step, make sure you have unscrewed all 11 screws, including the one hidden under the "Factory Seal" sticker. Ignoring this may cause you to break the back cover of your laptop by missing a screw that prevents it from opening properly.
- Insert the [plastic card](#) above the back cover plate along the spine and slide it through the side.
- ① You will hear a popping sound as the card slides through the laptop. This is the plastic hinges unlocking as it slides through.
- ⚠ **Warning:** Use a plastic card or spudger to open your laptop back cover. Using metal or hard material for this step will likely cause severe damage to the laptop if you are not a professional.
- Remove the back cover.

Step 5 — Disconnecting the battery



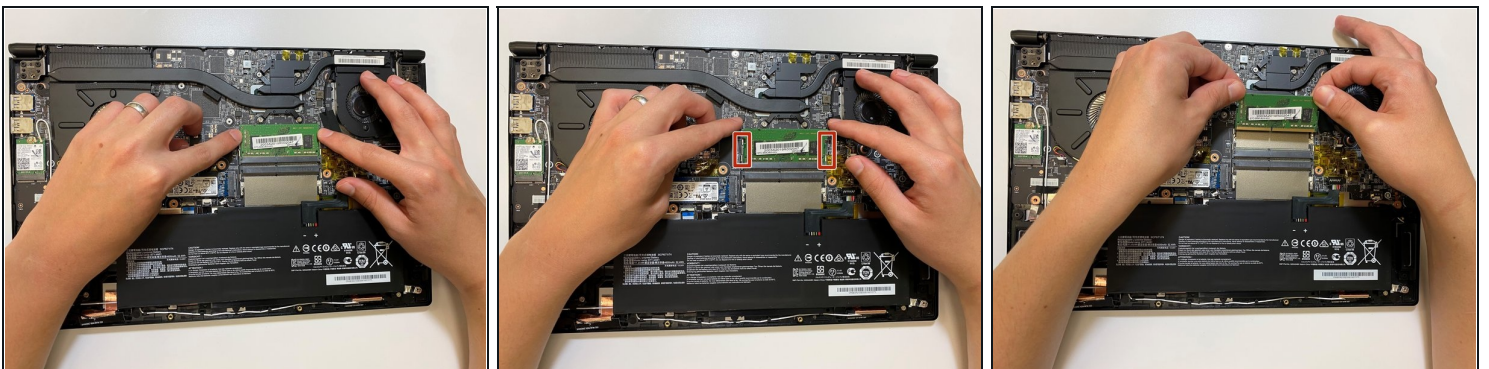
- Unplug the battery cable connected to motherboard.

⚠ Failure to complete this step can result in electrical damage.

ⓘ This requires some force to unplug the cable.

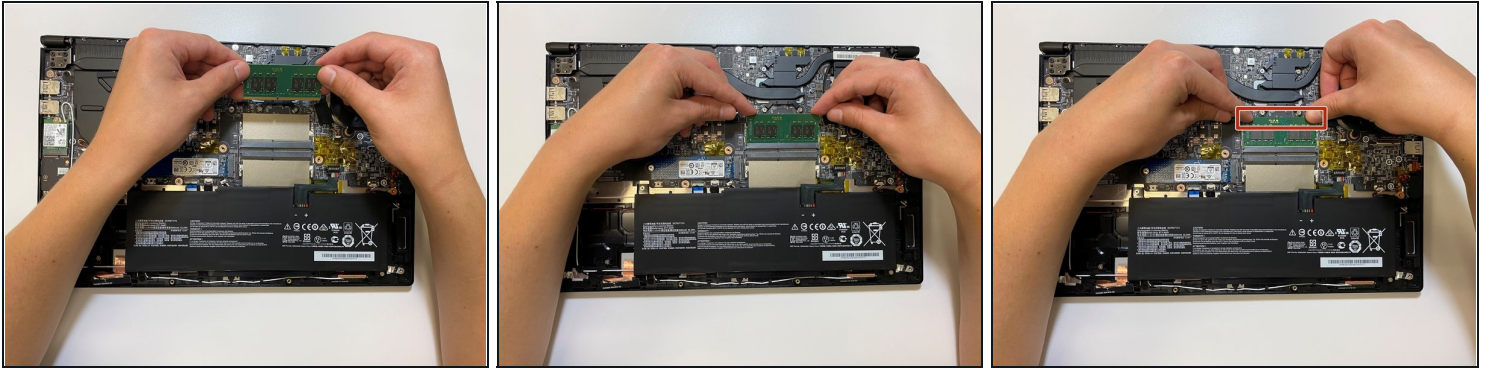
⚠ Hold the pin when unplugging the battery cable; pulling on the wires will cause damage to the battery cable.

Step 6 — Removing the RAM



- Place your fingers on side of the RAM slot.
- Push your fingers down on the side of the slot to release the RAM.
- Remove the RAM from the slot.

Step 7 — Inserting the RAM



- Line up the new RAM stick with the RAM slot.
 - Insert the RAM into the slot.
 - Press down on the RAM to lock it in place.
- ⓘ Press down firmly on the RAM. There will be a pop sound when the RAM is locked in place.
-

To reassemble your device, follow these instructions in reverse order.