



Motorola Cliq LCD Screen Replacement

Does your screen have a case of the black blobs...

Written By: Tony Tran



INTRODUCTION

Does your screen have a case of the black blobs or rainbows? Use this guide to replace a damaged or broken LCD Screen on the Motorola Cliq. You will need to be ready to handle many small parts. This part is very intensive and requires the most work.

TOOLS:

[iFixit Opening Tool](#) (1)

[Spudger](#) (1)

[T4 Torx Screwdriver](#) (1)

Step 1 — Battery



- Turning over your phone, place two fingers on the back cover and apply pressure away from the camera to slide the back cover off.

Step 2



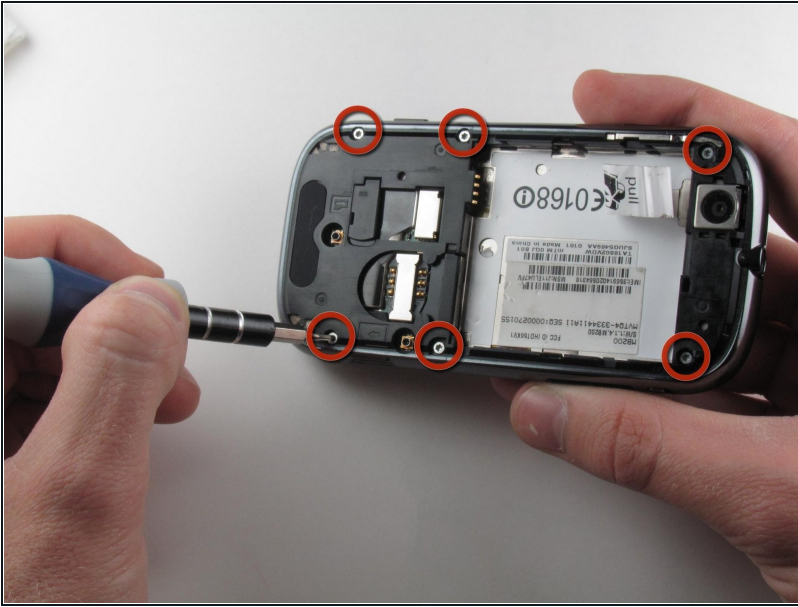
- Pinch the battery pull tab located below the camera, pull it upwards, and remove the battery.
 - ① The pull tab may be tucked under the battery.

Step 3 — Rear Casing



- Wedge a plastic opening tool behind the panel covering the camera, pry it up, and remove it using your fingers.
 - ① The panel is held down by adhesive and may require you to wedge and pry the right side of the panel before it can be easily removed.

Step 4



- Remove the six 4.0 mm T4 Torx screws which line the edge of the back of the phone.

Step 5



- Turn the phone over and slide out the keyboard.
- Wedge a plastic opening tool where the keyboard meets the back casing of the phone next to the headphone jack.
- Carefully pry open the back casing along the keyboard's edge until at least two corners of the back casing are separated from the keyboard.

⚠ Do not fully separate the rear panel from the phone. A cable is connecting the two parts together.

Step 6



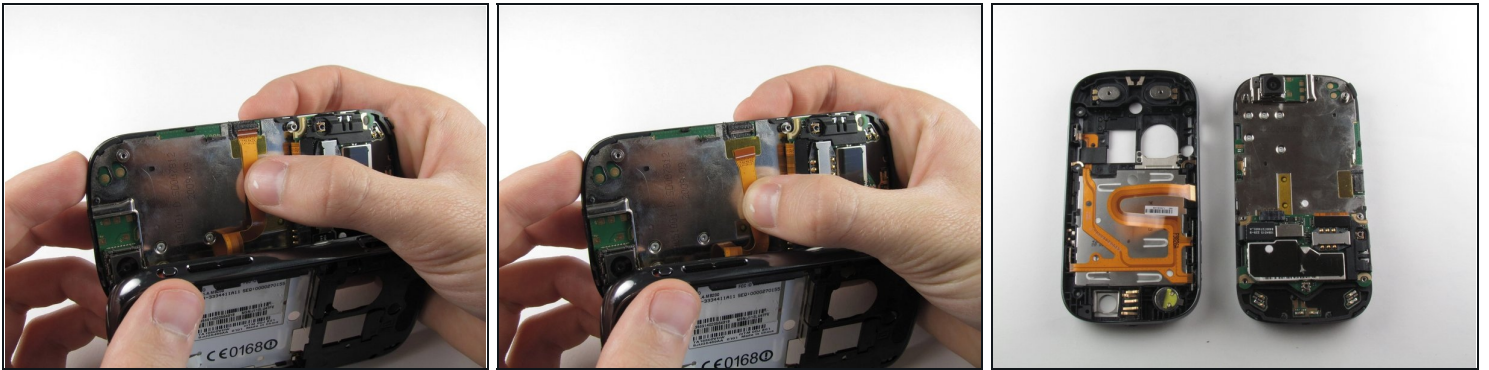
- Carefully separate the back casing from the rest of the phone.

Step 7



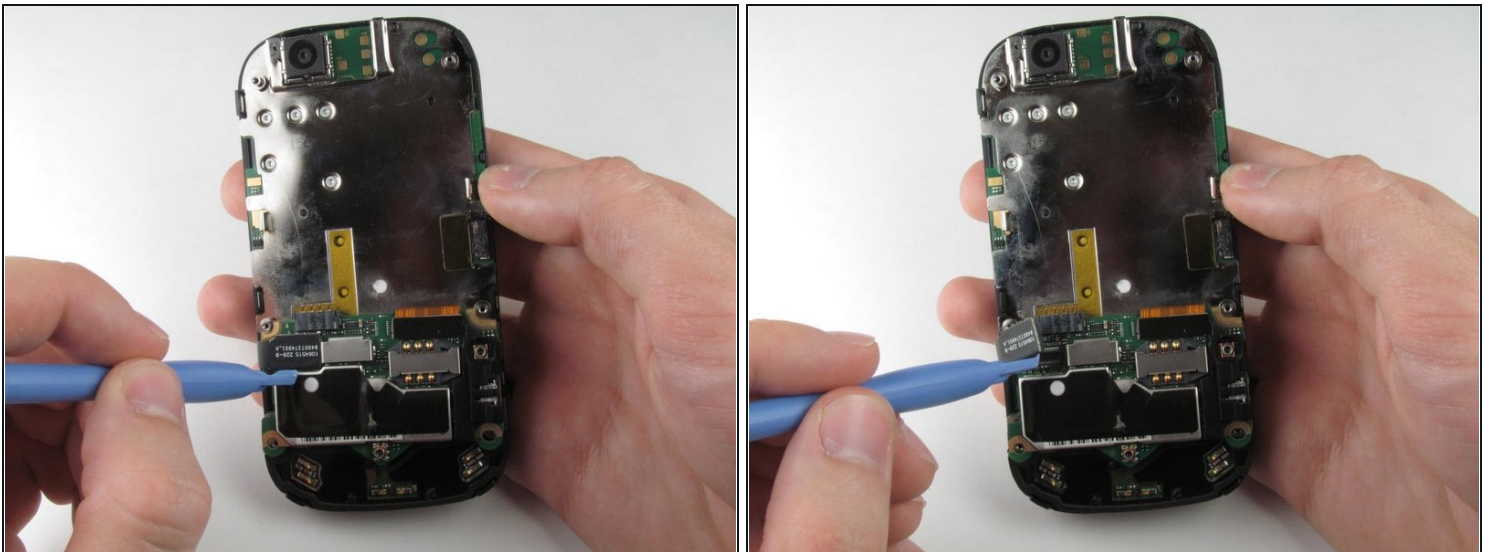
- Gently pry ZIF connector upwards using the flat end of a spudger tool.
 - ⚠ The ZIF connector is glued down. Be gentle! Ripping it off or breaking it will make your phone inoperable.
 - ☑ You may need adhesive to keep your power cable in place when reassembling your phone.

Step 8



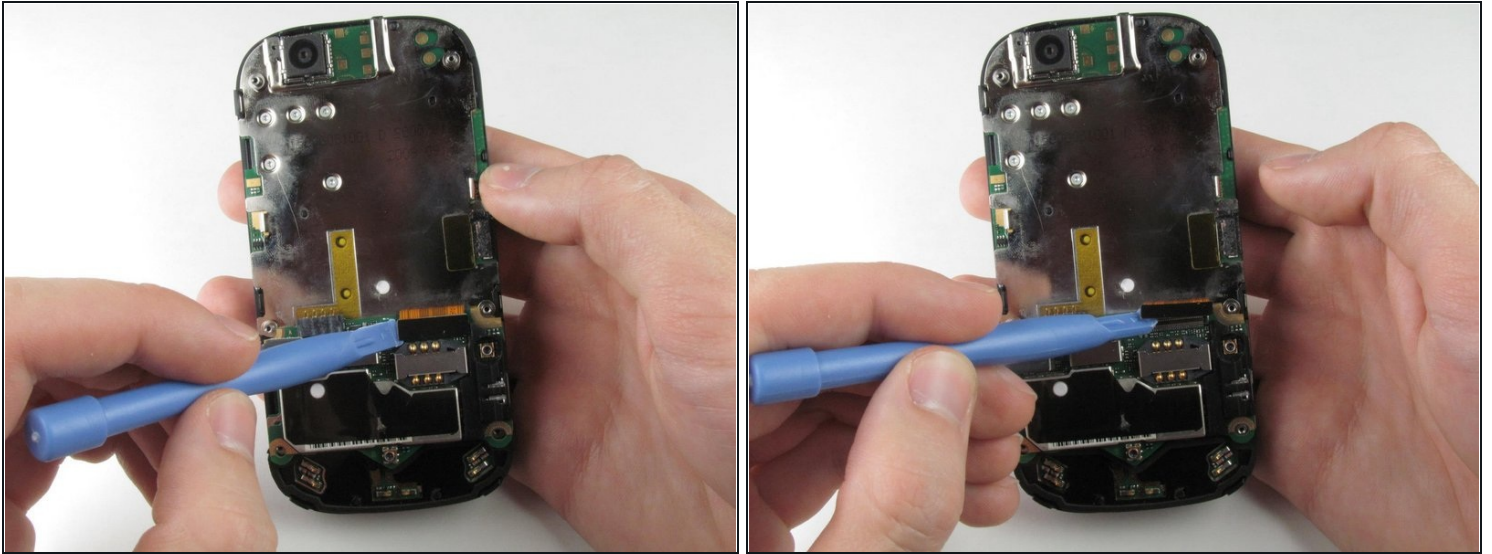
- Press your thumb against the orange power cable and pull it down slowly to disconnect the power cable from the bottom of the keyboard.
- The rear casing and the rest of the phone should now be completely separated.

Step 9 — Motherboard



- Wedge the plastic opening tool underneath the black display connector and pry it off its socket on the motherboard.

Step 10



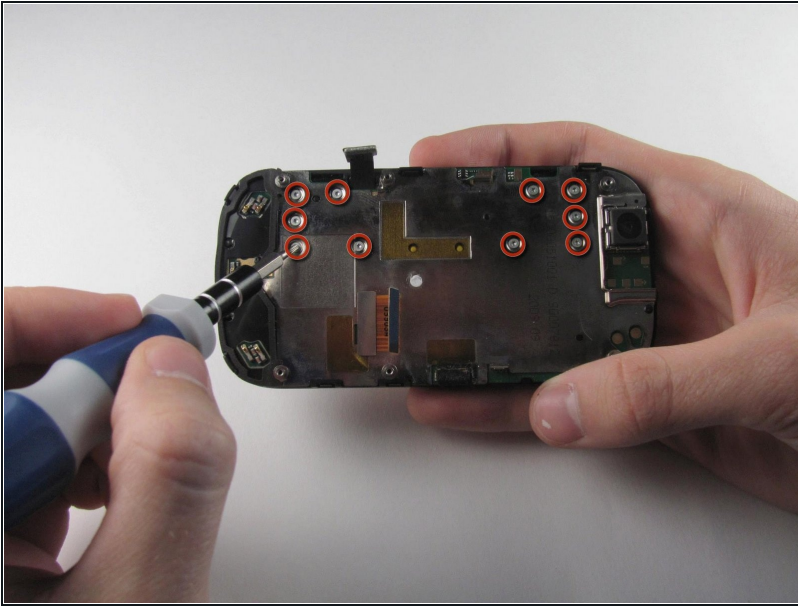
- Pry the orange keyboard connector from its socket on the motherboard using the edge of the plastic opening tool.

Step 11



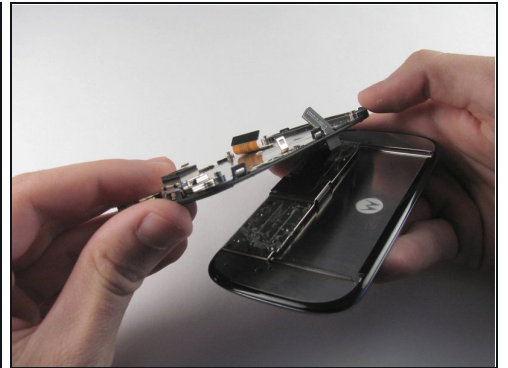
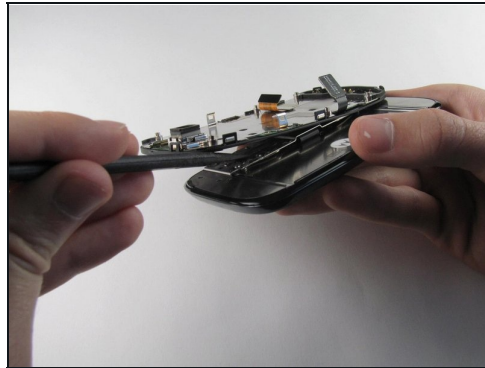
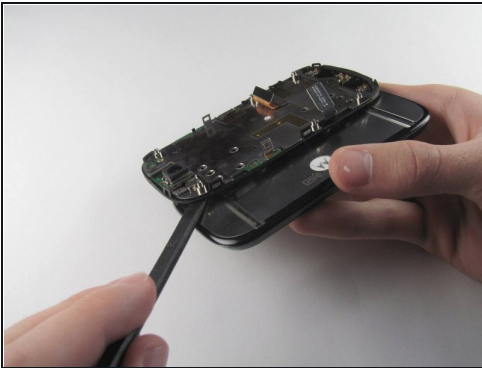
- Carefully grab the sides of the motherboard with your fingers and remove it from the phone.

Step 12 — LCD Shield Plate



- Remove the ten 3.0 mm T4 Torx screws near the black display cable.

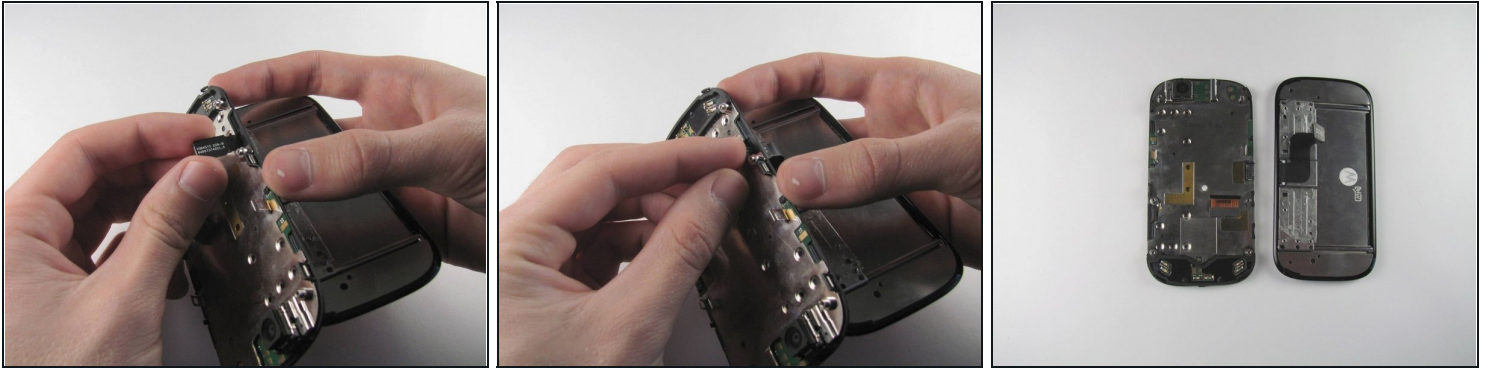
Step 13



- Orient the phone so that the edge closest to the camera points towards you and slide out the keyboard.
- Wedge the tip of a spudger between the keyboard and the display assembly below the camera.
- With steady pressure, pry the keyboard away from the display assembly.
 - ⓘ The keyboard and display assembly are glued together, so expect some resistance.

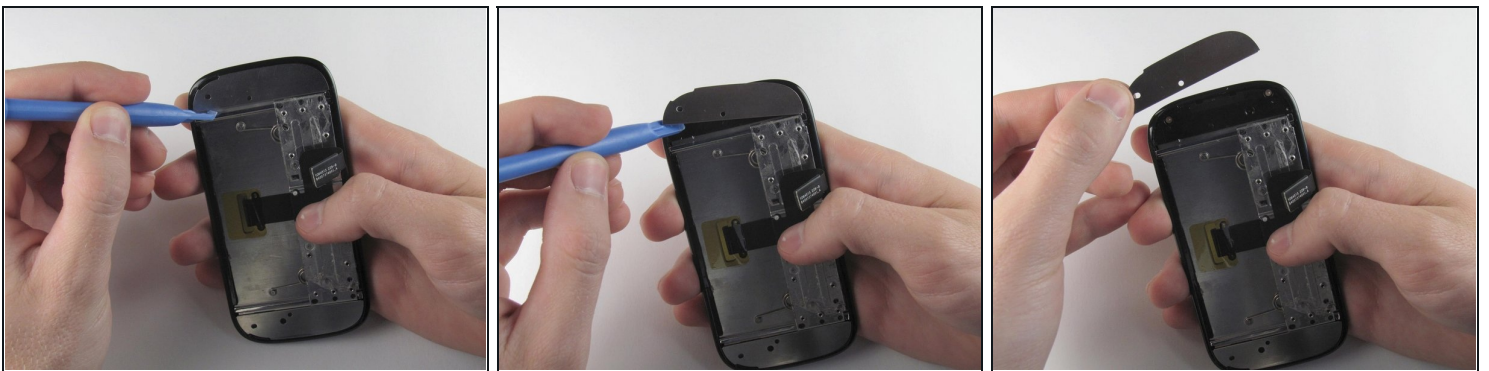
⚠ Do not completely separate the keyboard and display assembly because the display flex cable still connects them.

Step 14



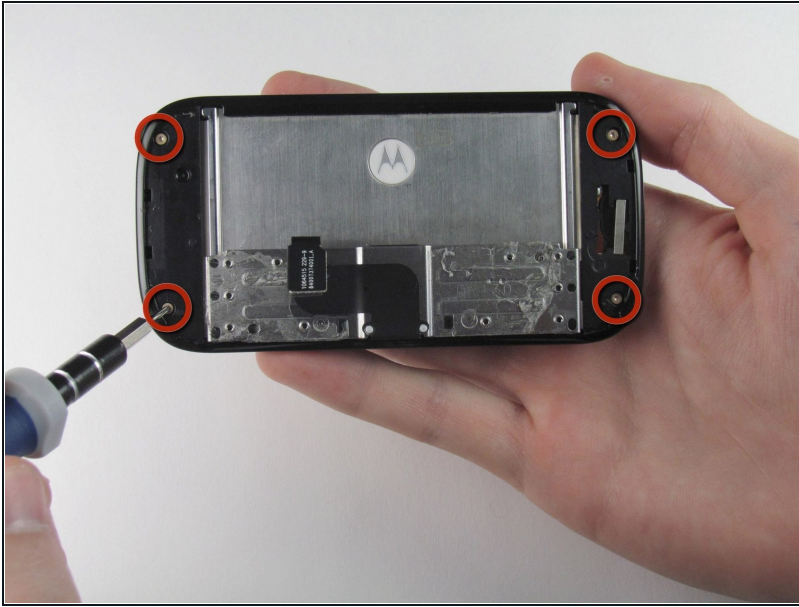
- Grab the display flex cable and gently push it through the notch it is coming out of.

Step 15



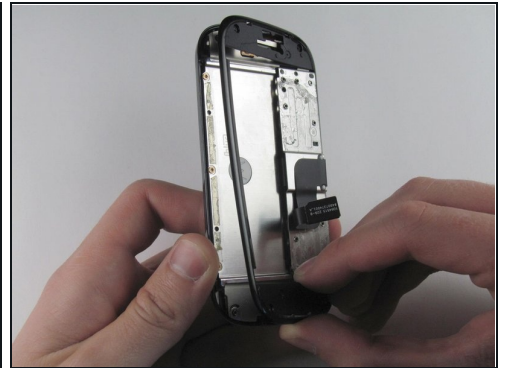
- Wedge a plastic opening tool underneath one of the metal panels on the underside of the display assembly.
- Pry upwards and remove the metal panel.
- Repeat this step for the second metal panel located on the opposite side of the phone.

Step 16



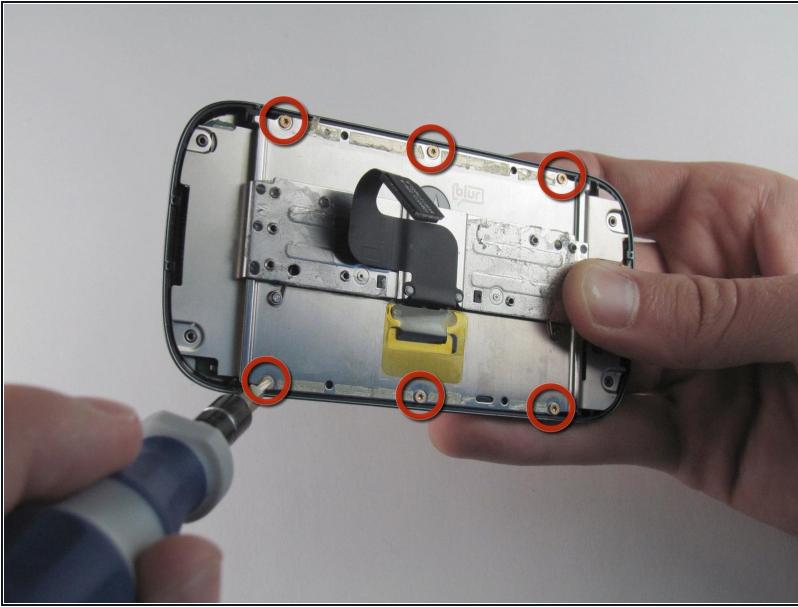
- Remove the four 3.0 mm T4 Torx screws at the corners of the phone.

Step 17



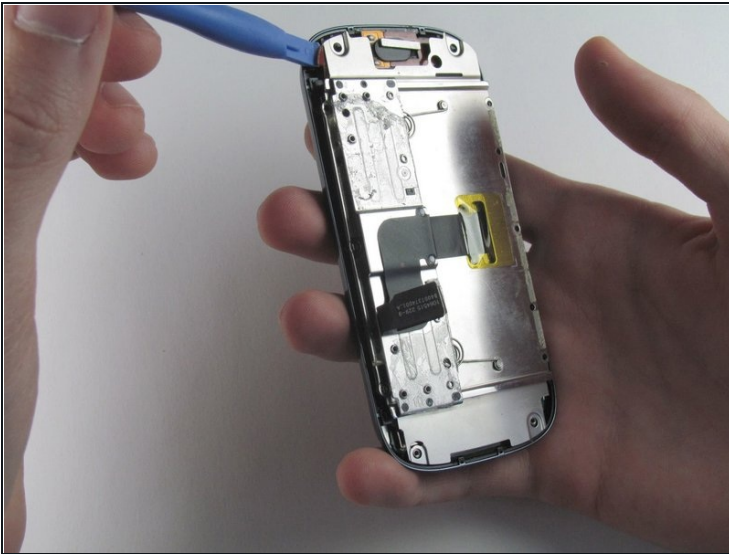
- Wedge a plastic opening tool between the edge and the black plastic cover on the underside of the display assembly.
- Run the plastic opening tool along the edges to separate the black plastic cover from the display assembly.
- Remove the black plastic cover.

Step 18



- Remove the six 3.0 mm T4 Torx screws that align on the phone's sides.

Step 19



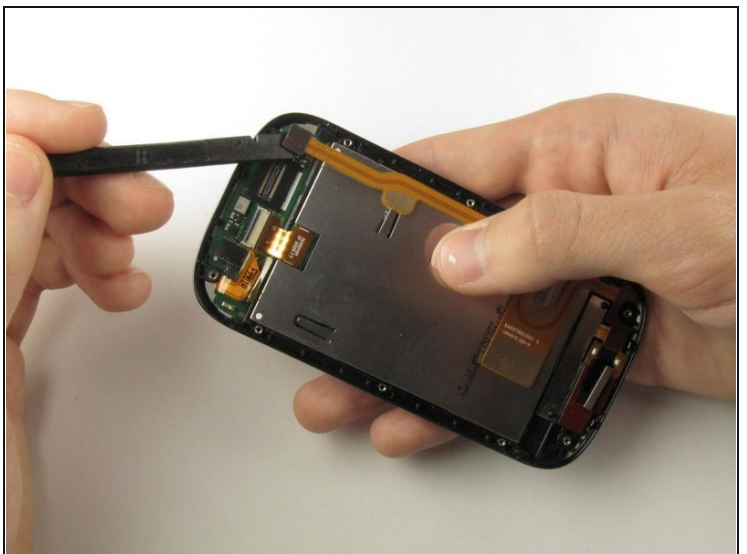
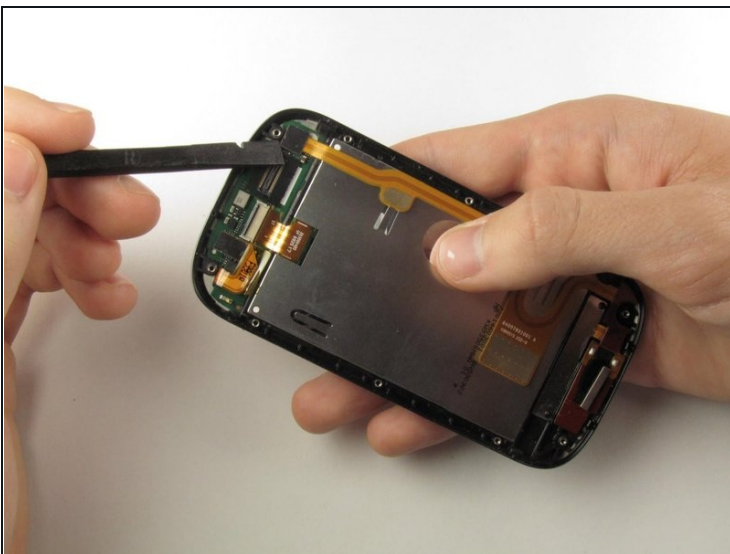
- Insert a plastic opening tool between the LCD shield plate and a corner of the keyboard slider plate.
- Pry apart the keyboard slider plate and LCD shield plate.
⚠ Do not completely separate them: the keyboard slider plate is still connected to the LCD shield plate via the display flex cable.

Step 20



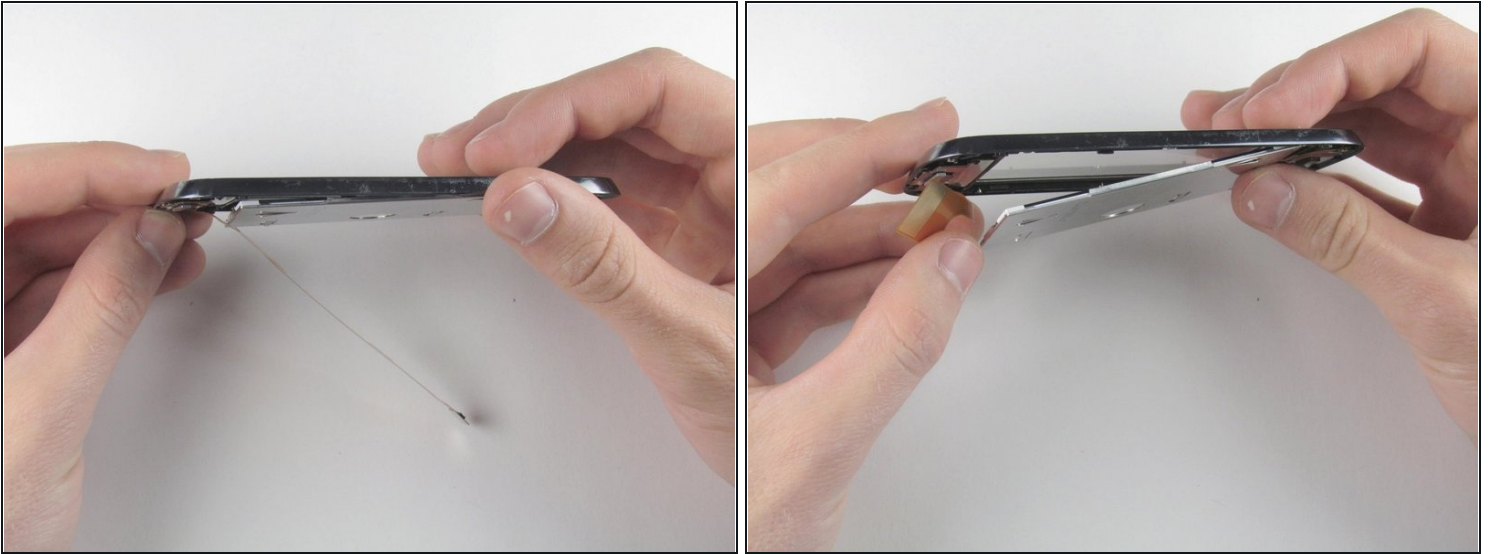
- Pry the display flex cable from its connector on the LCD shield plate with a plastic opening tool.
- Separate the display flex cable from the LCD cover plate.

Step 21 — LCD Screen



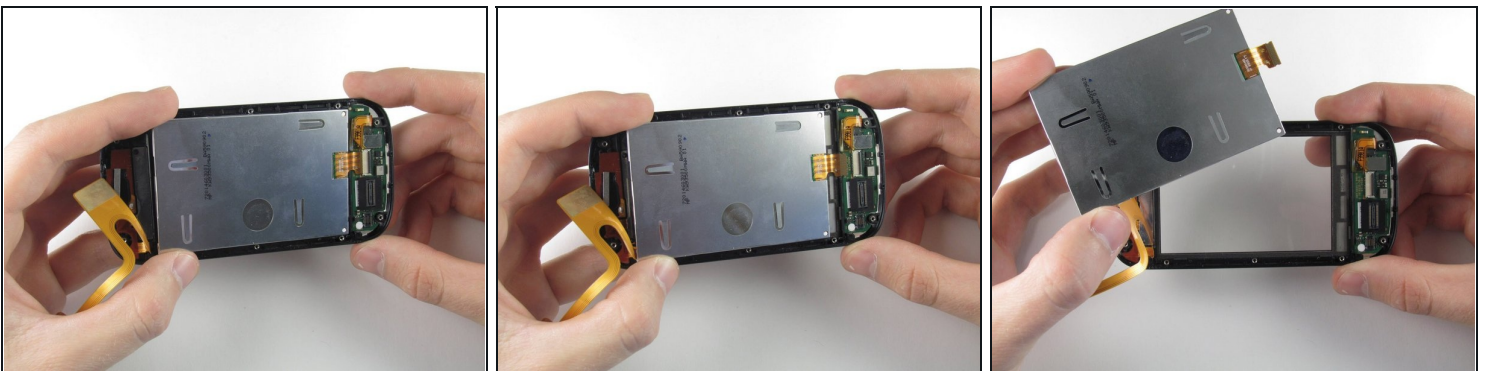
- Pry off the flex cable located at the top right of the display assembly using the flat end of a spudger.

Step 22



- Turn the display on its side.
- Carefully tilt the screen of the display until the digitizer starts to fall out.
⚠ Do not completely separate the digitizer just yet: it is still connected to the LCD case.

Step 23



- With the digitizer held between two fingers, gently pull it away from the bottom of the phone until the digitizer flex cable has been completely removed from its socket.
- Remove the digitizer.

To reassemble your device, follow these instructions in reverse order.