



OnePlus 6 Battery Replacement

This guide will serve as a shown step-by-step process for removing an old battery inside of the OnePlus 6.

Written By: John Steven Trammell



INTRODUCTION

If you are having problems with your OnePlus 6 not holding a charge or not powering on, use this guide to replace your phone's battery.

The battery of a phone is what gives the phone power and having a good battery is key to a long phone life.

From time to time, the battery life of a phone, even in the OnePlus 6, may be depleted over time and cause you some frustration. These problems can come from a variety of things like overloading the phone with too many apps running to simply having a faulty and depleted battery. Be sure to check out the [OnePlus 6 Troubleshooting page](#) to see if there is a easy fix before taking action to replace anything. If nothing is working, this step-by-step process will guide you through replacing your old battery with a new one so you can get your OnePlus 6 back to running like new.

The first step in this replacement guide is to remove the back panel of the phone, the back panel is made of glass so be careful not to shatter it. Also, be on the lookout for a [swollen battery](#) as it can be a fire and explosion hazard.

Be sure to disconnect any power sources and shutting down the phone before beginning the replacement process.



TOOLS:

- [Heat Gun](#) (1)
- [iFixit Opening Picks \(Set of 6\)](#) (1)
- [Tweezers](#) (1)



PARTS:

- [OnePlus 6 Replacement Battery](#) (1)
- [Precut Adhesive Card](#) (1)

Step 1 — Back Panel



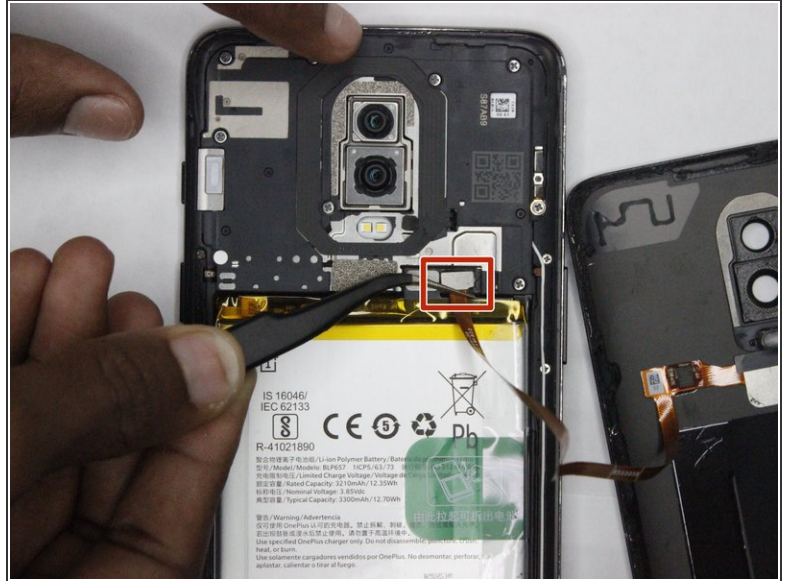
- Turn on the heat gun to a low heat and gently heat the curved edges on the back of the phone.
⚠ Be careful not to overheat or melt the plastic; heat guns can get out of hand quickly!
- Wedge the opening picks between the front and back panel and slide them around the perimeter to break the adhesive securing the back cover.
- Repeat until the back panel is fully released.

Step 2



- Gently lift up the back panel, with care not to damage the fingerprint sensor ribbon cable.

Step 3



- Use a pair of tweezers to gently pull up on the red tab and disconnect the cable from the device.
- Completely remove the back panel from the device.

Step 4 — Battery



- Grip the green tab connected to the battery and pull the battery directly up and out.

To reassemble your device, follow these instructions in reverse order.

For optimal performance, after completing this guide, [calibrate](#) your newly installed battery.

Take your e-waste to an [R2 or e-Stewards certified recycler](#).