



OnePlus 6 Midframe Replacement

This guide will help you remove and replace the midframe in the OnePlus 6.

Written By: Mickenzie Thompson



INTRODUCTION

Use this guide to gain access to hardware of your OnePlus 6 smartphone. The midframe of the phone is what keeps important hardware in place at the top of the phone, such as things like the camera, motherboard, and the power buttons.

Ofentimes when you cannot access the camera, the phone is it using another application, not allowing you to use the camera, so be sure to close out any interfering apps. Side buttons also may not seem to work because of a software issue causing the phone to freeze or some debris getting in-between the button causing phone to not allow you to lock or turn the device on and off. Always check to see if there is any outstanding matter in any of the components prohibiting proper use.

Before using this guide, check out the [troubleshooting page](#) to see if there is something that you can do to resolve any issues with your camera or side buttons before opening up the phone.

The first step of this guide requires the removal of the back panel of the phone, which is made of glass. Be sure to be careful that you do not shatter it.

Before starting this guide, make sure to turn off the device and have no outside sources plugged into the phone.



TOOLS:

- [Heat Gun](#) (1)
 - [iFixit Opening Picks \(Set of 6\)](#) (1)
 - [Tweezers](#) (1)
 - [Phillips #00 Screwdriver](#) (1)
-

Step 1 — Back Panel



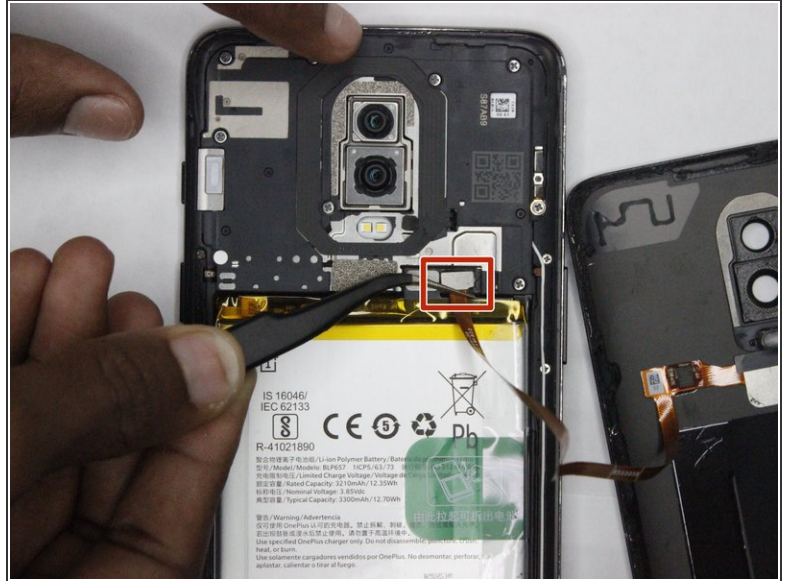
- Turn on the heat gun to a low heat and gently heat the curved edges on the back of the phone.
⚠ Be careful not to overheat or melt the plastic; heat guns can get out of hand quickly!
- Wedge the opening picks between the front and back panel and slide them around the perimeter to break the adhesive securing the back cover.
- Repeat until the back panel is fully released.

Step 2



- Gently lift up the back panel, with care not to damage the fingerprint sensor ribbon cable.

Step 3



- Use a pair of tweezers to gently pull up on the red tab and disconnect the cable from the device.
- Completely remove the back panel from the device.

Step 4 — Battery



- Grip the green tab connected to the battery and pull the battery directly up and out.

Step 5 — Midframe



i The midframe is made of plastic and located above the battery space.

- Using the Phillips #00 screwdriver, remove the ten 3 mm screws from the midframe.
- **ATTENTION** - Be aware that the screw at the bottom left is marked wrong in this picture. The actual 10th screw is actually underneath the round white sticker. Do not remove the screw marked at bottom left, but strip over the white sticker which has a screw underneath it. Otherwise you will damage your midframe board.
- Lift the bottom of the mid frame directly up and remove it from the device.

To reassemble your device, follow these instructions in reverse order.