



# PSP 300x Trigger Buttons Replacement

Steps for replacing the trigger buttons for the...

Written By: cmcevill



# INTRODUCTION

Steps for replacing the trigger buttons for the Sony PSP-3000.



## TOOLS:

- [Phillips #1 Screwdriver](#) (1)
- [Spudger](#) (1)



## PARTS:

- [Sony PSP 2000/3000 Trigger Buttons](#) (1)
- [Sony PSP 2000/300x Trigger Button Brackets](#) (1)
- [Sony PSP 3000 Wi-Fi Antenna](#) (1)

## Step 1 — Battery



- Place the PSP face down and locate the battery cover on the left side of the device.
- Lift and remove the battery cover to reveal the battery.
- Remove the battery.

## Step 2 — Casing



- Peel back the warranty sticker that is behind the battery with a spudger or your fingernail.

### Step 3



- Unscrew all four screws from the back of the PSP with the Phillips #00 Screwdriver.
  - Two are located behind the battery's warranty sticker.
  - Two are located on the right side of the PSP.

### Step 4



- Next, unscrew the two screws located at the top of the PSP.



## Step 5



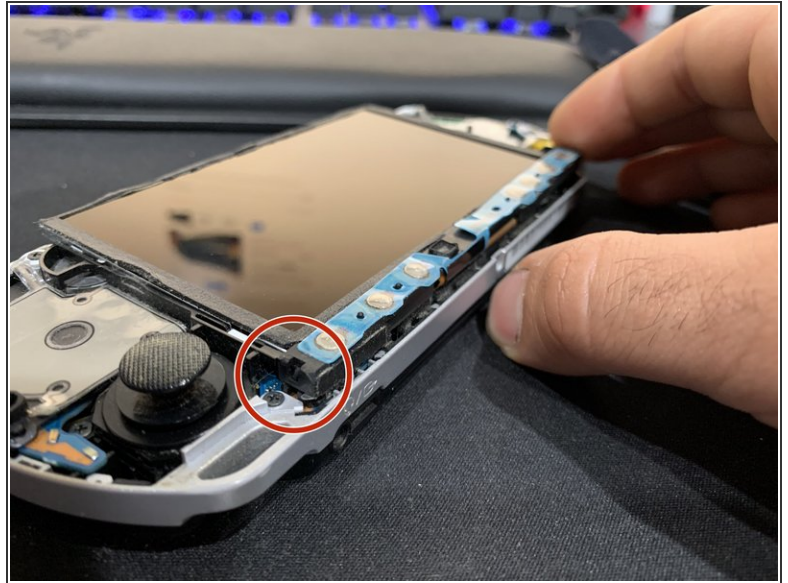
- Then, remove the single screw from the bottom edge of the PSP (which is positioned next to the barcode).

## Step 6



- Slide the spudger in between the outer casing of the PSP, beginning at the "R" shoulder button, and gently pry off the casing.
- Remove the front casing completely.

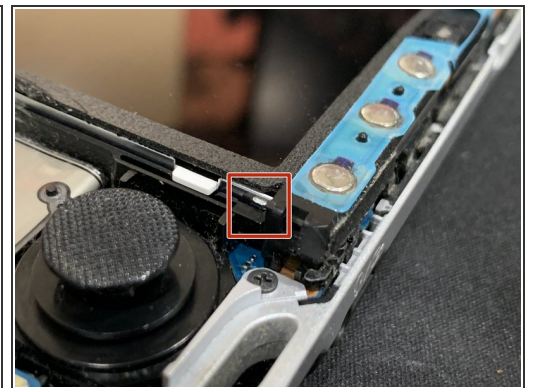
## Step 7 — LCD Screen



- Push the homebar to the right to release the tab located on the right side of the LCD screen.

⚠ DO NOT completely remove the homebar, as it is still connected by ribbon cables.

## Step 8



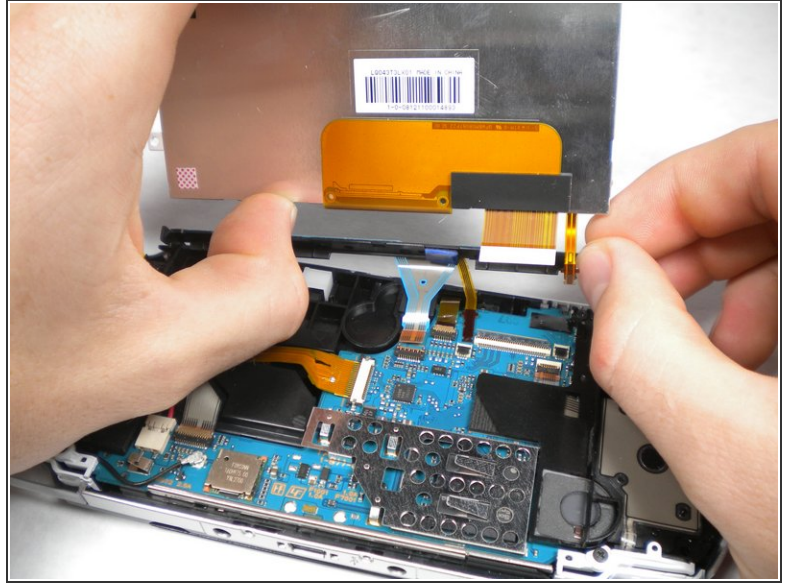
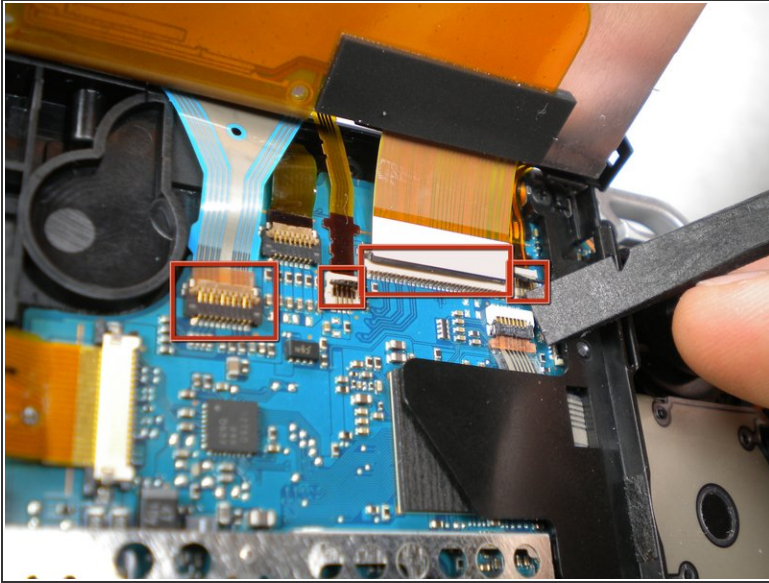
- Slowly lift the LCD screen off the PSP starting at the top edge corner.

⚠ Again, the LCD screen is attached by ribbon cables, so do not remove it completely.

ⓘ Orientation of PSP is flipped in photo.



## Step 9



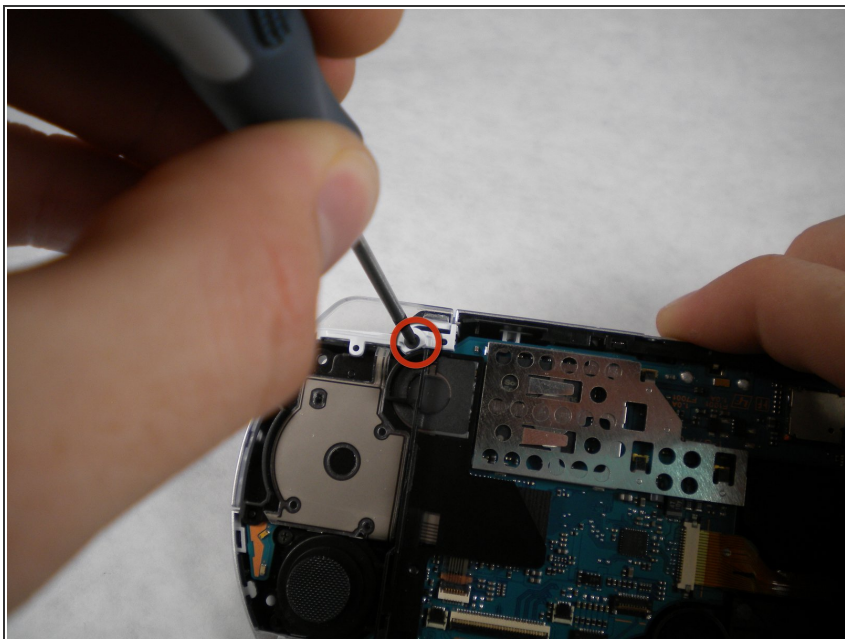
- Flip the small brown locks on the four ribbon cable connectors up using a spudger or fingernail.
- Pull all four ribbon cables out.
- Now remove the LCD screen and homebar from the PSP.

## Step 10



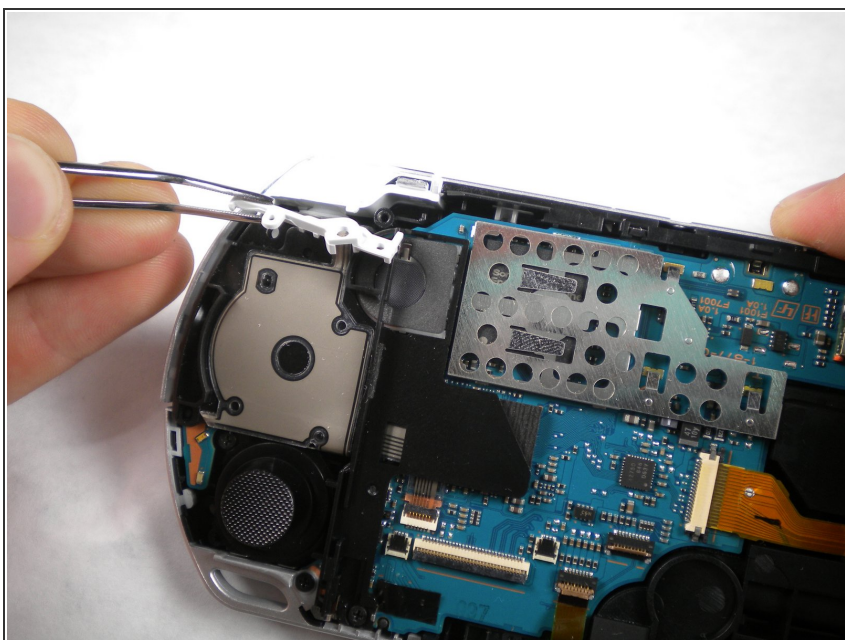
- Remove the metal tab that lies above the LCD screen.
- ☑ Upon reassembly, make note that the stamped lettering faces down, and the large tab fits just above the motherboard to the right hand side of the left trigger.

## Step 11 — Trigger Buttons



- Remove the screw securing 'L' trigger to the PSP.

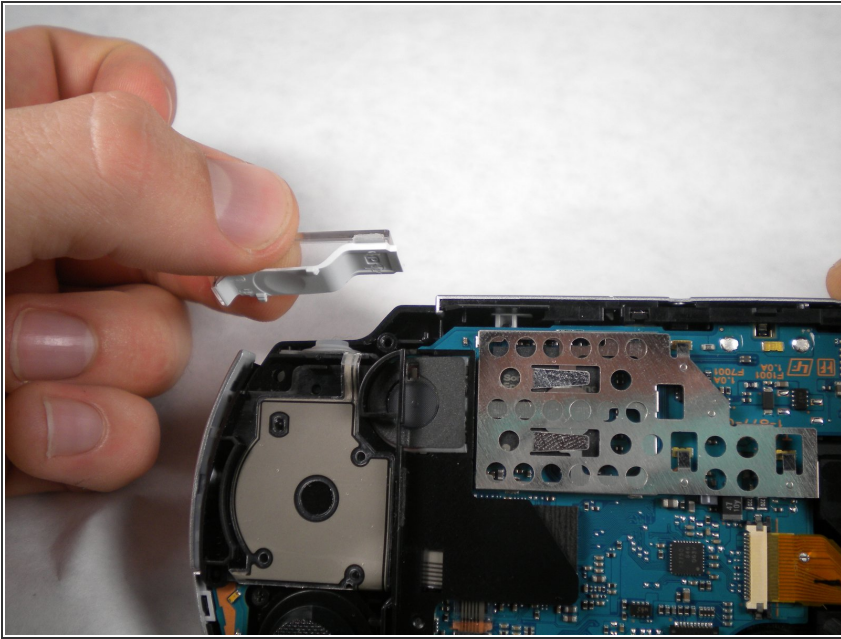
## Step 12



- Remove the white plastic piece that holds the 'L' trigger in place.

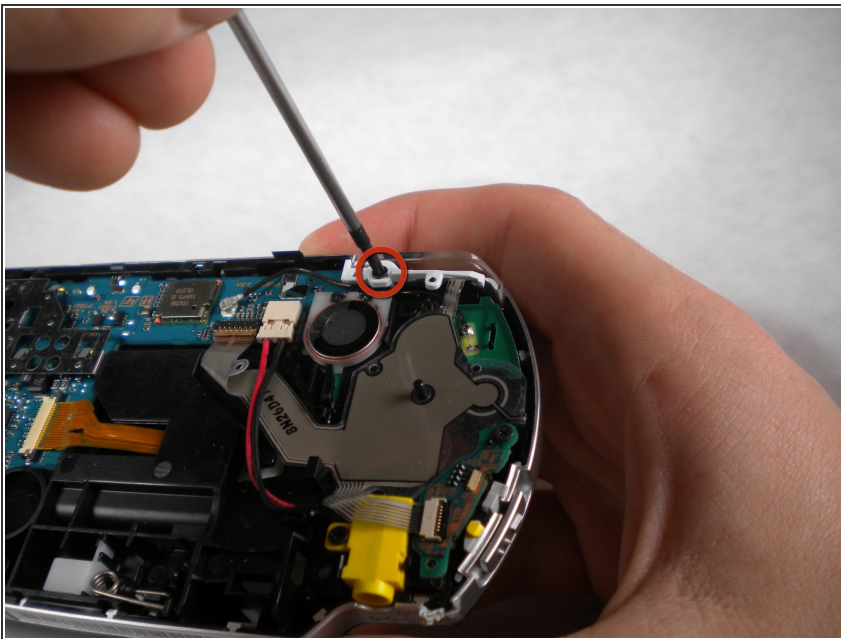


## Step 13



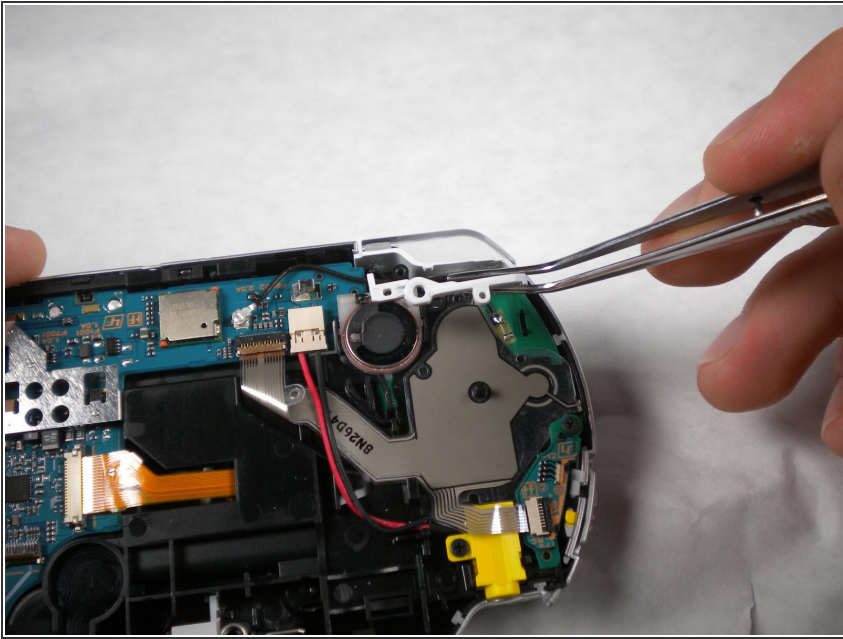
- Remove the 'L' trigger from the PSP.

## Step 14



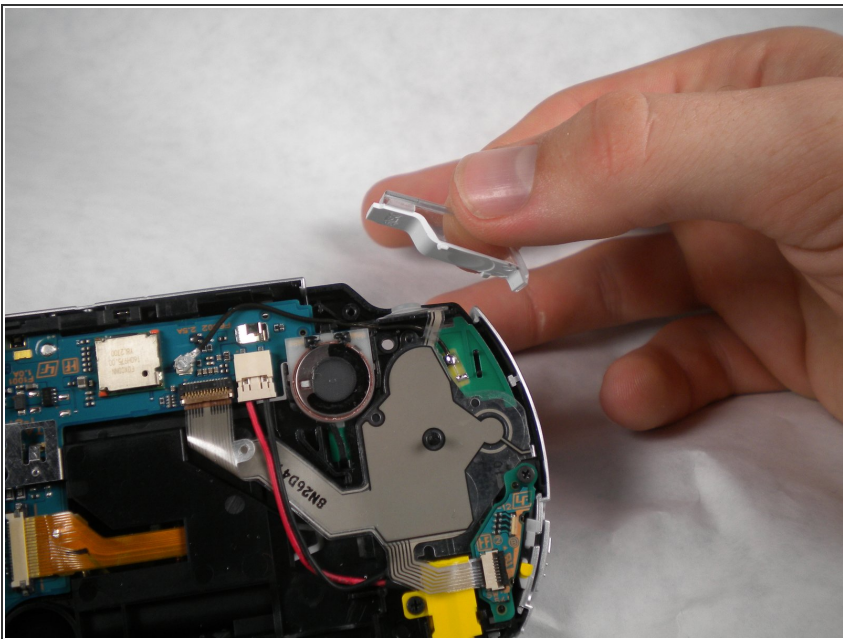
- Remove the screw securing the 'R' trigger.

## Step 15



- Remove the white plastic piece that holds the 'R' trigger in place.

## Step 16



- Remove the 'R' trigger from the PSP.

To reassemble your device, follow these instructions in reverse order.