



LG 25UM58-P Teardown

I broke my LG 25UM58-P LCD panel. Since there...

Written By: Rushil Kisoorn



INTRODUCTION

I broke my LG 25UM58-P LCD panel. Since there weren't any teardowns or disassembly guides online, it was only fitting to do one before it went in the bin.

TOOLS:

- [Metal Spudger](#) (1)
 - [iFixit Opening Picks \(Set of 6\)](#) (1)
 - [Phillips #1 Screwdriver](#) (1)
 - [iFixit Opening Tool](#) (1)
 - [Pry Bar](#) (1)
-

Step 1 — Overview



- i** Top Tip: If you don't leave an HDMI cable attached to your monitor, you can't trip over it, and destroy your display.

Step 2 — Base Removal



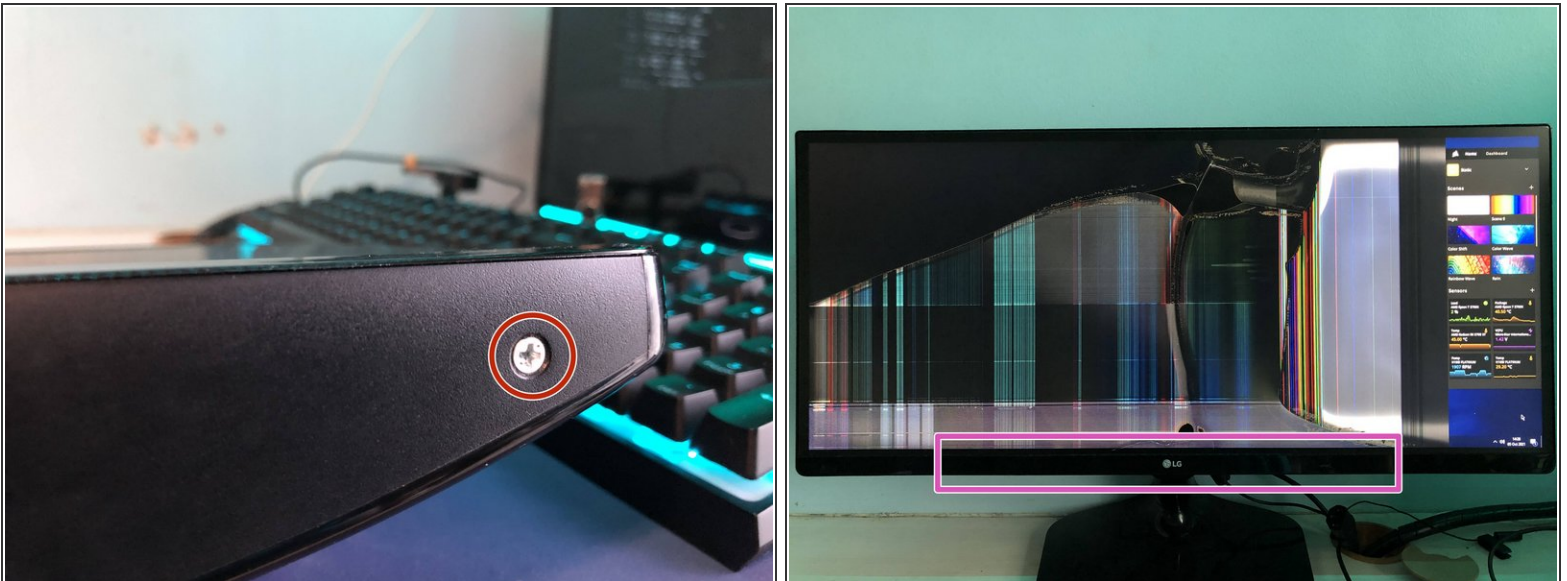
- The base plate can be removed by undoing the screw as seen in the second image.
- Captive D-Ring screw

Step 3 — Stand Removal



- The stand is secured to the monitor frame with 2 Phillips screws.
- The small cover needs to be pushed down to disengage the clip.
- Slide up in order to reveal the screws.
- 2 x Phillips #1 screws

Step 4 — Trim Plate Removal



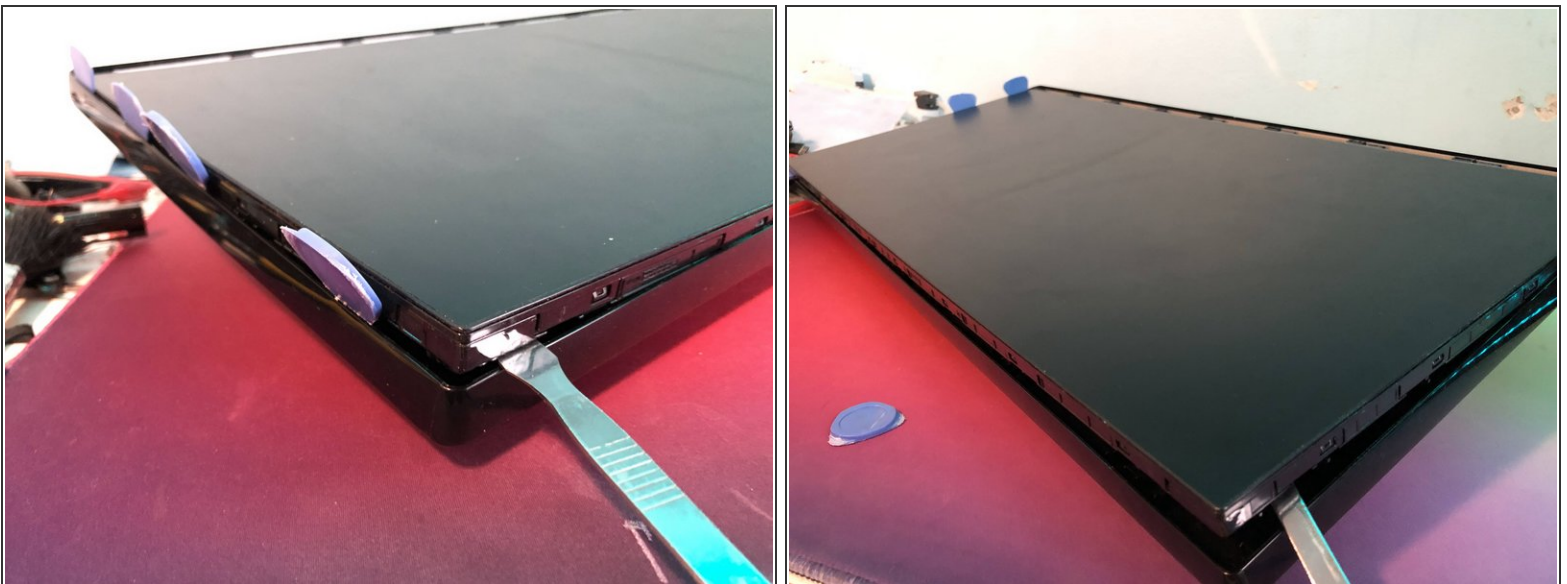
- There are 2 Phillips #2 screws holding the lower trim, with the LG logo, onto the monitor.

Step 5 — Screen Removal



- The lower trim piece lifts off with some persuasion.
- The screen is held on with an overengineered system of clip and tabs. The only method that personally worked, was to pry at the display and lever it out.
- The guitar picks were used to hold the display panel up and prevent it from clipping back in.

Step 6 — More Screen Removal



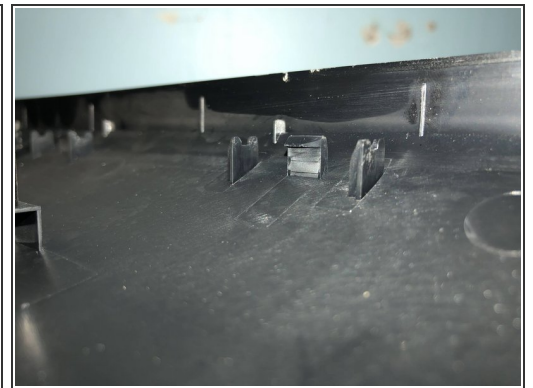
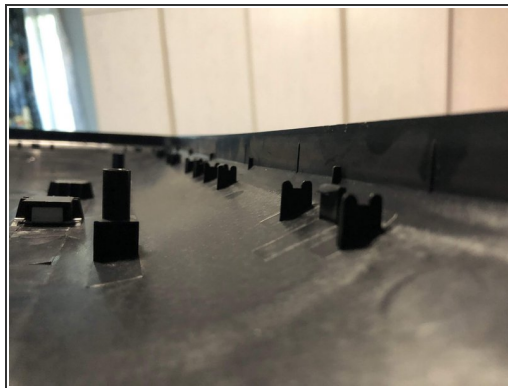
- Once you work your way around the edge of the display, and release all the clips, the panel will be free.

Step 7 — Back Cover Removal



- The rear cover separates from the LCD panel, revealing the surprisingly tiny control board

Step 8 — The Clips from Hell



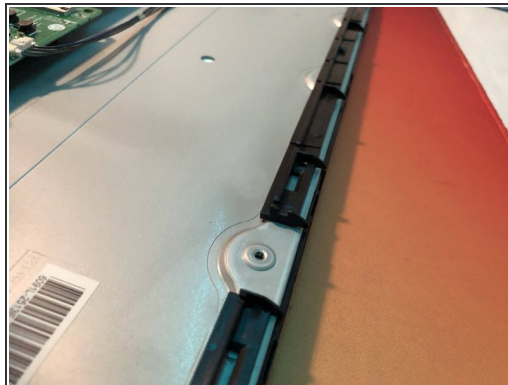
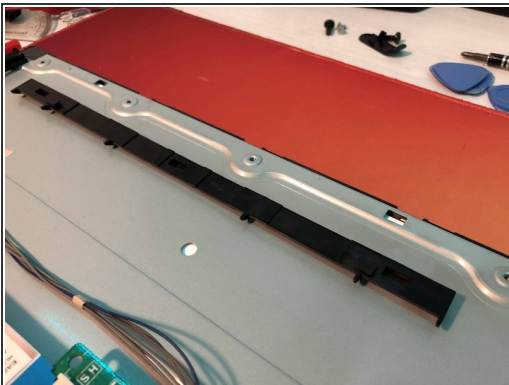
- Some close-ups of the clips and mechanism used to secure the rear cover to the LCD panel

Step 9 — Part Numbers



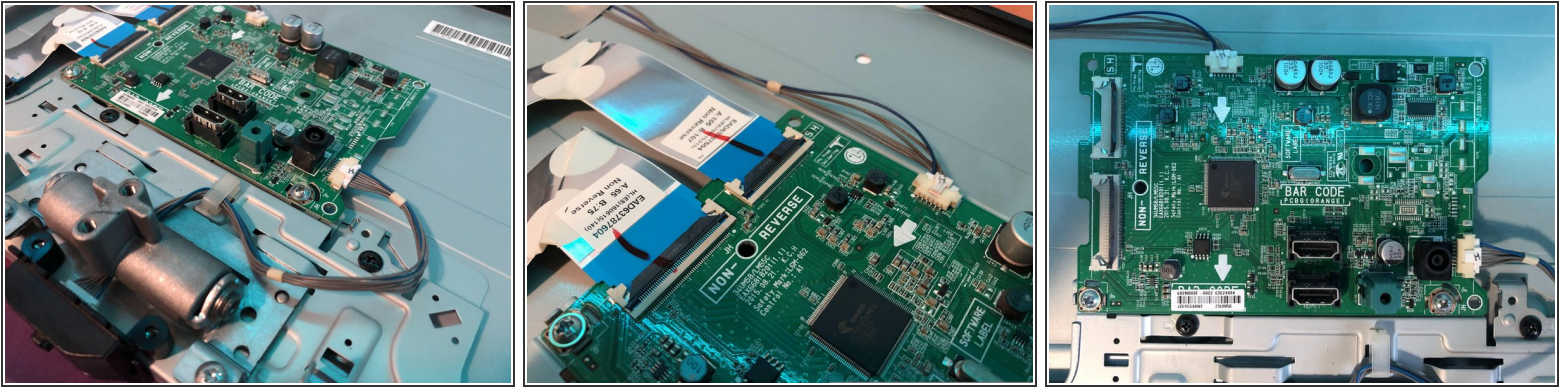
- The panel model appears to be: LM250WW1
- The LCD itself has the part number: BBSU1V 3467C2
- The rear housing is stamped with the part number: MCK67880501

Step 10 — Mounting Mechanism



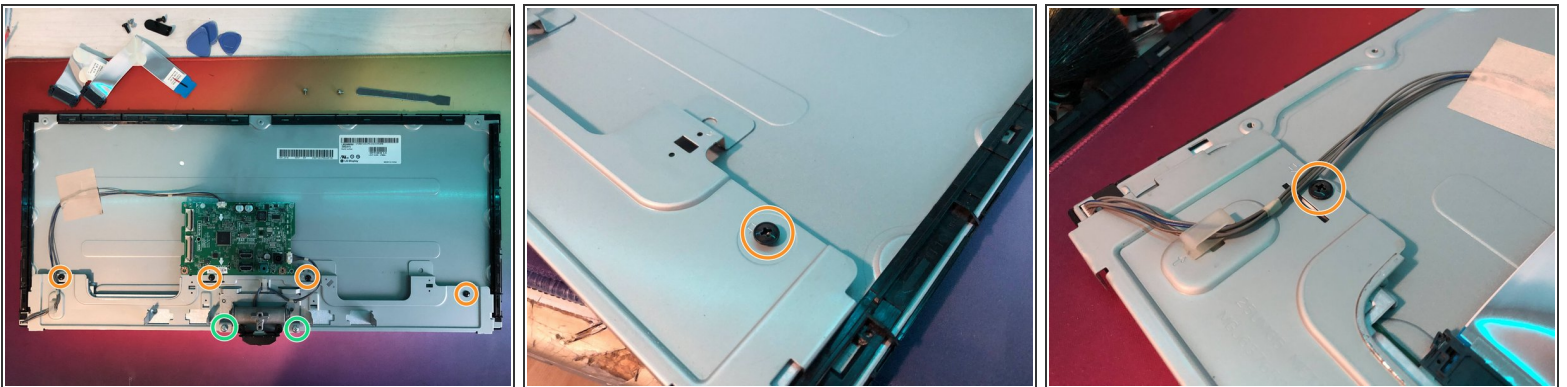
- A closer look at the mounting method shows that there are a series of plastic "rods" that slide into slots on the LCD panel frame. The "rods" then attach to the clips on the rear housing as seen in Step 8.

Step 11 — Motherboard



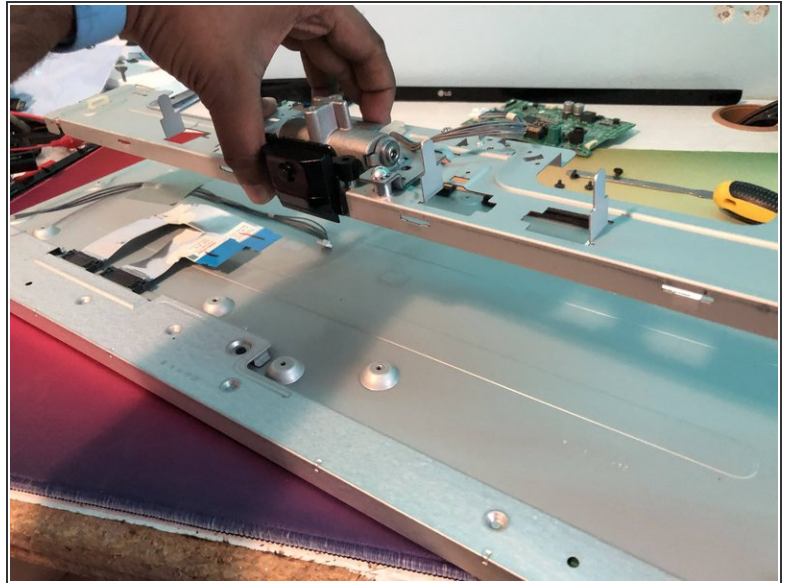
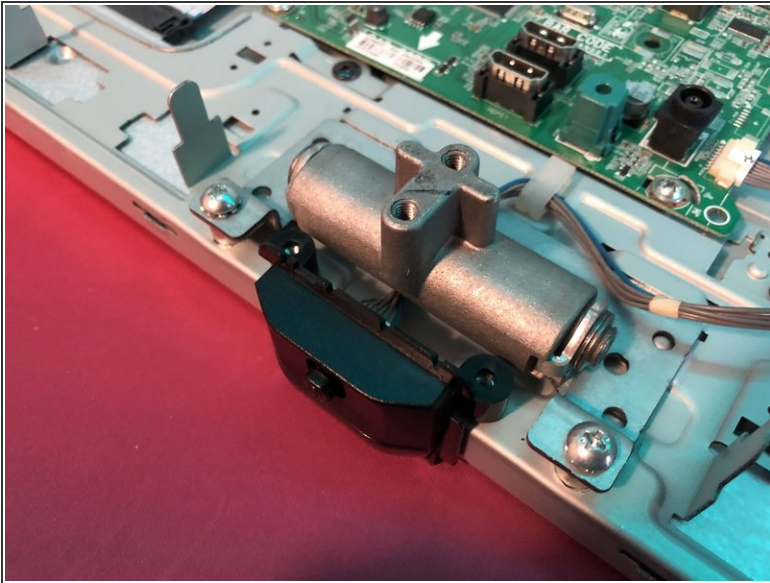
- Judging by the markings on the motherboard, it appears that the same PCB is used for the 34UM58.
- The part number of the board appears to be: 692M000F-002 63624404

Step 12 — LCD Hinge Plate Removal



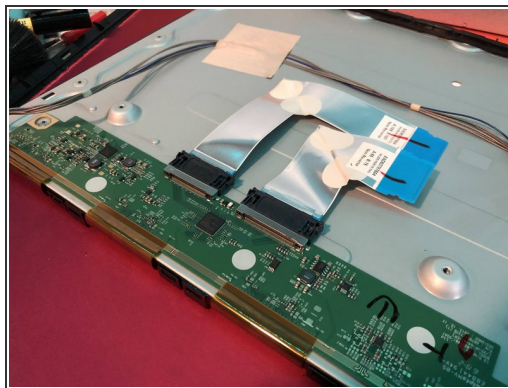
- 4 x #1 Phillips screws are used to secure the hinge plate to the back of the LCD panel.
- 2 x #2 Phillips screws are used to secure the hinge itself to the LCD panel.

Step 13 — Hinge Removal



- Carefully route the cables away, from the hinge panel.
- With the 6 screws removed from the previous step, the hinge assembly can be lifted away.

Step 14 — LCD Panel



- The LCD panel itself can be separated from the backlight.
- Part number: BBSU1V 3467C2

Step 15 — Conclusion



- A fairly tricky monitor to disassemble.
- I'm 90% sure that removal of the LCD panel from the housing/frame will cause it to shatter (if it wasn't already damaged).
- Replacement panels are about the same cost as replacing the entire monitor itself, making repairs unfeasible.