



# AirPort Time Capsule A1470 (Mini!) Teardown

This capsule was disassembled into pieces on June 12, 2013.

Written By: Miroslav Djuric



---

## INTRODUCTION

This mini teardown is more of an addendum to the [AirPort Extreme teardown](#). The Apple Time Capsule is more or less the same thing, save for a hard drive and a couple of extra doodads here and there.

If you're interested in all the nitty-gritty details, check out the Extreme teardown for an extreme look into the device.



### TOOLS:

- [Metal Spudger](#) (1)
  - [Spudger](#) (1)
  - [64 Bit Driver Kit](#) (1)
-

## Step 1 — AirPort Time Capsule A1470 (Mini!) Teardown



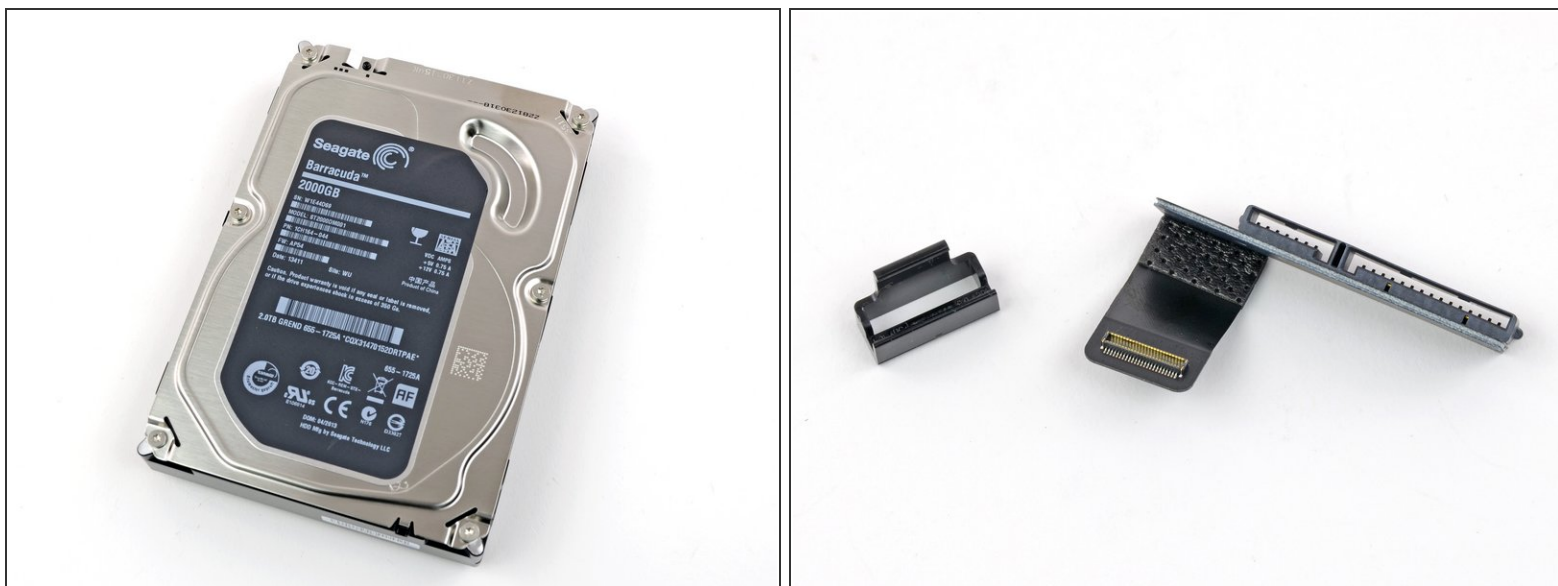
- Today [I](#) went rogue. While the other tech writers were taking apart an as-yet-unnamed device (oh the secrecy!), I took apart the AirPort Time Capsule.
- Going into it, we knew that there wouldn't be many changes from yesterday's AirPort Extreme. Hence the one-man team, and the fairly brief teardown.
- Also, the designers hate it when I hijack their pretty graphics, so I made sure *\*not\** to consult them on the main graphic. Take that, good taste!
- This 2013 Time Capsule has the model number A1470, as evidenced by the "A1470" inscribed on the bottom cover. No funny business over here, we got the real deal.

## Step 2



- Alright, first thing's first: opening this enchilada. The procedure's the same, so I won't [bore you like last time](#).
- Now that that's out of the way, on to the good stuff: as soon as you open the Time Capsule, you notice subtle differences.
- Instead of a metal cover/clamp, now there's a smaller metal cover/clamp that hugs a rubber cover like a... you get the idea. Underneath that rubber cover lies the hard drive.

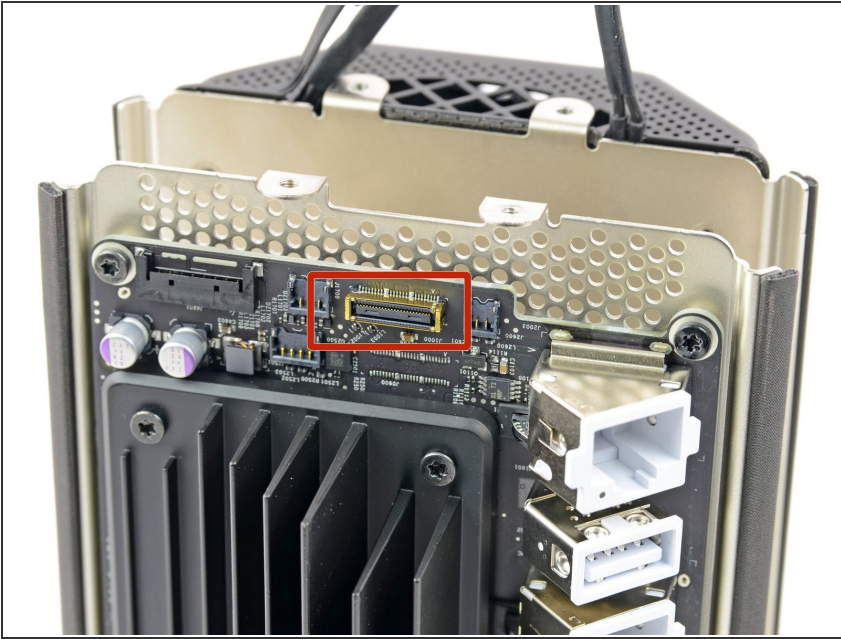
## Step 3



- The drive is a standard, off-the-shelf Seagate Barracuda drive. We're cheapskates (hey, you never know when you might kill a \$3,000 [Retina MBP](#) while trying to open it), so we opted for the 2TB option.
- The standard SATA drive has a not-so-standard, super-thin connector that attaches it to the ~~mothership~~ motherboard.
- The SATA cable's super-thin profile allows the hard drive to be plugged in, as well as allowing it to be clamped securely into the enclosure via the rubber cover (and metal clamp).



## Step 4



- This is where the magic happens. This port is missing from the [AirPort Extreme of yesteryear](#), which allows the Time Capsule to be a Time Capsule, and the AirPort Extreme to be... well... not so extreme.
- Folks asked us if it's feasible to make an Extreme into a Time Capsule. Theoretically, the answer is "Yes," but we're not sure why you'd go through the trouble — the [Seagate Barracuda](#) drive is essentially the price difference between the Time Capsule and the Extreme.
- ⓘ Protip: You might as well pony up the additional dough ahead of time, and save yourself the potential of bricking the device.

## Step 5



- Aside from that, the Time Capsule is pretty much identical to the Extreme. The same power supply, fan, and processing juice.
- Basically nothing new to see here, [move along](#).

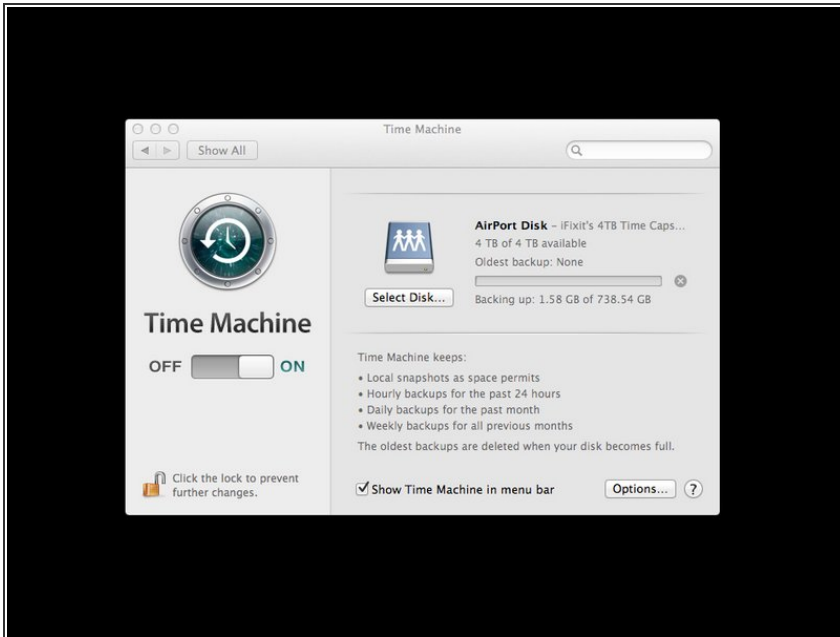
## Step 6



- These are all the different parts that come in a Time Capsule, that you otherwise forfeit with the Extreme. So it's up to you, wise user, to figure out which Wi-Fi droid is right for you.
- AirPort Time Capsule A1470 Repairability Score: **8 out of 10** (10 is easiest to repair).
- This is a no-brainer, since [it's basically the same thing](#) as the AirPort Extreme in terms of repairability.



## Step 7



- Quick update: the Time Capsule will easily accept a [4TB 3.5" hard drive](#) in place of its *lowly* 2TB original drive. The Seagate was used to take this screenshot, but the HGST drive should work fine as well.