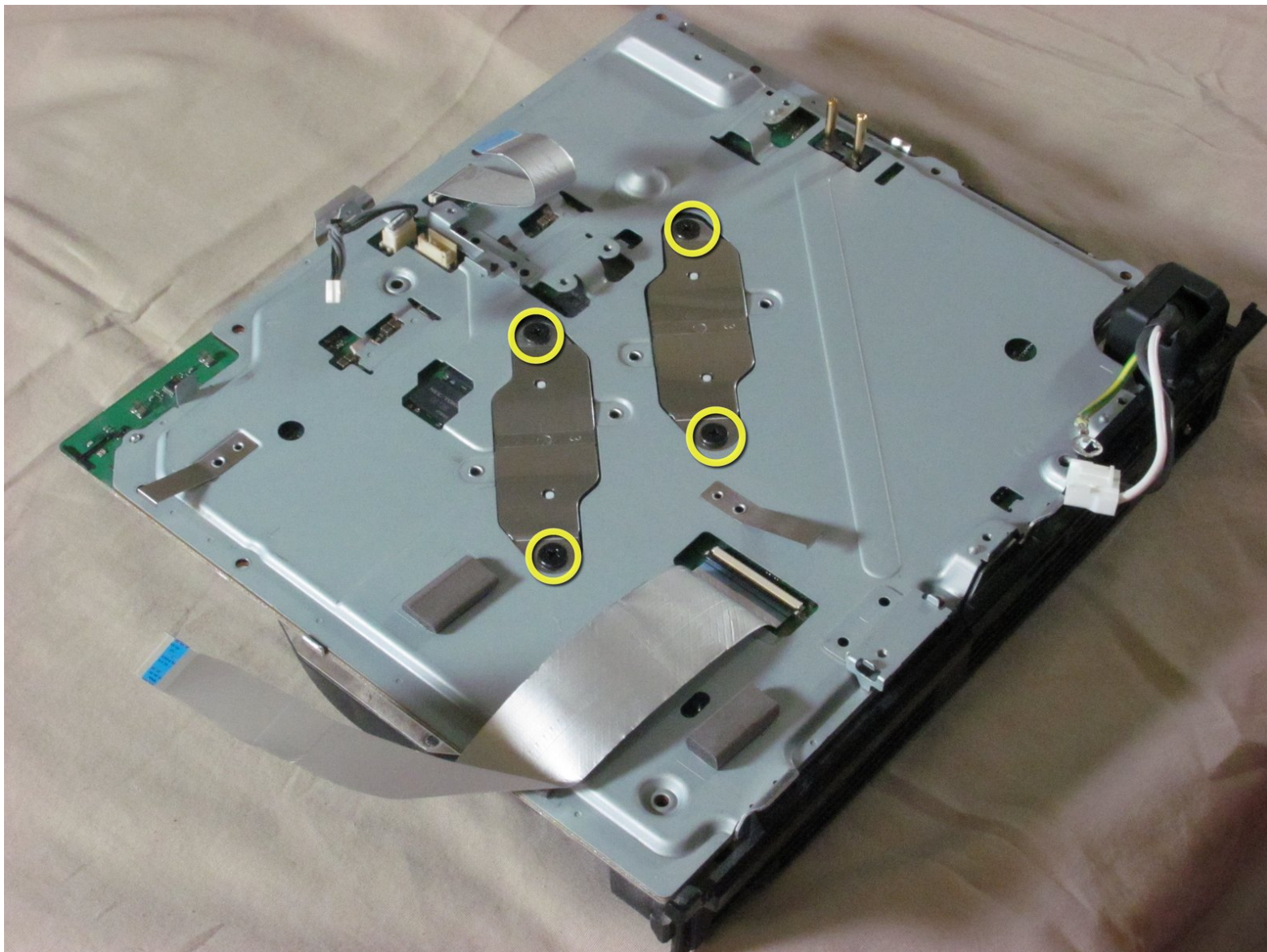




Playstation 3 Motherboard Replacement

Written By: iDeleted



INTRODUCTION

This guide provides the steps to separate the Playstation 3 motherboard from its metal enclosure. This allows the motherboard to be replaced if necessary.

TOOLS:

- [Phillips #2 Screwdriver](#) (1)
 - [Spudger](#) (1)
 - [T10 Torx Screwdriver](#) (1)
-

Step 1 — Top Cover



- Remove the rubber screw cover near the hard drive cover with a spudger.

Step 2



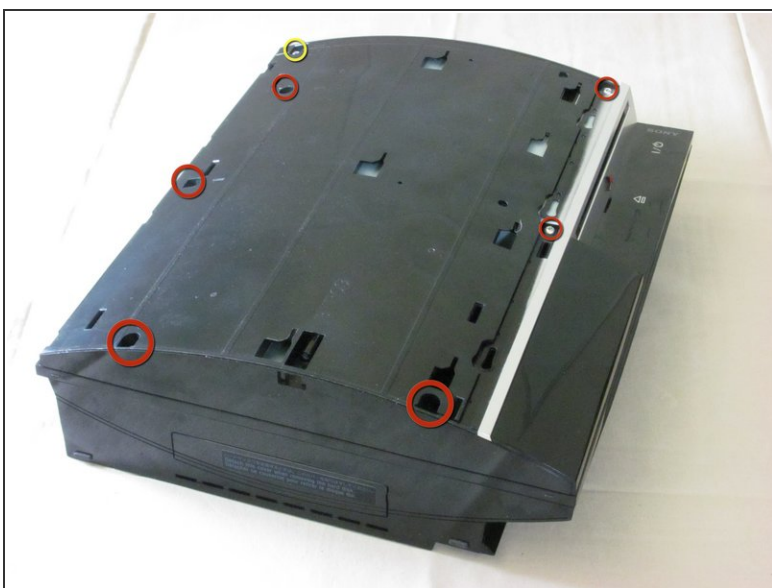
- Remove the screw holding the top cover in place with a Torx T10 screwdriver.

Step 3



- Slide the top cover down about half an inch.
- Lift the cover off of the PS3.

Step 4



- Remove the seven screws in the top cover with a Phillips #2 screwdriver.
- ❗ One of the screws is shorter than the others. The short screw is marked in yellow.

Step 5



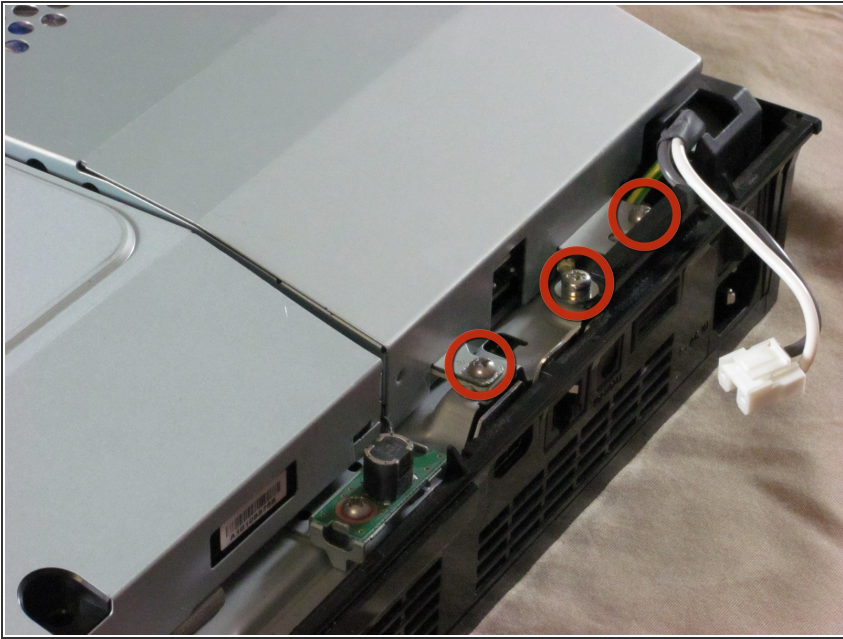
- You can now lift off the top cover.

Step 6 — Power Supply



- Unplug the white wires connected to the wireless board. There are two sets of wires: one set in the front, one in the back.
- ✦ Push down the tab on the connector to disconnect the wires.
- Remove the two screws on the front of the power supply.

Step 7



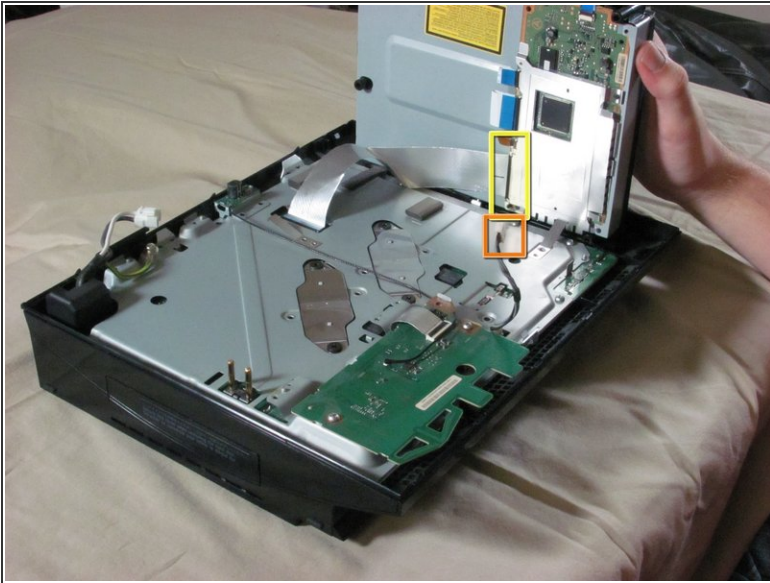
- Remove the screws on the back of the power supply with a Phillips #2 screwdriver.

Step 8



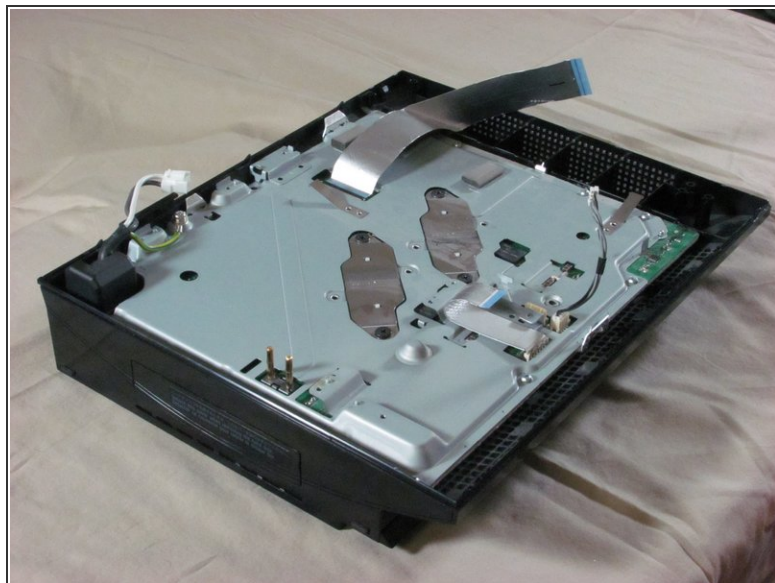
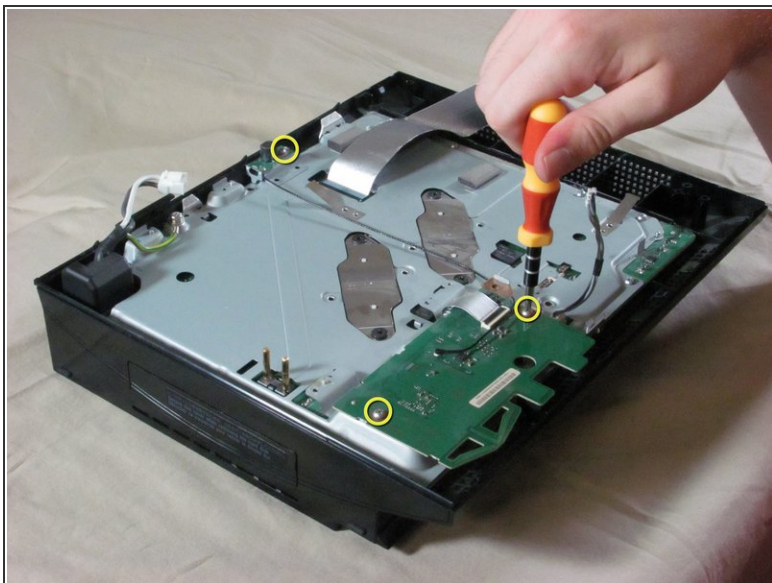
- Remove the power supply by lifting it straight up.

Step 9 — Motherboard Enclosure



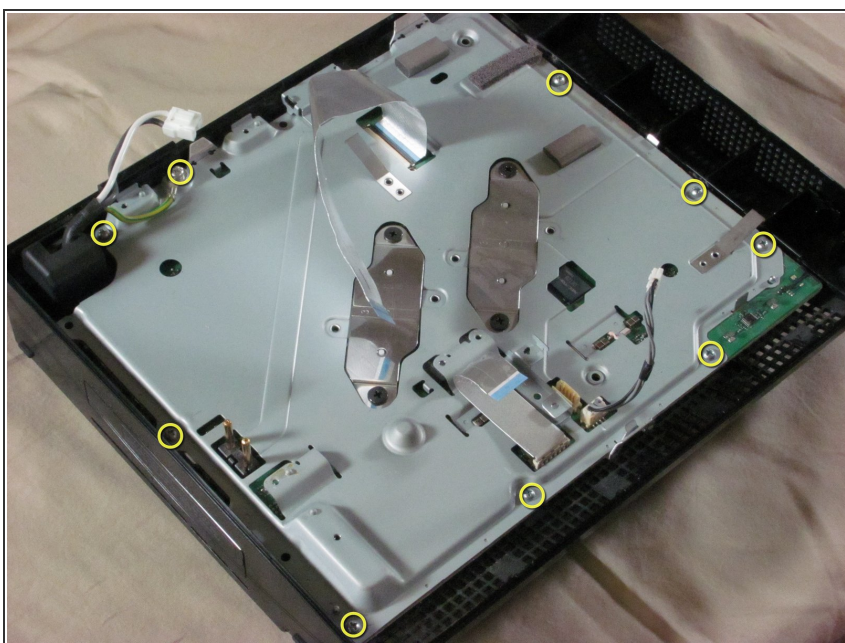
- Unplug the optical drive power cable.
- Detach the ribbon cable that connects the optical drive to the motherboard.
- Set the optical drive aside.

Step 10



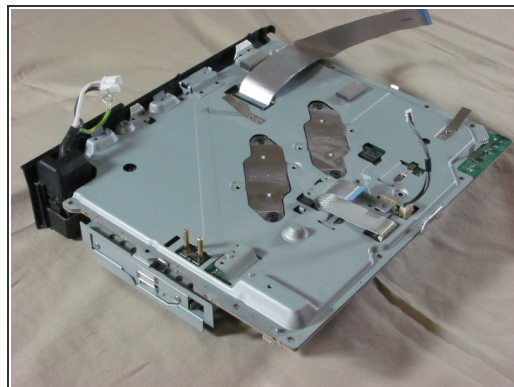
- Remove three screws (Phillips #2) from the wireless board and antenna.
- Detach the ribbon cable that connects the wireless board to the motherboard.

Step 11



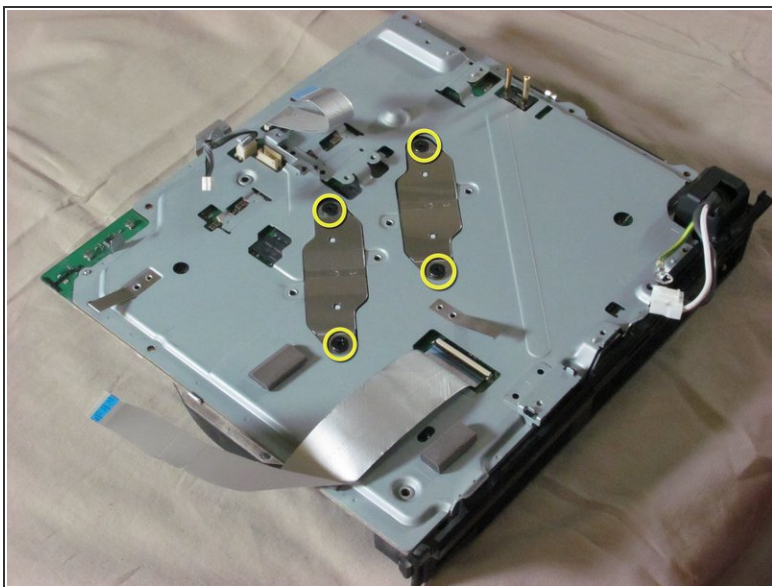
- Remove nine screws (Phillips #2) from the perimeter of the metal plate covering the motherboard.

Step 12



- Remove the hard drive door with a spudger.
- Lift the metal enclosure out of the plastic bottom case.

Step 13 — Motherboard



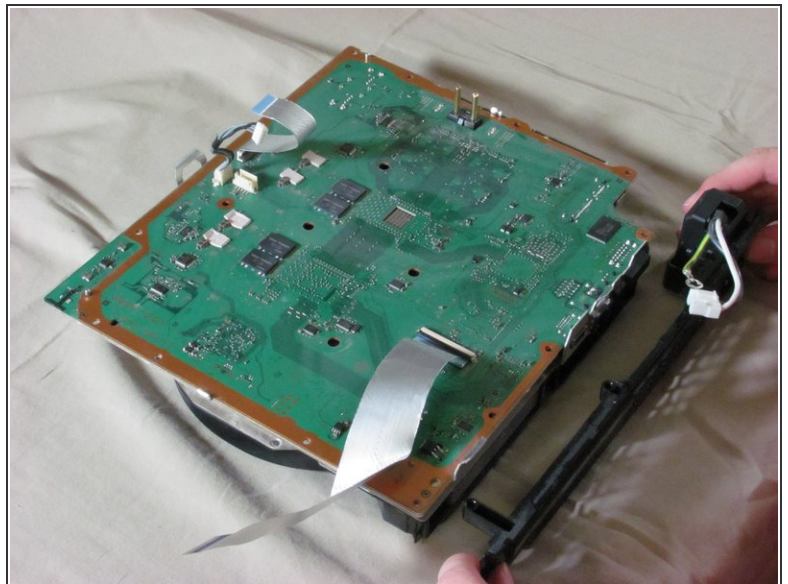
- Remove four black screws (Phillips #2) from the top plate of the motherboard enclosure.
- The two, small plates held down by the screws should become loose. Remove these plates.
- Remove these plates.

Step 14



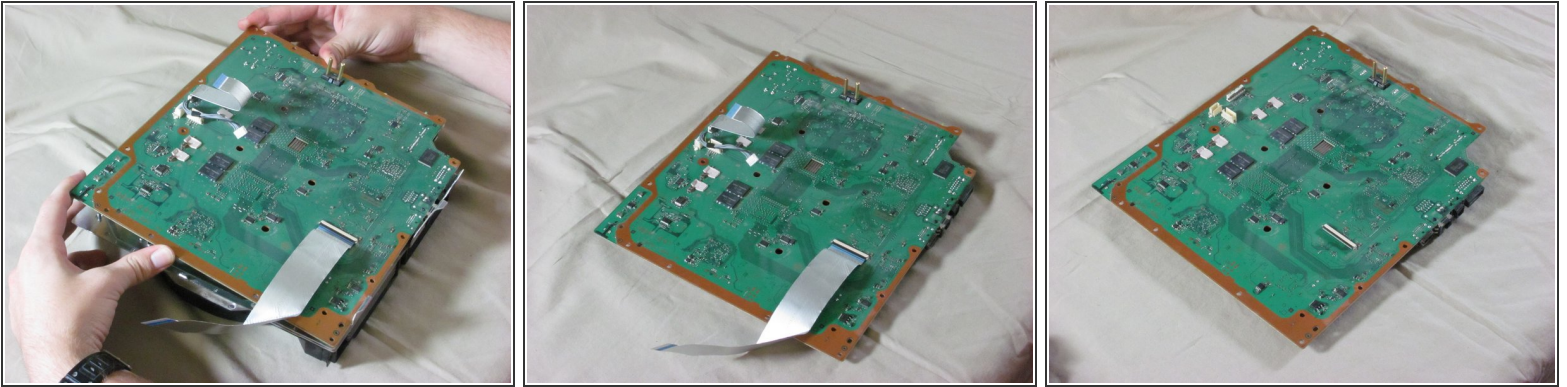
- Remove the large, top plate by tilting it back until it comes off.

Step 15



- Slide the back panel out of the enclosure.

Step 16



- Lift the motherboard to separate it from the rest of the enclosure.
 - ❗ There are two blocks on the bottom of the motherboard that stick to the metal plate with thermal paste. When reattaching the motherboard to its enclosure, make sure to put thermal paste on those blocks.
- Detach the two ribbon cables from the motherboard.

To reassemble your device, follow these instructions in reverse order.