



---

## INTRODUCTION

Make sure to power off the pc.

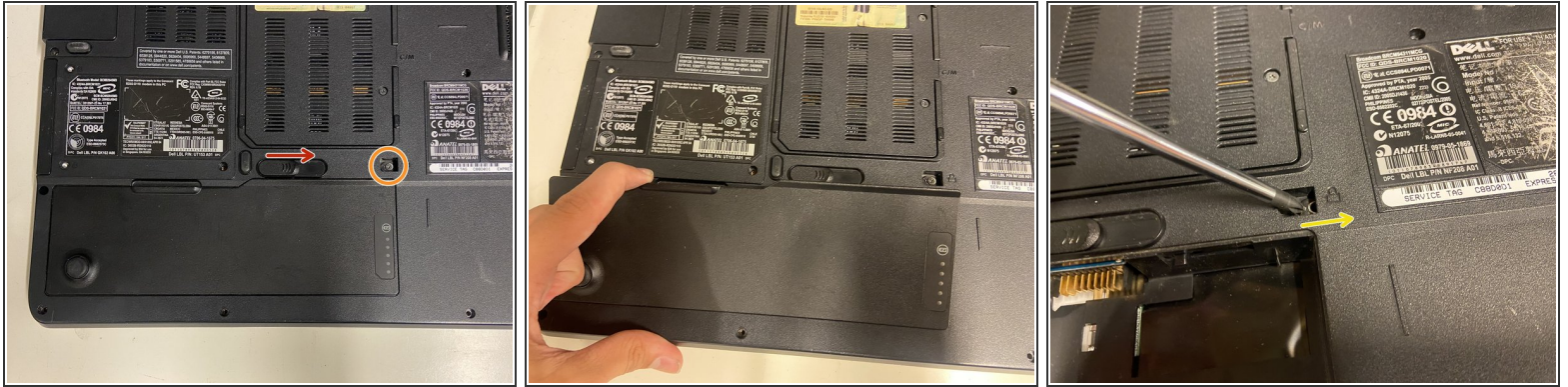


### TOOLS:

- [Phillips #1 Screwdriver](#) (1)
  - [Flathead 3/32" or 2.5 mm Screwdriver](#) (1)
-

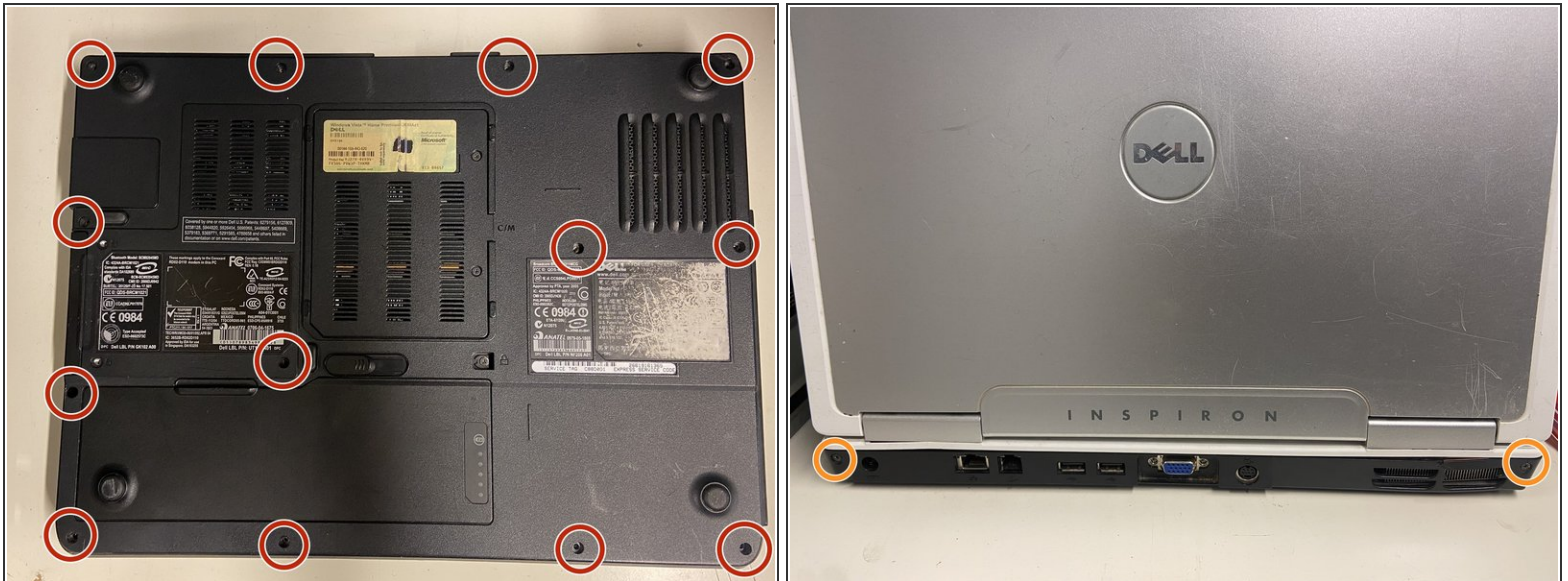


## Step 1 — Battery and Optical drive



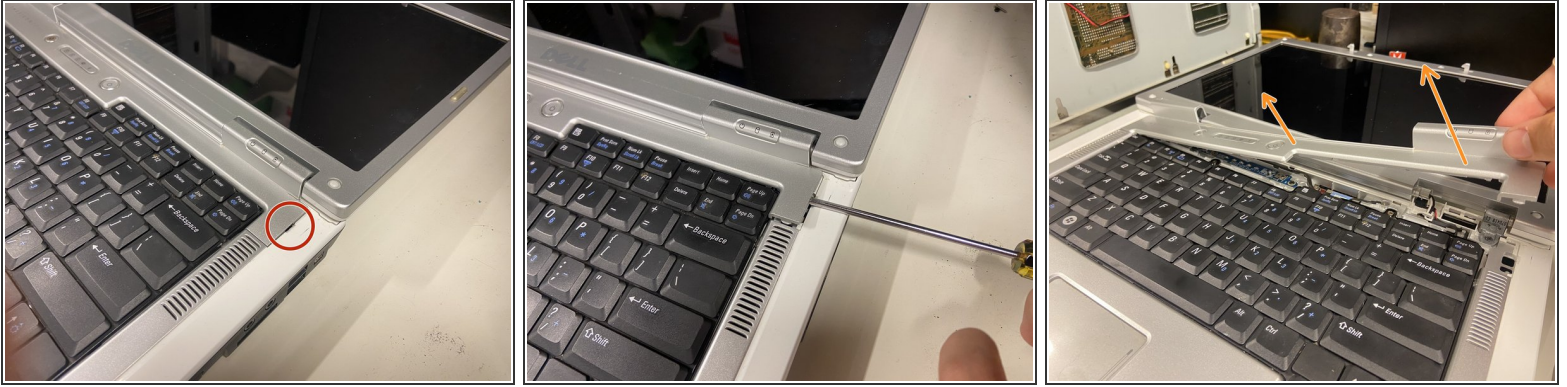
- Slide the battery disconnect right.
- Remove the screw for the optical drive.
- Use a screwdriver to push the optical drive out of the base.
- Gently pull the drive out when it sticks out far enough.

## Step 2 — Base Screws



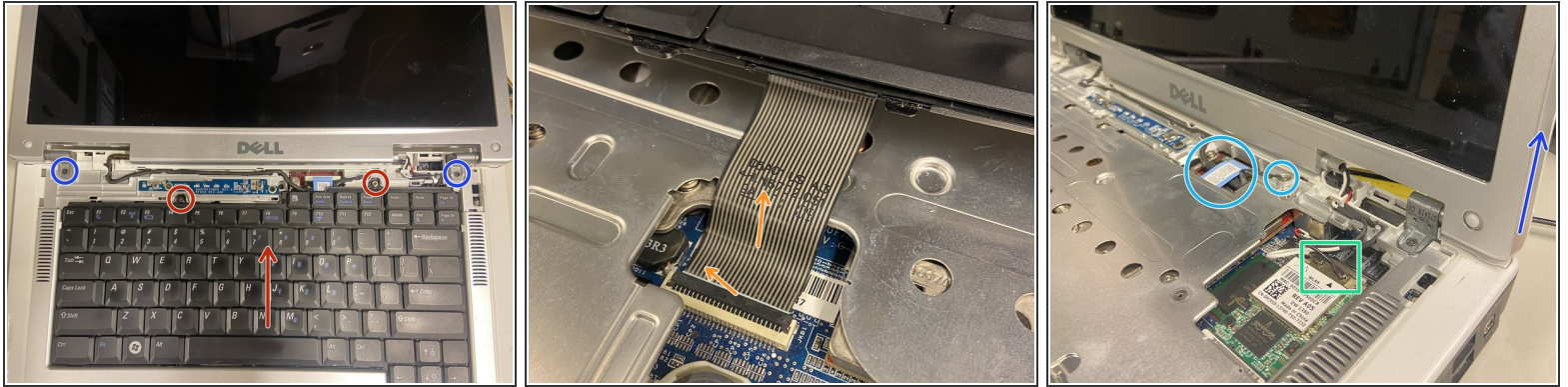
- Unscrew all 12 screws on the base of the laptop
- Remove the 2 screws at the back of the laptop.

### Step 3 — Power Button panel.



- Rotate the screen to a 180-degree position.
- Take a flat head screwdriver and gently pry at the indentation. It should come open semi-easily.
- Grab the panel and gently pull it off

## Step 4 — Keyboard and display



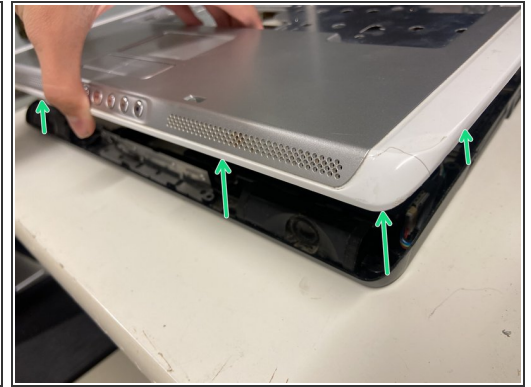
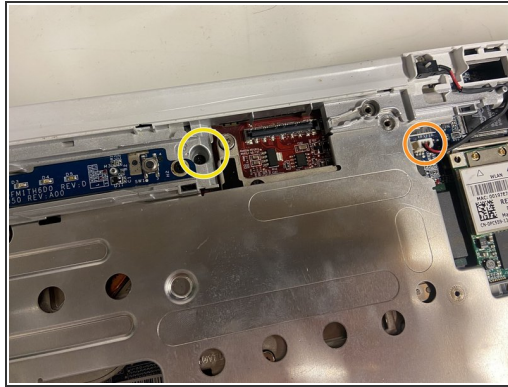
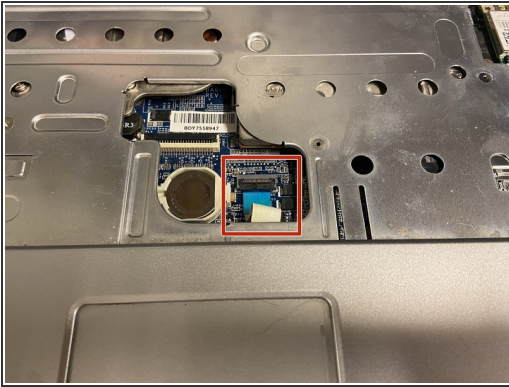
- Remove the two screws and slide the keyboard toward the display.

⚠ There is a delicate ribbon cable attached to the bottom of the keyboard. Be careful when removing it.

- Rotate the latch up toward the trackpad, then carefully remove the ribbon cable.
- Remove the antenna connectors on the wifi card by pulling up at the part where the cable meets the connector.
- Unscrew the grounding cable on the display cable. Disconnect the display cable by pulling up on the tab.
- Remove the last two screws holding the display in. Rotate the display to an upright 90-degree position. Gently pull up to remove the display.

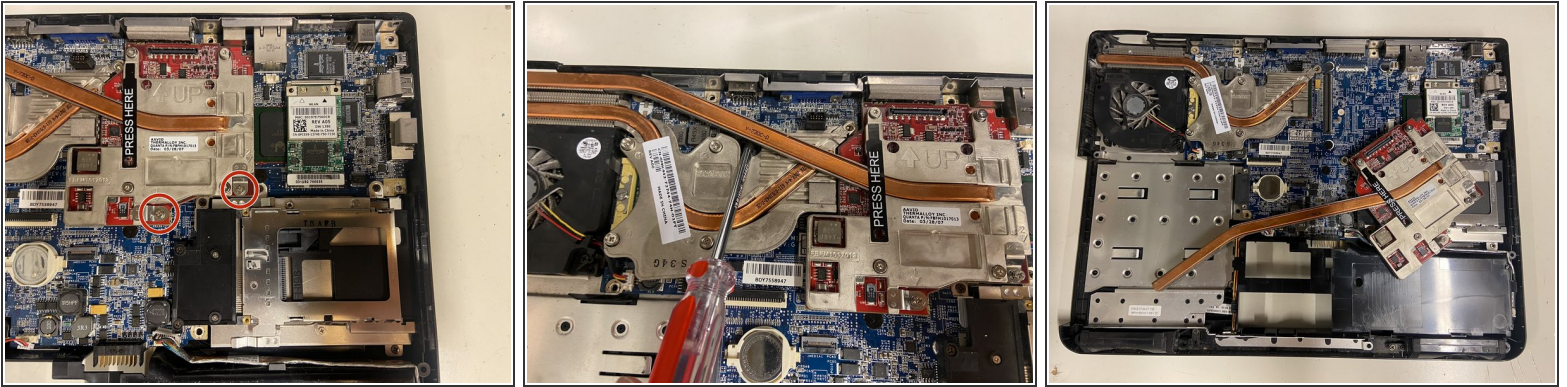


## Step 5 — Top Panel



- Disconnect the ribbon cable from the motherboard
  - Disconnect the lid sensor.
  - Unscrew the last screw holding the top panel in.
  - Lift the panel.
- ⓘ There may be clips in the back, slide your finger to pry them off.
- ⚠ If you can't lift the panel, check if there are any screws on the base holding it.

## Step 6 — GPU



- Remove the two screws shown.
- Use a screwdriver to pry the GPU and cooler up.
  - ⓘ Use a screwdriver with a larger diameter shank to disconnect the gpu.
- To reconnect the gpu, align it and firmly press at the "Press here" label.

To reassemble your device, follow these instructions in reverse order.