



How to Test Your Samsung Device After a Repair

Use this guide to perform diagnostic tests for...

Written By: Alex Diaz-Kokaisl

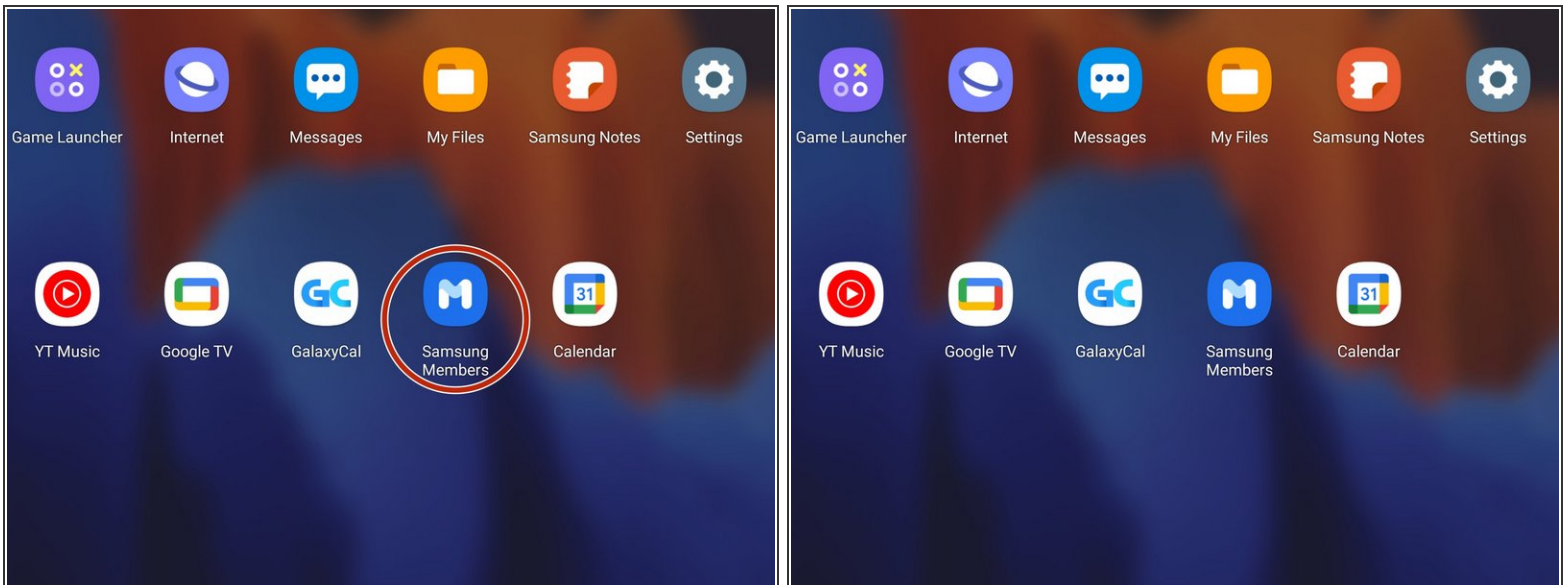


INTRODUCTION

Use this guide to perform diagnostic tests for your Samsung device after a repair.

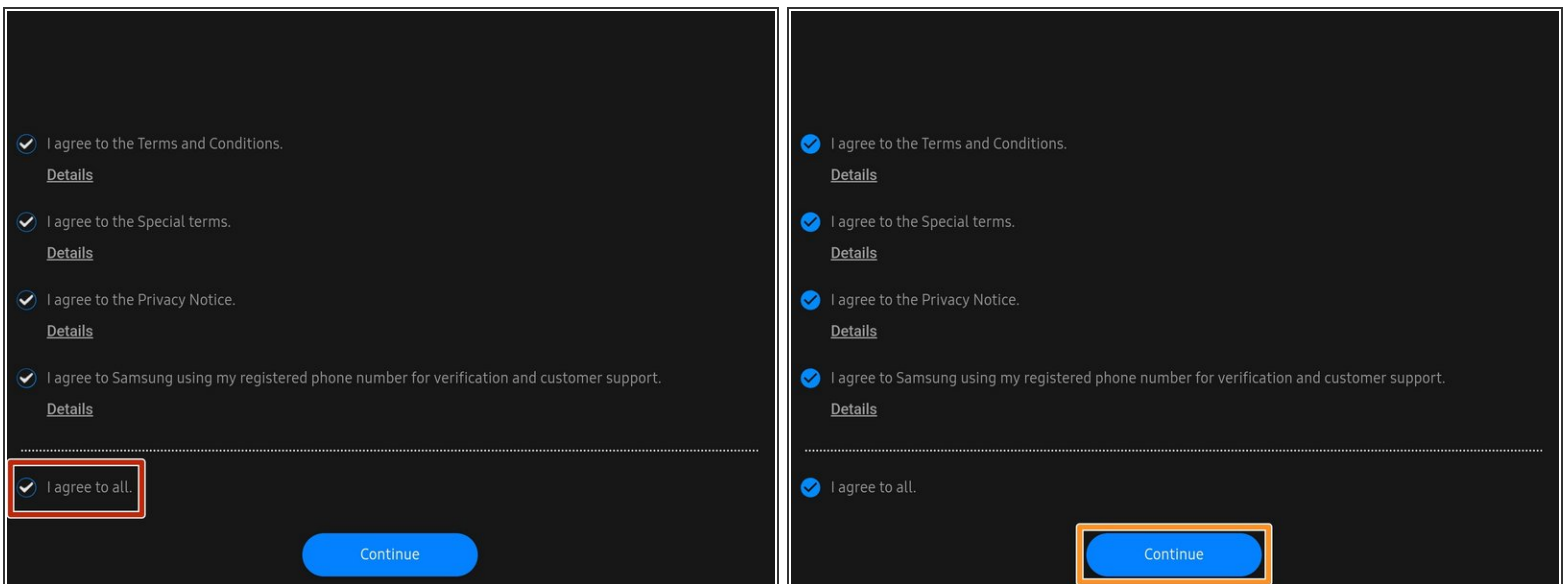
Note: The images shown were taken on a Galaxy Tab S7+ 5G. The amount of tests will vary depending on your device's features.

Step 1 — Download the app



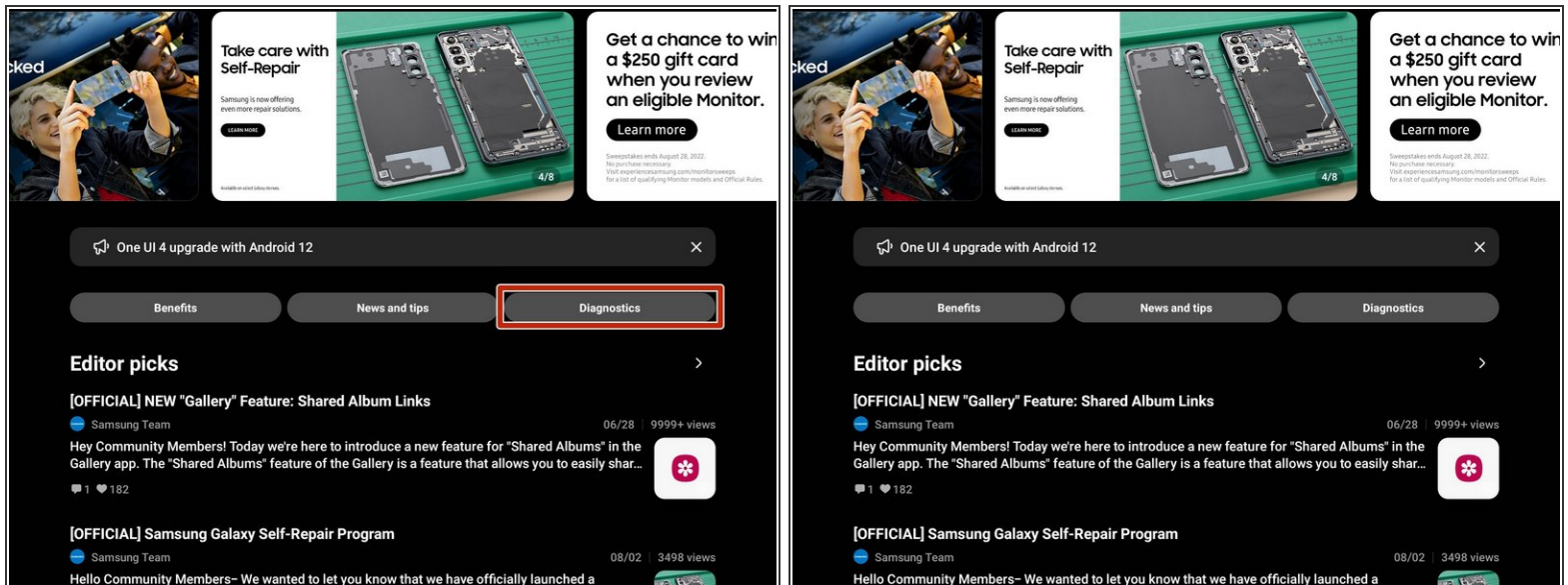
- Download the Samsung Members app on the Play Store or the Galaxy Store
- Select the Samsung Members app.

Step 2 — Agree to the terms and conditions



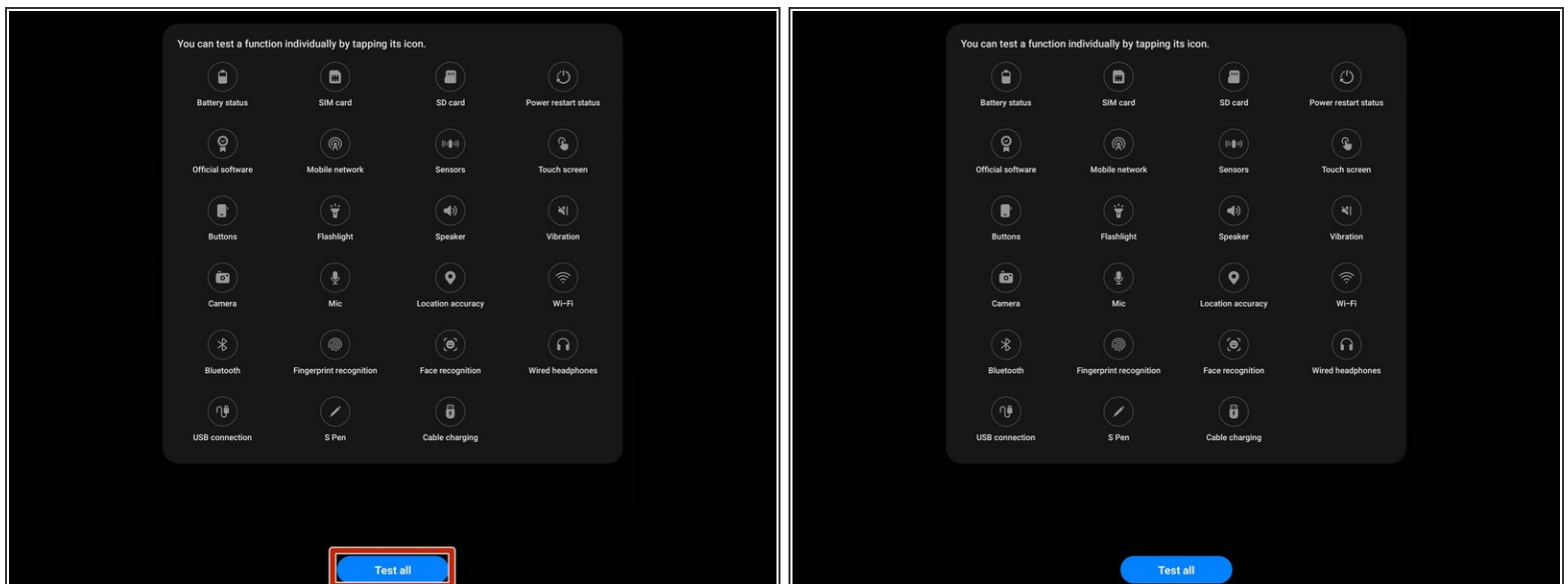
- Select "**Agree to all**" to fill in the agreement checkmarks.
- Select "**Continue**"


Step 3 — Navigate to the test screen



- Select the "**Diagnostics**" tab near the top right of the screen.

Step 4 — Select the test



 Depending on your device, you may have different tests available.

- Select the test you would like to perform.
- If you want to perform all of the tests, select "**Test all**"

