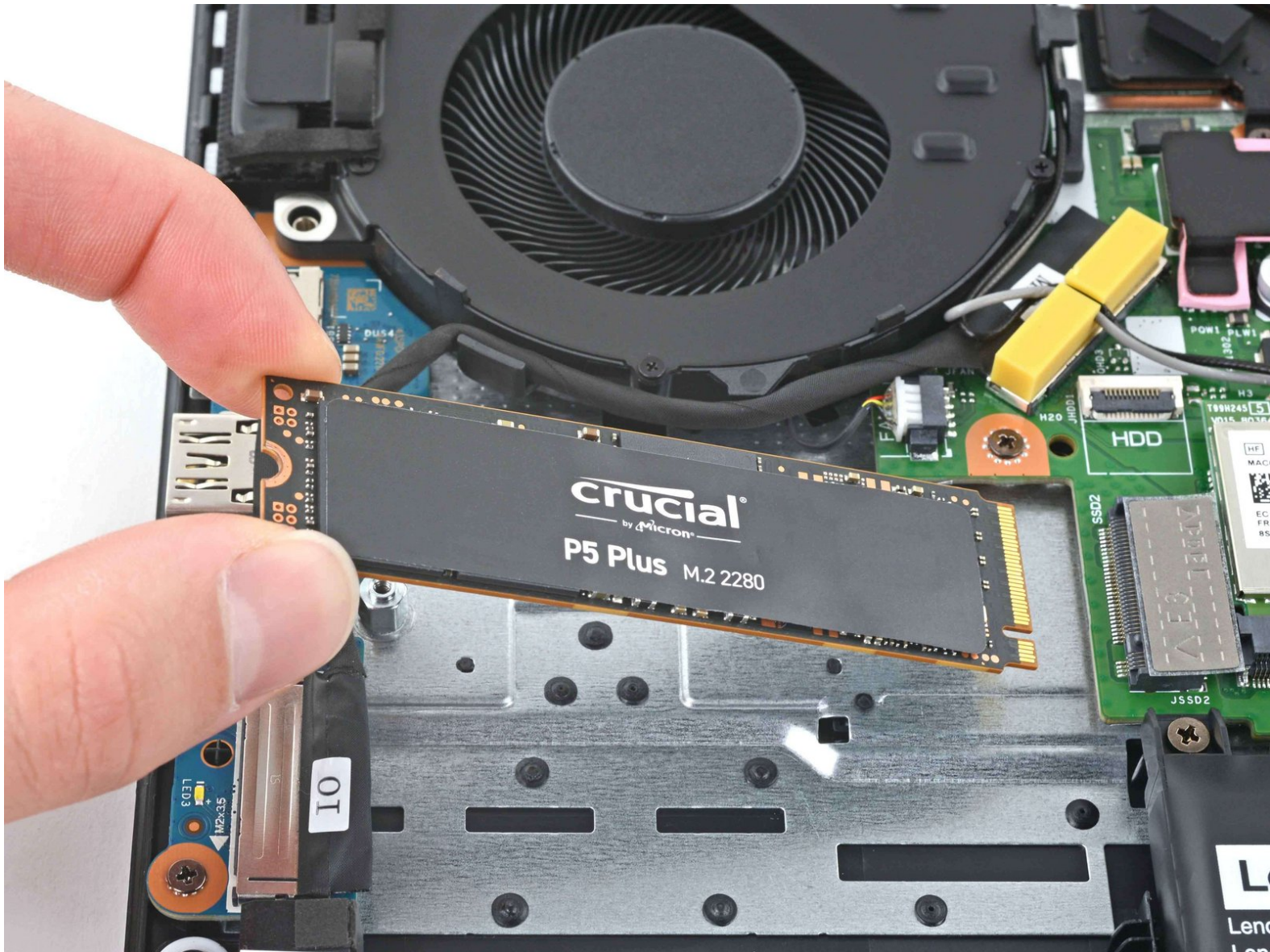




How to Install an M.2 SSD

Follow this general guide to learn how to...

Written By: Chayton Ritter



INTRODUCTION

Follow this general guide to learn how to install an M.2 SSD in your laptop.

Before you work on your laptop, be sure to **completely power off and unplug** it. Make sure the laptop is not in standby, sleep, or hibernation mode.



TOOLS:

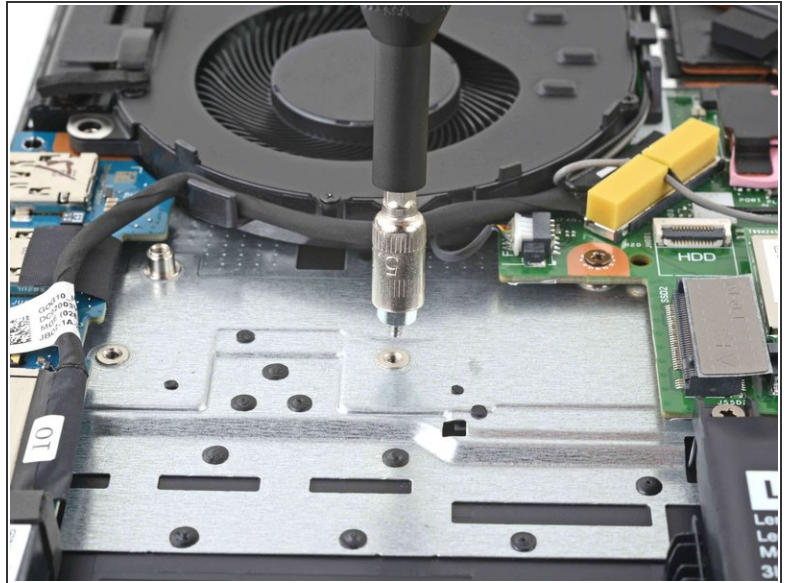
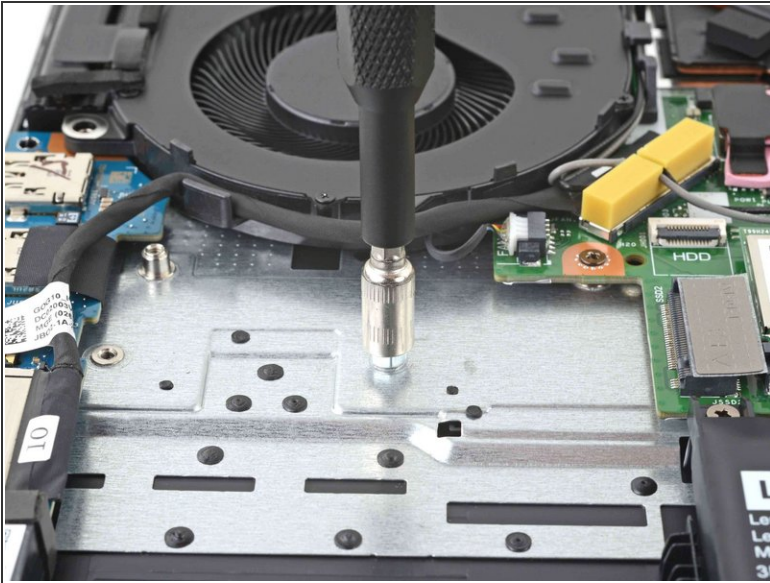
- [iFixit Precision Bit Driver](#) (1)
- [Tweezers](#) (1)



PARTS:

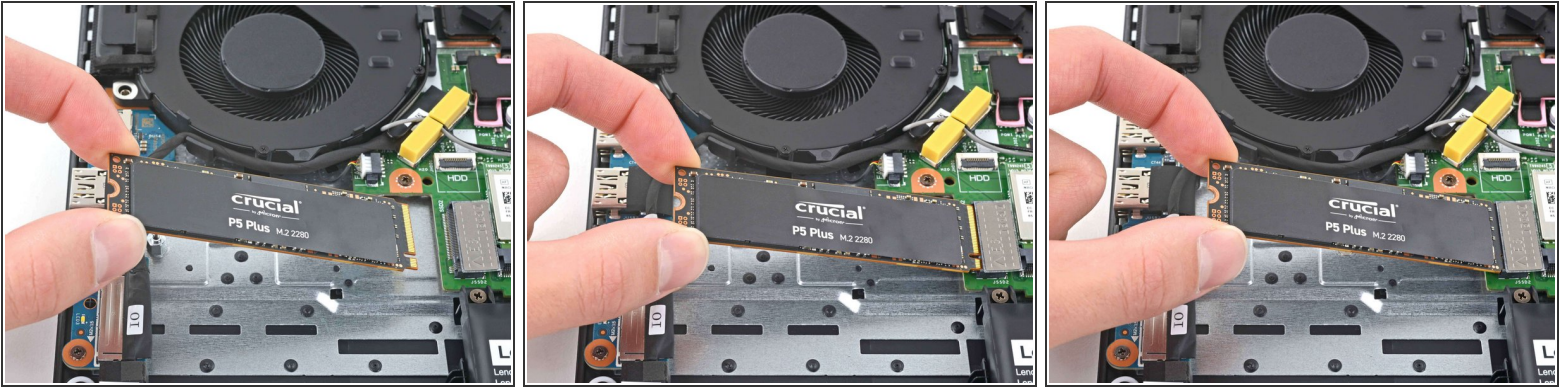
- [Crucial P3 NVMe PCIe M.2 2280SS SSD](#) - solid performance, switching from HDD or SATA to NVMe™ (1)
- [Crucial P3 Plus NVMe PCIe M.2 2280SS SSD](#) - fast Gen4 NVMe™ storage for data-intensive applications (1)
- [Crucial P5 Plus NVMe PCIe M.2 2280SS SSD](#) - professionals, creatives, and hardcore gamers (1)

Step 1 — Reposition the standoff



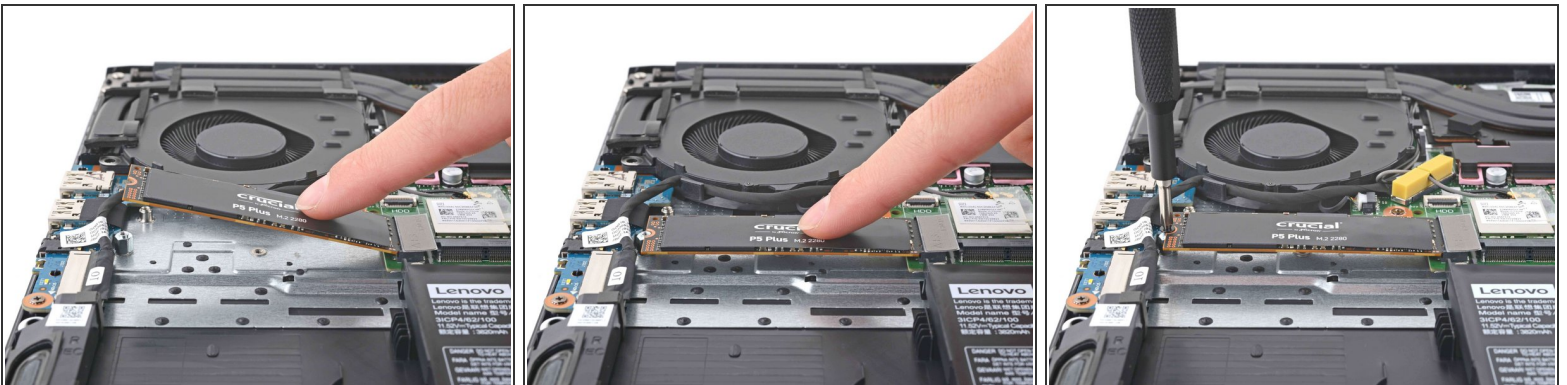
- ❗ If your laptop did not include a removable standoff or only supports one M.2 SSD form factor, you can skip this step.
- Use a screwdriver to remove the preinstalled standoff.
- ❗ If your laptop does not include a preinstalled standoff, you will need to get one.
- Find the correct standoff location that corresponds to your desired M.2 SSD form factor.
- Screw in the standoff.

Step 2 — Insert the SSD



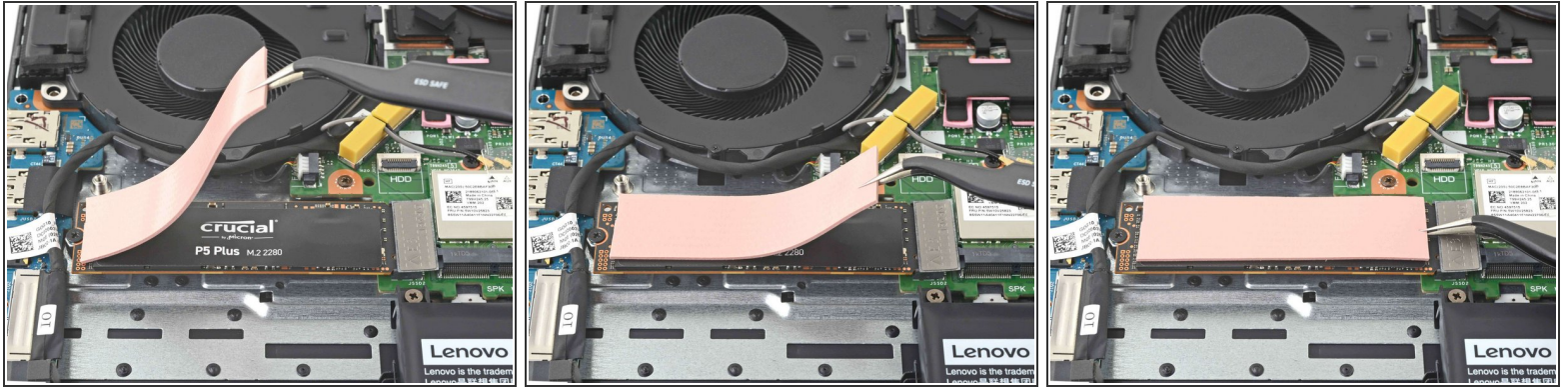
- Grip the SSD on the sides near the screw indent.
- Gently slide the SSD into the socket at about a 30° angle.
- ❗ The socket is spring loaded and will support the SSD at an angle.

Step 3 — Screw down the SSD



- Use your finger to hold the SSD down horizontally, making sure that the screw indent aligns with the standoff.
- Screw down the SSD to secure it.

Step 4 — Apply a thermal pad



- ❗ If your laptop did not have a thermal pad installed, you can skip this step.
- Use tweezers or your fingers to place a thermal pad on the top of the SSD.
- ❗ The original thermal pad can be reused if it is clean and undamaged.

Installation didn't go as planned? [Try some basic troubleshooting](#), or ask our [Answers community](#) for help.